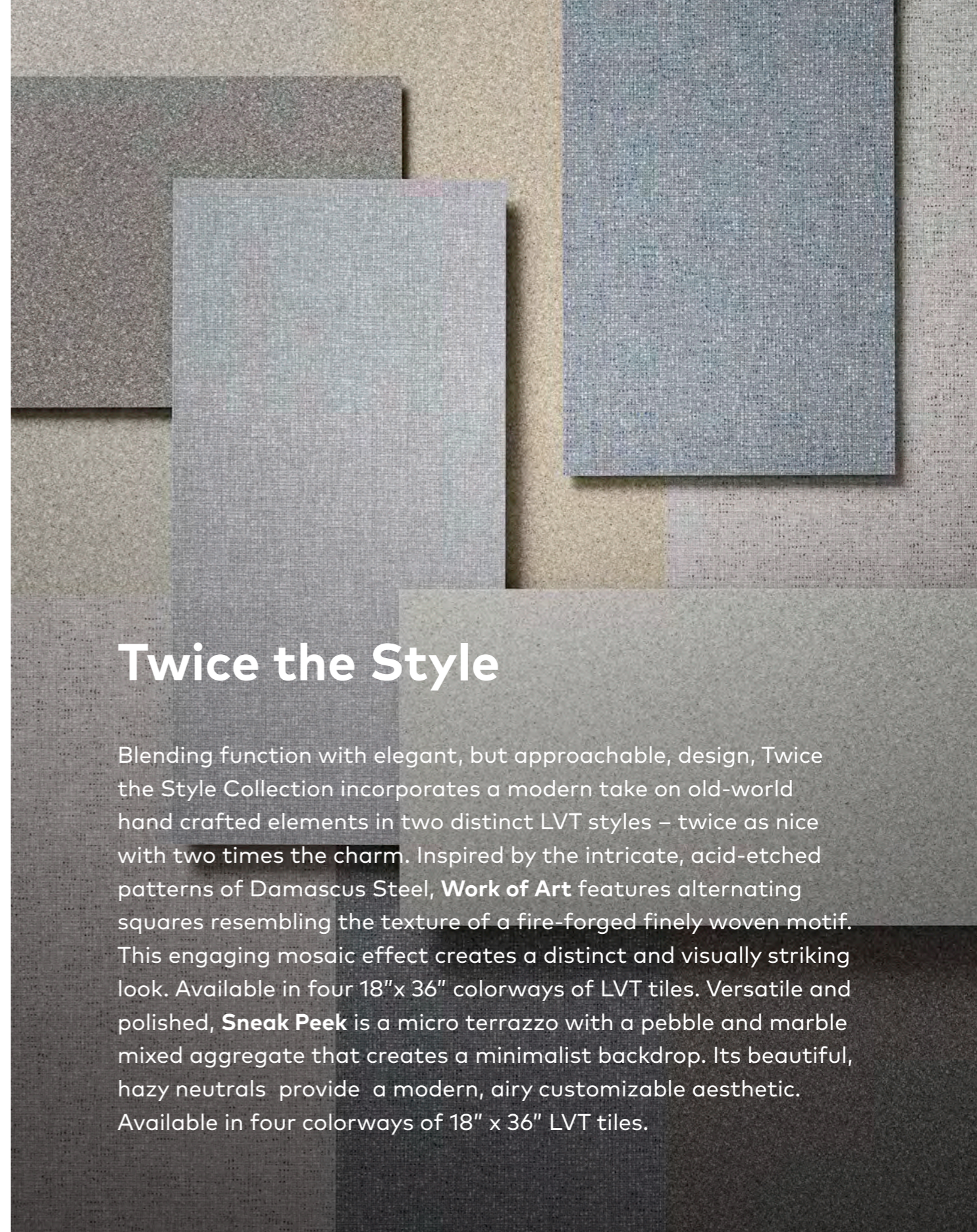
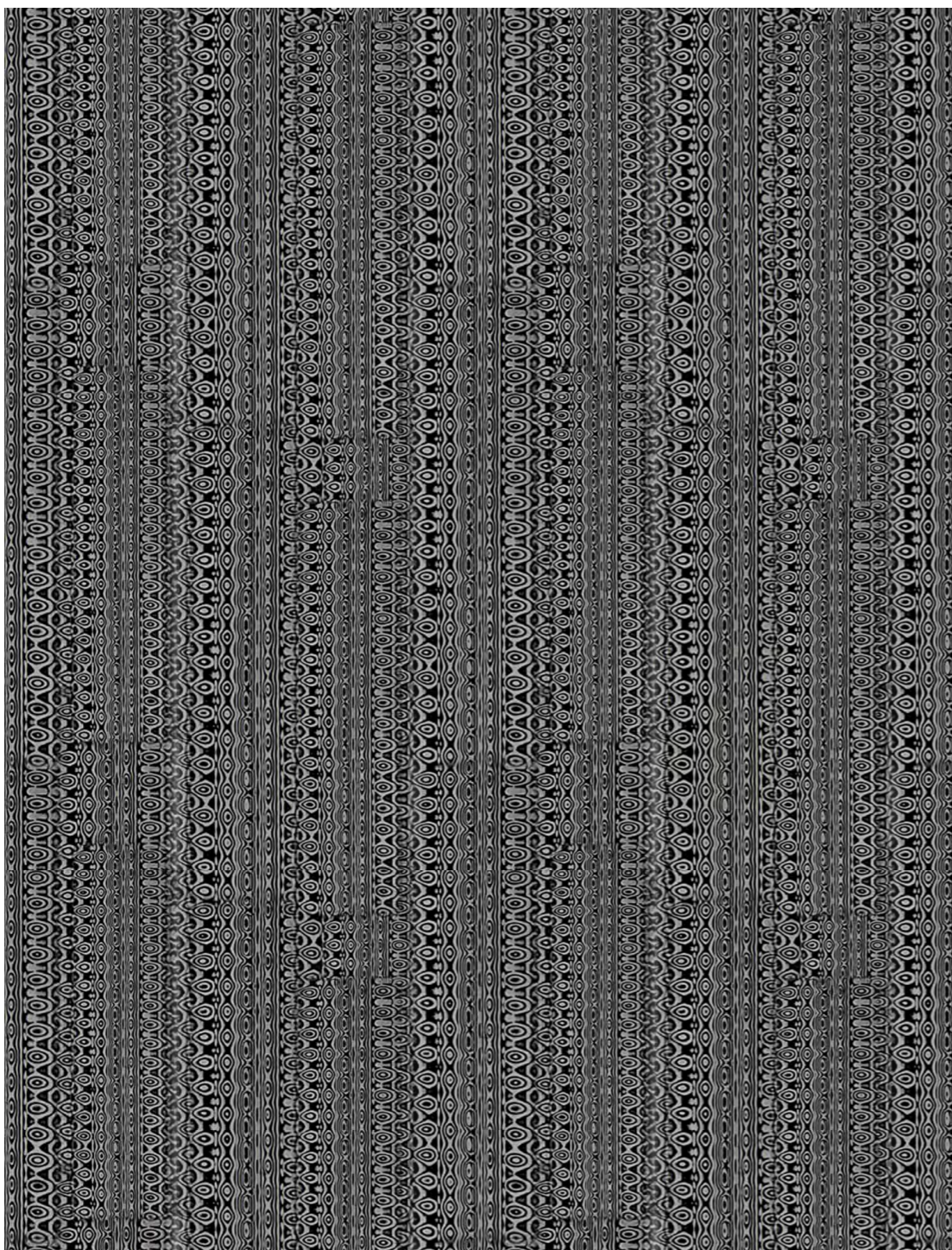


# Twice the Style Collection

Work of Art  
Sneak Peek

LVT





## Twice the Style

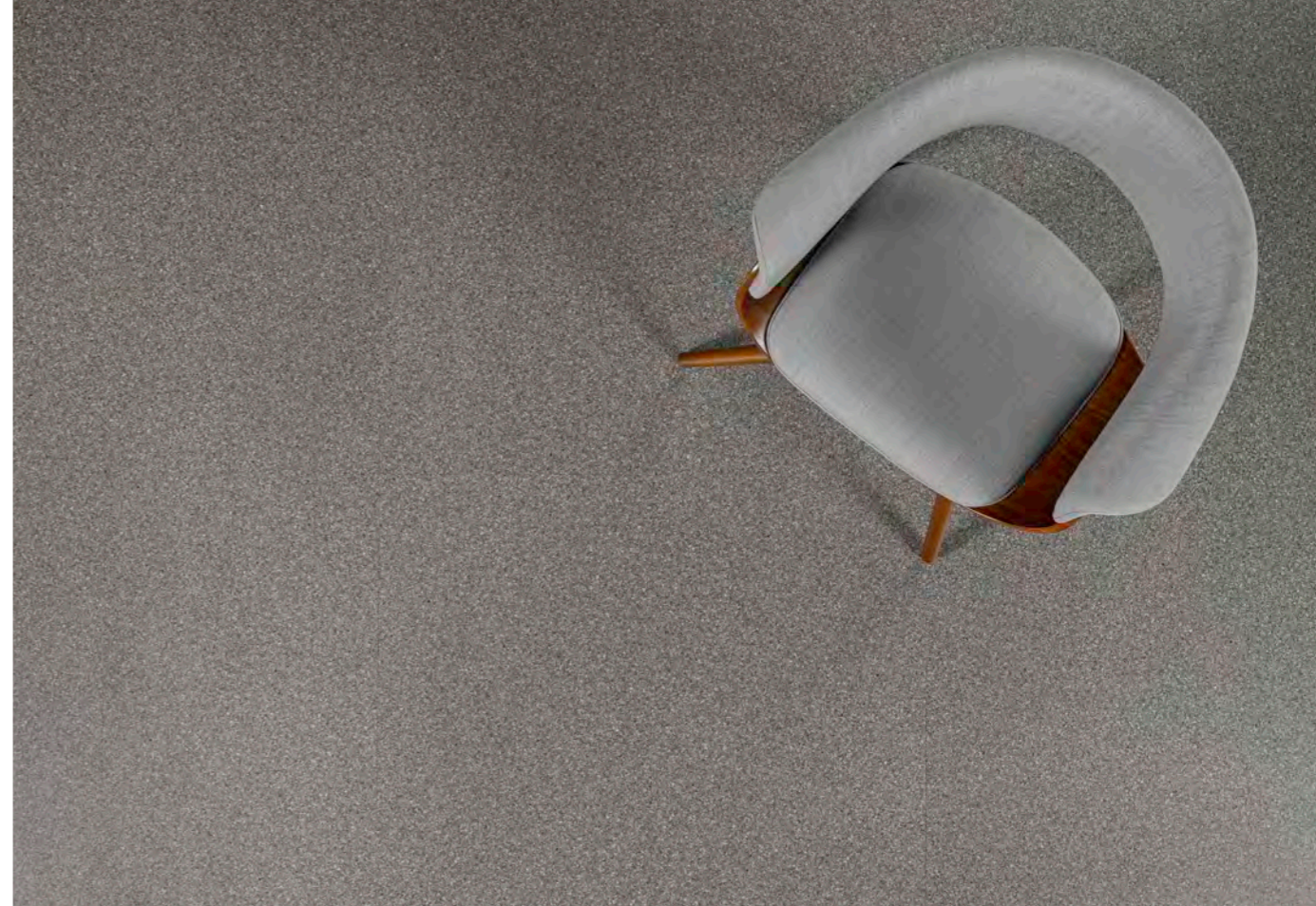
Blending function with elegant, but approachable, design, Twice the Style Collection incorporates a modern take on old-world hand crafted elements in two distinct LVT styles – twice as nice with two times the charm. Inspired by the intricate, acid-etched patterns of Damascus Steel, **Work of Art** features alternating squares resembling the texture of a fire-forged finely woven motif. This engaging mosaic effect creates a distinct and visually striking look. Available in four 18" x 36" colorways of LVT tiles. Versatile and polished, **Sneak Peek** is a micro terrazzo with a pebble and marble mixed aggregate that creates a minimalist backdrop. Its beautiful, hazy neutrals provide a modern, airy customizable aesthetic. Available in four colorways of 18" x 36" LVT tiles.







WORK OF ART - CRAFTSMAN - ASHLAR



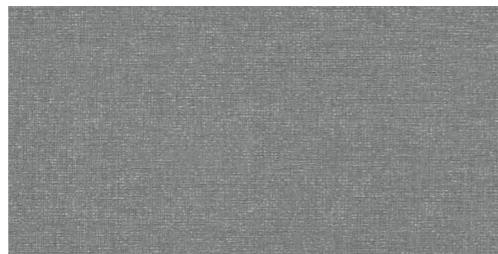
SNEAK PEEK - SHOWING - ASHLAR

## WORK OF ART

18" X 36"



ECWA2 001 | FAMOUS  
(AVAILABLE IN ECWA5 001)



ECWA2 004 | BEAUTY  
(AVAILABLE IN ECWA5 004)



ECWA2 006 | CRAFTSMAN  
(AVAILABLE IN ECWA5 006)



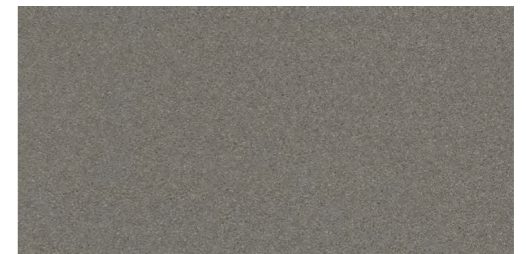
ECWA2 005 | APPRECIATE  
(AVAILABLE IN ECWA5 005)

## SNEAK PEEK

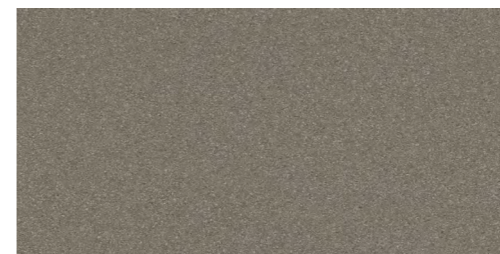
18" X 36"



ECSP2 001 | PREVIEW  
(AVAILABLE IN ECSP5 001)



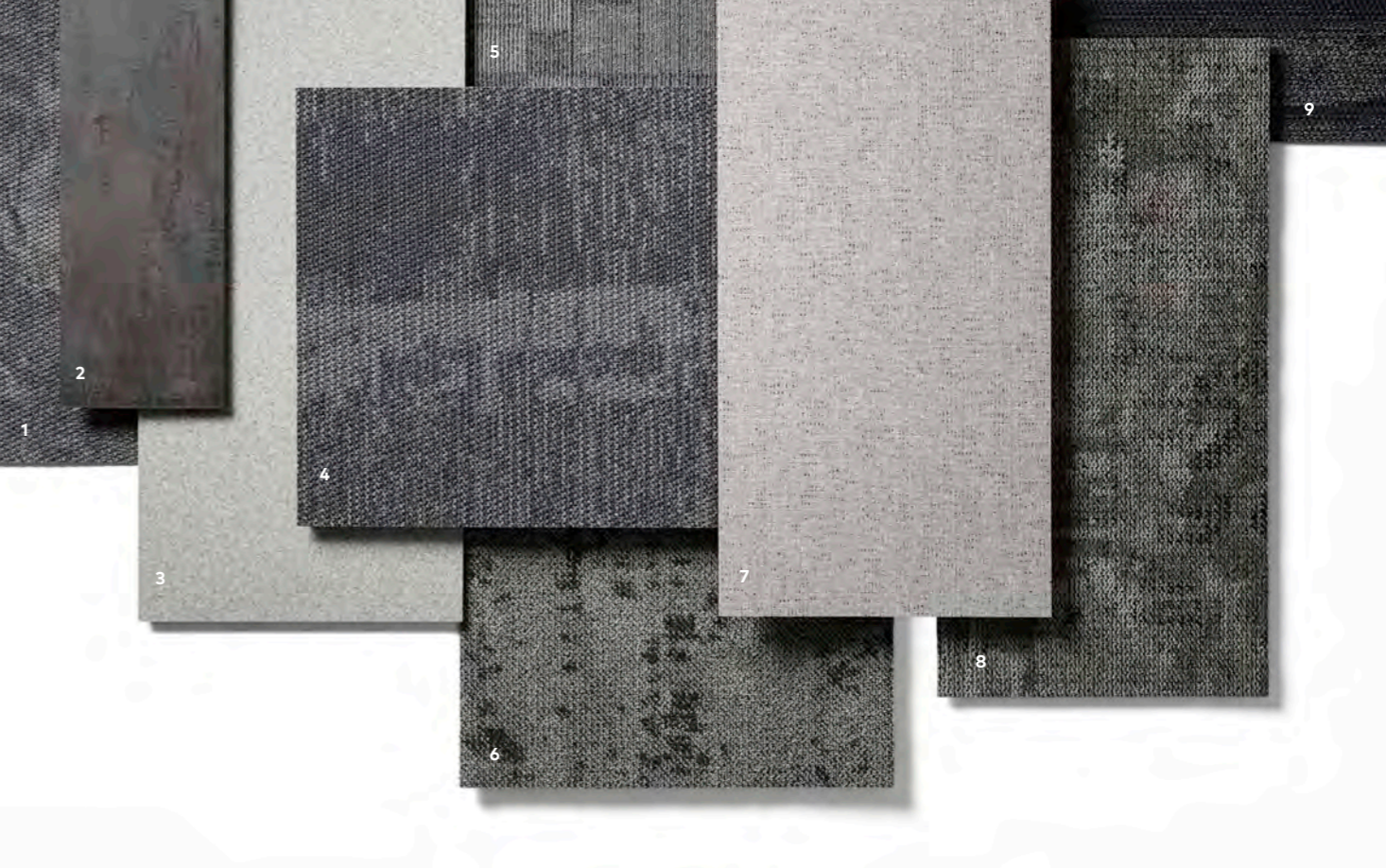
ECSP2 002 | EARLY  
(AVAILABLE IN ECSP5 002)



ECSP2 003 | SECRET  
(AVAILABLE IN ECSP5 003)



ECSP2 004 | SHOWING  
(AVAILABLE IN ECSP5 004)



### COORDINATING PALETTES

Beyond the beauty of individual products, EF Contract’s flooring **coordinate effortlessly** across all of our product platforms - modular carpet tile, broadloom, LVT and Kinetex textile composite flooring. This offering enables you to blend a range of designs to create **palettes** that meet the demands of each unique space.

1	IMPRINT - RAVEN	IMP56	KINETEX
2	MELANGE - ANDIRON	007	LVT
3	SNEAK PEEK - PREVIEW	001	LVT
4	DUAL - EXTERIOR	DUL58	KINETEX
5	SIGNET - ASH	SIG52	MODULAR
6	MUSICAL - PLAY	MUS56	MODULAR
7	WORK OF ART - FAMOUS	001	LVT
8	INTERCHANGEABLE - STANDARDIZED	INT58	MODULAR
9	DOUBLE - MELODY	DLE58	KINETEX



## COORDINATING PALETTES

Beyond the beauty of individual products, EF Contract's flooring **coordinate effortlessly** across all of our product platforms - modular carpet tile, broadloom, LVT and Kinetex textile composite flooring. This offering enables you to blend a range of designs to create **palettes** that meet the demands of each unique space.

1	SOCIALITE - NEWPORT	SOC28	MODULAR
2	PLAYBOOK - FOSSIL	O05	LVT
3	TRUSTWORTHY - SIMILAR	TRY15	MODULAR
4	SNEAK PEEK - SECRET	O03	LVT
5	DUAL - OUTWARD	DUL15	KINETEX
6	MUSICAL - NEWPORT	MUS28	MODULAR
7	PLAYBOOK - CLOUD	O09	LVT
8	DOUBLE - ACCENT	DLE15	KINETEX
9	IMPRINT - TAUPE	IMP19	KINETEX



Sustainably Sound

EF Contract believes true sustainability requires full attention to the potential impacts of every aspect of our business. In accordance with our mission of waste reduction, EFC LVT products are 100% recyclable. You can rest assured that health is also a top priority and all EF Contract's LVT products are FloorScore Certified.



Moisture

Are high levels of moisture in your concrete slab causing issues with your project's floor covering? We can help.

- » Cost-efficient
- » Long-term performance
- » Requires no special floor preparation

Installed without Commercialon® Premium Sealer	90% RH, pH 9
Installed with Commercialon® Premium Sealer	99% RH, pH 11 (Tiletabs, 5mm) 97% RH, pH 11 Commercialon Adhesive (2.5mm, 3mm)

Commercialon® Premium Modular Adhesive

A high strength acrylic latex-based adhesive specifically formulated for bonding modular PVC backed carpet and LVT to the floor. This premium adhesive is for use with all Nexus Modular Tile and EF Contract LVT products. This adhesive is guaranteed for the life of the installation when used in accordance with the EF Contract Carpet and LVT installation instructions. Commercialon Premium Modular Adhesive meets the CRI Low-VOC Emission Criteria, CRI ID# PSA-425402. Commercialon Premium Modular Adhesive is non toxic, has ultra-low odor and is antimicrobial in the dry state.

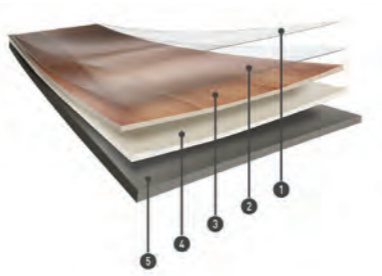
OPTIONAL:

**TileTabs** - High Tack Adhesive Tabs (5mm only)

Warranties

We stand behind every aspect of our LVT. Each warranty is covered for 10 years, provided that installation and maintenance is in accordance with EF Contract's LVT Installation instructions.

Installed with Commercialon® Premium Adhesive (non-prorated)	Installed with TileTabs	Installed with any other adhesive
15 years	15 years (5mm only)	1 Year



- 1 Protective UV Cured Urethane with Ceramic Bead
- 2 Wear Layer
- 3 High Definition Print Film
- 4 Impact Resistant Core Layer
- 5 Foundational Base Layer

STYLE	WORK OF ART   ECWA2 / ECWA5	SNEAK PEEK   ECSP2 / ECSP5
THICKNESS	2.5MM / 5MM	2.5MM / 5MM
WEAR LAYER	20MIL	20MIL
FINISH/COATING	ENHANCED UV URETHANE W/ CERAMIC MICRO BEAD	ENHANCED UV URETHANE W/ CERAMIC MICRO BEAD
PATTERN REPEAT	RANDOM	RANDOM
NOMINAL DIMENSIONS (INCHES)	18" X 36"	18" X 36"
STANDARD ADHESIVE	COMMERCIALON PREMIUM MODULAR AND LVT ADHESIVE	COMMERCIALON PREMIUM MODULAR AND LVT ADHESIVE
BACKING CLASS	COMMERCIAL GRADE	COMMERCIAL GRADE
COMMERCIAL TRAFFIC	HEAVY COMMERCIAL	HEAVY COMMERCIAL
STANDARD WARRANTIES	15 YEAR LVT	15 YEAR LVT
PACKAGING		
SQ.FT. PER CARTON	54 / 27	54 / 27
PIECES PER BOX	12 / 6	12 / 6
BOXES PER PALLET	40	40
SPECIAL TECHNOLOGIES		
ANTIMICROBIAL	YES	YES
ENVIRONMENTAL SPECIFICATIONS & TESTS		
INDOOR AIR QUALITY	FLOORSORE® CERTIFIED	FLOORSORE® CERTIFIED
LEED V4	CONTRIBUTES TO IAQ: LOW EMITTING MATERIALS	CONTRIBUTES TO IAQ: LOW EMITTING MATERIALS
END OF LIFE	100% RECYCLABLE	100% RECYCLABLE
CLASS / ASTM F1700	CLASS III PRINTED FILM VINYL PLANK - TYPE B (EMBOSSSED)	CLASS III PRINTED FILM VINYL PLANK - TYPE B (EMBOSSSED)
FLOORING RADIANT PANEL	CLASS 1	CLASS 1
ADA COMPLIANCE	COMPLIANT FOR ACCESSIBLE ROUTES	COMPLIANT FOR ACCESSIBLE ROUTES
RECOMMENDED INSTALLATION METHODS	<div><div><div>↑</div><div>↑</div><div>↑</div><div>↑</div><div>↑</div><div>↑</div></div><div><div>→</div><div>→</div><div>→</div><div>→</div><div>→</div><div>→</div></div><div><div>→</div><div>→</div><div>→</div><div>→</div><div>→</div><div>→</div></div><div><div>→</div><div>→</div><div>→</div><div>→</div><div>→</div><div>→</div></div></div> <div>ASHLAR</div> <div>HERRINGBONE</div> <div>PARQUET</div> <div>BASKETWEAVE</div>	



PO Box 2207  
Dalton, Georgia 30722  
U.S.A.

800.451.1250  
[efcontract.com](http://efcontract.com)  
AX9325M04