

# TileTabs®

## Modular Carpet Connectors Installation Instructions for Nexus® Modular

TileTabs connectors are a glue-free installation system designed for installation of J+J Flooring Group, EF Contract and Pentz modular carpet tiles.

This system eliminates the need for full spread adhesive which requires dry time. TileTabs have low odor which makes them ideal for use in schools, health care facilities, public buildings and anywhere odor is a concern and rapid, mess-free installation is important.

*Make sure you inspect carpet modules prior to installation. No claims will be honored if modules are installed with visible defects. Read all instructions prior to beginning installation.*

### Backing Specific TileTabs

TileTabs for Nexus Modular backing feature a blue printed back.

### Site and Modular Material Conditioning

The building must be enclosed and the HVAC in continuous operation.

Modules must be conditioned to room temperature for 48 hours prior to installation. The ambient air relative humidity must be below 65% with the floor and room temperature between 65°F – 95°F. These conditions must be maintained for a minimum of 48 hours prior to the installation, during, and at least 48 hours after completion of the installation.

### Surface Preparation

Dust, dirt, and debris, and non-compatible adhesive must be removed before the installation begins. Pre-existing, dissimilar adhesives must be either mechanically removed, hand scraped to bare residue or encapsulated using cement-based patching compound. The substrate must be smooth and level with all cracks and holes filled using a Portland cement based patch reinforced with polymers. When adhesive residue of any type is present, encapsulate with Commercialon® Premium Sealer.

*Note: Failure to remove or encapsulate pre-existing adhesives may cause installation failure, shifting, buckling, doming or edge curling; these conditions will not be covered under warranty when surface preparation instructions are not followed.*

### Substrates

TileTabs are recommended for use on the following:

Concrete on grade, below or above grade in the absence of excessive alkali or moisture, hardwood, APA floor grade plywood, tile, terrazzo, and well-bonded existing hard surface floor covering.

Floors must be clean, dry and free of concrete sealers, existing adhesive, curing compounds, wax, oil, paint or any foreign matter that will interfere with a good bond. The installation site must be acclimated with HVAC in operation. The floor and room temperature, as well as flooring materials and adhesive, must be maintained at 65°- 95°F, and the humidity below 65% for 48 hours prior to, during, and after the testing and installation. Do not use on substrates that have been chemically cleaned.

### Concrete Moisture Testing and pH Testing

Concrete subfloors must be tested for moisture per ASTM F 2170. Onsite relative humidity readings (ASTM F 2170) must not exceed 90%, and pH must be between 7.0 and 9.0. For test results that determine RH readings above 90% - 99% or pH readings of 9.0 – 11.0, Commercialon Premium Sealer is required. An intact moisture vapor barrier is required for on-grade or below-grade subfloors. RH probe type testing and pH testing is required prior to the installation start. These test results are to be recorded and saved. The results from testing must not exceed the manufacturer's published limits. Since both moisture and pH can increase over time, the manufacturer is not responsible for product failure as a result of changes to subfloor conditions, including increases in moisture or pH levels post installation.

### Subfloors

**New Concrete:** New concrete must be fully cured, free of moisture, sound, clean and meet industry standards as defined in ACI Committee 302.1.04R Report (see ASTM F 710). New concrete requires a curing period of approximately 90 days.

**Old Concrete:** Old concrete must be checked for moisture. Dry, dusty, porous floors must be primed or encapsulated with Commercialon Premium Sealer.

*Note: Primers will not correct a moisture problem.*

**Wood:** Wood floors must be smooth and level. If the floor is uneven, an approved underlayment will be required. Old finishes must be tested for compatibility with adhesives or removed and porous wood primed.

**Terrazzo / Marble:** Level all grout lines

# TileTabs®

## Modular Carpet Connectors Installation Instructions for Nexus® Modular

with Portland cement-based patch reinforced with polymers. Glossy surfaces must be sanded for adhesive bond. Waxes and similar finishes must be removed.

**Hard Surfaces:** Tiles must be well secured to the floor or removed. Broken, damaged, or loose tiles must be replaced.

**Gypcrete:** Gypcrete subfloors must be fully cured and free of high moisture (see ASTM F 2170-2). Gypcrete requires a curing period of approximately 90 days. Additionally, Gypcrete must be treated using primer in advance of applying adhesive.

### Modular Placement

Arrows are embossed or printed on the module backing to show pile direction. To ensure proper alignment, check spacing every ten modules. Measure ten modules; proper spacing should be within ¼ inch. Continue to check spacing every ten modules throughout the entire installation.

### Pallet and Bundle Sequencing

It is very important to install Modular tiles in the order they were manufactured; this is easily accomplished by selecting pallets in sequential order and following the numbers located on each bundle of tiles. Typically, an installation will begin with the lowest bundle numbers and progress through the highest numbers until the project is complete. Installing Modular tiles by bundle sequence will assure the most even uniform look possible.

### Flatwire Cable / Trench Headers

Cable should be centered under modules and no adhesive used unless approved by the manufacturer. Trench headers require a control grid of adhesive on either side of header panels to prevent movement. It is highly recommended that these areas be installed ashlar.

### Finished Installation

Roll entire job with 75-100 lb. roller after completion of installation.

### Chair Pads

Chair pads are highly recommended for use under chairs with roller casters. If chair pads are not used, the appearance of the modules will decrease and maintenance and/or shifting of the modules may be required more frequently.

### Loop Pile Construction

Carpet modules with loop pile constructions may experience yarn blossoming at the edges, which is consistent with this type of construction and is not considered a manufacturing defect. Clipping or shearing the yarn edges will remedy this condition.

### Replacement Modules

On occasion, it may be necessary to replace damaged or heavily soiled modules. Modules can be replaced with new modules from on-site inventory or from another area of the installation. A difference in appearance may be noticed when modules are replaced; this difference usually diminishes in a short time.

*recommendations for installing Modular Carpets. The Carpet Installation Handbook and Carpet Maintenance Handbook are available at [jjflooringgroup.com](http://jjflooringgroup.com), [efcontractflooring.com](http://efcontractflooring.com) and [pentzcommercial.com](http://pentzcommercial.com). If you have further questions or require additional information, please contact our Customer Relations Department.*

*The procedures listed above are our best*

# TileTabs®

## Modular Carpet Connectors Installation Instructions for Nexus® Modular

### TileTabs Quick Reference Installation Instructions

**A) With the first module in position on the floor, place the TileTab under the corner of the tile with "THIS SIDE UP." The low tack side, labeled "THIS SIDE DOWN," should be in contact with the floor, and the high tack side should be in contact with the modular backing.**

**B) Lay the next carpet module onto the exposed adhesive of the TileTab.**

**C) Continue laying modules and TileTabs at the intersections of the module corners. Apply TileTabs at edges of modules. (See "C" diagrams.)**



A.1 Peel the TileTab from the roll



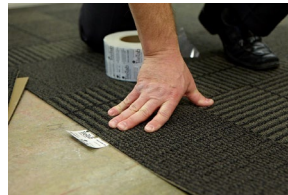
A.2 Place under the module



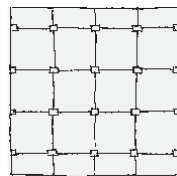
A.3 "THIS SIDE UP" facing up



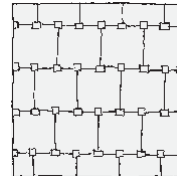
B.1 Position the next module



B.2 Press it into place



C. TileTab placement for Monolithic or Quarter Turn Application



C. TileTab placement for Ashlar or Brick Application\*

\*Ashlar and Brick installations generally require 35% more TileTabs than Monolithic and Quarter Turn installations.