

Quickship

Terrain Park

MODULAR CARPET





Terrain Park

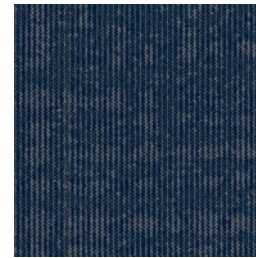
Look around any corner in your city—find places to rest and play. Terrain Park is where earth meets urban, available in 10 colors—muted for reflection, high contrast for excitement. Find your ground.





24" X 24" MODULAR

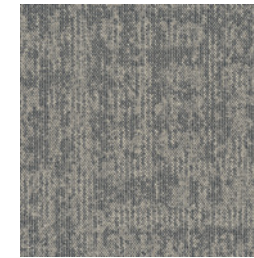
TERRAIN PARK



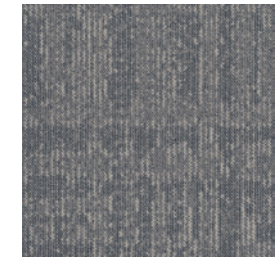
TER47 | NIGHTFALL



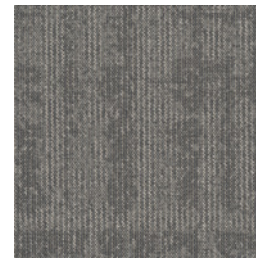
TER52 | STRAND



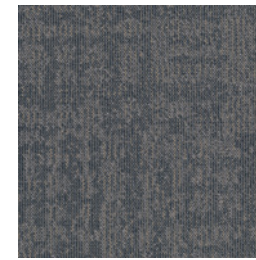
TER53 | SMOKE



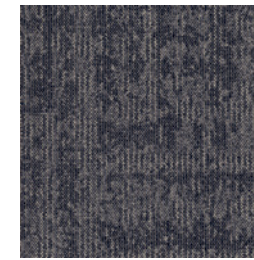
TER54 | GRAYNESS



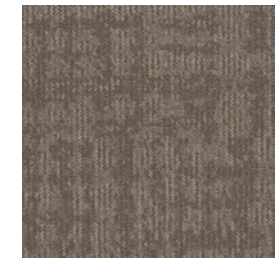
TER55 | RIVERSTONE



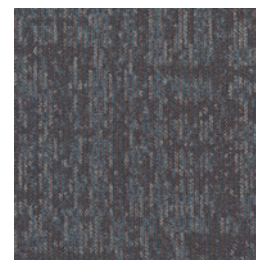
TER56 | SHALE



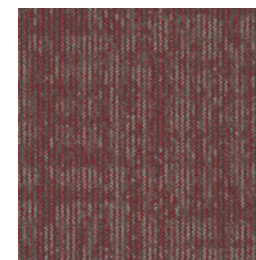
TER59 | BLACKSTONE



TER73 | ADOBE



TER76 | EARTH



TER84 | CRIMSON

SCAN ME!



Scan to order samples or check inventory.



10 business days or less for orders up to 1,500 square yards on standard backing systems.

Samples & Customer Service 800-451-1250



COORDINATING PALETTE

Beyond the beauty of individual products, EF Contract's flooring **coordinate effortlessly** across all of our product platforms - modular carpet tile, broadloom, LVT and Kinetex textile composite flooring. This offering enables you to blend a range of designs to create **palettes** that meet the demands of each unique space.

1	INTRIGUE - TANTALIZE	ITR85	KINETEX
2	DART - SPRING	DAR87	KINETEX
3	LINE ACCENT - CHARCOAL ACCENT	LNA57	MODULAR
4	CROSSWALK - DRIFTWOOD	CWK12	MODULAR & BROADLOOM
5	MELANGE - PHANTOM	006	LVT
6	ARTISAN - SLOE	ART58	MODULAR
7	TERRAIN PARK - STRAND	TER52	MODULAR
8	WOODLANDS II - MOCHA	010	LVT
9	TERRAIN PARK - CRIMSON	TER84	MODULAR
10	COMMON THREAD - PEWTER RAPPORT	CMT51	MODULAR & BROADLOOM

PRODUCT DETAILS

Fiber

ENCORE® SD ULTIMA NYLON (WITH RECYCLED CONTENT) Specifically engineered to maximize appearance retention with exceptional color, performance, sustainability and practicality.

Fiber Option

ENCORE 100 The high recycled content incorporated into Encore 100 nylon provides a reduced environmental impact without compromising quality or color clarity.

- 100% post-industrial (pre-consumer) recycled content
- Full inclusion into the EF Contract Carpet Reclamation Program
- Lifetime warranty for stain removal, colorfastness, wear and static

Moisture

Are high levels of moisture in your concrete slab causing issues with your project's floor covering? We can help.

- Nexus Modular Carpet with TileTabs - 99% RH
- Cost-efficient
- Long-term performance
- Straightforward, easy-to-understand Lifetime warranty
- Requires no special floor preparation

RH/pH Warranty

Warranty: Installed With TileTabs	Lifetime
Warranty: Installed With Commercialon® Premium Adhesive (non-prorated)	Lifetime
Warranty: Installed With Any Other Adhesive	1 year
Max RH, pH Installed Without Commercialon® Sealer	90% RH, pH 9
Max RH, pH Installed With Commercialon® Premium Sealer	99% RH, pH 11 (TileTabs) — 97% RH, pH 11 (Commercialon)

Backings

NEXUS® MODULAR Nexus modular products can be installed in a variety of ways and are performance engineered to be visually appealing. In addition, they are designed to accommodate your long-term flooring budget.

- Contains pre-consumer recycled content and contributes to LEED
- Recyclable through EF Contract's R4 Carpet Reclamation Program

Adhesives

COMMERCIALON® PREMIUM MODULAR ADHESIVE A high-strength acrylic latex-based carpet adhesive specifically formulated for bonding modular PVC-backed carpet to the floor. This premium adhesive is for use with all Nexus Modular Tile products. This adhesive is guaranteed for the life of the installation when used in accordance with the EF Contract Carpet Installation Handbook. Commercialon Premium Modular Adhesive meets the CRI Low-VOC Emission Criteria. Commercialon Premium Modular Adhesive is nontoxic, has ultra-low odor and is antimicrobial in the dry state.

Optional

TILETABS High Tack Adhesive Tabs (modular only)

Technologies

PROTEX® SOIL RELEASE ProTex is a proprietary soil release technology that is applied and bonded to the pile fiber to impede soiling and to improve cleanability. It is standard on all EF Contract flooring products.

Optional

PROSEPT® ANTIMICROBIAL SENTIR® ADVANCED ODOR-BLOCKING TECHNOLOGY



©2021 Engineered Floors LLC - This unique design is protected under the U.S. Copyright Act of 1976. Any unauthorized copying or duplication of this design constitutes copyright infringement in violation of federal law.

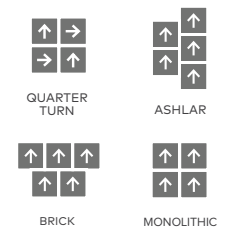
Due to the unique visual characteristics of modular carpets, pattern repeats and pattern run-off seams may appear more noticeable than in broadloom carpets. Such visual characteristics do not constitute a manufacturing defect, and as such, should be considered when selecting modular carpet and its installation. These photographs are representations of the installation for this modular product. Your modular installation may look different than these photos depending upon individual tile placement, lighting and overall space layout, including furnishings. Final tile placement and the resulting visual is thus the customer's, and not EF Contract's, responsibility.

To learn more, visit:

EFCONTRACTFLOORING.COM

STYLE	TERRAIN PARK TTER
CONSTRUCTION	PATTERNED SCROLL
FIBER TYPE	ENCORE® SD ULTIMA® (WITH RECYCLED CONTENT)
DYE METHOD	SOLUTION DYED
OUNCE WEIGHT	15 OZ / SQUARE YARD
GAUGE	1/12 IN
BACKING	NEXUS® MODULAR
TOTAL THICKNESS	0.225 INCHES
SIZE	24" W X 24" L
PATTERN REPEAT	N/A
SPECIAL TECHNOLOGY	PROTEX® SOIL RELEASE
OPTIONAL SPECIAL TECHNOLOGIES	PROSEPT® ANTIMICROBIAL SENTIR® ADVANCED ODOR BLOCKING TREATMENT
PHYSICAL TESTING	FLOORING RADIANT PANEL – (CLASS 1) PILL TEST – (PASSES) SMOKE DENSITY – (LESS THAN 450 FLAMING) STATIC GENERATION – (LESS THAN 3.5 KV)
FIBER WARRANTIES	LIFETIME FIBER PERFORMANCE FOR WEAR LIFETIME FIBER PERFORMANCE FOR STATIC LIFETIME STAIN REMOVAL LIFETIME COLORFASTNESS TO LIGHT AND ATMOSPHERIC CONTAMINANTS
BACKING WARRANTIES	LIFETIME FOR TUFT BIND STRENGTH (EDGE RAVEL, YARN PULLS, ZIPPERING) LIFETIME AGAINST DELAMINATION LIFETIME DIMENSIONAL STABILITY

RECOMMENDED INSTALLATION METHODS





 **EF Contract**[®]

PO Box 2207
Dalton, Georgia 30722
U.S.A.

800.451.1250
efcontractflooring.com
FX7822M02