

Next Generation Collection

Trustworthy
Interchangeable

MODULAR CARPET





Next Generation

With its intentionally layered shapes of varying scale and dimension, The Next Generation Collection was created to be both distinctive and statement-making - with a modern edge. Trustworthy offers a graphic mix of softly abstract brickwork, striking a balance of movement and symmetry throughout interior spaces. Interchangeable mimics the look of aged concrete with muted tones that fluidly shift from light to dark. Both products are available as 18" x 36" carpet tile in 10 rich, understated colors.











18" x 36" MODULAR

TRUSTWORTHY



TRY15
SIMILAR
QUICKSHIP



TRY10
COMMUTABLE



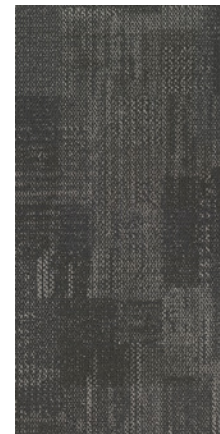
TRY58
STANDARDIZED
QUICKSHIP



TRY12
CAPABLE
QUICKSHIP



TRY43
ALTERATION



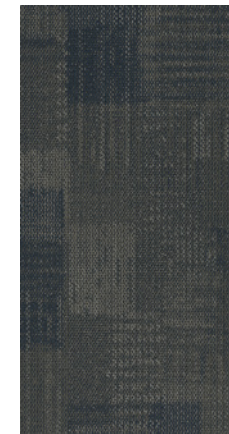
TRY16
REPLACEABLE



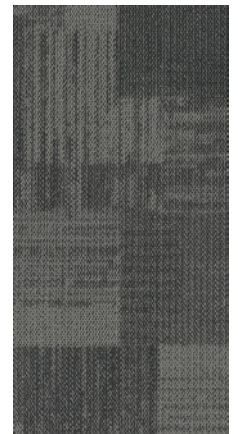
TRY33
EXCHANGE



TRY56
FUNCTION



TRY46
ADDITIONALLY



TRY40
SWITCHABLE

QS OPTIONS



10 business days or less for orders up to 1,500 square yards on standard backing systems.

Samples & Customer Service
800-451-1250

SCAN ME!



Scan to order samples or check inventory.

18" x 36" MODULAR

INTERCHANGEABLE



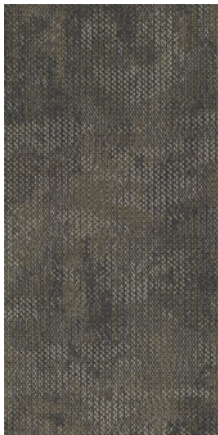
INT15
SIMILAR
QUICKSHIP



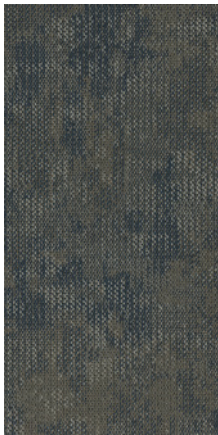
INT10
COMMUTABLE



INT58
STANDARDIZED
QUICKSHIP



INT12
CAPABLE
QUICKSHIP



INT43
ALTERATION



INT16
REPLACEABLE



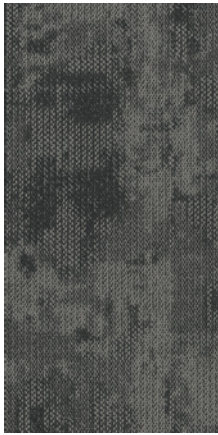
INT33
EXCHANGE



INT56
FUNCTION



INT46
ADDITIONALLY



INT40
SWITCHABLE

QS
OPTIONS



10 business days or less for orders up to 1,500 square yards on standard backing systems.

Samples & Customer Service
800-451-1250

SCAN ME!



Scan to order samples or check inventory.





TRUSTWORTHY - SIMILAR - ASHLAR | INTERCHANGEABLE - SIMILAR - BASKET WEAVE

COORDINATING PALETTE

Beyond the beauty of individual products, EF Contract's flooring **coordinate effortlessly** across all of our product platforms - modular carpet tile, broadloom, LVT and Kinetex textile composite flooring. This offering enables you to blend a range of designs to create **palettes** that meet the demands of each unique space.

1	CROSSWALK - SLATE	CWK57	MODULAR & BROADLOOM
2	INTRIGUE - CHARM	ITR17	KINETEX
3	WOODLANDS II - ACACIA	EFCW2008	LVT
4	VESTIGE - ASHEN	VES14	KINETEX
5	INTERCHANGEABLE - SIMILAR	INT15	MODULAR
6	VEIL - SHADE	VLT55	MODULAR
7	TRUSTWORTHY - SIMILAR	TRY15	MODULAR
8	MELANGE - FOGGY BEACH	005	LVT
9	VESTIGE - SOOT	VES56	KINETEX
10	CROSSWALK - DAPPLE GREY	CWK15	MODULAR & BROADLOOM

PRODUCT DETAILS

Fiber

TERAPLEX® SD
EF Contract's TeraPlex® SD, produced by the world's most advanced carpet fiber extrusion process, is an advanced generation continuous filament PET fiber engineered for today's commercial flooring needs. It was created by leading polymer scientists and utilizes the most advanced PET resin to create carpet fiber with vibrant color, superior fade resistance, and longterm performance.

- Fiber thickness is 40% greater than conventional PET fiber for excellent crush resistance
- Higher purity and high molecular weight polymer resists abrasion and staining
- Solution dyed for superior colorfastness

Moisture

Are high levels of moisture in your concrete slab causing issues with your project's floor covering? We can help.

- Nexus Modular Carpet with TileTabs - 99% RH
- Cost-efficient
- Long-term performance
- Straightforward, easy-to-understand Lifetime warranty
- Requires no special floor preparation

Backings

NEXUS® MODULAR
Nexus modular products can be installed in a variety of ways and are performance engineered to be visually appealing. In addition, they are designed to accommodate your long-term flooring budget.

- Contains pre-consumer recycled content and contributes to LEED
- Recyclable through EF Contract's R4 Carpet Reclamation Program

Warranty: Installed With TileTabs	Lifetime
Warranty: Installed With Commercialon® Premium Adhesive (non-prorated)	Lifetime
Warranty: Installed With Any Other Adhesive	1 year
Max RH, pH Installed Without Commercialon® Sealer	90% RH, pH 9
Max RH, pH Installed With Commercialon® Premium Sealer	99% RH, pH 11 (TileTabs) — 97% RH, pH 11 (Commercialon)
Max RH, pH Installed With Commercialon® High Moisture Adhesive	99% RH, pH 12

Adhesives

COMMERCIALON® PREMIUM MODULAR ADHESIVE
A high-strength acrylic latex-based carpet adhesive specifically formulated for bonding modular PVC backed carpet to the floor. This premium adhesive is for use with all Nexus Modular Tile products. This adhesive is guaranteed for the life of the installation when used in accordance with the EF Contract Carpet Installation Handbook. Commercialon Premium Modular Adhesive meets the CRI Low-VOC Emission Criteria. Commercialon Premium Modular Adhesive is nontoxic, has ultra-low odor and is antimicrobial in the dry state.

Optional

TILETABS
High Tack Adhesive Tabs (modular only)
COMMERCIALON® HIGH MOISTURE ADHESIVE

Technologies

PROTEX® SOIL RELEASE
ProTex is a proprietary soil release technology that is applied and bonded to the pile fiber to impede soiling and to improve cleanability. It is standard on all EF Contract flooring products

Optional

PROSEPT® ANTIMICROBIAL
SENTIR® ADVANCED ODOR-BLOCKING TECHNOLOGY
COMMERCIALON® HIGH MOISTURE ADHESIVE



PRODUCT DETAILS

STYLE	TRUSTWORTHY TTRY	INTERCHANGEABLE TINT
CONSTRUCTION	PATTERNED LOOP	PATTERNED LOOP
FIBER TYPE	TERAPLEX® SD PET	TERAPLEX® SD PET
DYE METHOD	SOLUTION DYED	SOLUTION DYED
OUNCE WEIGHT	19 OZ / SQUARE YARD	19 OZ / SQUARE YARD
GAUGE	1/12 IN	1/12 IN
BACKING	NEXUS® MODULAR	NEXUS® MODULAR
DENSITY	6,706	5,897
SIZE	18" X 36"	18" X 36"
PATTERN REPEAT	N/A	N/A
TOTAL THICKNESS	0.260 INCHES	0.268 INCHES
SPECIAL TECHNOLOGY	PROTEX® SOIL RELEASE	PROTEX® SOIL RELEASE
OPTIONAL SPECIAL TECHNOLOGIES	PROSEPT® ANTIMICROBIAL SENTIR® ADVANCED ODOR BLOCKING TREATMENT	PROSEPT® ANTIMICROBIAL SENTIR® ADVANCED ODOR BLOCKING TREATMENT
PHYSICAL TESTING	FLOORING RADIANT PANEL – (CLASS 1) PILL TEST – (PASSES) SMOKE DENSITY – (LESS THAN 450 FLAMING) STATIC GENERATION – (LESS THAN 3.5 KV)	FLOORING RADIANT PANEL – (CLASS 1) PILL TEST – (PASSES) SMOKE DENSITY – (LESS THAN 450 FLAMING) STATIC GENERATION – (LESS THAN 3.5 KV)
FIBER WARRANTY	LIFETIME FIBER PERFORMANCE FOR WEAR LIFETIME FIBER PERFORMANCE FOR STATIC LIFETIME STAIN REMOVAL LIFETIME COLORFASTNESS TO LIGHT AND ATMOSPHERIC CONTAMINANTS	LIFETIME FIBER PERFORMANCE FOR WEAR LIFETIME FIBER PERFORMANCE FOR STATIC LIFETIME STAIN REMOVAL LIFETIME COLORFASTNESS TO LIGHT AND ATMOSPHERIC CONTAMINANTS
BACKING WARRANTY	LIFETIME FOR TUFT BIND STRENGTH (EDGE RAVEL, YARN PULLS, ZIPPERING) LIFETIME AGAINST DELAMINATION LIFETIME DIMENSIONAL STABILITY	LIFETIME FOR TUFT BIND STRENGTH (EDGE RAVEL, YARN PULLS, ZIPPERING) LIFETIME AGAINST DELAMINATION LIFETIME DIMENSIONAL STABILITY



©2024 Engineered Floors LLC - This unique design is protected under the U.S. Copyright Act of 1976. Any unauthorized copying or duplication of this design constitutes copyright infringement in violation of federal law.

Due to the unique visual characteristics of modular carpets, pattern repeats and pattern run-off seams may appear more noticeable than in broadloom carpets. Such visual characteristics do not constitute a manufacturing defect, and as such, should be considered when selecting modular carpet and its installation. These photographs are representations of the installation for this modular product. Your modular installation may look different than these photos depending upon individual tile placement, lighting and overall space layout, including furnishings. Final tile placement and the resulting visual is thus the customer's, and not EF Contract's, responsibility.

To learn more, visit: EFCONTRACT.COM



PO Box 2207
Dalton, Georgia 30722
U.S.A.

800.451.1250
efcontract.com
JX4124M06