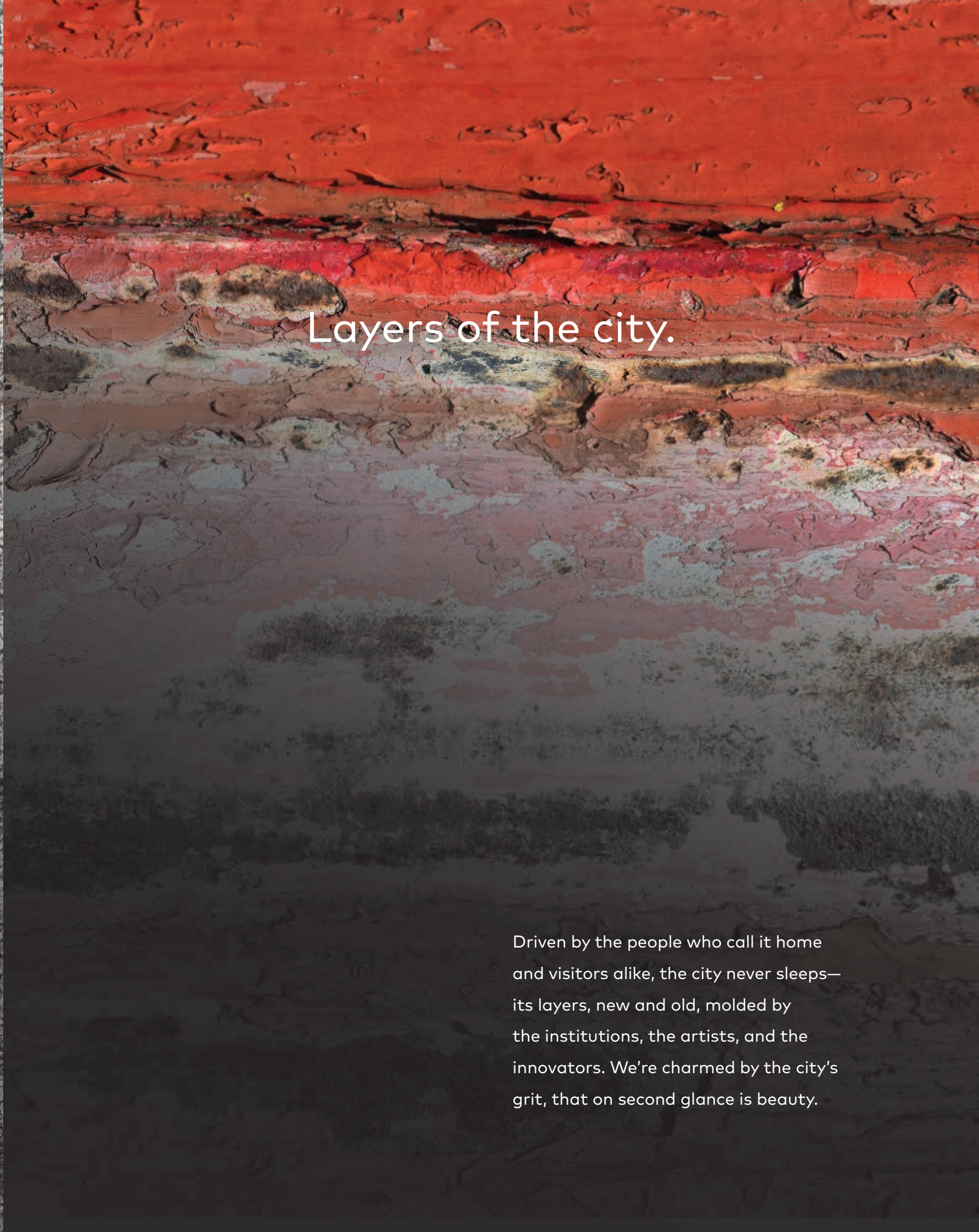
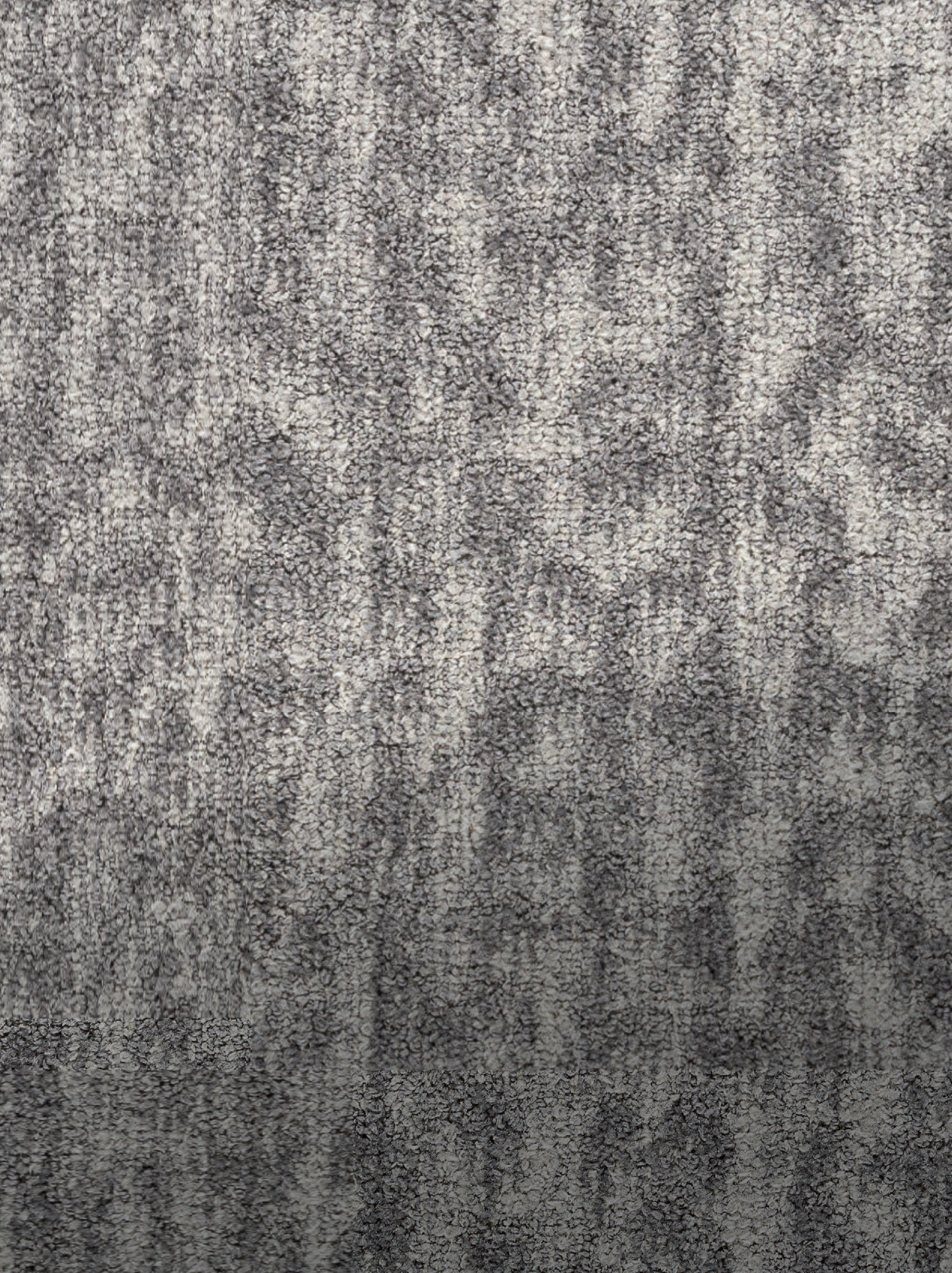


# Inhabit

 EF Contract

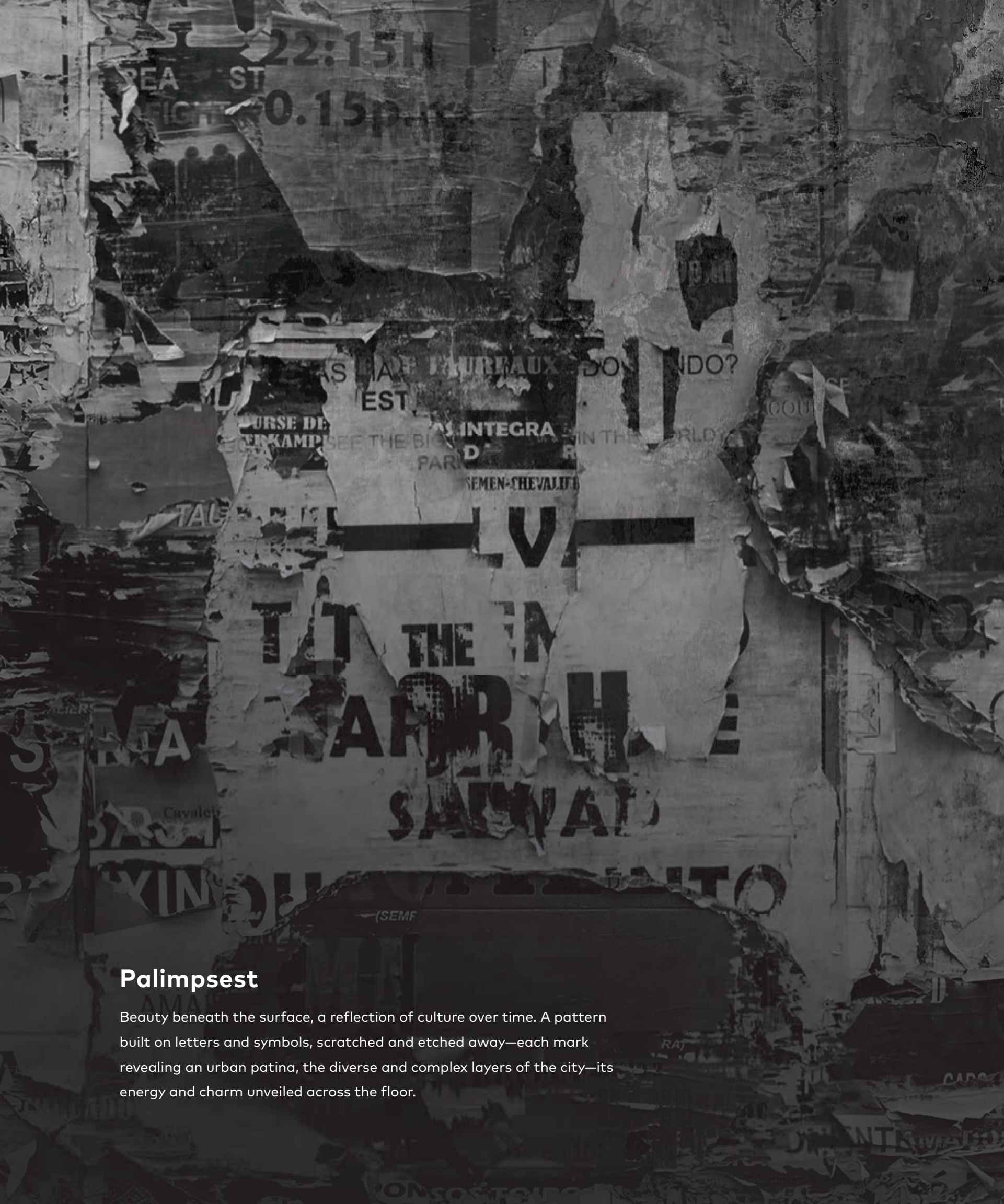


## Layers of the city.

Driven by the people who call it home and visitors alike, the city never sleeps—its layers, new and old, molded by the institutions, the artists, and the innovators. We're charmed by the city's grit, that on second glance is beauty.



It's the taste of a craft brew, the song of a guitar that echoes from a local stage, the peeling posters lining the walls of an alleyway. This is what inspired us to step back and realize—how it's the collective people inhabiting each city, adding these elements day by day, that slowly build a city's unique texture, layer upon layer.



## Palimpsest

Beauty beneath the surface, a reflection of culture over time. A pattern built on letters and symbols, scratched and etched away—each mark revealing an urban patina, the diverse and complex layers of the city—its energy and charm unveiled across the floor.

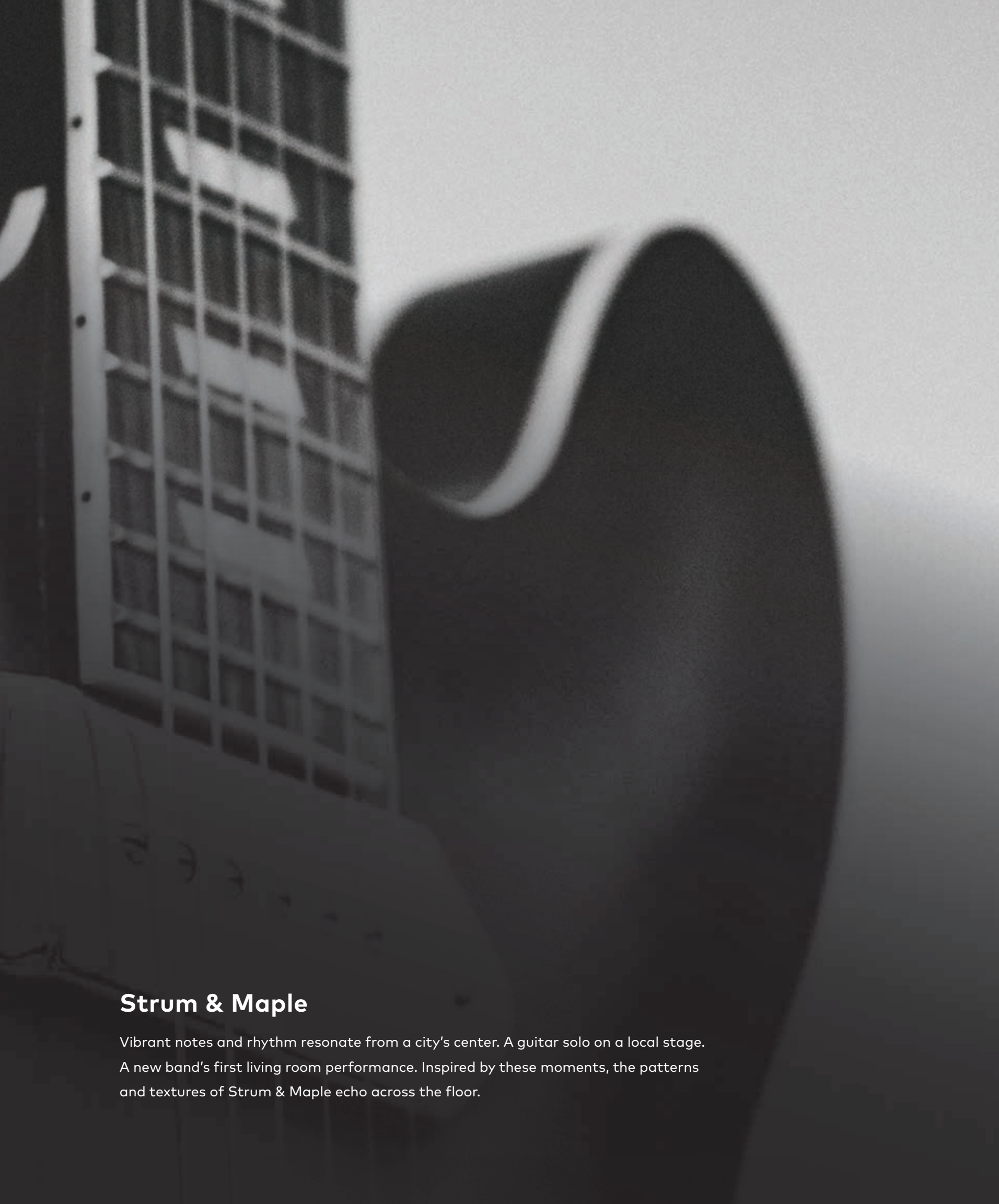




## Brewhouse

Four become one as barley, water, hops, and yeast transform to shape not just fine craft brew, but the surrounding culture, lives, and place that help create it. Just as a local draft can define a neighborhood, in Brewhouse, inspired design brings charm and distinction to any place.





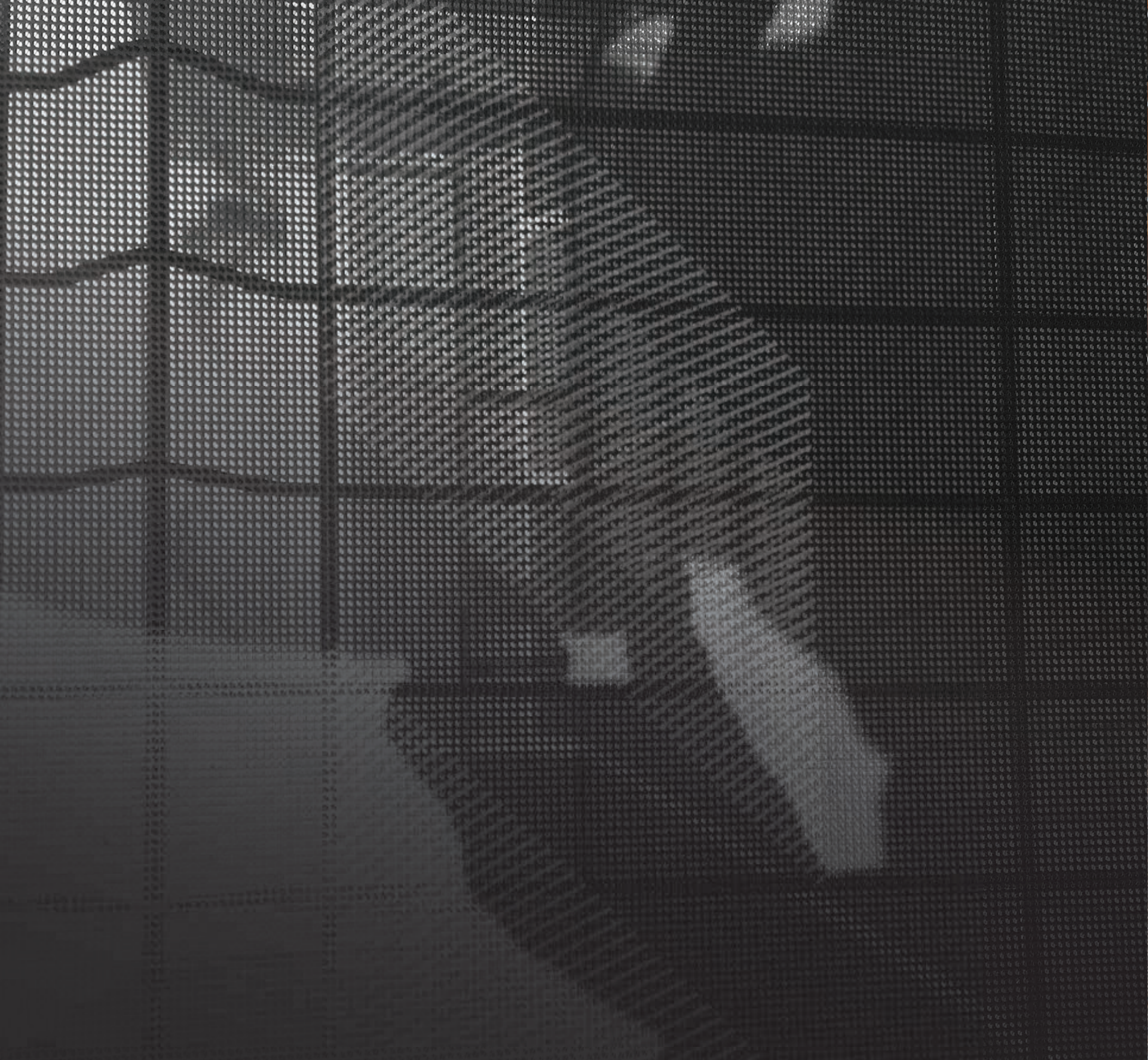
## Strum & Maple

Vibrant notes and rhythm resonate from a city's center. A guitar solo on a local stage. A new band's first living room performance. Inspired by these moments, the patterns and textures of Strum & Maple echo across the floor.









## Craft

Artisans and makers inspire a community, just as that community inspires their process and drives them to create. In Craft, we rely on WeaveTex™, our proprietary technical tufting process inspired by European textile design, to create a pattern that exhibits its form, function, and beauty across the floor.





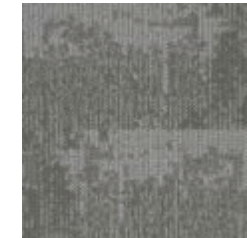
### Next + Switch

The next generation of LVT, this innovative collection transcends the traditional to unleash inspired and contemporary splendor. Patterns that resonate with their surroundings, Next + Switch provide a fresh take on flooring design.

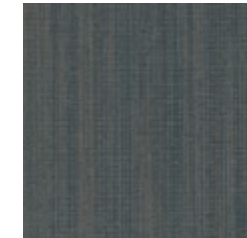


**Part of the fastest-growing, most progressive family of flooring companies, we stand for confidence in quality, relentless service, and doing right by all.**

Our products are inspired by you: offering the carpet and hard-surface flooring that you want and need, that you've been seeking but unable to find, until now. Every collection, pattern, and colorway are created with best-in-class performance and in pursuit of design that is simply beautiful.



**Artisan**  
Artisan pays tribute to the beauty and quality of made objects. Demonstrating skillfulness and attention to detail, this textural pattern is both fashionably organic and timeless. Available in 24 x 24 squares.



**Immerse**  
Banded together, texture and color drape the landscape creating beauty experienced within. An interactive pattern that engages with its surroundings, Immerse may thrive alone or join Spilled Ink to express both the subtle and bold aesthetics of any space. Available in 24 x 24 squares and broadloom.



**Common Thread**  
Designed to interplay with Artisan, Common Thread lives up to its name. This versatile tile can mix and mingle with several EF Contract products, providing a new layer of flexibility to flooring design. Available in 12 x 48 planks.



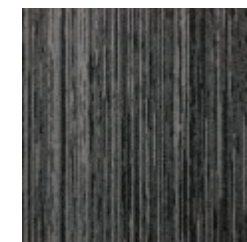
**Cascade**  
Warm spring rains fall with form, flowing with rippled innocence to nature's edge. An ever-emergent exploration of pattern and shape, Cascade delivers a tide of stylish simplicity and refreshing luxury to any space. Available in 24 x 24 squares.



**Folded Paper**  
Starting with the shapes of light and shadow created by manipulating paper, our Design Studio has crafted carpet patterns that translate the geometry of straight-line folds and the organic hand of paper. Available as Crease - 24 x 24 squares, Pleat and Tuck - 12 x 48 planks. (Crease shown here.)



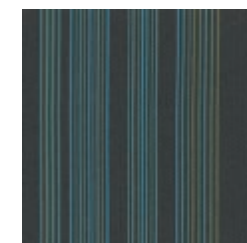
**Chinook**  
Strong winds carve and sculpt a path previously unimagined, capturing the landscape with each push and pull of a steady breeze. Inspired by the warming ocean wind of the Pacific Northwest, Chinook delivers a breath of reassuring luxury and style to any space. Available in 24 x 24 squares.



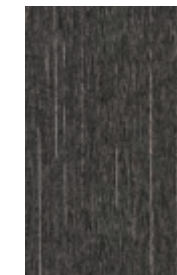
**Metro**  
Inspired by the flashing lights of traffic, Metro's kinetic lines bring a hint of drama to a highly versatile tile. Available in 24 x 24 squares.



**Sirocco**  
Dust and rain grate the surface, carving a predestined path one has no choice but to follow. Inspired by warm, humid Mediterranean winds, Sirocco delivers a breezy sophistication, steeped in style and luxury, to any space. Available in 12 x 48 planks.



**Spree**  
What happens when modern design meets a new, truly innovative kind of flooring? Behold: a classic stripe pattern, reborn as Kinetex. Available in 24 x 24 squares.



**Garage Band**  
Raw and energetic, Garage Band projects a straightforward attitude in its styling. Its low-profile, edgy appearance is attained through our innovative, proprietary technical tufting process, WeaveTex™—adding a distinctive vibe to any space. Available in 12 x 48 planks.



**Dart**  
A classic palette, with a dash of highly saturated bravado thrown into the mix. Optimize any space, add accents and more with this highly usable tile—with all of the performance attributes that Kinetex® offers to the floor. Available in 24 x 24 squares and 12 x 48 planks.

