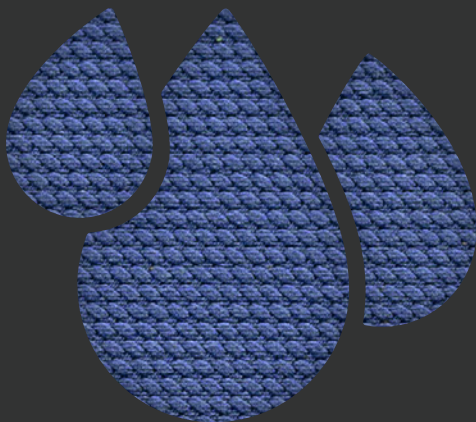
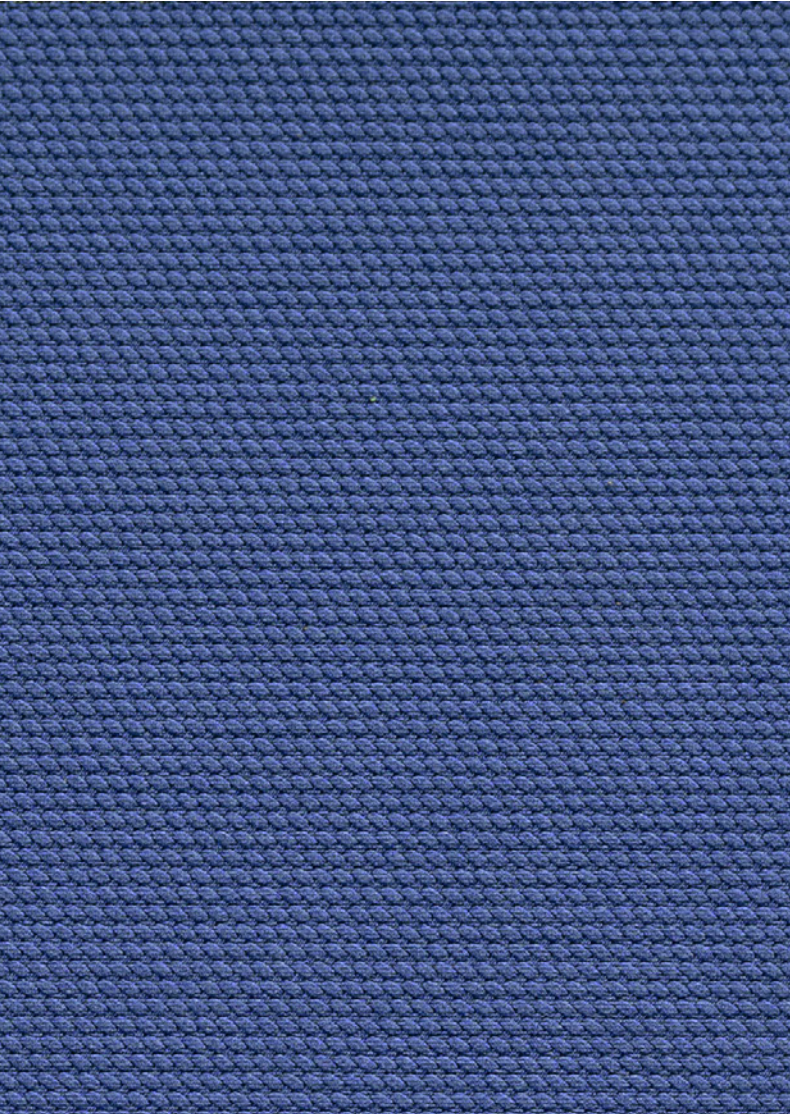


# kinetex<sup>®</sup>

*Textile Composite Flooring*



 **EF Contract<sup>™</sup>**

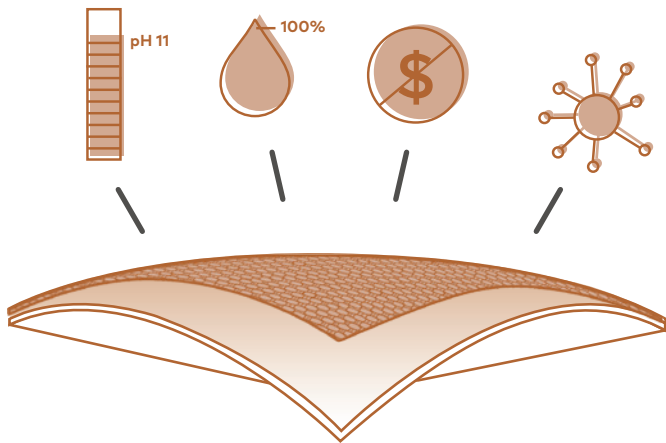


**INSTALL ON  
FLOORS UP TO**

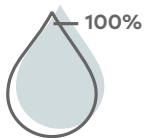
**100%**

**RH\***

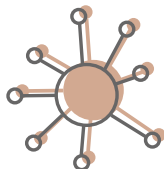
\*When using PreFix pre-applied  
releasable adhesive backing



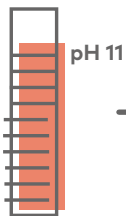
kinetex®



**CAN INSTALL ON FLOOR  
WITH UP TO 100% RH\***



**PREVENTS AGAINST  
MICROBIAL GROWTH**



**CAN INSTALL ON FLOOR  
UP TO 11 PH**



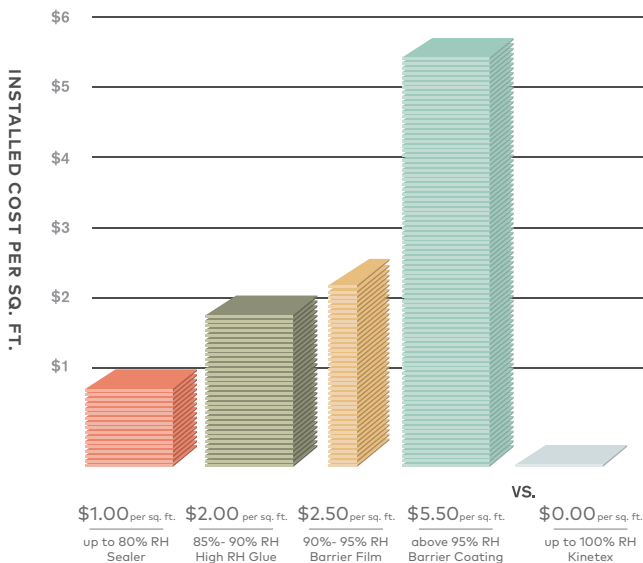
**NO MOISTURE  
MITIGATION NEEDED**

# WHAT IS KINETEX?

Kinetex® is an advanced textile composite flooring that combines key attributes of soft-surface floor covering with the long-wearing performance characteristics of hard-surface flooring.

Kinetex textile composite flooring will perform in elevated RH slabs up to 100% when using PreFix Pre-Applied Releasable Adhesive. The breathable nature of this product allows moisture to pass through the backing rather than trap it underneath. This method of vapor transmission allows Kinetex to be installed without costly moisture mitigation.

## AVERAGE COST OF MOISTURE MITIGATION for flooring



**Tired of incomprehensible  
fine print warranties? Check  
out our straight-forward  
lifetime warranty.**

Visit [efcontractflooring.com](http://efcontractflooring.com)



 **EF Contract**<sup>™</sup>  
A DIVISION OF ENGINEERED FLOORS

**kinetex**<sup>®</sup>

[EFCONTRACTFLOORING.COM](http://EFCONTRACTFLOORING.COM)