

Intrigue

Kinetex

 EF Contract®



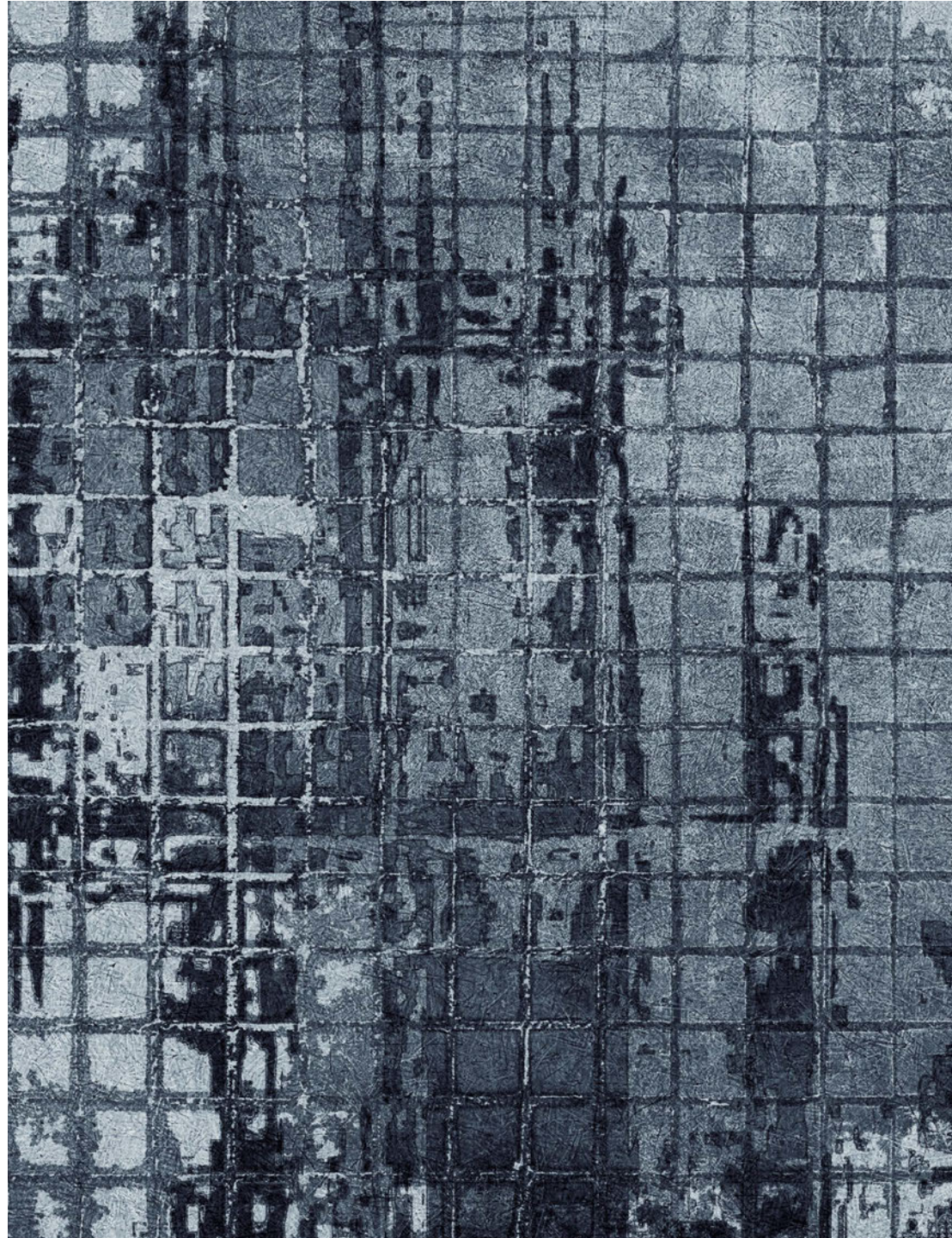
Intrigue

We're EF Contract.

Part of the fastest-growing, most progressive family of flooring companies, we stand for confidence in quality, relentless service, and doing right by all. Our products are inspired by you: offering the carpet, hard-surface, and Kinetex® textile composite flooring that you want and need, that you've been seeking but unable to find, until now.

Every collection, pattern and colorway is created with best in class performance and in pursuit of design that is simply beautiful.

Kinetex® is a new breed of commercial soft surface flooring, but with the **long-wearing performance** and **easy cleanability** of a hard surface. Beautiful and functional, with a smaller environmental footprint than most flooring. Perfect for **retail, healthcare, education,** and **corporate locations**—now with the patterns and colorways you want for commercial environments.



Intrigue

Boldly visceral. Burst of vibrant color over a muted grid of distress crosshatching: presents as modern with a retro flair, for one-of-a-kind spaces. Mix-and-match with their neutral counterparts to create dynamic interiors, implement workplace redesign, navigate traffic flow, and designate gathering spaces. The palette of 13 dynamic colorways is designed to coordinate with our other EF Contract patterns.



INTRIGUE - FASCINATE AND ATTRACT



INTRIGUE - ENCHANT AND TRANSFIX



INTRIGUE - TANTALIZE



INTRIGUE - ENRAPTURE

INTRIGUE



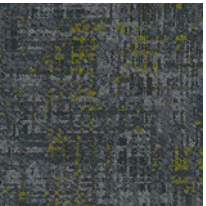
INTRIGUE | ITR12
ENRAPTURE



INTRIGUE | ITR15
FASCINATE



INTRIGUE | ITR17
CHARM



INTRIGUE | ITR25
CAPTIVATE



INTRIGUE | ITR35
ALLURE



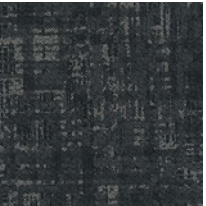
INTRIGUE | ITR45
MESMERIZE



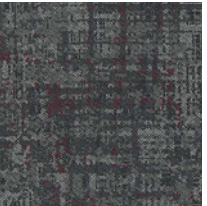
INTRIGUE | ITR47
ATTRACT



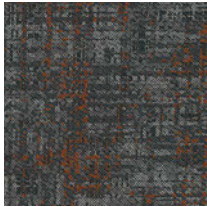
INTRIGUE | ITR55
TRANSFIX



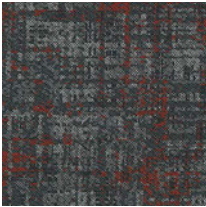
INTRIGUE | ITR58
ENCHANT



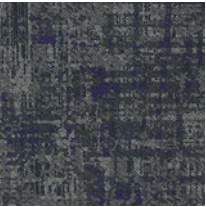
INTRIGUE | ITR65
DAZZLE



INTRIGUE | ITR75
ENTHRALL



INTRIGUE | ITR85
TANTALIZE



INTRIGUE | ITR95
TEMPT

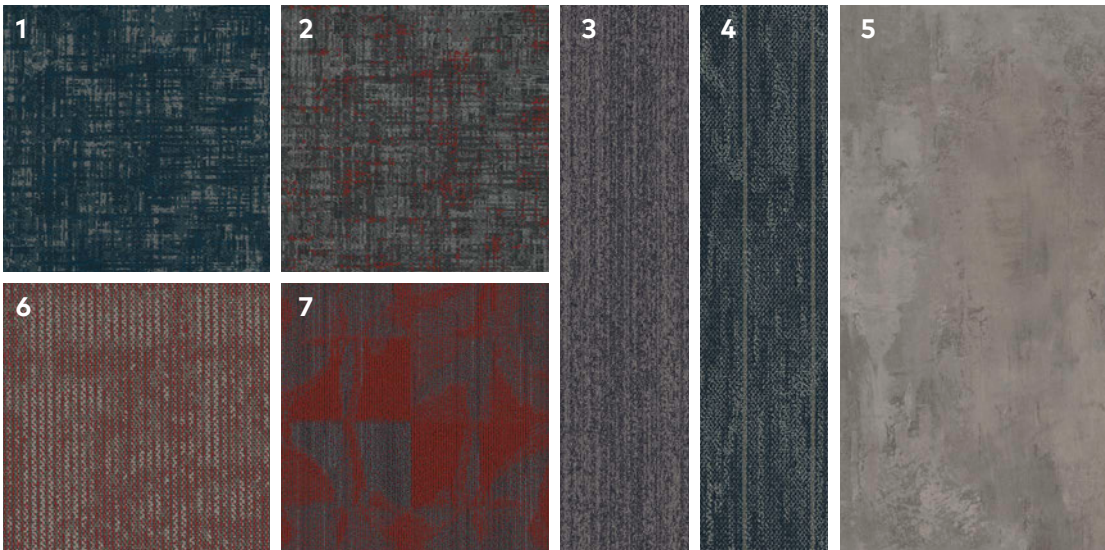
SCAN ME!



Scan to order
samples or
check inventory.

STYLE	INTRIGUE KITR
WEAR LAYER	POLYESTER - APPLIED PATTERN
BACKING	POLYESTER FELT CUSHION
TOTAL WEIGHT (NOMINAL AVERAGE)	4.5 OZ - 5.2 OZ / SQUARE FOOT
TOTAL THICKNESS (NOMINAL AVERAGE)	0.205 IN
DIMENSIONS	24" W X 24" L MODULES

COORDINATING PALETTES



Beyond the beauty of individual products, EF Contract’s flooring **coordinate effortlessly** with each other. This offering enables you to blend a range of designs to create **palettes** that meet the demands of each unique space.

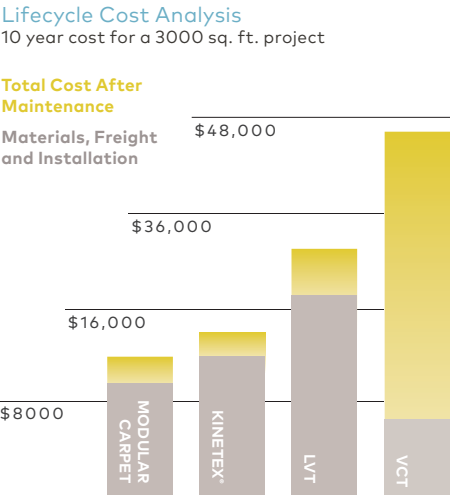
1	INTRIGUE - ATTRACT	ITR47	KINETEX
2	INTRIGUE - TANTALIZE	ITR85	KINETEX
3	COMMON THREAD - INDIGO SPIRIT	CMT49	MODULAR & BROADLOOM
4	VEIL - OBSCURE	VLT49	MODULAR
5	STAINED CONCRETE - LIMESTONE	EFCSC 002	LVT
6	TERRAIN PARK - CRIMSON	TER84	MODULAR
7	CREASE - WRAPPING PAPER	CRE68	MODULAR



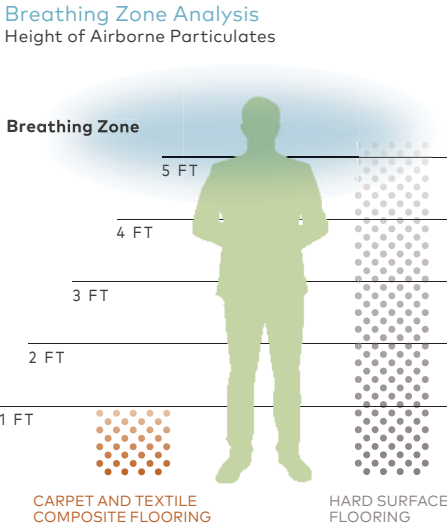
1 Durability Kinetex delivers enduring performance, year after year. One of the most thoroughly tested flooring products on the market, it has outstanding dimensional stability and unparalleled crush resistance.



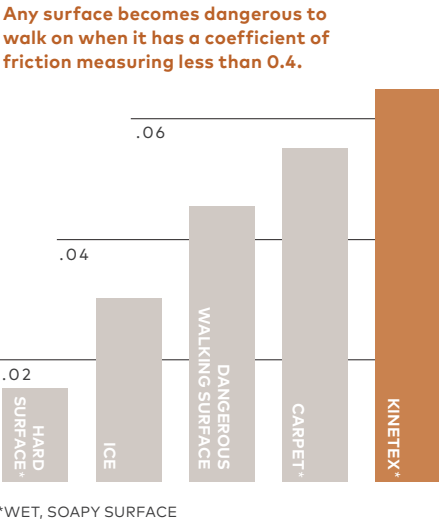
2 Maintenance Tough to wear out, easy to maintain. With vacuuming and encapsulation cleaning, Kinetex looks like new, year after year. Thanks to a lightweight face construction, Kinetex retains less water than carpet and dries faster. It is easily sanitized and resists the most challenging staining agents.



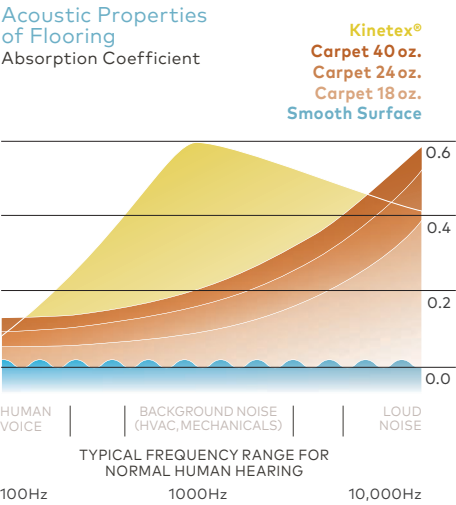
3 Health Kinetex minimizes air particulates that trigger allergies and cause infection. It easily surpasses California's 01350 requirements—the most popular U.S. standard for evaluating and restricting VOC emissions indoors.



4 Safety Kinetex is the only wall-to-wall textile floor covering certified as High-Traction by the National Floor Safety Institute. Its innovative construction creates one of the most slip-resistant flooring surfaces ever tested – wet or dry – to prevent falls before they happen.



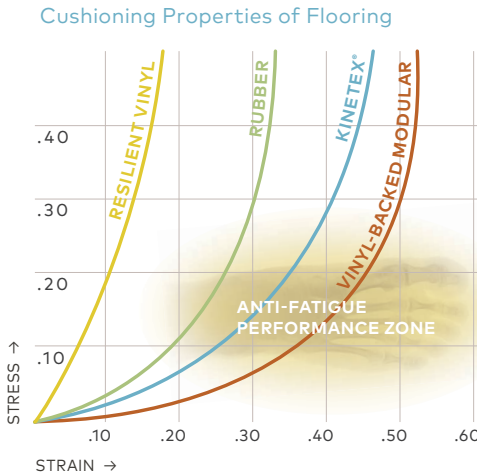
5 Acoustics Kinetex delivers unparalleled acoustic performance, with one of the highest Noise Reduction Coefficients (NRC) and Impact Insulation Classifications (IIC) ratings of any commercial flooring product. Kinetex absorbs disproportionately more background noise, greatly increasing speech intelligibility.



6 Moisture Tolerance The most common subfloor, concrete, can release excessive moisture and destroy floor covering systems—unless costly precautions are taken before installation. But moisture mitigation isn't necessary with Kinetex; its breathable nature allows moisture to pass through its backing, instead of trapping it underneath. Kinetex textile composite flooring will perform in elevated RH slabs up to 100%.

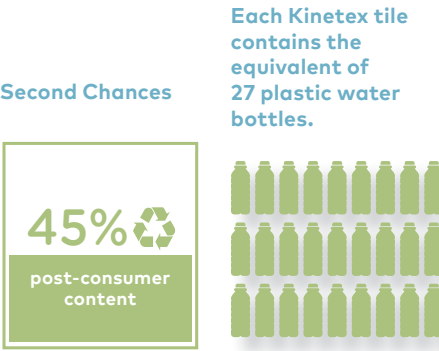
- 100% RH Tolerance**
- BREATHABLE**
No trapped moisture.
3rd party tested and verified.
- NO VAPOR BARRIER REQUIRED**
regardless if the slab is new or old,
regardless of hydrostatic pressure.
- NO MOISTURE-RELATED CLAIMS.**
Thousands of installations
worldwide since 2012.

7 Comfort Kinetex, a soft textile surface with a high-density backing, has exceptional anti-fatigue properties and minimal rolling resistance. Because it can absorb energy, Kinetex has the potential to reduce repetitive foot stress injuries and other injuries related to standing and frequent movement from place to place.



8 Sustainability Made with 45% post-consumer recycled content, each Kinetex tile contains the equivalent of 27 used water bottles. This dematerialized flooring product and its longer life mean that Kinetex has a much smaller environmental footprint than other commercial flooring options.

Furthermore, Kinetex is NSF/ANSI-140 Platinum certified (the industry-leading standard for sustainability) and has a Red List Free DECLARE label.



Kinetex Overview

Kinetex® is an advanced textile composite flooring that combines key attributes of soft-surface floor covering with the long-wearing performance characteristics of hard-surface flooring. Created as a unique floor covering alternative to hard-surface products, EF Contract's Kinetex encompasses an unprecedented range of performance attributes for retail, healthcare, education and institutional environments. In addition to its human-centered qualities and highly functional design, Kinetex offers a reduced environmental footprint compared to traditional hard-surface options.

The key to the high-performance attributes of Kinetex lies within its construction. Each layer, when used together, creates versatile, lightweight, soft-surface flooring designed with qualities parallel to that of hard-surface.

Kinetex Installation

Installing Kinetex is as easy as traditional modular carpet, however special attention should be applied until installers gain experience with module placement. Because it is such a lightweight material the modules cut very easily, reducing installation time.*

Kinetex® Adhesive

Kinetex adhesive is formulated for Kinetex textile composite flooring products and is formulated to bond the textile composite to the properly prepared substrates for the life of the installation. Products with Kinetex Adhesive will perform in elevated RH slabs up to 100%.

PreFix®

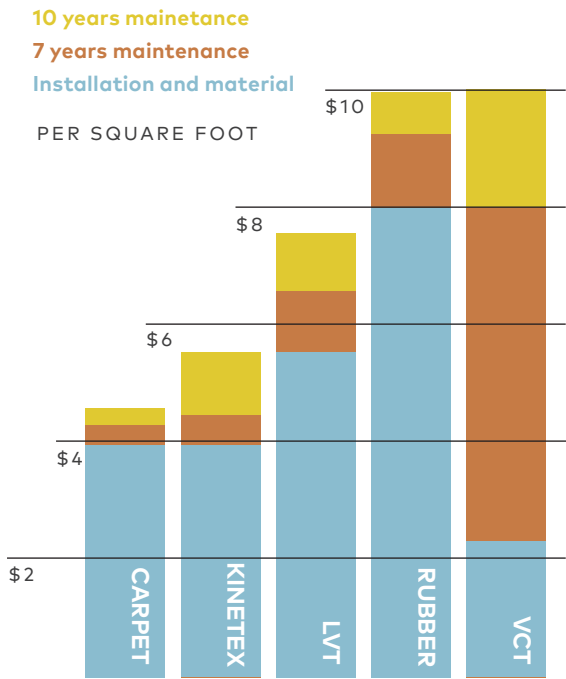
Many applied pattern Kinetex products are standard with PreFix Pre-Applied Releasable Adhesive. PreFix includes a release liner that easily peels away to reveal pre-applied adhesive that securely anchors the Kinetex module in place. Products with PreFix will perform in elevated RH slabs up to 100%, allowing the flooring to be installed without costly moisture mitigation. PreFix offers a quick installation system and it can be added to all Kinetex products as an optional adhesive.

Life Cycle Cost Comparison

Making the right choice.

When factoring the life cycle cost of flooring materials, installation and maintenance over a seven to 10-year period, both Kinetex and carpet are significantly less than hard surface options. Kinetex is approximately 33% less than LVT flooring, 51% less than rubber flooring, and 55% less than VCT flooring, offering substantial savings over the life span of the flooring installation.

*Please see the Kinetex installation instructions for full installation details.

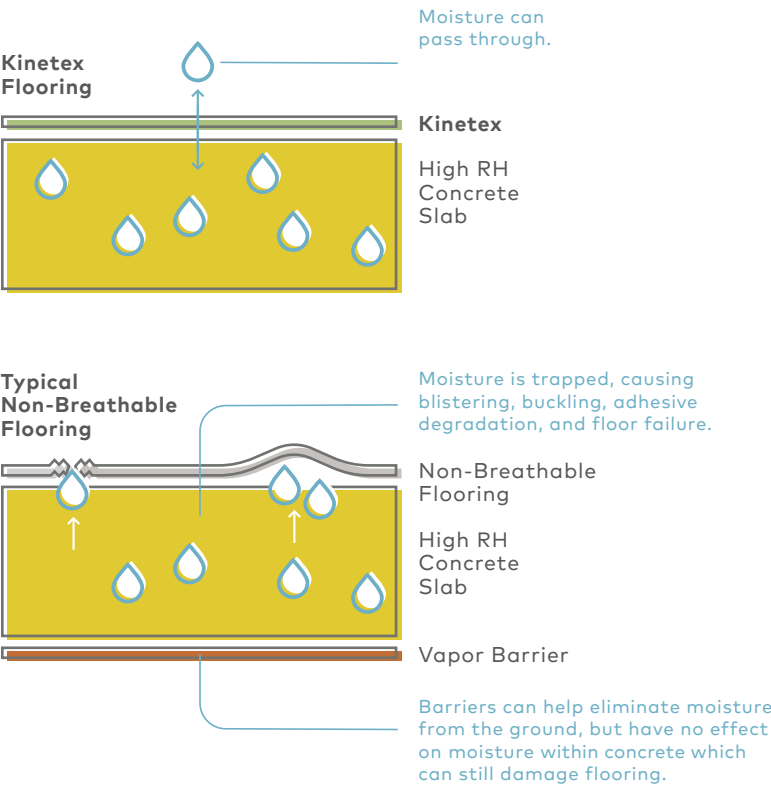


Find our online Life Cycle Cost Analysis tool at <http://floorlifecost.com/Calc/index.php>.

Kinetex installs in challenging conditions. The most common subfloor, concrete, can release excessive moisture and destroy floor covering systems—unless costly precautions are taken before installation. But moisture mitigation isn't necessary with Kinetex; its breathable nature allows moisture to pass through its backing, instead of trapping it underneath. Kinetex textile composite flooring will perform in elevated RH slabs up to 100%.

Walk Safely. Kinetex's unique construction creates one of the most slip-resistant flooring surfaces ever tested, wet or dry. It is the only wall-to-wall floor covering certified as a high-traction surface by the National Floor Safety Institute.

Installation. Kinetex is a lightweight material and easy to cut, so installation time is reduced. And, choosing PreFix, pre-applied releasable adhesive strips available on all Kinetex products, provides an odorless installation that eliminates the need for drying time, allowing for immediate traffic.



Where to Use Kinetex

Healthcare:
Acute care hospitals, medical office buildings, urgent care clinics, outpatient surgery centers, outpatient physical therapy/rehab centers, outpatient imaging centers, etc.

Education:
Early childhood development centers, preschool, K-12, and higher education

Retail/Mercantile:
Wholesale/retail merchants

Hospitality:
Hotels, restaurants

Commercial Offices:
Offices, call centers

Transportation/Public Venues:
Airports, bus/train stations, performing arts centers, athletic arenas, and conference centers

PRODUCT DETAILS

Warranties

We stand behind every aspect of Kinetex and extend certain lifetime warranties. Each warranty is covered for the useful life of the product, provided that installation and maintenance is in accordance with EF Contract's Kinetex Installation Instructions.

WEAR LAYER WARRANTIES

- Lifetime Product Performance
- Lifetime Colorfastness to Light & Crocking
- Lifetime Stain Removal
- Lifetime Static Protection

BACKING WARRANTIES

- Lifetime Protection from Edge Ravel
- Lifetime Protection from Delamination Failure
- Lifetime Dimensional Stability

	Warranty: Installed with Kinetex adhesive or PreFix	Warranty: Installed with any other adhesive	Max RH. pH
Kinetex	Lifetime	Not covered	100% RH, pH 11

©2019 Engineered Floors LLC - This unique design is protected under the U.S. Copyright Act of 1976. Any unauthorized copying or duplication of this design constitutes copyright infringement in violation of federal law.

Due to the unique visual characteristics of modular carpets, pattern repeats and pattern run-off seams may appear more noticeable than in broadloom carpets.

Such visual characteristics do not constitute a manufacturing defect, and as such, should be considered when selecting modular carpet and its installation. These photographs are representations of the installation for this modular product. Your modular installation may look different than these photos depending upon individual tile placement, lighting and overall space layout, including furnishings. Final tile placement and the resulting visual is thus the customer's, and not EF Contract's, responsibility.

To learn more, visit:

EFCONTRACTFLOORING.COM

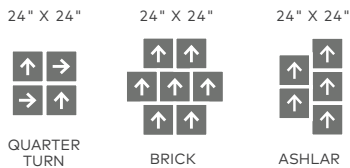


*NRC rating is a measure of the effectiveness of a material in absorbing sound. The higher the NRC rating, the greater the ability of the flooring product to absorb airborne noise. Independent laboratory testing of Kinetex has shown an average NRC rating of 0.30 (bare concrete flooring will typically provide a NRC Rating of 0.015).

**IIC is a rating of the insulation from impact noise. The higher the IIC rating, the greater the sound insulation. Independent laboratory testing of Kinetex has shown an average IIC Rating of .64 (bare concrete flooring will typically provide an IIC Rating of 34) NOTE: Test results and testing laboratory will vary, and the above information is not guaranteed.

STYLE	INTRIGUE KITR
WEAR LAYER	POLYESTER - APPLIED PATTERN
BACKING	POLYESTER FELT CUSHION
TOTAL WEIGHT (NOMINAL AVERAGE)	4.5 OZ – 5.2 OZ / SQUARE FOOT
TOTAL THICKNESS (NOMINAL AVERAGE)	0.205 IN
DIMENSIONS	24" W X 24" L
PACKAGING	18 MODULES PER BOX, 72 SQUARE FEET
RECYCLED CONTENT	45% POST-CONSUMER
LEED SCORECARD	IEQ 4.1 AND IEQ 4.3
NSF/ANSI 140 CERTIFICATION	PLATINUM
FLOORING RADIANT PANEL	CLASS 1
SMOKE DENSITY	LESS THAN 450 (FLAMING & NON-FLAMING)
ELECTROSTATIC PROPENSITY	LESS THAN 3.0 KV
COLORFASTNESS TO LIGHT	RATING OF 4.0 OR GREATER
COLORFASTNESS TO CROCKING	RATING OF 4.0 OR GREATER
WATER REPELLENCY	RATING OF 4.0 OR GREATER
APPEARANCE RETENTION	4.5 OR GREATER
SLIP RESISTANCE	COMPLIES WITH ADA GUIDELINES FOR LEVEL SURFACE NFSI CERTIFIED HIGH-TRACTION
THERMAL INSULATION	R-4
NOISE REDUCTION COEFFICIENT	NRC RATING: 0.30*
IMPACT INSULATION CLASSIFICATION	IIC RATING: 64**
STAIN RESISTANCE	RESISTS MOST CHALLENGING STAINS
BLEACH RESISTANCE	RATING OF 4.0 OR GREATER (5% CHLORINE BLEACH /95% WATER)
INDOOR AIR QUALITY CERTIFICATION	CRI GREEN LABEL PLUS™
ADHESIVES	KINETEX ADHESIVE (FULL-SPREAD PRESSURE-SENSITIVE) (OPTIONAL) PREFIX® PRE-APPLIED RELEASABLE ADHESIVE

RECOMMENDED
INSTALLATION
METHODS





1502 Coronet Drive
Dalton, Georgia 30720
U.S.A.

800.451.1250
efcontractflooring.com