

# Immerse

Rolls | Modular Carpet

 EF Contract®





### **We're EF Contract.**

Part of the fastest-growing, most progressive family of flooring companies, we stand for confidence in quality, relentless service and doing right by all.

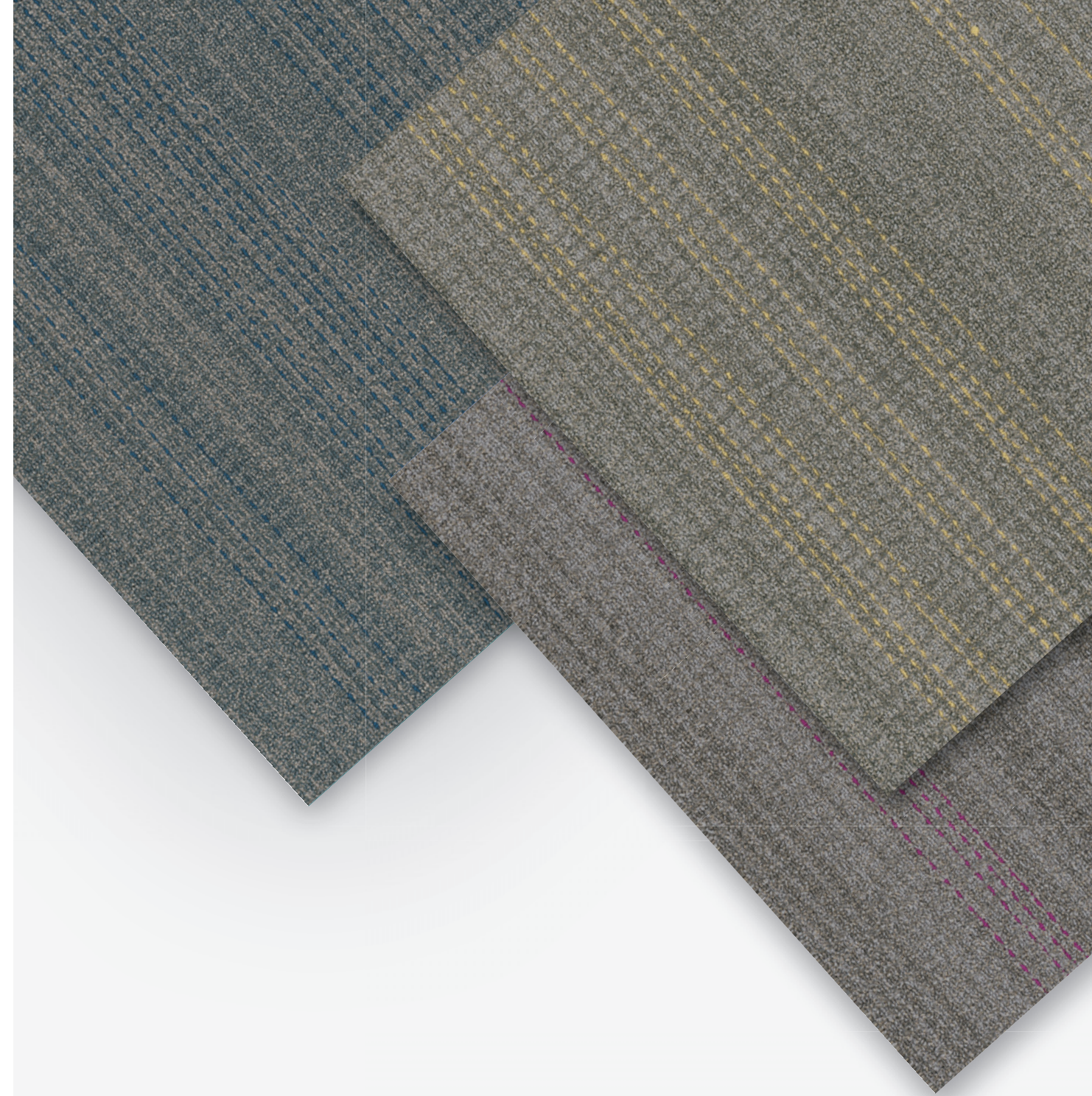
Our products are inspired by you: offering the carpet and hard-surface flooring that you want and need, that you've been seeking but unable to find, until now.

Every collection, pattern and colorway are created with best in class performance and in pursuit of design that is simply beautiful.

---

Our carpet has transformed the flooring industry with its durability, ease of maintenance and design flexibility. We have 12-foot-wide broadloom carpet and wide-ranging modular formats including squares, planks and skinny planks — as well as patterns and colorways that enable a custom look to every floor. Install coordinating products or even multiple colors of a single design to create variety within your space.

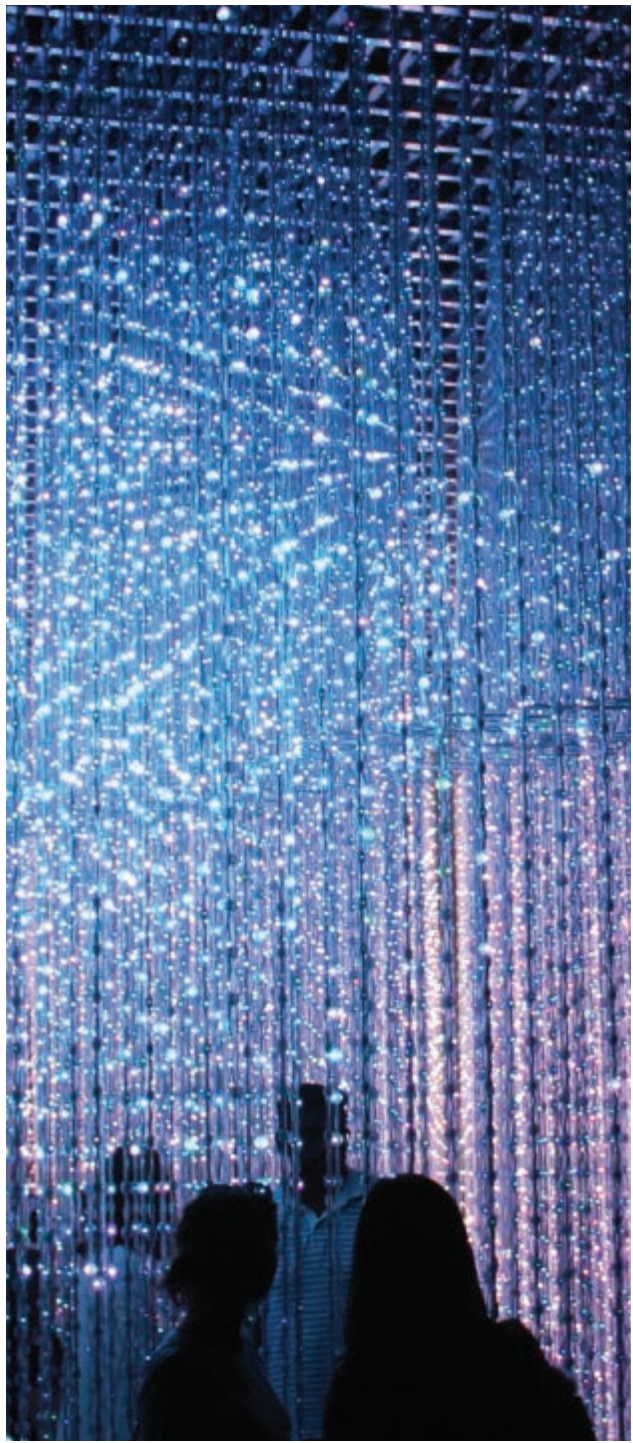




## Immerse

Banded together, texture and color drape the landscape creating beauty experienced within. An interactive pattern that engages with its surroundings, Immerse may thrive alone or join Spilled Ink to express both the subtle and bold aesthetics of any space. A tip-sheared product, Immerse is available in 24"x24" tiles and broadloom.













IMMERSE - CANARY

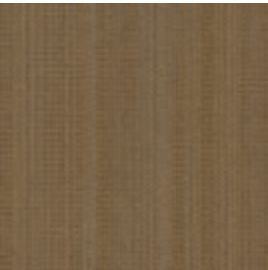




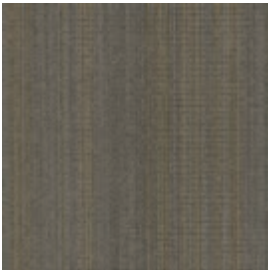
IMMERSE



IMMERSE | IMM13  
DRIFTWOOD



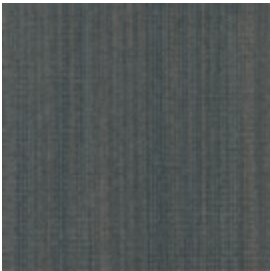
IMMERSE | IMM23  
OCHRE



IMMERSE | IMM24  
CANARY



IMMERSE | IMM26  
SEPIA



IMMERSE | IMM44  
LUMINOL



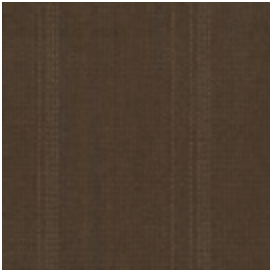
IMMERSE | IMM45  
SQUID



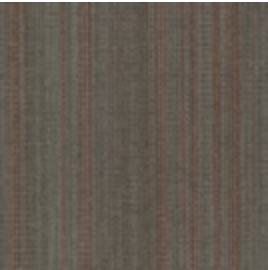
IMMERSE | IMM53  
QUARRY



IMMERSE | IMM54  
CHARRED



IMMERSE | IMM77  
ROOTED



IMMERSE | IMM84  
MATADOR



IMMERSE | IMM94  
CONCORD

Style	IMMERSE   TIMM	IMMERSE   IMM
Construction	TIP-SHEARED SCROLL	TIP-SHEARED SCROLL
Fiber Type	100% ENCORE® SD ULTIMA® NYLON (with recycled content)	100% ENCORE® SD ULTIMA® NYLON (with recycled content)
Dye Method	SOLUTION DYED	SOLUTION DYED
Ounce Weight	24 OZ / YD2	24 OZ / YD2
Gauge	1/10 IN	1/10 IN
Backing	NEXUS® MODULAR	PREMIERBAC® PLUS
Density	5,838	6,803
Size	24" X 24" MODULES	12' ROLL



PRODUCT DETAILS

Fiber

100% ENCORE® SD ULTIMA® (WITH RECYCLED CONTENT)  
Encore SD Ultima is specifically engineered to maximize appearance retention with exceptional color, performance, sustainability and practicality.

Moisture

Are high levels of moisture in your concrete slab causing issues with your project’s floor covering? We can help.

- Nexus Modular Carpet with TileTabs - 99% RH
- Cost-efficient
- Long-term performance
- Straightforward, easy-to-understand Lifetime warranty
- Requires no special floor preparation

RH/pH Warranty

Warranty: Installed With TileTabs	Lifetime
Warranty: Installed With Commercialon® Premium Adhesive (non-prorated)	Lifetime
Warranty: Installed With Any Other Adhesive	1 year
Max RH, pH Installed Without Sealer	90% RH, pH 9
Max RH, pH Installed With Commercialon® Premium Sealer	99% RH, pH 11 (TileTabs) -- 97% RH, pH 11 (Commercialon)

Backings

NEXUS® MODULAR  
Nexus modular products can be installed in a variety of ways and are performance engineered to be visually appealing. In addition, they are designed to accommodate your long-term flooring budget.

- Contains pre-consumer recycled content and contributes to LEED
- Recyclable through EF Contract’s R4 Carpet Reclamation Program

Adhesives

COMMERCIALON® PREMIUM MODULAR ADHESIVE  
A high-strength acrylic latex-based carpet adhesive specifically formulated for bonding modular PVC-backed carpet to the floor. This premium adhesive is for use with all Nexus Modular Tile products. This adhesive is guaranteed for the life of the installation when used in accordance with the EF Contract Carpet Installation Handbook. Commercialon Premium Modular Adhesive meets the CRI Low-VOC Emission Criteria. Commercialon Premium Modular Adhesive is nontoxic, has ultra-low odor and is antimicrobial in the dry state.

COMMERCIALON® PREMIUM CARPET ADHESIVE  
Formulated for the most demanding interior carpet installations. It forms a powerful bond with stiff and heavy backed commercial carpets directly over approved substrates. It is quick setting, features antimicrobial protection and can be removed easily. This solvent free adhesive is also low in odor, meeting the low VOC emission criteria of the CRI Green Label Plus Indoor Air Quality. Commercialon Premium Adhesive is for use with broadloom backing systems.

Optional

TILETABS®  
High Tack Adhesive Tabs (modular only)

Technologies

PROTEX® SOIL RELEASE  
ProTex is a proprietary soil release technology that is applied and bonded to the pile fiber to impede soiling and to improve cleanability. It is standard on all EF Contract flooring products.

Optional

PROSEPT® ANTIMICROBIAL  
SENTIR® ADVANCED ODOR-BLOCKING TECHNOLOGY

REDUCE  
REUSE  
RECYCLE  
RETURN

R4

CRI  
GREEN LABEL  
+PLUS  
Meets All Quality  
Carpet Testing Program  
requirements

Can be installed Glue-Free  
with

TileTabs®

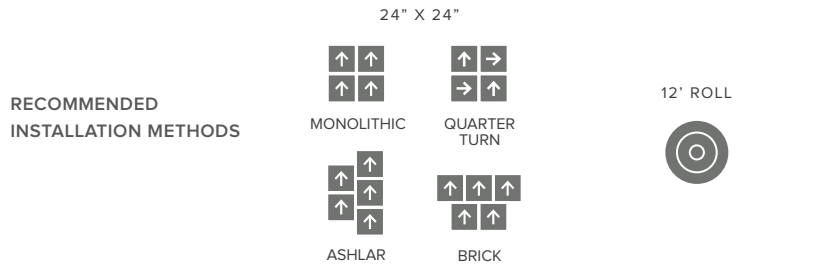
Nexus® Tile Connectors

©2019 Engineered Floors LLC - This unique design is protected under the U.S. Copyright Act of 1976. Any unauthorized copying or duplication of this design constitutes copyright infringement in violation of federal law.

Due to the unique visual characteristics of modular carpets, pattern repeats and pattern run-off seams may appear more noticeable than in broadloom carpets. Such visual characteristics do not constitute a manufacturing defect, and as such, should be considered when selecting modular carpet and its installation. These photographs are representations of the installation for this modular product. Your modular installation may look different than these photos depending upon individual tile placement, lighting and overall space layout, including furnishings. Final tile placement and the resulting visual is thus the customer's, and not EF Contract's, responsibility.

To learn more, visit:  
EFCONTRACTFLOORING.COM

STYLE	IMMERSE   TIMM	IMMERSE   IMM
CONSTRUCTION	TIP-SHEARED SCROLL	TIP-SHEARED SCROLL
FIBER TYPE	100% ENCORE® SD ULTIMA® NYLON (with recycled content)	100% ENCORE® SD ULTIMA® NYLON (with recycled content)
DYE METHOD	SOLUTION DYED	SOLUTION DYED
OUNCE WEIGHT	24 OZ	24 OZ
GAUGE	1/10 IN	1/10 IN
BACKING	NEXUS® MODULAR	PREMIERBAC® PLUS
SIZE	24" X 24" MODULES	12' ROLL
FINISHED PILE THICKNESS	.148 INCHES	.127 INCHES
DENSITY	5,838	6,803
SPECIAL TECHNOLOGY	PROTEX® SOIL RELEASE	PROTEX® SOIL RELEASE
OPTIONAL SPECIAL TECHNOLOGIES	PROSEPT® ANTIMICROBIAL SENTIR® ADVANCED ODOR BLOCKING TREATMENT	PROSEPT® ANTIMICROBIAL SENTIR® ADVANCED ODOR BLOCKING TREATMENT
PHYSICAL TESTING	FLOORING RADIANT PANEL – (CLASS 1) PILL TEST – (PASSES) SMOKE DENSITY – (LESS THAN 450 FLAMING) STATIC GENERATION – (LESS THAN 3.5 KV)	FLOORING RADIANT PANEL – (CLASS 1) PILL TEST – (PASSES) SMOKE DENSITY – (LESS THAN 450 FLAMING) STATIC GENERATION – (LESS THAN 3.5 KV)
WARRANTIES	LIFETIME FIBER PERFORMANCE FOR WEAR LIFETIME FIBER PERFORMANCE FOR STATIC LIFETIME STAIN REMOVAL LIFETIME COLORFASTNESS TO LIGHT AND ATMOSPHERIC CONTAMINANTS LIFETIME FOR TUFT BIND STRENGTH (EDGE RAVEL, YARN PULLS, ZIPPERING) LIFETIME AGAINST DELAMINATION LIFETIME DIMENSIONAL STABILITY	LIFETIME FIBER PERFORMANCE FOR WEAR LIFETIME FIBER PERFORMANCE FOR STATIC LIFETIME STAIN REMOVAL LIFETIME COLORFASTNESS TO LIGHT AND ATMOSPHERIC CONTAMINANTS 10 YEAR FOR TUFT BIND STRENGTH (EDGE RAVEL, YARN PULLS, ZIPPERING) 10 YEAR AGAINST DELAMINATION







1502 Coronet Drive  
Dalton, Georgia 30720  
U.S.A.

800.451.1250  
[efcontractflooring.com](http://efcontractflooring.com)