

High Society Collection

Socialite
Romantic
Musical

MODULAR CARPET





High Society

Imagine an escape to the glamorous world of Monte Carlo, where luxury knows no bounds. This was the inspiration for the design of our latest modular carpet collection, High Society. From the excitement in the toss of the dice in lavish, opulent casinos, to the serene contrast of the Mediterranean's coastal splendor, High Society celebrates the interplay of the grand style and elegance of Monte Carlo with the airy lightness of the French Riviera coastline. The High Society Collection is made up of three styles.

Musical, a choreography of fluid and harmonic spatters of color over dusky backgrounds. **Romantic**, designed with deeper splashes of tonal color that flicker across the pattern, creating a beautiful scattered mosaic motif. **Socialite** causes a stir with bursts of dramatic splashes of deep, neutral shades that flow and flutter across the pattern. Each style is available in 24" x 24" tiles, in 12 rich colorways.









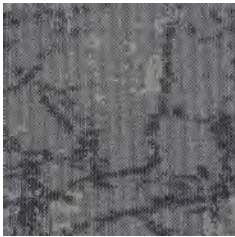






24" x 24" MODULAR

SOCIALITE



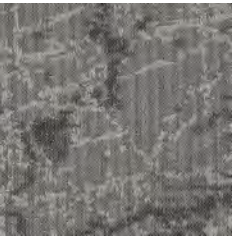
SOC40
ARMSTRONG



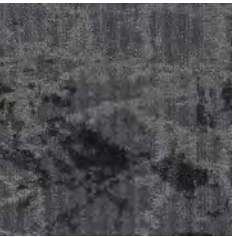
SOC47
ENGAGEMENT



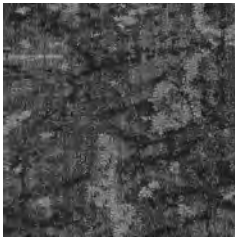
SOC48
LOVE



SOC50
SENSE



SOC56
PLAY



SOC59
FILM



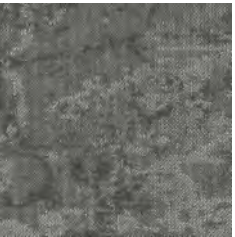
SOC24
PORTER



SOC28
NEWPORT



SOC45
GILDED



SOC53
GRACE



SOC15
KELLY



SOC77
OPEN

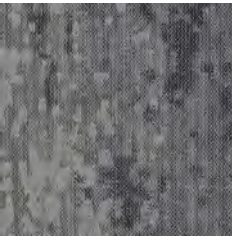
SCAN ME!



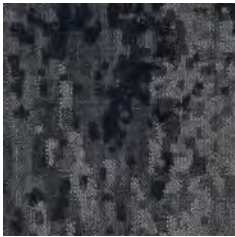
Scan to order
samples or
check inventory.

24" x 24" MODULAR

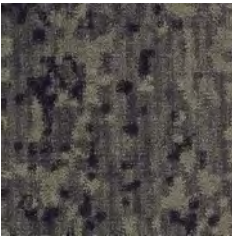
ROMANTIC



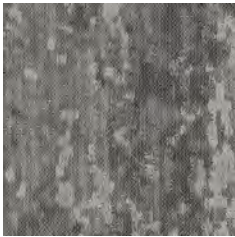
ROM40
ARMSTRONG



ROM47
ENGAGEMENT



ROM48
LOVE



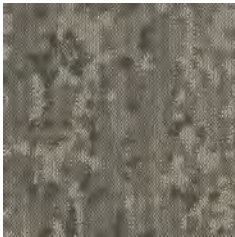
ROM50
SENSE



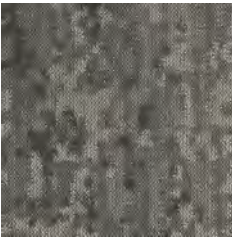
ROM56
PLAY



ROM59
FILM



ROM24
PORTER



ROM28
NEWPORT



ROM45
GILDED



ROM53
GRACE



ROM15
KELLY



ROM77
OPEN

SCAN ME!



Scan to order
samples or
check inventory.



ROMANTIC - GILDED - BRICK

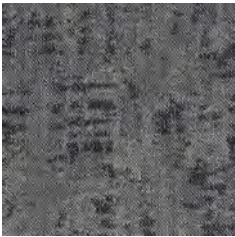


24" x 24" MODULAR

MUSICAL



MUS40
ARMSTRONG



MUS47
ENGAGEMENT



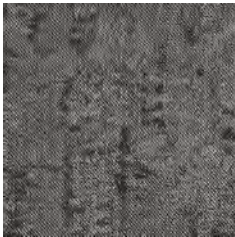
MUS48
LOVE



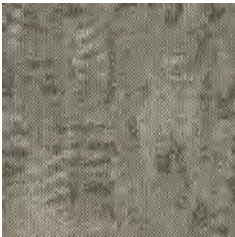
MUS50
SENSE



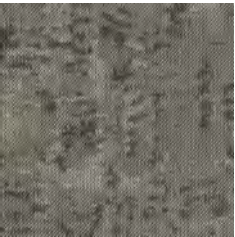
MUS56
PLAY



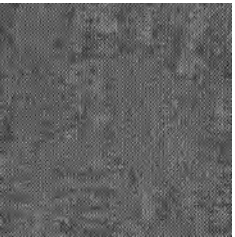
MUS59
FILM



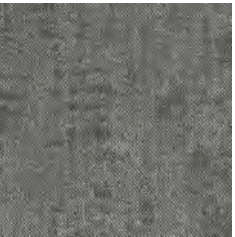
MUS24
PORTER



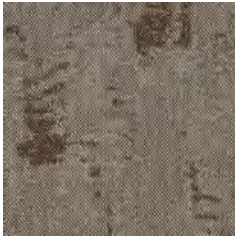
MUS28
NEWPORT



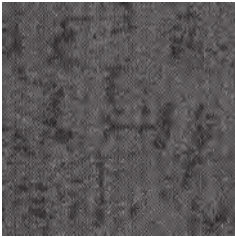
MUS45
GILDED



MUS53
GRACE



MUS15
KELLY



MUS77
OPEN

SCAN ME!



Scan to order
samples or
check inventory.



COORDINATING PALETTE

Beyond the beauty of individual products, EF Contract's flooring **coordinate effortlessly** across all of our product platforms - modular carpet tile, broadloom, LVT and Kinetex textile composite flooring. This offering enables you to blend a range of designs to create **palettes** that meet the demands of each unique space.

1	SIMPLE WEAVE - SILVER WARP	SPW53	MODULAR + BROADLOOM
2	WOODLANDS II - SILVER ASH	009	LVT
3	SOCIALITE - SENSE	SOC50	MODULAR
4	PENNANT - CINDER	PEN53	MODULAR
5	ROMANTIC - SENSE	ROM50	MODULAR
6	INTRIGUE - TRANSFIX	ITR55	KINETEX
7	SIGNET - ASH	SIG52	MODULAR
8	WOODLANDS II - MOCHA	010	LVT
9	REMIX - SILVER GREY	RMX54	BROADLOOM
10	KIMONO - SILK	KMO51	MODULAR



COORDINATING PALETTE

Beyond the beauty of individual products, EF Contract's flooring **coordinate effortlessly** across all of our product platforms - modular carpet tile, broadloom, LVT and Kinetex textile composite flooring. This offering enables you to blend a range of designs to create **palettes** that meet the demands of each unique space.

1	KASURI - SOOT	KAS58	MODULAR
2	SHUFFLE - SILVER GREY	SHU54	BROADLOOM
3	MELANGE - ANDIRON	007	LVT
4	MUSICAL - PLAY	MUS56	MODULAR
5	PENNANT - CINDER	PEN53	MODULAR
6	SOCIALITE - PLAY	SOC56	MODULAR
7	IMPRINT - RAVEN	IMP56	KINETEX
8	WATERCOLORS - SOOT BLACK	WTC59	MODULAR
9	MELANGE - FOGGY BEACH	005	LVT
10	INTERCHANGEABLE - STANDARDIZED	INT58	MODULAR

PRODUCT DETAILS

Fiber

100% ENCORE® SD ULTIMA® NYLON
(WITH RECYCLED CONTENT)

Encore SD Ultima is specifically engineered to maximize appearance retention with exceptional color, performance, sustainability and practicality.

FIBER OPTION

ENCORE® 100
The high recycled content incorporated into Encore 100 nylon provides a reduced environmental impact without compromising quality or color clarity.

- 100% post-industrial (pre-consumer) recycled content
- Full inclusion into the EF Contract’s Flooring Reclamation Program
- Lifetime warranty for stain removal, colorfastness, wear and static
- See sales rep for for availability and price

Standard Backing

NEXUS® MODULAR
Nexus modular products can be installed in a variety of ways and are performance engineered to be visually appealing. In addition, they are designed to accommodate your long-term flooring budget.

- Contains pre-consumer recycled content and contributes to LEED
- Recyclable through EF Contract’s Flooring Reclamation Program

OPTIONAL BACKING

ADVANCE MODULAR CARPET BACKING™
is engineered to provide outstanding performance, protection and stability that is required of modular carpet systems.

- PVC-Free
- Contains recycled content and contributes to LEED
- Eligible for landfill diversion through the EF Contract’s Flooring Reclamation Program

Moisture

Are high levels of moisture in your concrete slab causing issues with your project’s floor covering? We can help.

- Nexus Modular Carpet with TileTabs - 99% RH
- Cost-efficient
- Long-term performance
- Straightforward, easy-to-understand Lifetime warranty
- Requires no special floor preparation

©2024 Engineered Floors LLC - This unique design is protected under the U.S. Copyright Act of 1976. Any unauthorized copying or duplication of this design constitutes copyright infringement in violation of federal law.

Due to the unique visual characteristics of modular carpets, pattern repeats and pattern run-off seams may appear more noticeable than in broadloom carpets. Such visual characteristics do not constitute a manufacturing defect, and as such, should be considered when selecting modular carpet and its installation. These photographs are representations of the installation for this modular product. Your modular installation may look different than these photos depending upon individual tile placement, lighting and overall space layout, including furnishings. Final tile placement and the resulting visual is thus the customer’s, and not EF Contract’s, responsibility.

To learn more, visit: EFCONTRACT.COM

Adhesives

COMMERCIALON® PREMIUM MODULAR ADHESIVE
A high-strength acrylic latex-based carpet adhesive specifically formulated for bonding modular PVC backed carpet to the floor. This premium adhesive is for use with all Nexus Modular Tile products. This adhesive is guaranteed for the life of the installation when used in accordance with the EF Contract Carpet Installation Handbook. Commercialon Premium Modular Adhesive meets the CRI Low-VOC Emission Criteria. Commercialon Premium Modular Adhesive is nontoxic, has ultra-low odor and is antimicrobial in the dry state.

Optional

TILETABS
High Tack Adhesive Tabs (modular only)

Technologies

PROTEX® SOIL RELEASE
ProTex is a proprietary soil release technology that is applied and bonded to the pile fiber to impede soiling and to improve cleanability. It is standard on all EF Contract flooring products

Optional

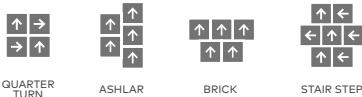
PROSEPT® ANTIMICROBIAL
SENTIR® ADVANCED ODOR-BLOCKING TECHNOLOGY

Warranty: Installed With TileTabs	Lifetime
Warranty: Installed With Commercialon® Premium Adhesive (non-prorated)	Lifetime
Warranty: Installed With Any Other Adhesive	1 year
Max RH, pH Installed Without Commercialon® Sealer	90% RH, pH 9
Max RH, pH Installed With Commercialon® Premium Sealer	99% RH, pH 11 (TileTabs) — 97% RH, pH 11 (Commercialon)

PRODUCT DETAILS

STYLE	SOCIALITE TSOC	ROMANTIC TROM	MUSICAL TMUS
CONSTRUCTION	PATTERNED LOOP	PATTERNED LOOP	PATTERNED LOOP
FIBER TYPE	100% ENCORE® SD ULTIMA NYLON	100% ENCORE® SD ULTIMA NYLON	100% ENCORE® SD ULTIMA NYLON
FIBER OPTION	ENCORE® 100	ENCORE® 100	ENCORE® 100
DYE METHOD	SOLUTION DYED	SOLUTION DYED	SOLUTION DYED
OUNCE WEIGHT	27 OZ / SQUARE YARD	27 OZ / SQUARE YARD	27 OZ / SQUARE YARD
GAUGE	1/12 IN	1/12 IN	1/12 IN
STANDARD BACKING	NEXUS® MODULAR	NEXUS® MODULAR	NEXUS® MODULAR
OPTIONAL BACKING	ADVANCE MODULAR	ADVANCE MODULAR	ADVANCE MODULAR
DENSITY	9,624	10,125	10,340
SIZE	24" X 24"	24" X 24"	24" X 24"
PATTERN REPEAT	N/A	N/A	N/A
TOTAL THICKNESS	0.247 INCHES	0.245 INCHES	0.245 INCHES
SPECIAL TECHNOLOGY	PROTEX® SOIL RELEASE	PROTEX® SOIL RELEASE	PROTEX® SOIL RELEASE
OPTIONAL SPECIAL TECHNOLOGIES	PROSEPT® ANTIMICROBIAL SENTIR® ADVANCED ODOR BLOCKING TREATMENT	PROSEPT® ANTIMICROBIAL SENTIR® ADVANCED ODOR BLOCKING TREATMENT	PROSEPT® ANTIMICROBIAL SENTIR® ADVANCED ODOR BLOCKING TREATMENT
PHYSICAL TESTING	FLOORING RADIANT PANEL – (CLASS 1)	FLOORING RADIANT PANEL – (CLASS 1)	FLOORING RADIANT PANEL – (CLASS 1)
	PILL TEST – (PASSES)	PILL TEST – (PASSES)	PILL TEST – (PASSES)
	SMOKE DENSITY – (LESS THAN 450 FLAMING)	SMOKE DENSITY – (LESS THAN 450 FLAMING)	SMOKE DENSITY – (LESS THAN 450 FLAMING)
	STATIC GENERATION – (LESS THAN 3.5 KV)	STATIC GENERATION – (LESS THAN 3.5 KV)	STATIC GENERATION – (LESS THAN 3.5 KV)
FIBER WARRANTY	LIFETIME FIBER PERFORMANCE FOR WEAR	LIFETIME FIBER PERFORMANCE FOR WEAR	LIFETIME FIBER PERFORMANCE FOR WEAR
	LIFETIME FIBER PERFORMANCE FOR STATIC	LIFETIME FIBER PERFORMANCE FOR STATIC	LIFETIME FIBER PERFORMANCE FOR STATIC
	LIFETIME STAIN REMOVAL	LIFETIME STAIN REMOVAL	LIFETIME STAIN REMOVAL
	LIFETIME COLORFASTNESS TO LIGHT AND ATMOSPHERIC CONTAMINANTS	LIFETIME COLORFASTNESS TO LIGHT AND ATMOSPHERIC CONTAMINANTS	LIFETIME COLORFASTNESS TO LIGHT AND ATMOSPHERIC CONTAMINANTS
BACKING WARRANTY	LIFETIME FOR TUFT BIND STRENGTH (EDGE RAVEL, YARN PULLS, ZIPPERING)	LIFETIME FOR TUFT BIND STRENGTH (EDGE RAVEL, YARN PULLS, ZIPPERING)	LIFETIME FOR TUFT BIND STRENGTH (EDGE RAVEL, YARN PULLS, ZIPPERING)
	LIFETIME AGAINST DELAMINATION	LIFETIME AGAINST DELAMINATION	LIFETIME AGAINST DELAMINATION
	LIFETIME DIMENSIONAL STABILITY	LIFETIME DIMENSIONAL STABILITY	LIFETIME DIMENSIONAL STABILITY

RECOMMENDED
INSTALLATION
METHODS





PO Box 2207
Dalton, Georgia 30722
U.S.A.

800.451.1250
efcontract.com
DX1724M12