

Ground Cover

Collection

Fern
Heath
Sedge
Facet

Rolls | LVT

 EF Contract®



Ground Cover Collection

We're EF Contract.

Driven by artistry, innovation, and principle, EF Contract delivers products and experiences that make commercial spaces work better. With fresh and relevant design, uncompromising quality, and relentless service, we're disrupting how the flooring industry does business. Because we innovate with materials, our designs offer a combination of style, performance, and value that is unmatched in the contract flooring market.

We work tirelessly to make doing business with us easy because we are devoted to the success of our customers.

Our carpet has transformed the flooring industry with its **durability, ease of maintenance and design flexibility**. We have 12-foot-wide broadloom carpet and wide-ranging modular formats as well as patterns and colorways that enable a **custom look to every floor**. Install coordinating products or even multiple colors of a single design to create variety within your space.



Ground Cover

Past the winding hedgerow lies a warm, inviting landscape. Gaze upon the rich, open fields as they shift to dense, fertile forests. Such is the inspiration for the beautiful earthy tones of Ground Cover. **Heath** offers a refined sisal appearance in a comfortable, residential color palette both versatile and timeless. **Sedge**, in undulating textures and nature-inspired neutrals, weaves a blended linear motif, providing a serene, harmonious backdrop. And **Fern** varies textures and pile heights in a range of tranquil, yet versatile solid hues, allowing the pattern's simple elegance to resonate in a space.



FERN - BRACKEN



FERN



FERN | FRN11
BRACKEN

FERN | FRN15
SALVINIA

FERN | FRN51
AZOLLA

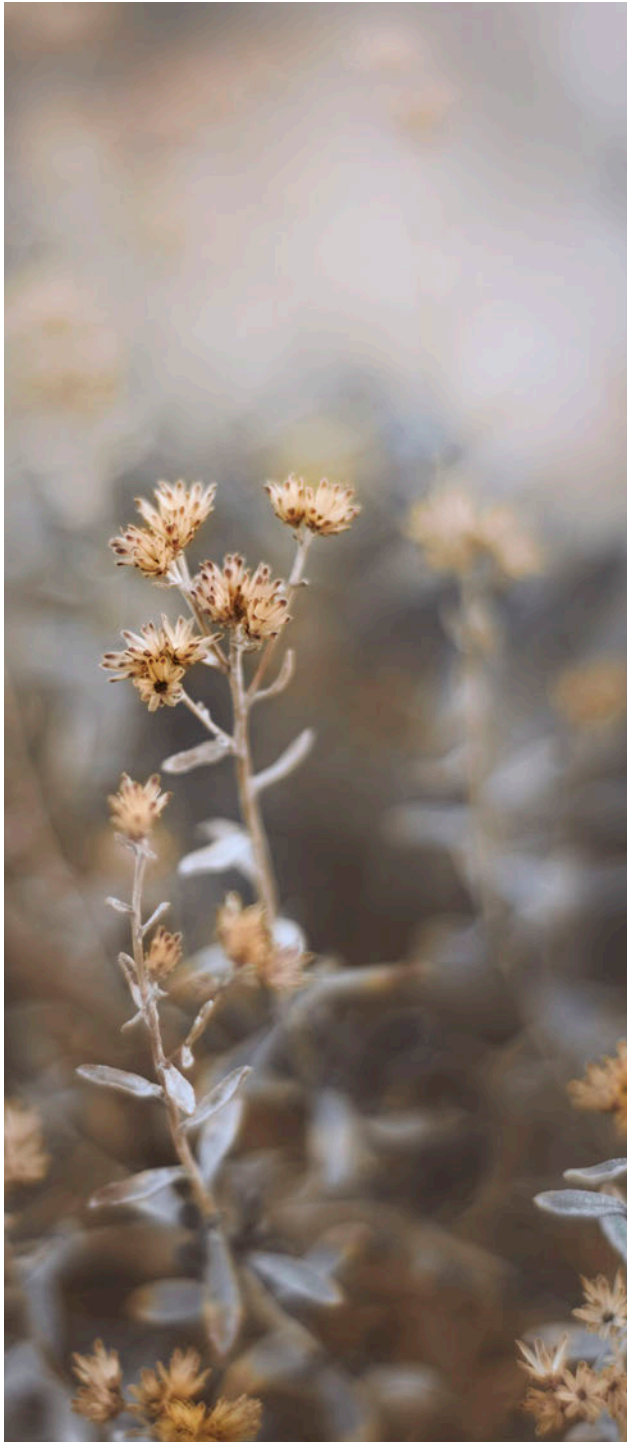
FERN | FRN55
OSMUNDA

SCAN ME!



Scan to order
samples or
check inventory.

Style	FERN FRN
Fiber Type	100% ENCORE® SD ULTIMA® NYLON (with recycled content)
Dye Method	SOLUTION DYED
Ounce Weight	22 OZ / SQUARE YARD
Gauge	1/10 IN
Backing	PREMIERBAC® PLUS
Density	12,185
Dimensions	12' ROLL

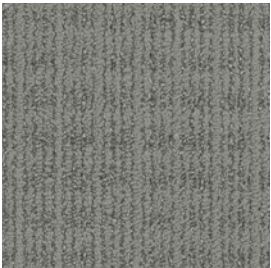




HEATH



HEATH | HTH52
SNOW-IN-SUMMER



HEATH | HTH54
ARMERIA



HEATH | HTH58
LEADPLANT



HEATH | HTH72
STRAW



HEATH | HTH74
WOODRUFF



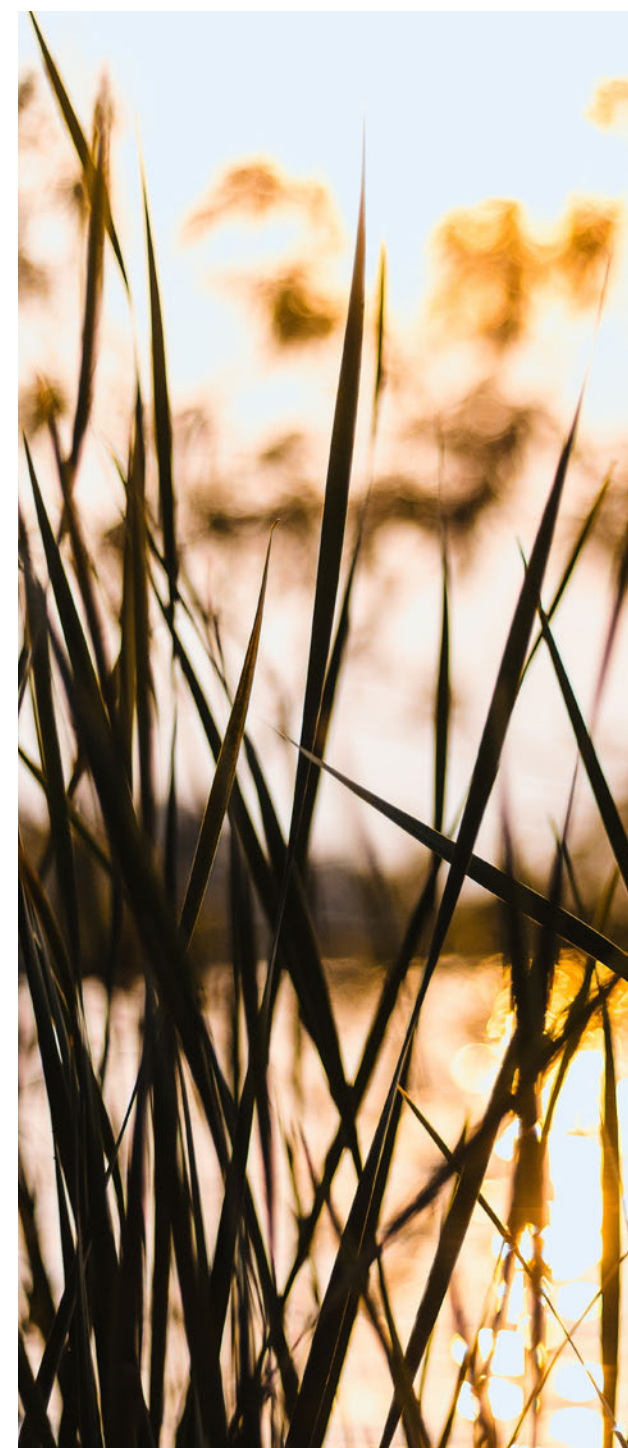
HEATH | HTH78
TARRAGON

SCAN ME!



Scan to order
samples or
check inventory.

Style	HEATH HTH
Fiber Type	100% ENCORE® SD ULTIMA® NYLON (with recycled content)
Dye Method	SOLUTION DYED
Ounce Weight	22 OZ / SQUARE YARD
Gauge	1/10 IN
Backing	PREMIERBAC® PLUS
Density	9,542
Dimensions	12' ROLL





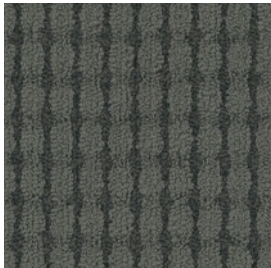
SEDGE



SEDGE | SDG52
SNOW-IN-SUMMER



SEDGE | SDG54
ARMERIA



SEDGE | SDG58
LEADPLANT



SEDGE | SDG72
STRAW



SEDGE | SDG74
WOODRUFF



SEDGE | SDG78
TARRAGON

SCAN ME!



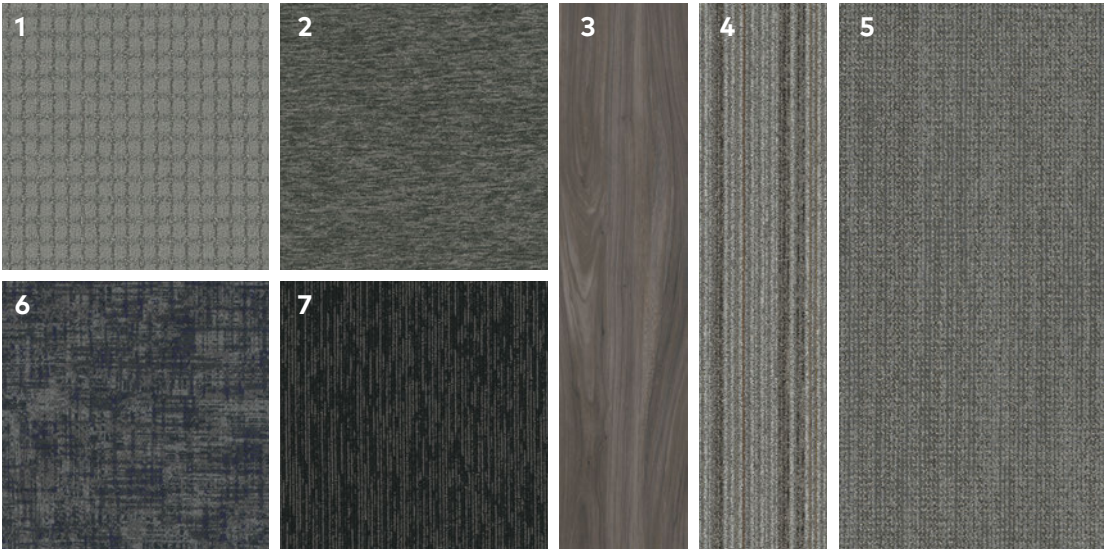
Scan to order
samples or
check inventory.

Style	SEDGE SDG
Fiber Type	100% ENCORE® SD ULTIMA® NYLON (with recycled content)
Dye Method	SOLUTION DYED
Ounce Weight	22 OZ / SQUARE YARD
Gauge	1/10 IN
Backing	PREMIERBAC® PLUS
Density	11,314
Dimensions	12' ROLL



SEDGE - SNOW-IN-SUMMER

COORDINATING PALETTES | SEDGE



Beyond the beauty of individual products, EF Contract’s flooring **coordinate effortlessly** with each other. This offering enables you to blend a range of designs to create **palettes** that meet the demands of each unique space.

1	SEDGE - AMERICA	SDG54	BROADLOOM
2	STRIDE - CAULDRON	SRD58	MODULAR
3	WOODLANDS - IRONWOOD	EFCWL001	LVT
4	LIAISON - SALT & PEPPER	LSN53	MODULAR
5	SIMPLE WEAVE - SILVER WRAP	SPW53	MODULAR
6	INTRIGUE - TEMPT	ITR95	KINETEX
7	POLARIS - NORTH STAR	PLR59	MODULAR





FACET



FACET | EFCFC001
STRAW



FACET | EFCFC002
TWIG



FACET | EFCFC006
BARKTONE



FACET | EFCFC008
SUEDE GRAY

SCAN ME!



Scan to order
samples or
check inventory.

PRODUCT DETAILS FOR CARPET

Fiber

100% ENCORE®SDULTIMA® (WITH RECYCLED CONTENT)
Encore SD is specifically engineered to maximize appearance retention with exceptional color, performance, sustainability and practicality.

Backings

PREMIERBAC® PLUS
is standard on broadloom products and provides superior construc-tion to ensure solid dimensional stability for broadloom carpets.

- » Stretch-in or glue-down installation
- » Manufactured in an ISO 14001 certified facility
- » Contains pre-consumer recycled content and contributes to LEED
- » Recyclable through the EF Contract R4 Carpet Reclamation Program

Adhesives

COMMERCIALON® PREMIUM CARPET ADHESIVE
Formulated for the most demanding interior carpet installations. It forms a powerful bond with stiff and heavy backed commercial carpets directly over approved substrates. It is quick setting, features antimicrobial protection and can be removed easily. This solvent free adhesive is also low in odor, meeting the low VOC emission criteria of the CRI Green Label Plus Indoor Air Quality. Commercialon Premium Adhesive is for use with broadloom backing systems.

Technologies

PROTEX® SOIL RELEASE
ProTex is a proprietary soil release technology that is applied and bonded to the pile fiber to impede soiling and to improve cleanability. It is standard on all EF Contract flooring products.

Optional

PROSEPT®
ProSept is a safe braod spectrum antimicrobial that protects the carpet from bacterial and fungal growth.

SENTIR® ADVANCED ODOR-BLOCKING TECHNOLOGY
Sentir is a breakthrough odor-blocking technology for EF Contract broadloom and modular commercial carpet. This self-renewing treatment is designed to control or eliminate offensive odors associated with indoor environments and is particularly effective on odor-bearing spills.

©2020 Engineered Floors LLC - This unique design is protected under the U.S. Copyright Act of 1976. Any unauthorized copying or duplication of this design constitutes copyright infringement in violation of federal law.

Due to the unique visual characteristics of modular carpets, pattern repeats and pattern run-off seams may appear more noticeable than in broadloom carpets. Such visual characteristics do not constitute a manufacturing defect, and as such, should be considered when selecting modular carpet and its installation. These photographs are representations of the installation for this modular product. Your modular installation may look different than these photos depending upon individual tile placement, lighting and overall space layout, including furnishings. Final tile placement and the resulting visual is thus the customer’s, and not EF Contract’s, responsibility.

STYLE	FERN FRN	HEATH HTH	SEDGE SDG
CONSTRUCTION	TEXTURED LOOP PATTERN	TEXTURED LOOP PATTERN	TEXTURED LOOP PATTERN
FIBER TYPE	100% ENCORE®SD ULTIMA® NYLON (with recycled content)		
DYE METHOD	SOLUTION DYED	SOLUTION DYED	SOLUTION DYED
OUNCE WEIGHT	22 OZ / SQUARE YARD	22 OZ / SQUARE YARD	22 OZ / SQUARE YARD
GAUGE	1/10 IN	1/10 IN	1/10 IN
BACKING	PREMIERBAC® PLUS	PREMIERBAC® PLUS	PREMIERBAC® PLUS
SIZE	12 FOOT ROLL	12 FOOT ROLL	12 FOOT ROLL
PATTERN REPEAT	9" W X 0.71" L	0.80" W X 0.83" L	0.60" W X 0.87" L
FINISHED PILE THICKNESS	0.065 INCHES	.083 INCHES	.070 INCHES
SPECIAL TECHNOLOGY	PROTEX® SOIL RELEASE	PROTEX® SOIL RELEASE	PROTEX® SOIL RELEASE
OPTIONAL SPECIAL TECHNOLOGIES	PROSEPT® ANTIMICROBIAL SENTIR® ADVANCED ODOR BLOCKING TREATMENT	PROSEPT® ANTIMICROBIAL SENTIR® ADVANCED ODOR BLOCKING TREATMENT	PROSEPT® ANTIMICROBIAL SENTIR® ADVANCED ODOR BLOCKING TREATMENT
PHYSICAL TESTING	FLOORING RADIANT PANEL – (CLASS 1) PILL TEST – (PASSES) SMOKE DENSITY – (LESS THAN 450 FLAMING) STATIC GENERATION – (LESS THAN 3.5 KV)	FLOORING RADIANT PANEL – (CLASS 1) PILL TEST – (PASSES) SMOKE DENSITY – (LESS THAN 450 FLAMING) STATIC GENERATION – (LESS THAN 3.5 KV)	FLOORING RADIANT PANEL – (CLASS 1) PILL TEST – (PASSES) SMOKE DENSITY – (LESS THAN 450 FLAMING) STATIC GENERATION – (LESS THAN 3.5 KV)
WARRANTIES	LIFETIME FIBER PERFORMANCE FOR WEAR LIFETIME FIBER PERFORMANCE FOR STATIC LIFETIME STAIN REMOVAL LIFETIME COLORFASTNESS TO LIGHT AND ATMOSPHERIC CONTAMINANTS 10 YEAR FOR TUFT BIND STRENGTH (EDGE RAVEL, YARN PULLS, ZIPPERING) 10 YEAR AGAINST DELAMINATION	LIFETIME FIBER PERFORMANCE FOR WEAR LIFETIME FIBER PERFORMANCE FOR STATIC LIFETIME STAIN REMOVAL LIFETIME COLORFASTNESS TO LIGHT AND ATMOSPHERIC CONTAMINANTS 10 YEAR FOR TUFT BIND STRENGTH (EDGE RAVEL, YARN PULLS, ZIPPERING) 10 YEAR AGAINST DELAMINATION	LIFETIME FIBER PERFORMANCE FOR WEAR LIFETIME FIBER PERFORMANCE FOR STATIC LIFETIME STAIN REMOVAL LIFETIME COLORFASTNESS TO LIGHT AND ATMOSPHERIC CONTAMINANTS 10 YEAR FOR TUFT BIND STRENGTH (EDGE RAVEL, YARN PULLS, ZIPPERING) 10 YEAR AGAINST DELAMINATION
RECOMMENDED INSTALLATION METHODS	 12' ROLL	 12' ROLL	 12' ROLL



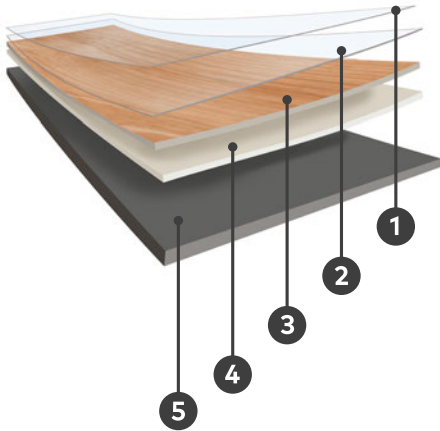
To learn more, visit:
EFCONTRACTFLOORING.COM

Sustainably Sound

EF Contract believes true sustainability requires full attention to the potential impacts of every aspect of our business. In accordance with our mission of waste reduction, all EF Contract LVT products are 100% recyclable.



You can rest assured that health is also a top priority and all EF Contract LVT products are FloorScore Certified.



- 1 Protective UV Cured Urethane With Ceramic Bead And Antimicrobial
- 2 12mil Wear Layer
- 3 High Definition Print Film
- 4 Impact Resistant Core Layer
- 5 Foundational Base Layer

©2018 ENGINEERED FLOORS LLC
This unique design is protected under the U.S. Copyright Act of 1976. Any unauthorized copying or duplication of this design constitutes copyright infringement in violation of federal law.

These photographs are representations of the installation for this modular product. Your modular installation may look different than these photos depending upon individual tile placement, lighting, and overall space layout, including furnishings. Final tile placement and the resulting visual is thus the customer's, and not EF Contract's responsibility.

ENVIRONMENTAL

INDOOR AIR QUALITY	FLOORSCORE® CERTIFIED
LEED V4	CONTRIBUTES TO IAQ: LOW EMITTING MATERIALS
END OF LIFE	100% RECYCLABLE

TECHNICAL INFORMATION

PRODUCT WARRANTY	7 YR LIGHT COMMERCIAL WARRANTY
REQUIRED ADHESIVE	COMMERCIALON PREMIUM MODULAR AND LVT ADHESIVE
INSTALLATION METHOD	FULL SPREAD

STYLE	FACET EFCFC
THICKNESS	2.5MM
WEAR LAYER	12MIL
FINISH/COATING	ENHANCED UV CURED URETHANE W/ CERAMIC MICRO BEAD
NOMINAL DIMENSIONS (INCHES)	7" X 48"
PATTERN REPEAT	RANDOM WOOD
MICRO-BEVELED	PLANK - YES
CLASS/ASTM F1700	CLASS III PRINTED FILM VINYL PLANK TYPE B (EMBOSSED)
BACKING CLASS	COMMERCIAL GRADE
GLOSS LEVEL	MATTE FINISH
COMMERCIAL TRAFFIC	LIGHT COMMERCIAL

ENVIRONMENTAL SPECIFICATIONS & TESTS

INDOOR AIR QUALITY	FLOORSCORE® CERTIFIED	
LEED V4	CONTRIBUTES TO IAQ: LOW EMITTING MATERIALS	
END OF LIFE	100% RECYCLABLE	
FLOORING RADIANT PANEL	COMPLIANT FOR ACCESSIBLE ROUTES	
SIZE AND TOLERANCE	ASTM F2055	PASSES
THICKNESS	ASTM F386	PASSES MAX. 0.010 IN.
RESIDUAL INDENTATION	ASTM F1914	PASSES
FLEXIBILITY	ASTM F137	PASSES
DIMENSIONAL STABILITY	ASTM F2199	PASSES
CHEMICAL RESISTANCE	ASTM F925	PASSES
RESISTANCE TO HEAT	ASTM F1514	PASSES
RESISTANCE TO LIGHT	ASTM F1515	PASSES
CRITICAL RADIANT FLUX	ASTM E648	CLASS 1 (< 0.45 W/CM2)
OPTICAL SMOKE DENSITY	ASTM E662	PASSES < 450
SLIP RESISTANCE	ASTM C1028	PASSES ADA COMPLIANT (> 0.50)
STATIC LOAD	ASTM F970	1000 PSI

PACKAGING

SQUARE FEET PER PLANK/CARTON	2.33 / 42
WEIGHT PER PLANK/CARTON	2.02 (LBS.) / 36.28 (LBS)
PIECES PER BOX	18
BOXES PER PALLET	50

INSTALLATION



1/3 DROP



ASHLAR



HERRINGBONE



1502 Coronet Drive
Dalton, Georgia 30720
U.S.A.

800.451.1250
efcontractflooring.com