

Gen Z Collection

Diversity
Tech Savvy

MODULAR CARPET





Gen Z

Generation Z was born in the digital age. Diverse and pragmatic- they value flexibility and individuality. Our new collection, Gen Z, embraces that ideal with a collaboration of two unique patterns that can be incorporated into various environments - from the minimalist and organic - to the modern, digital world. **Tech Savvy** offers a playful, eclectic design that features oblique overlays of softened geometrics for a visual harmony in contemporary interiors.

Diversity is an integration of dappled flecks layered over a muted neutral background that will engage the senses with its warmth and texture. Characterized by both clean and simple patterning and bold statements, the Gen Z aesthetic features functionality and personality with 18"x36" tiles in ten colorways.









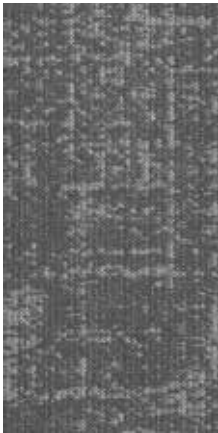


18" x 36" MODULAR

DIVERSITY



DIV15
GADGETS
QUICKSHIP



DIV54
ZOOMERS
QUICKSHIP



DIV59
HOMELANDER



DIV56
NATIVES



DIV72
ONLINE



DIV12
SOCIAL
QUICKSHIP



DIV18
WIRELESS



DIV43
MILLENNIALS



DIV46
YOUNGEST



DIV49
PERSPECTIVE

QS
OPTIONS



10 business days or less for orders up to 1,500 square yards on standard backing systems.

Samples & Customer Service
800-451-1250

SCAN ME!



Scan to order samples or check inventory.

18" x 36" MODULAR

TECH SAVVY



TSY15
GADGETS
QUICKSHIP



TSY54
ZOOMERS
QUICKSHIP



TSY59
HOMELANDER



TSY56
NATIVES



TSY72
ONLINE



TSY12
SOCIAL
QUICKSHIP



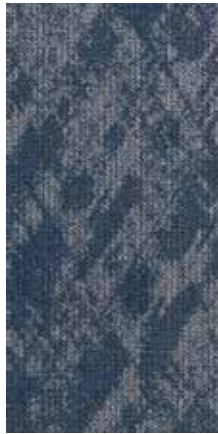
TSY18
WIRELESS



TSY43
MILLENNIALS



TSY46
YOUNGEST



TSY49
PERSPECTIVE

QS
OPTIONS



10 business days or less for orders up to 1,500 square yards on standard backing systems.

Samples & Customer Service
800-451-1250

SCAN ME!



Scan to order samples or check inventory.





COORDINATING PALETTE

Beyond the beauty of individual products, EF Contract's flooring **coordinate effortlessly** across all of our product platforms - modular carpet tile, broadloom, LVT and Kinetex textile composite flooring. This offering enables you to blend a range of designs to create **palettes** that meet the demands of each unique space.

| | | | |
|----|-------------------------------|-------|---------------------|
| 1 | DESIGNER'S CHOICE - STYLISTIC | DRC45 | MODULAR |
| 2 | FIRST CLASS - PREMIUM | FCS45 | MODULAR |
| 3 | DUAL - APPARENT | DUL12 | KINETEX |
| 4 | BATISTE MODERNE - BLEU MARINE | BTM49 | MODULAR & BROADLOOM |
| 5 | STAINED CONCRETE - LIMESTONE | 002 | LVT |
| 6 | TECH SAVVY - MILLENIALS | DIV43 | MODULAR |
| 7 | DIVERSITY - MILLENIALS | TSY43 | MODULAR |
| 8 | WOODLANDS II - IRONWOOD | 001 | LVT |
| 9 | BATISTE MODERNE - BLEU | BTM45 | MODULAR & BROADLOOM |
| 10 | CHINOOK - WIND SWEPT | CNK49 | KINETEX |



DIVERSITY - MILLENNIALS - MONOLITHIC | TECH SAVVY - MILLENNIALS - MONOLITHIC

PRODUCT DETAILS

Fiber

TERAPLEX® SD
EF Contract's TeraPlex® SD, produced by the world's most advanced carpet fiber extrusion process, is an advanced generation continuous filament PET fiber engineered for today's commercial flooring needs. It was created by leading polymer scientists and utilizes the most advanced PET resin to create carpet fiber with vibrant color, superior fade resistance, and longterm performance.

- Fiber thickness is 40% greater than conventional PET fiber for excellent crush resistance
- Higher purity and high molecular weight polymer resists abrasion and staining
- Solution dyed for superior colorfastness

Standard Backing

NEXUS® MODULAR
Nexus modular products can be installed in a variety of ways and are performance engineered to be visually appealing. In addition, they are designed to accommodate your long-term flooring budget.

- Contains pre-consumer recycled content and contributes to LEED
- Recyclable through EF Contract's R4 Carpet Reclamation Program

OPTIONAL BACKING

ADVANCE MODULAR CARPET BACKING™
is engineered to provide outstanding performance, protection and stability that is required of modular carpet systems.

- PVC-Free
- Contains recycled content and contributes to LEED

- Eligible for landfill diversion through the EF Contract's Reclamation Program

OTHER BACKING OPTIONS:

NEXUS® CUSHION
NEXUS® FC CUSHION

Moisture

Are high levels of moisture in your concrete slab causing issues with your project's floor covering? We can help.

- Nexus Modular Carpet with TileTabs - 99% RH
- Cost-efficient
- Long-term performance
- Straightforward, easy-to-understand Lifetime warranty
- Requires no special floor preparation

Adhesives

COMMERCIALON® PREMIUM MODULAR ADHESIVE
A high-strength acrylic latex-based carpet adhesive specifically formulated for bonding modular PVC backed carpet to the floor. This premium adhesive is for use with all Nexus Modular Tile products. This adhesive is guaranteed for the life of the installation when used in accordance with the EF Contract Carpet Installation Handbook. Commercialon Premium Modular Adhesive meets the CRI Low-VOC Emission Criteria. Commercialon Premium Modular Adhesive is nontoxic, has ultra-low odor and is antimicrobial in the dry state.

Optional

TILETABS
High Tack Adhesive Tabs (modular only)

Technologies

PROTEX® SOIL RELEASE
ProTex is a proprietary soil release technology that is applied and bonded to the pile fiber to impede soiling and to improve cleanability. It is standard on all EF Contract flooring products

Optional

PROSEPT® ANTIMICROBIAL
SENTIR® ADVANCED ODOR-BLOCKING TECHNOLOGY



| | |
|--|---|
| Warranty: Installed With TileTabs | Lifetime |
| Warranty: Installed With Commercialon® Premium Adhesive (non-prorated) | Lifetime |
| Warranty: Installed With Any Other Adhesive | 1 year |
| Max RH, pH Installed Without Commercialon® Sealer | 90% RH, pH 9 |
| Max RH, pH Installed With Commercialon® Premium Sealer | 99% RH, pH 11 (TileTabs) — 97% RH, pH 11 (Commercialon) |

PRODUCT DETAILS

| | | |
|-------------------------------|--|--|
| STYLE | DIVERSITY I TDIV | TECH SAVVY I TTSY |
| CONSTRUCTION | PATTERNED LOOP | PATTERNED LOOP |
| FIBER TYPE | TERAPLEX® SD PET | TERAPLEX® SD PET |
| DYE METHOD | SOLUTION DYED | SOLUTION DYED |
| OUNCE WEIGHT | 19 OZ / SQUARE YARD | 19 OZ / SQUARE YARD |
| GAUGE | 1/12 IN | 1/12 IN |
| STANDARD BACKING | NEXUS® MODULAR | NEXUS® MODULAR |
| OPTIONAL BACKING | ADVANCE MODULAR | ADVANCE MODULAR |
| DENSITY | 7,894 | 7,619 |
| SIZE | 18" X 36" | 18" X 36" |
| PATTERN REPEAT | N/A | N/A |
| TOTAL THICKNESS | 0.250 INCHES (0.635 CM) | 0.247 INCHES (0.627 CM) |
| SPECIAL TECHNOLOGY | PROTEX® SOIL RELEASE | PROTEX® SOIL RELEASE |
| OPTIONAL SPECIAL TECHNOLOGIES | PROSEPT® ANTIMICROBIAL SENTIR® ADVANCED ODOR BLOCKING TREATMENT | PROSEPT® ANTIMICROBIAL SENTIR® ADVANCED ODOR BLOCKING TREATMENT |
| PHYSICAL TESTING | FLOORING RADIANT PANEL – (CLASS 1) PILL TEST – (PASSES) SMOKE DENSITY – (LESS THAN 450 FLAMING) STATIC GENERATION – (LESS THAN 3.5 KV) | FLOORING RADIANT PANEL – (CLASS 1) PILL TEST – (PASSES) SMOKE DENSITY – (LESS THAN 450 FLAMING) STATIC GENERATION – (LESS THAN 3.5 KV) |
| FIBER WARRANTY | LIFETIME FIBER PERFORMANCE FOR WEAR LIFETIME FIBER PERFORMANCE FOR STATIC LIFETIME STAIN REMOVAL LIFETIME COLORFASTNESS TO LIGHT AND ATMOSPHERIC CONTAMINANTS | LIFETIME FIBER PERFORMANCE FOR WEAR LIFETIME FIBER PERFORMANCE FOR STATIC LIFETIME STAIN REMOVAL LIFETIME COLORFASTNESS TO LIGHT AND ATMOSPHERIC CONTAMINANTS |
| BACKING WARRANTY | LIFETIME FOR TUFT BIND STRENGTH (EDGE RAVEL, YARN PULLS, ZIPPERING) LIFETIME AGAINST DELAMINATION LIFETIME DIMENSIONAL STABILITY | LIFETIME FOR TUFT BIND STRENGTH (EDGE RAVEL, YARN PULLS, ZIPPERING) LIFETIME AGAINST DELAMINATION LIFETIME DIMENSIONAL STABILITY |

RECOMMENDED INSTALLATION METHODS

MONOLITHICHERRINGBONEASHLARBRICKBASKETWEAVEPARQUET

©2025 Engineered Floors LLC - This unique design is protected under the U.S. Copyright Act of 1976. Any unauthorized copying or duplication of this design constitutes copyright infringement in violation of federal law.

Due to the unique visual characteristics of modular carpets, pattern repeats and pattern run-off seams may appear more noticeable than in broadloom carpets. Such visual characteristics do not constitute a manufacturing defect, and as such, should be considered when selecting modular carpet and its installation. These photographs are representations of the installation for this modular product. Your modular installation may look different than these photos depending upon individual tile placement, lighting and overall space layout, including furnishings. Final tile placement and the resulting visual is thus the customer's, and not EF Contract's, responsibility.

To learn more, visit: EFCONTRACT.COM



PO Box 2207
Dalton, Georgia 30722
U.S.A.

800.451.1250
efcontract.com
JX9725M06