



# Garage Band

Planks

 EF Contract®





## **We're EF Contract.**

Part of the fastest-growing, most progressive family of flooring companies, we stand for confidence in quality, relentless service and doing right by all.

Our products are inspired by you: offering the carpet and hard-surface flooring that you want and need, that you've been seeking but unable to find, until now.

Every collection, pattern and colorway is created with best in class performance and in pursuit of design that is simply beautiful.

---

Modular carpet has transformed the flooring industry with its durability, ease of maintenance and design flexibility. We go even further, creating wide-ranging formats including squares, planks and skinny planks — as well as patterns and colorways that enable a custom look to every floor. So you can install coordinating products or even multiple colors of a single design to create variety within your space.

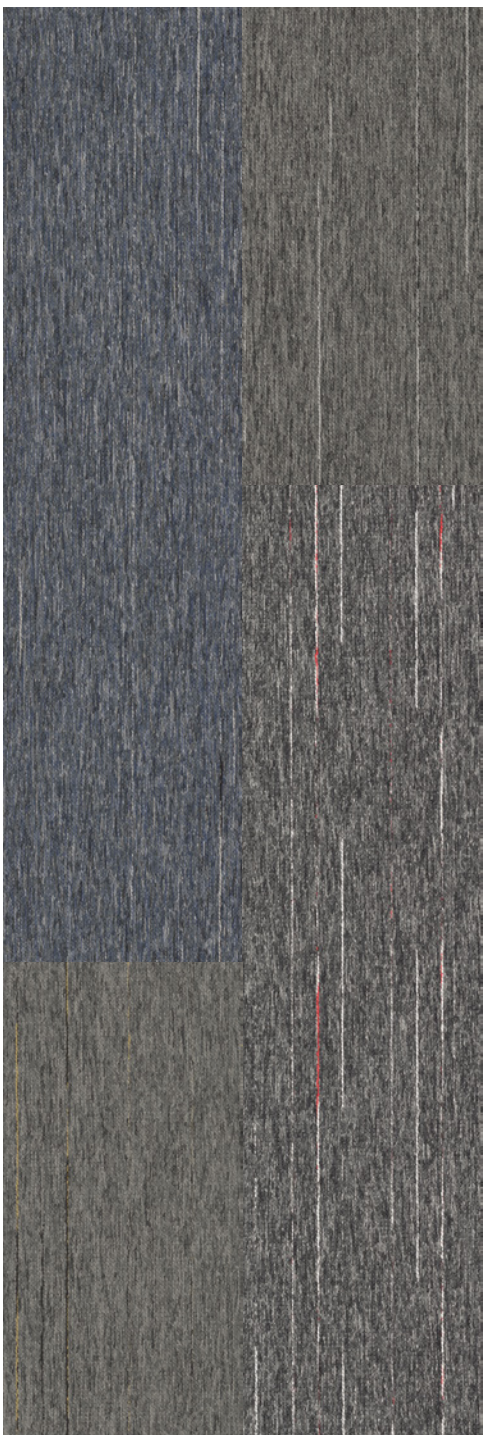




## Garage Band

Raw and energetic, Garage Band projects a straightforward attitude in its styling. Its low profile, edgy appearance is attained through unique tufting techniques to provide a distinctive vibe to any space.





GARAGE BAND - BLUES / GARAGE BAND - GRUNGE / GARAGE BAND - REGGAE / GARAGE BAND - INDIE









## GARAGE BAND



GARAGE BAND | GBD57  
INDIE



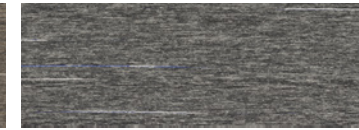
GARAGE BAND | GBD56  
GRUNGE



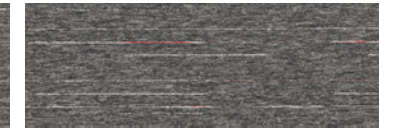
GARAGE BAND | GBD76  
ROCK



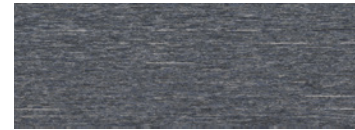
GARAGE BAND | GBD77  
HEAVY METAL



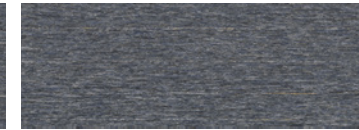
GARAGE BAND | GBD59  
PUNK



GARAGE BAND | GBD58  
REGGAE



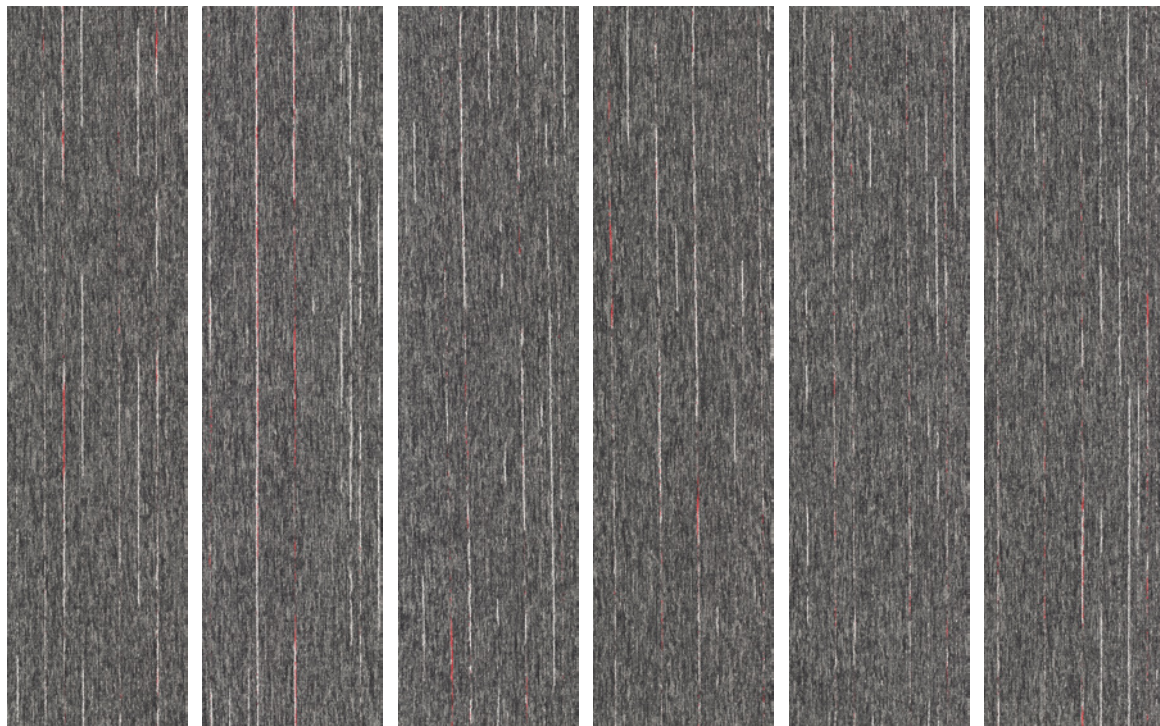
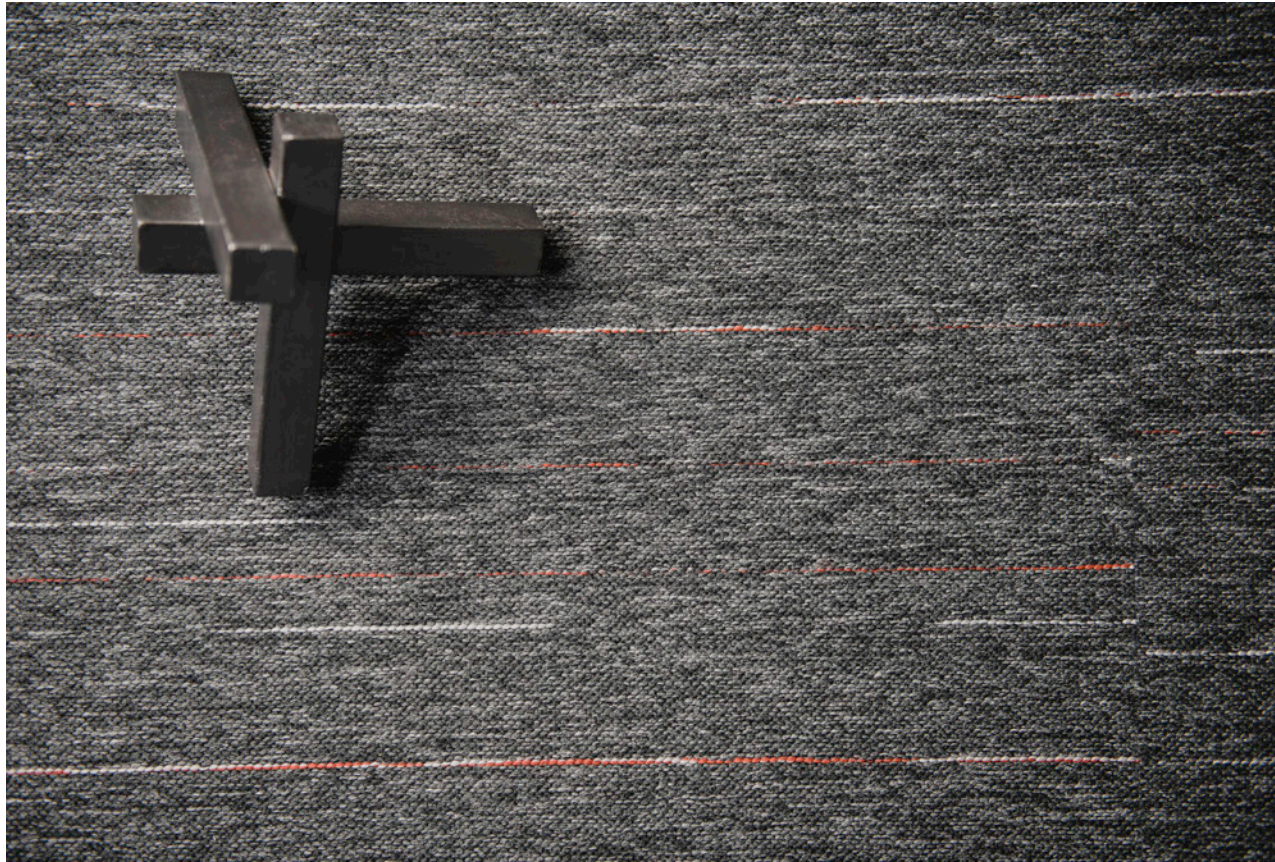
GARAGE BAND | GBD49  
BLUES



GARAGE BAND | GBD47  
FUNK

Style	GARAGE BAND   TGBD
Fiber Type	TERAPLEX SD™ PET
Dye Method	SOLUTION DYED
Gauge	1/10 IN
Backing	NEXUS® MODULAR
Density	16,920
Size	12" W X 48" L





Each color consists of six plank variations, shown above in color *Reggae*. Accent colors are random and may appear in every plank.



PRODUCT DETAILS

Fiber

TERAPLEX SD™

TeraPlex SD is an advanced GEN III continuous filament PET fiber for today's commercial flooring. Introduced after 30 years of intensive R&D by leading polymer scientists, TeraPlex SD utilizes the best PET resin to create a resilient carpet fiber with exceptional clarity and stain-resistance properties.

Moisture

Are high levels of moisture in your concrete slab causing issues with your project's floor covering? We can help.

- Nexus Modular Carpet with TileTabs - 99% RH
- Cost-efficient
- Long-term performance
- Straightforward, easy-to-understand Lifetime warranty
- Requires no special floor preparation

RH/pH Warranty

<b>Warranty: Installed With TileTabs</b>	Lifetime
<b>Warranty: Installed With Commercialon® Premium Adhesive (non-prorated)</b>	Lifetime
<b>Warranty: Installed With Any Other Adhesive</b>	1 year
<b>Max RH, pH Installed Without Sealer</b>	90% RH, pH 9
<b>Max RH, pH Installed With Commercialon® Premium Sealer</b>	99% RH, pH 11 (TileTabs) -- 97% RH, pH 11 (Commercialon)

Backings

NEXUS® MODULAR

Nexus modular products can be installed in a variety of ways and are performance engineered to be visually appealing. In addition, they are designed to accommodate your long-term flooring budget.

- Contains pre-consumer recycled content and contributes to LEED
- Recyclable through EF Contract's R4 Carpet Reclamation Program

Adhesives

COMMERCIALON® PREMIUM MODULAR ADHESIVE  
A high-strength acrylic latex-based carpet adhesive specifically formulated for bonding modular PVC-backed carpet to the floor. This premium adhesive is for use with all Nexus Modular Tile products. This adhesive is guaranteed for the life of the installation when used in accordance with the EF Contract Carpet Installation Handbook. Commercialon Premium Modular Adhesive meets the CRI Low-VOC Emission Criteria. Commercialon Premium Modular Adhesive is nontoxic, has ultra-low odor and is antimicrobial in the dry state.

Optional

TILETABS®  
High Tack Adhesive Tabs (modular only)

Technologies

PROTEX® SOIL RELEASE  
ProTex is a proprietary soil release technology that is applied and bonded to the pile fiber to impede soiling and to improve cleanability. It is standard on all EF Contract flooring products.

Optional

PROSEPT® ANTIMICROBIAL  
SENTIR® ADVANCED ODOR-BLOCKING TECHNOLOGY



©2019 Engineered Floors LLC - This unique design is protected under the U.S. Copyright Act of 1976. Any unauthorized copying or duplication of this design constitutes copyright infringement in violation of federal law.

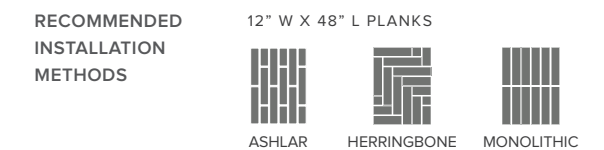
Due to the unique visual characteristics of modular carpets, pattern repeats and pattern run-off seams may appear more noticeable than in broadloom carpets. Such visual characteristics do not constitute a manufacturing defect, and as such, should be considered when selecting modular carpet and its installation. These photographs are representations of the installation for this modular product. Your modular installation may look different than these photos depending upon individual tile placement, lighting and overall space layout, including furnishings. Final tile placement and the resulting visual is thus the customer's, and not EF Contract's, responsibility.

To learn more, visit:

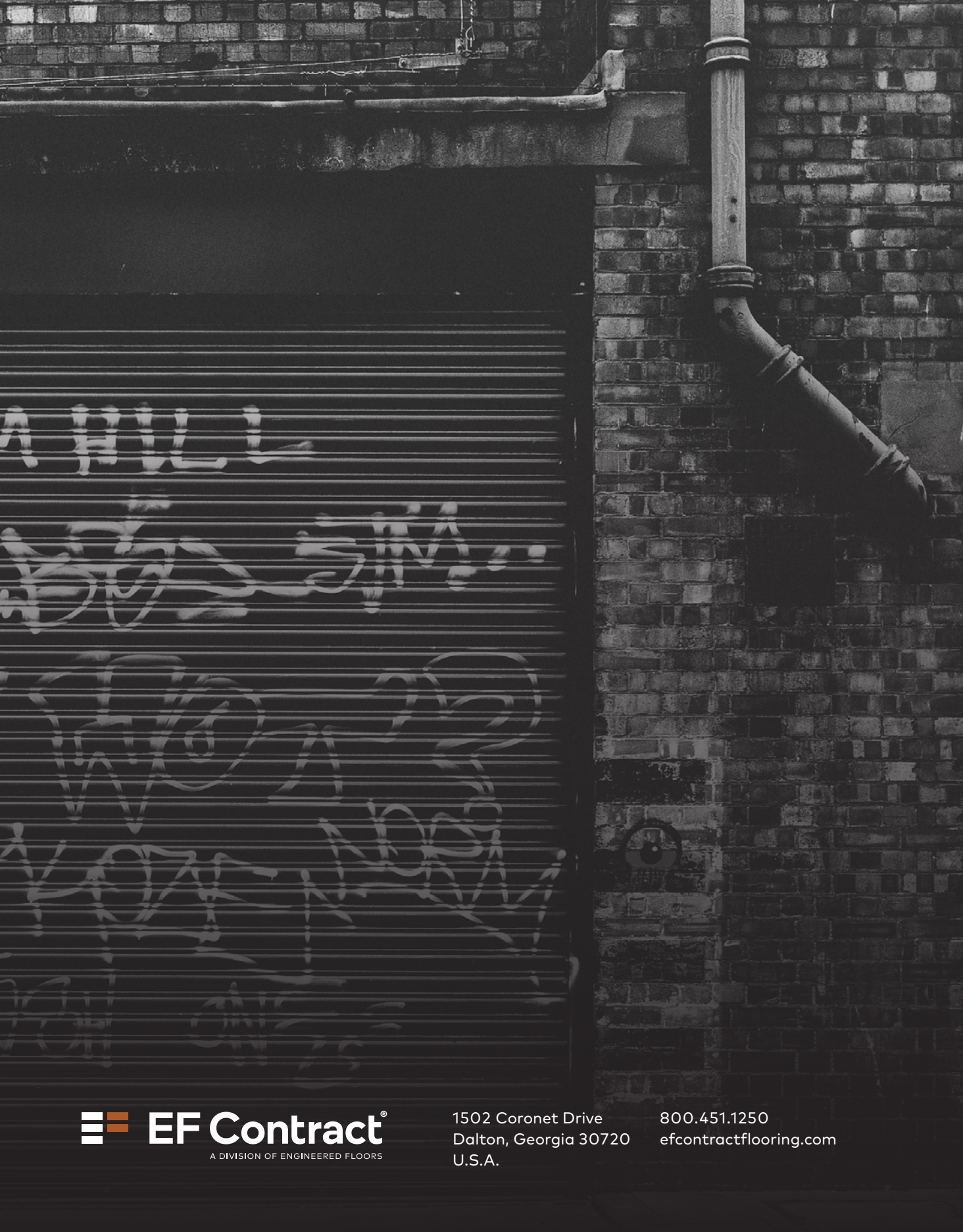
EFCONTRACTFLOORING.COM

STYLE	GARAGE BAND I TGBD
FIBER TYPE	TERAPLEX SD™ PET
DYE METHOD	SOLUTION DYED
GAUGE	1/10 IN
BACKING	NEXUS® MODULAR
SIZE	12" W X 48" L
FINISHED PILE THICKNESS	.019 INCHES
DENSITY	16,920
SPECIAL TECHNOLOGY	PROTEX® SOIL RELEASE
OPTIONAL SPECIAL TECHNOLOGIES	PROSEPT® ANTIMICROBIAL SENTIR® ADVANCED ODOR BLOCKING TREATMENT
PHYSICAL TESTING	FLOORING RADIANT PANEL – (CLASS 1) PILL TEST – (PASSES) SMOKE DENSITY – (LESS THAN 450 FLAMING) STATIC GENERATION – (LESS THAN 3.5 KV)

WARRANTIES	LIFETIME FIBER PERFORMANCE FOR WEAR LIFETIME FIBER PERFORMANCE FOR STATIC LIFETIME STAIN REMOVAL LIFETIME COLORFASTNESS TO LIGHT AND ATMOSPHERIC CONTAMINANTS LIFETIME FOR TUFT BIND STRENGTH (EDGE RAVEL, YARN PULLS, ZIPPERING) LIFETIME AGAINST DELAMINATION LIFETIME DIMENSIONAL STABILITY
------------	--







 **EF Contract**<sup>®</sup>  
A DIVISION OF ENGINEERED FLOORS

1502 Coronet Drive  
Dalton, Georgia 30720  
U.S.A.

800.451.1250  
[efcontractflooring.com](http://efcontractflooring.com)