

Folded Paper

Collection

Crease
Pleat
Tuck

CARPET | PLANKS

 EF Contract®



We're EF Contract.

Part of the fastest-growing, most progressive family of flooring companies, we stand for confidence in quality, relentless service and doing right by all.

Our products are inspired by you: offering the carpet and hard-surface flooring that you want and need, that you've been seeking but unable to find, until now.

Every collection, pattern and colorway is created with best in class performance and in pursuit of design that is simply beautiful.

Modular carpet has transformed the flooring industry with its durability, ease of maintenance and design flexibility. We go even further, creating wide-ranging formats including squares, planks and skinny planks — as well as patterns and colorways that enable a custom look to every floor. So you can install coordinating products or even multiple colors of a single design to create variety within your space.

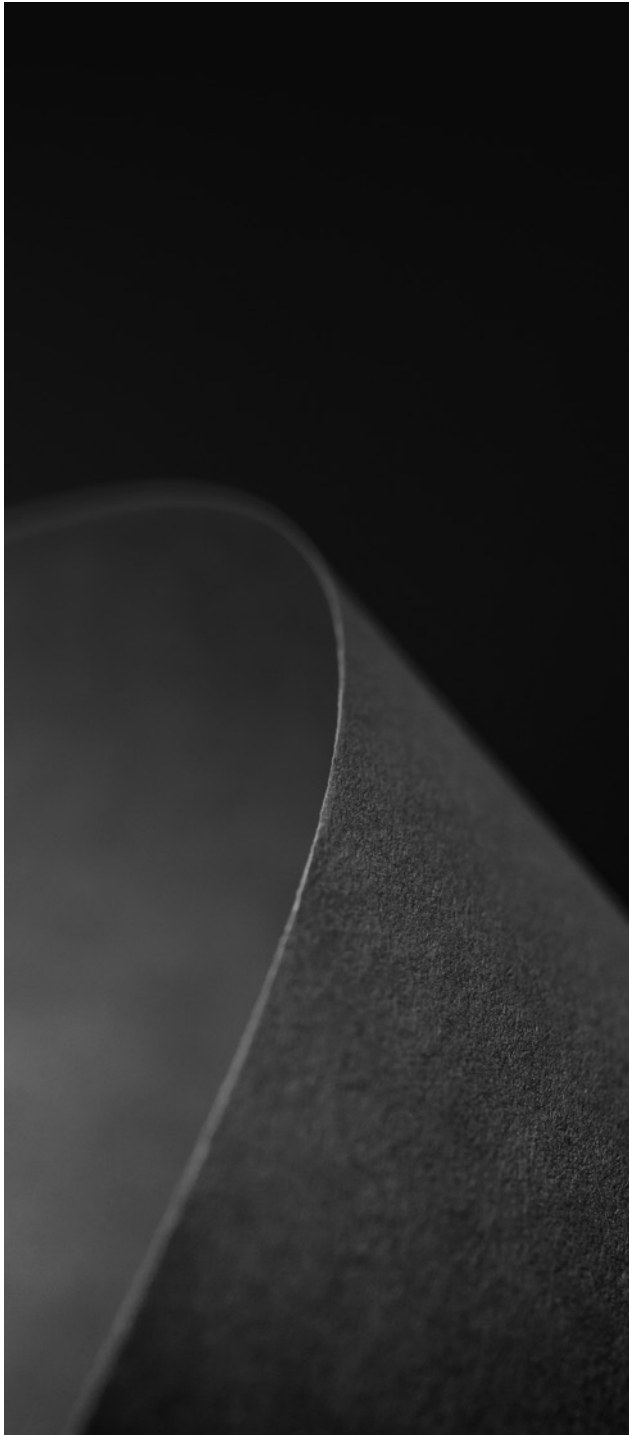


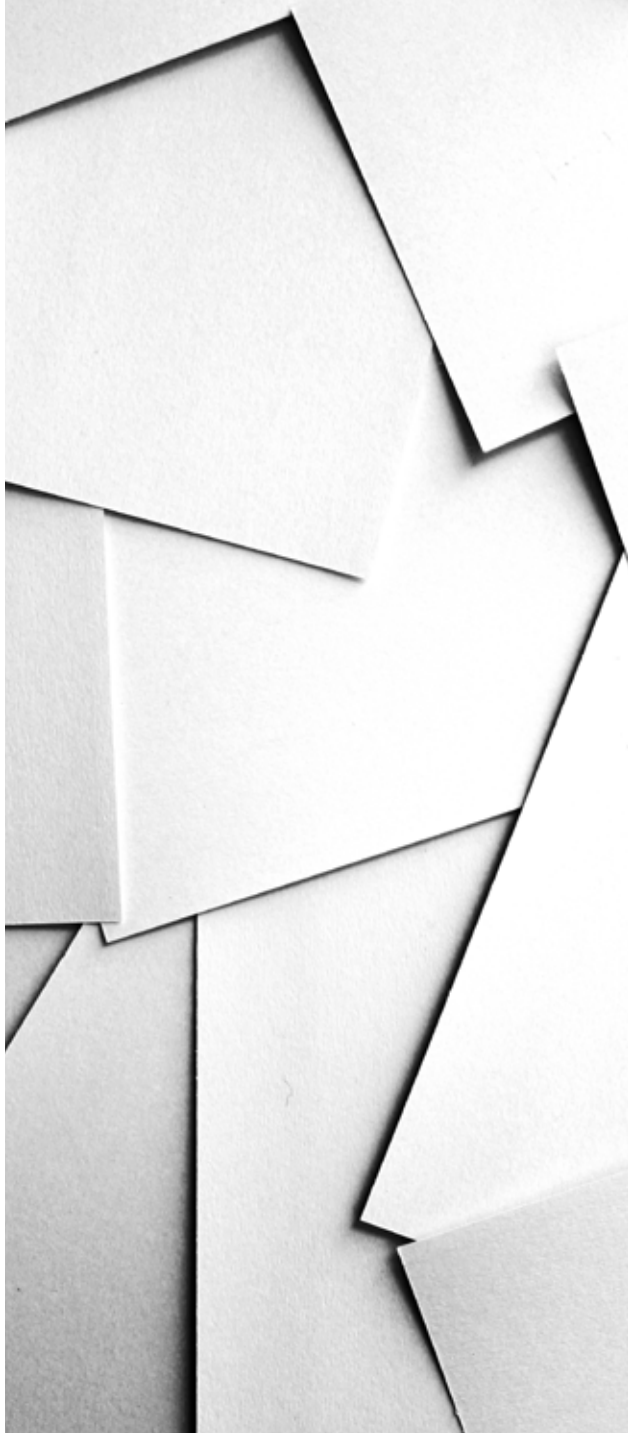


Folded Paper

Starting with the shapes of light and shadow created by manipulating paper, our Design Studio has crafted carpet patterns that translate the geometry of straight-line folds and the organic hand of paper. Available in three unique patterns and two shapes: Crease (square tile), Pleat and Tuck (skinny planks).









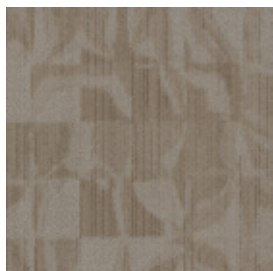


PLEAT - DITTO PAPER PLE49





CREASE



CREASE | CRE12
RICE PAPER



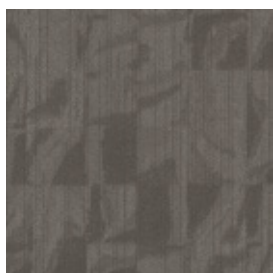
CREASE | CRE23
CONSTRUCTION PAPER



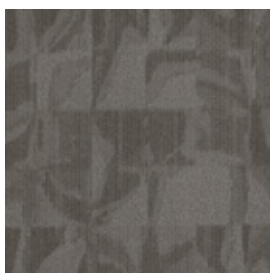
CREASE | CRE45
CELLOPHANE



CREASE | CRE49
DITTO PAPER



CREASE | CRE54
VELLUM



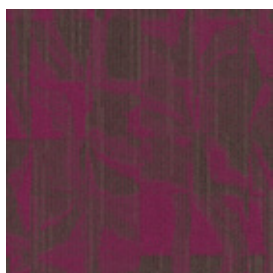
CREASE | CRE55
TRACING PAPER



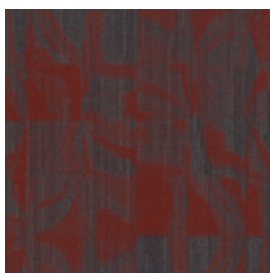
CREASE | CRE58
NEWSPRINT



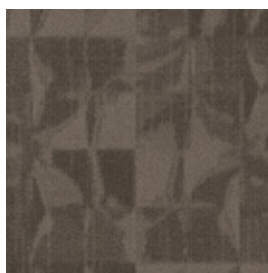
CREASE | CRE59
CARBON PAPER



CREASE | CRE66
CREPE PAPER



CREASE | CRE68
WRAPPING PAPER



CREASE | CRE76
BUTCHER PAPER



CREASE | CRE77
CARDSTOCK

Style	CREASE TCRE
Fiber Type	ENCORE® BCF NYLON WITH COLORLOC® PLUS
Dye Method	SOLUTION / YARN DYED
Ounce Weight	22 OZ / YD2
Gauge	1/12 IN
Backing	NEXUS® MODULAR
Density	6,429
Size	24" W X 24" L



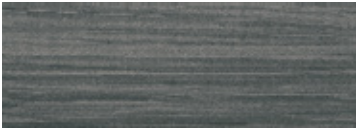
PLEAT



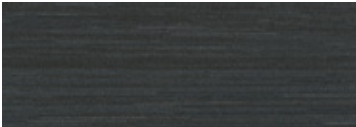
PLEAT | PLE12
RICE PAPER



PLEAT | PLE23
CONSTRUCTION PAPER



PLEAT | PLE45
CELLOPHANE



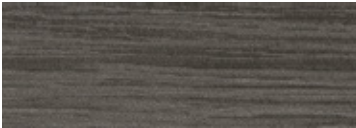
PLEAT | PLE49
DITTO PAPER



PLEAT | PLE54
VELLUM



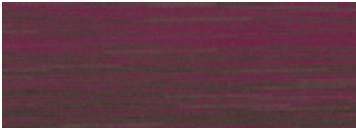
PLEAT | PLE55
TRACING PAPER



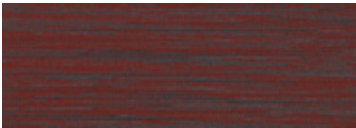
PLEAT | PLE58
NEWSPRINT



PLEAT | PLE59
CARBON PAPER



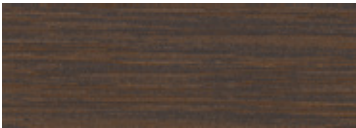
PLEAT | PLE66
CREPE PAPER



PLEAT | PLE68
WRAPPING PAPER



PLEAT | PLE76
BUTCHER PAPER



PLEAT | PLE77
CARD STOCK

Style	PLEAT TPLE
Fiber Type	ENCORE® BCF NYLON WITH COLORLOC® PLUS
Dye Method	SOLUTION / YARN DYED
Ounce Weight	22 OZ / YD2
Gauge	1/12 IN
Backing	NEXUS® MODULAR
Density	6,429
Size	12" W X 48" L



TUCK



TUCK | TCK12
RICE PAPER



TUCK | TCK23
CONSTRUCTION PAPER



TUCK | TCK45
CELLOPHANE



TUCK | TCK49
DITTO PAPER



TUCK | TCK54
VELLUM



TUCK | TCK55
TRACING PAPER



TUCK | TCK58
NEWSPRINT



TUCK | TCK59
CARBON PAPER



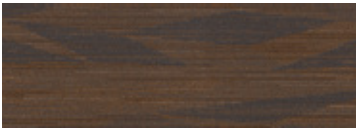
TUCK | TCK66
CREPE PAPER



TUCK | TCK68
WRAPPING PAPER



TUCK | TCK76
BUTCHER PAPER



TUCK | TCK77
CARD STOCK

Style	TUCK TTCK
Fiber Type	ENCORE® BCF NYLON WITH COLORLOC® PLUS
Dye Method	SOLUTION / YARN DYED
Ounce Weight	22 OZ / YD2
Gauge	1/12 IN
Backing	NEXUS® MODULAR
Density	6,429
Size	12" W X 48" L

PRODUCT DETAILS

Fiber

ENCORE® BCF NYLON WITH COLORLOC® PLUS

Encore BCF nylon with ColorLoc Plus is manufactured to offer exceptional color, performance and appearance retention. Carpet using Encore BCF nylon with ColorLoc Plus - our patented stain resistant technology - is engineered to resist permanent staining and is backed by Lifetime Performance Warranties for stain resistance, colorfastness, color transfer, water bleed, bleach resistance and wear

Moisture

Are high levels of moisture in your concrete slab causing issues with your project's floor covering? We can help.

- Nexus Modular Carpet with TileTabs - 99% RH
- Cost-efficient
- Long-term performance
- Straightforward, easy-to-understand Lifetime warranty
- Requires no special floor preparation

RH/pH Warranty

Warranty: Installed With TileTabs	Lifetime
Warranty: Installed With Commercialon® Premium Adhesive (non-prorated)	Lifetime
Warranty: Installed With Any Other Adhesive	1 year
Max RH, pH Installed Without Sealer	90% RH, pH 9
Max RH, pH Installed With Commercialon® Premium Sealer	99% RH, pH 11 (TileTabs) -- 97% RH, pH 11 (Commercialon)

Backings

NEXUS® MODULAR

Nexus modular products can be installed in a variety of ways and are performance engineered to be visually appealing. In addition, they are designed to accommodate your long-term flooring budget.

- Contains pre-consumer recycled content and contributes to LEED

- Recyclable through EF Contract's R4 Carpet Reclamation Program

Adhesives

COMMERCIALON® PREMIUM MODULAR ADHESIVE

A high-strength acrylic latex-based carpet adhesive specifically formulated for bonding modular PVC-backed carpet to the floor. This premium adhesive is for use with all Nexus Modular Tile products. This adhesive is guaranteed for the life of the installation when used in accordance with the EF Contract Carpet Installation Handbook. Commercialon Premium Modular Adhesive meets the CRI Low-VOC Emission Criteria. Commercialon Premium Modular Adhesive is nontoxic, has ultra-low odor and is antimicrobial in the dry state.

Optional

TILETABS®

High Tack Adhesive Tabs (modular only)

Technologies

PROTEX® SOIL RELEASE

ProTex is a proprietary soil release technology that is applied and bonded to the pile fiber to impede soiling and to improve cleanability. It is standard on all EF Contract flooring products.

Optional

PROSEPT® ANTIMICROBIAL

SENTIR® ADVANCED ODOR-BLOCKING TECHNOLOGY

©2019 Engineered Floors LLC - This unique design is protected under the U.S. Copyright Act of 1976. Any unauthorized copying or duplication of this design constitutes copyright infringement in violation of federal law.

Due to the unique visual characteristics of modular carpets, pattern repeats and pattern run-off seams may appear more noticeable than in broadloom carpets. Such visual characteristics do not constitute a manufacturing defect, and as such, should be considered when selecting modular carpet and its installation. These photographs are representations of the installation for this modular product. Your modular installation may look different than these photos depending upon individual tile placement, lighting and overall space layout, including furnishings. Final tile placement and the resulting visual is thus the customer's, and not EF Contract's, responsibility.

To learn more, visit:

EFCONTRACTFLOORING.COM



STYLE	CREASE TCRE	STYLE	TUCK TCK, PLEAT TPLE
CONSTRUCTION	TEXTURED LOOP	CONSTRUCTION	TEXTURED LOOP
FIBER TYPE	ENCORE® BCF NYLON WITH COLORLOC® PLUS	FIBER TYPE	ENCORE® BCF NYLON WITH COLORLOC® PLUS
DYE METHOD	SOLUTION / YARN DYED	DYE METHOD	SOLUTION / YARN DYED
OUNCE WEIGHT	22 OZ / YD2	OUNCE WEIGHT	22 OZ / YD2
GAUGE	1/12 IN	GAUGE	1/12 IN
BACKING	NEXUS® MODULAR	BACKING	NEXUS® MODULAR
SIZE	24" W X 24" L	SIZE	12" W X 48" L
PATTERN REPEAT	N/A	PATTERN REPEAT	N/A
FINISHED PILE THICKNESS	.084 INCHES	FINISHED PILE THICKNESS	.084 INCHES
SPECIAL TECHNOLOGY	PROTEX® SOIL RELEASE	SPECIAL TECHNOLOGY	PROTEX® SOIL RELEASE
OPTIONAL SPECIAL TECHNOLOGIES	PROSEPT® ANTIMICROBIAL SENTIR® ADVANCED ODOR BLOCKING TREATMENT	OPTIONAL SPECIAL TECHNOLOGIES	PROSEPT® ANTIMICROBIAL SENTIR® ADVANCED ODOR BLOCKING TREATMENT
PHYSICAL TESTING	FLOORING RADIANT PANEL – (CLASS 1) PILL TEST – (PASSES) SMOKE DENSITY – (LESS THAN 450 FLAMING) STATIC GENERATION – (LESS THAN 3.5 KV)	PHYSICAL TESTING	FLOORING RADIANT PANEL – (CLASS 1) PILL TEST – (PASSES) SMOKE DENSITY – (LESS THAN 450 FLAMING) STATIC GENERATION – (LESS THAN 3.5 KV)
WARRANTIES	LIFETIME FIBER PERFORMANCE FOR WEAR LIFETIME FIBER PERFORMANCE FOR STATIC LIFETIME STAIN REMOVAL LIFETIME COLORFASTNESS TO LIGHT AND ATMOSPHERIC CONTAMINANTS LIFETIME FOR TUFT BIND STRENGTH (EDGE RAVEL, YARN PULLS, ZIPPERING) LIFETIME AGAINST DELAMINATION LIFETIME DIMENSIONAL STABILITY	WARRANTIES	LIFETIME FIBER PERFORMANCE FOR WEAR LIFETIME FIBER PERFORMANCE FOR STATIC LIFETIME STAIN REMOVAL LIFETIME COLORFASTNESS TO LIGHT AND ATMOSPHERIC CONTAMINANTS LIFETIME FOR TUFT BIND STRENGTH (EDGE RAVEL, YARN PULLS, ZIPPERING) LIFETIME AGAINST DELAMINATION LIFETIME DIMENSIONAL STABILITY

RECOMMENDED INSTALLATION METHODS



QUARTER
TURN



ASHLAR

RECOMMENDED INSTALLATION METHODS



ASHLAR



BASKETWEAVE



HERRINGBONE



PARQUET



MONOLITHIC



1502 Coronet Drive
Dalton, Georgia 30720
U.S.A.

800.451.1250
efcontractflooring.com