



# Veil

Modular Carpet

 EF Contract®



## **We're EF Contract.**

Part of the fastest-growing, most progressive family of flooring companies, we stand for confidence in quality, relentless service and doing right by all.

Our products are inspired by you: offering the carpet and hard-surface flooring that you want and need, that you've been seeking but unable to find, until now.

Every collection, pattern and colorway are created with best in class performance and in pursuit of design that is simply beautiful.

---

Modular carpet has transformed the flooring industry with its durability, ease of maintenance and design flexibility. We go even further, creating wide-ranging formats including squares, planks and skinny planks — as well as patterns and colorways that enable a custom look to every floor. So you can install coordinating products or even multiple colors of a single design to create variety within your space.



## Veil

A shroud lifted. A curtain closed. Design unmasked. Style exposed. Inspired by the duality of a hidden form, Veil delivers a natural style that's refined, yet restrained, to any space. Available in 10 colorways.







VEIL - CONCEAL





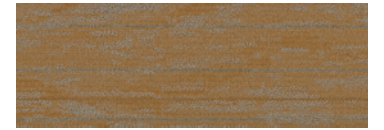
VEIL



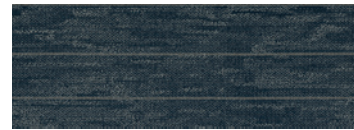
VEIL | VLT13  
MASK



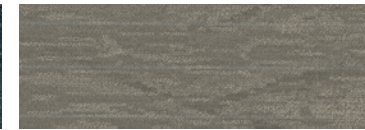
VEIL | VLT15  
ENVELOP



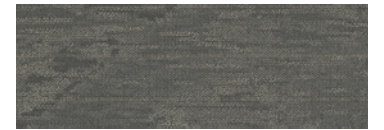
VEIL | VLT25  
SCREEN



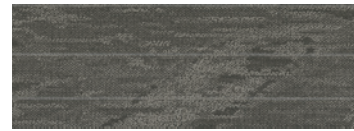
VEIL | VLT49  
OBSCURE



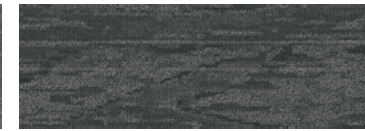
VEIL | VLT55  
SHADE



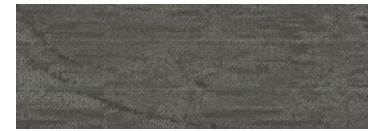
VEIL | VLT56  
SHADOW



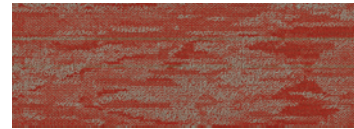
VEIL | VLT57  
OVERCAST



VEIL | VLT58  
CONCEAL



VEIL | VLT76  
SPIDER WEB



VEIL | VLT85  
SHIELD

Style	VEIL   TVLT
Fiber Type	ENCORE® SD ULTIMA® (WITH RECYCLED CONTENT)
Dye Method	SOLUTION DYED
Ounce Weight	24 OZ / YD2
Gauge	1/12 IN
Backing	NEXUS® MODULAR
Density	6,968
Size	12" W X 48" L

PRODUCT DETAILS

Fiber

ENCORE® SD ULTIMA® (WITH RECYCLED CONTENT)  
 Encore SD Ultima is specifically engineered to maximize appearance retention with exceptional color, performance, sustainability and practicality.

Moisture

Are high levels of moisture in your concrete slab causing issues with your project's floor covering? We can help.

- Nexus Modular Carpet with TileTabs - 99% RH
- Cost-efficient
- Long-term performance
- Straightforward, easy-to-understand Lifetime warranty
- Requires no special floor preparation

RH/pH Warranty

- Recyclable through EF Contract's R4 Carpet Reclamation Program

<b>Warranty: Installed With TileTabs</b>	Lifetime
<b>Warranty: Installed With Commercialon® Premium Adhesive (non-prorated)</b>	Lifetime
<b>Warranty: Installed With Any Other Adhesive</b>	1 year
<b>Max RH, pH Installed Without Sealer</b>	90% RH, pH 9
<b>Max RH, pH Installed With Commercialon® Premium Sealer</b>	99% RH, pH 11 (TileTabs) -- 97% RH, pH 11 (Commercialon)

Backings

NEXUS® MODULAR  
 Nexus modular products can be installed in a variety of ways and are performance engineered to be visually appealing. In addition, they are designed to accommodate your long-term flooring budget.

- Contains pre-consumer recycled content and contributes to LEED

Adhesives

COMMERCIALON® PREMIUM MODULAR ADHESIVE  
 A high-strength acrylic latex-based carpet adhesive specifically formulated for bonding modular PVC-backed carpet to the floor. This premium adhesive is for use with all Nexus Modular Tile products. This adhesive is guaranteed for the life of the installation when used in accordance with the EF Contract Carpet Installation Handbook. Commercialon Premium Modular Adhesive meets the CRI Low-VOC Emission Criteria. Commercialon Premium Modular Adhesive is nontoxic, has ultra-low odor and is antimicrobial in the dry state.

Optional

TILETABS®  
 High Tack Adhesive Tabs (modular only)

Technologies

PROTEX® SOIL RELEASE  
 ProTex is a proprietary soil release technology that is applied and bonded to the pile fiber to impede soiling and to improve cleanability. It is standard on all EF Contract flooring products.

Optional

PROSEPT® ANTIMICROBIAL  
 SENTIR® ADVANCED ODOR-BLOCKING TECHNOLOGY

©2019 Engineered Floors LLC - This unique design is protected under the U.S. Copyright Act of 1976. Any unauthorized copying or duplication of this design constitutes copyright infringement in violation of federal law.

Due to the unique visual characteristics of modular carpets, pattern repeats and pattern run-off seams may appear more noticeable than in broadloom carpets. Such visual characteristics do not constitute a manufacturing defect, and as such, should be considered when selecting modular carpet and its installation. These photographs are representations of the installation for this modular product. Your modular installation may look different than these photos depending upon individual tile placement, lighting and overall space layout, including furnishings. Final tile placement and the resulting visual is thus the customer's, and not EF Contract's, responsibility.

To learn more, visit:

EFCONTRACTFLOORING.COM



STYLE	VEIL   TVLT
CONSTRUCTION	PATTERNED SCROLL
FIBER TYPE	ENCORE® SD ULTIMA® (WITH RECYCLED CONTENT)
DYE METHOD	SOLUTION DYED
OUNCE WEIGHT	24 OZ / YD2
GAUGE	1/12 IN
BACKING	NEXUS® MODULAR
SIZE	12" W X 48" L
PATTERN REPEAT	N/A
FINISHED PILE THICKNESS	.123 INCHES
SPECIAL TECHNOLOGY	PROTEX® SOIL RELEASE

OPTIONAL SPECIAL TECHNOLOGIES	PROSEPT® ANTIMICROBIAL SENTIR® ADVANCED ODOR BLOCKING TREATMENT
-------------------------------	--

PHYSICAL TESTING	FLOORING RADIANT PANEL – (CLASS 1) PILL TEST – (PASSES) SMOKE DENSITY – (LESS THAN 450 FLAMING) STATIC GENERATION – (LESS THAN 3.5 KV)
------------------	---

WARRANTIES	LIFETIME FIBER PERFORMANCE FOR WEAR LIFETIME FIBER PERFORMANCE FOR STATIC LIFETIME STAIN REMOVAL LIFETIME COLORFASTNESS TO LIGHT AND ATMOSPHERIC CONTAMINANTS LIFETIME FOR TUFT BIND STRENGTH (EDGE RAVEL, YARN PULLS, ZIPPERING) LIFETIME AGAINST DELAMINATION LIFETIME DIMENSIONAL STABILITY
------------	--

RECOMMENDED INSTALLATION METHODS







 **EF Contract**<sup>®</sup>  
A DIVISION OF ENGINEERED FLOORS

1502 Coronet Drive  
Dalton, Georgia 30720  
U.S.A.

800.451.1250  
[efcontractflooring.com](http://efcontractflooring.com)