



Quickship

Kicks Collection

Double Face
Interlock
Ripstop
Stretch

CARPET | PLANKS

 EF Contract™



We're EF Contract.

Part of the fastest-growing, most progressive family of flooring companies, we stand for confidence in quality, relentless service and doing right by all.

Our products are inspired by you: offering the carpet and hard-surface flooring that you want and need, that you've been seeking but unable to find, until now.

Every collection, pattern and colorway are created with best in class performance and in pursuit of design that is simply beautiful.

It's always simple to work with EF Contract. With our Quickship program, it's also faster than ever before.

Every product in these collections is shipped (1,500 yards or less) within 10 business days of your order — all with remarkable service. Every project, every time. For more information, contact your Account Executive or call 800-451-1250.



Kicks

The clean and structured look of Kicks comes and goes through a strategic variation in contrast levels. Lovely accent colors bring even greater strength to the patterns and palettes. This flexible product, now available in planks, works beautifully across a wide range of spaces.

INTERLOCK - HIKER / DOUBLE FACE - HI-TOP / RIPSTOP - SPRING STEP / STRETCH - STITCHLITE



LEFT TO RIGHT: DOUBLE FACE - SNEAKER / INTERLOCK - STEEL TOE / STRETCH - GREY HEATHER / RIPSTOP - CROSSCOURT



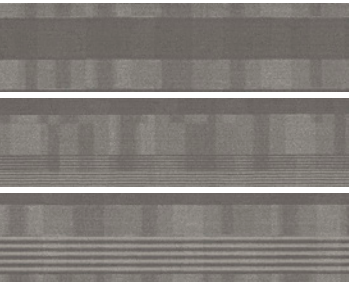


LEFT PAGE: RIP STOP - CROSSCOURT / INTERLOCK - STEEL TOE
RIGHT PAGE: STRETCH - GREY HEATHER / INTERLOCK - HIKER





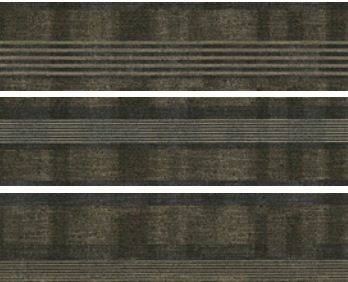
DOUBLE FACE



DOUBLE FACE | DBF52
SNEAKER



DOUBLE FACE | DBF56
HI-TOP



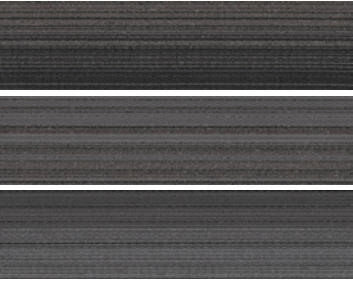
DOUBLE FACE | DBF59
BLACK MESH

KICKS

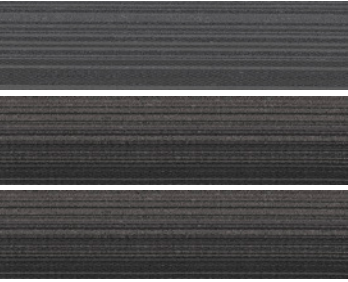
STRETCH



STRETCH | SCH52
GREY HEATHER

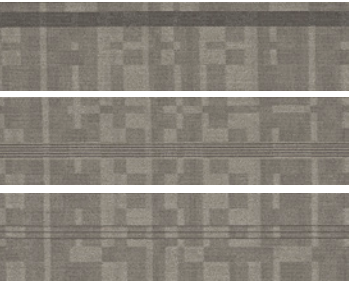


STRETCH | SCH56
SLIP-ON

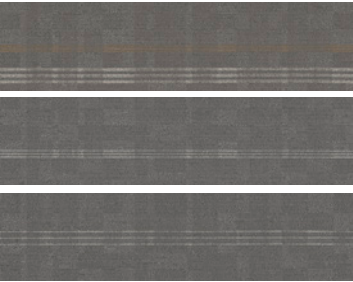


STRETCH | SCH59
STITCHLITE

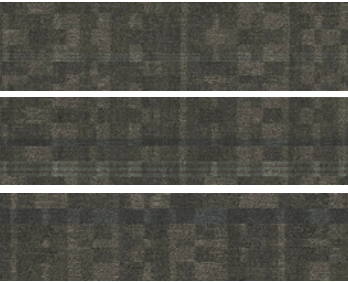
INTERLOCK



INTERLOCK | ITL52
HIKER



INTERLOCK | ITL56
STEEL TOE



INTERLOCK | ITL59
LOWRIDER

RIPSTOP



RIPSTOP | RPS52
CROSSCOURT



RIPSTOP | RPS56
LACE UP



RIPSTOP | RPS59
SPRING STEP

PRODUCT DETAILS

Fiber

ENCORE® SD ULTIMA® (WITH RECYCLED CONTENT)

Encore SD Ultima is specifically engineered to maximize appearance retention with exceptional color, performance, sustainability and practicality.

Backings

NEXUS® MODULAR

Nexus modular products can be installed in a variety of ways and are performance engineered to be visually appealing. In addition, they are designed to accommodate your long-term flooring budget.

- Contains pre-consumer recycled content and contributes to LEED
- Recyclable through EF Contract's R4 Carpet Reclamation Program

Adhesives

COMMERCIALON® PREMIUM MODULAR ADHESIVE

A high-strength acrylic latex-based carpet adhesive specifically formulated for bonding modular PVC-backed carpet to the floor. This premium adhesive is for use with all Nexus Modular Tile products. This adhesive is guaranteed for the life of the installation when used in accordance with the EF Contract Carpet Installation Handbook. Commercialon Premium Modular Adhesive meets the CRI Low-VOC Emission Criteria. Commercialon Premium Modular Adhesive is nontoxic, has ultra-low odor and is antimicrobial in the dry state.



Optional

TILETABS®

Technologies

PROTEX® SOIL RELEASE

ProTex is a proprietary fluorochemical technology that is applied and bonded to the pile fiber to impede soiling and to improve cleanability. It is standard on all EF Contract flooring products.

ProTex works similarly to the technology used in nonstick cookware by lowering the surface energy of the fibers which increases soil release properties. Very small soil particles cause carpet to appear dull. Thanks to ProTex, small soil particles are effectively removed by vacuuming or wet cleaning.

Optional

PROSEPT® ANTIMICROBIAL

SENTIR® ADVANCED ODOR-BLOCKING TECHNOLOGY

©2018 Engineered Floors LLC - This unique design is protected under the U.S. Copyright Act of 1976. Any unauthorized copying or duplication of this design constitutes copyright infringement in violation of federal law.

Due to the unique visual characteristics of modular carpets, pattern repeats and pattern run-off seams may appear more noticeable than in broadloom carpets. Such visual characteristics do not constitute a manufacturing defect, and as such, should be considered when selecting modular carpet and its installation. These photographs are representations of the installation for this modular product. Your modular installation may look different than these photos depending upon individual tile placement, lighting and overall space layout, including furnishings. Final tile placement and the resulting visual is thus the customer's, and not EF Contract's, responsibility.

To learn more, visit:

EFCONTRACTFLOORING.COM

STYLE	DOUBLE FACE TDBL	STRETCH TSCH	INTERLOCK TITL	RIPSTOP TRPS
CONSTRUCTION	TEXTURED LOOP PATTERN	TEXTURED LOOP PATTERN	TEXTURED LOOP PATTERN	PATTERNED SCROLL
FIBER TYPE	ENCORE® SD NYLON	ENCORE® SD NYLON	ENCORE® SD NYLON	ENCORE® SD NYLON
DYE METHOD	SOLUTION DYED	SOLUTION DYED	SOLUTION DYED	SOLUTION DYED
OUNCE WEIGHT	15 OZ	15 OZ	15 OZ	16 OZ
GAUGE	1/10 IN	1/10 IN	1/10 IN	1/12 IN
BACKING	NEXUS® MODULAR	NEXUS® MODULAR	NEXUS® MODULAR	NEXUS® MODULAR
SIZE	12" W X 48" L	12" W X 48" L	12" W X 48" L	12" W X 48" L
FINISHED PILE THICKNESS	.072 INCHES	.081 INCHES	.089 INCHES	.107 INCHES
DENSITY	7,500	6,667	6,067	5,383
SPECIAL TECHNOLOGY	PROTEX® SOIL RELEASE	PROTEX® SOIL RELEASE	PROTEX® SOIL RELEASE	PROTEX® SOIL RELEASE
OPTIONAL SPECIAL TECHNOLOGIES	PROSEPT® ANTIMICROBIAL	PROSEPT® ANTIMICROBIAL	PROSEPT® ANTIMICROBIAL	PROSEPT® ANTIMICROBIAL
	SENTIR® ADVANCED ODOR BLOCKING TREATMENT	SENTIR® ADVANCED ODOR BLOCKING TREATMENT	SENTIR® ADVANCED ODOR BLOCKING TREATMENT	SENTIR® ADVANCED ODOR BLOCKING TREATMENT
PHYSICAL TESTING	FLOORING RADIANT PANEL – (CLASS 1)	FLOORING RADIANT PANEL – (CLASS 1)	FLOORING RADIANT PANEL – (CLASS 1)	FLOORING RADIANT PANEL – (CLASS 1)
	PILL TEST – (PASSES)	PILL TEST – (PASSES)	PILL TEST – (PASSES)	PILL TEST – (PASSES)
	SMOKE DENSITY – (LESS THAN 450 FLAMING)	SMOKE DENSITY – (LESS THAN 450 FLAMING)	SMOKE DENSITY – (LESS THAN 450 FLAMING)	SMOKE DENSITY – (LESS THAN 450 FLAMING)
	STATIC GENERATION – (LESS THAN 3.5 KV)	STATIC GENERATION – (LESS THAN 3.5 KV)	STATIC GENERATION – (LESS THAN 3.5 KV)	STATIC GENERATION – (LESS THAN 3.5 KV)
WARRANTIES	LIFETIME FIBER PERFORMANCE FOR WEAR	LIFETIME FIBER PERFORMANCE FOR WEAR	LIFETIME FIBER PERFORMANCE FOR WEAR	LIFETIME FIBER PERFORMANCE FOR WEAR
	LIFETIME FIBER PERFORMANCE FOR STATIC	LIFETIME FIBER PERFORMANCE FOR STATIC	LIFETIME FIBER PERFORMANCE FOR STATIC	LIFETIME FIBER PERFORMANCE FOR STATIC
	LIFETIME STAIN REMOVAL	LIFETIME STAIN REMOVAL	LIFETIME STAIN REMOVAL	LIFETIME STAIN REMOVAL
	LIFETIME COLORFASTNESS TO LIGHT AND ATMOSPHERIC CONTAMINANTS	LIFETIME COLORFASTNESS TO LIGHT AND ATMOSPHERIC CONTAMINANTS	LIFETIME COLORFASTNESS TO LIGHT AND ATMOSPHERIC CONTAMINANTS	LIFETIME COLORFASTNESS TO LIGHT AND ATMOSPHERIC CONTAMINANTS
	LIFETIME FOR TUFT BIND STRENGTH	LIFETIME FOR TUFT BIND STRENGTH	LIFETIME FOR TUFT BIND STRENGTH	LIFETIME FOR TUFT BIND STRENGTH
	(EDGE RAVEL, YARN PULLS, ZIPPERING)	(EDGE RAVEL, YARN PULLS, ZIPPERING)	(EDGE RAVEL, YARN PULLS, ZIPPERING)	(EDGE RAVEL, YARN PULLS, ZIPPERING)
	LIFETIME AGAINST DELAMINATION	LIFETIME AGAINST DELAMINATION	LIFETIME AGAINST DELAMINATION	LIFETIME AGAINST DELAMINATION
	LIFETIME DIMENSIONAL STABILITY	LIFETIME DIMENSIONAL STABILITY	LIFETIME DIMENSIONAL STABILITY	LIFETIME DIMENSIONAL STABILITY

RECOMMENDED INSTALLATION METHODS

12" W X 48" L PLANKS



ASHLAR



BASKETWEAVE



PARQUET



HERRINGBONE



MONOLITHIC



EF Contract[™]
A DIVISION OF ENGINEERED FLOORS

1502 Coronet Drive
Dalton, Georgia 30720
U.S.A.

800.451.1250
efcontractflooring.com