

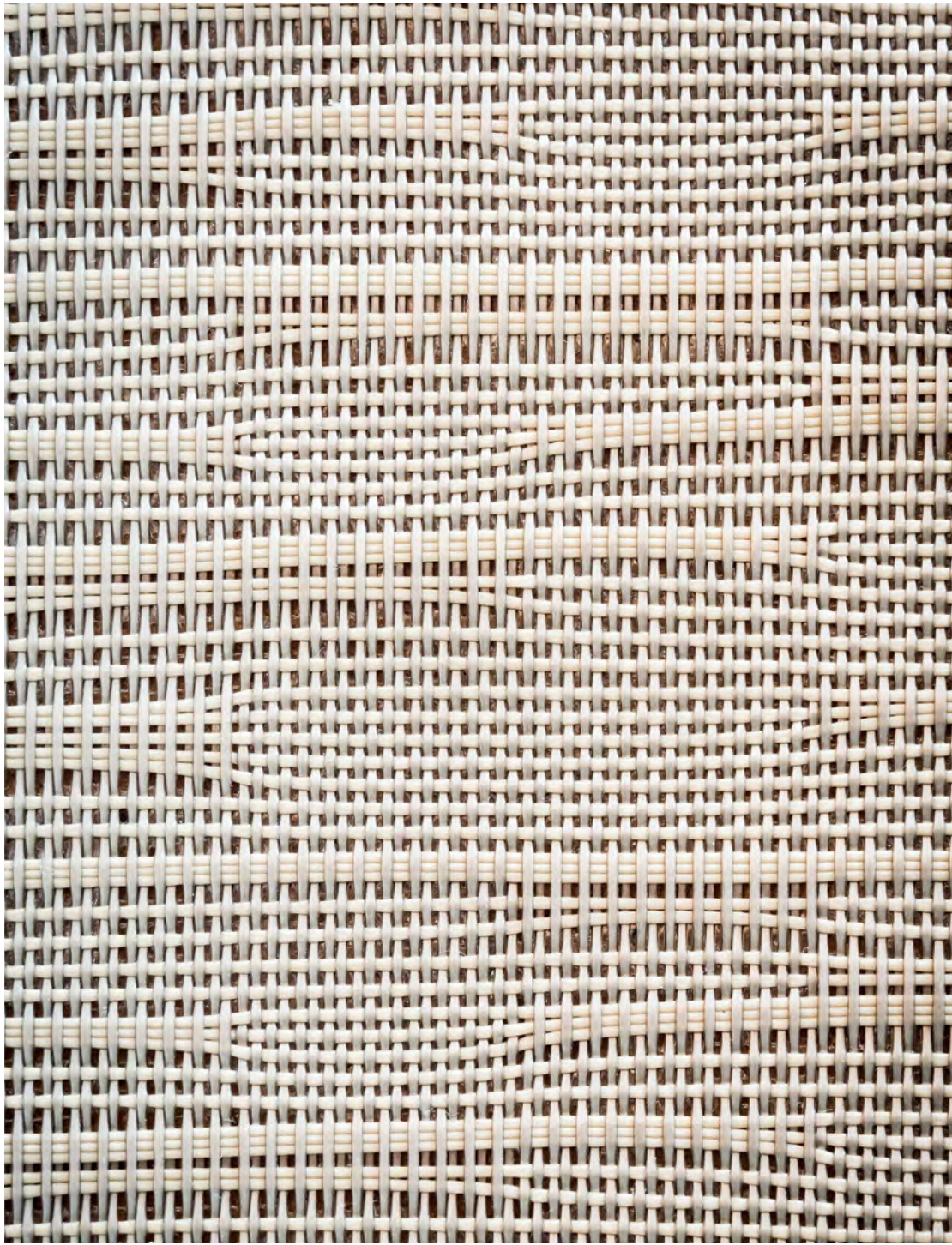
Crossing II + Stitch II

Modular & Broadloom Carpet

QUICKSHIP OPTIONS

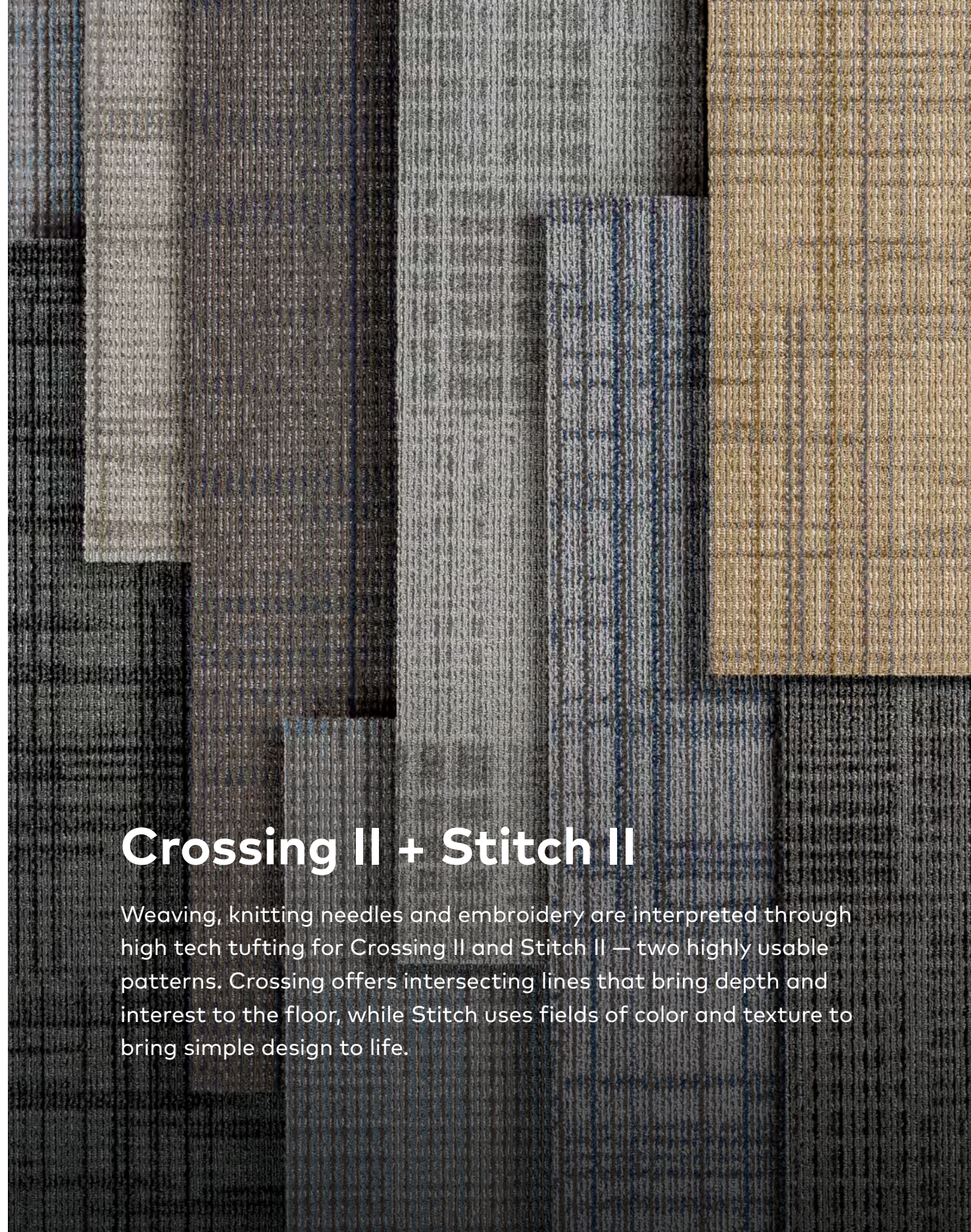


FRONT COVER: CROSSING II - KNITTING NEEDLE & SHADOW - ASHLAR | STITCH II - SHADOW - MONOLITHIC



Crossing II + Stitch II

Weaving, knitting needles and embroidery are interpreted through high tech tufting for Crossing II and Stitch II — two highly usable patterns. Crossing offers intersecting lines that bring depth and interest to the floor, while Stitch uses fields of color and texture to bring simple design to life.









ROLLS | MODULAR CARPET

CROSSING II



CSS47 | BARKCLOTH



CSS48 | DENIM



CSS76 | CORDUROY
QUICKSHIP - TILE ONLY



CSS52 | GREY TWILL



CSS72 | KNITTING NEEDLE
QUICKSHIP - TILE ONLY



CSS58 | RATTAN



CSS45 | SHADOW
QUICKSHIP - TILE ONLY



CSS86 | SHUTTLE BRONZE



CSS77 | TAPESTRY TAUPE



CSS10 | TATAMI



CSS32 | TINSEL

QS
OPTIONS



10 business days or less for orders up to 1,500 square yards on standard backing systems.

Samples & Customer Service
800-451-1250

SCAN ME!



Scan to order samples or check inventory.



ROLLS | MODULAR CARPET

STITCH II



STT47 | BARKCLOTH



STT48 | DENIM



STT76 | CORDUROY
QUICKSHIP - TILE ONLY



STT52 | GREY TWILL



STT72 | KNITTING NEEDLE
QUICKSHIP - TILE ONLY



STT58 | RATTAN



STT45 | SHADOW
QUICKSHIP - TILE ONLY



STT86 | SHUTTLE BRONZE



STT77 | TAPESTRY TAUPE



STT10 | TATAMI



STT32 | TINSEL

QS
OPTIONS



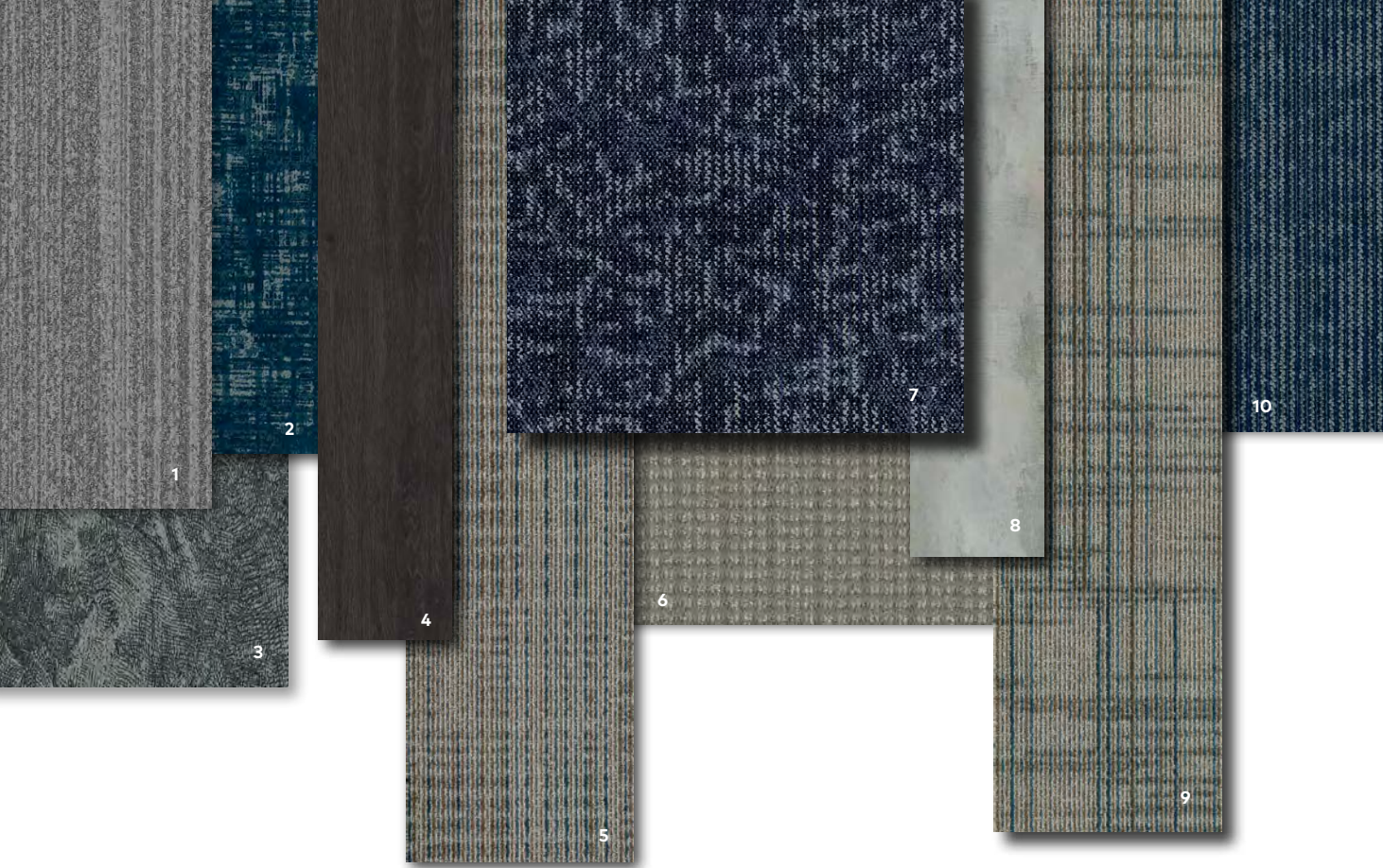
10 business days or less for orders up to 1,500 square yards on standard backing systems.

Samples & Customer Service
800-451-1250

SCAN ME!



Scan to order samples or check inventory.



COORDINATING PALETTES

Beyond the beauty of individual products, EF Contract's flooring **coordinate effortlessly** across all of our product platforms - modular carpet tile, broadloom, LVT and Kinetex textile composite flooring. This offering enables you to blend a range of designs to create **palettes** that meet the demands of each unique space.

1	COMMON THREAD - PLATINUM BLEND	CMT56	PLANK
2	INTRIGUE - ATTRACT	ITR47	KINETEX
3	IMPRINT - RAVEN	IMP56	KINETEX
4	FACET - BARKTONE	006	LVT
5	STITCH II - BARKCLOTH	STT47	PLANK
6	CONTEXT - AMBIENCE	CNT51	BROADLOOM
7	FREESTYLE - BICE	FRS49	MODULAR
8	MELANGE - FOGGY BEACH	005	LVT
9	CROSSING II - BARKCLOTH	CSS47	PLANK
10	TERRAIN PARK - NIGHTFALL	TER47	MODULAR

PRODUCT DETAILS

Fiber

100% ENCORE® SD ULTIMA® NYLON
(WITH RECYCLED CONTENT)

Encore SD Ultima is specifically engineered to maximize appearance retention with exceptional color, performance, sustainability and practicality.

FIBER OPTION

ENCORE® 100
The high recycled content incorporated into Encore 100 nylon provides a reduced environmental impact without compromising quality or color clarity.

- 100% post-industrial (pre-consumer) recycled content
- Full inclusion into the EF Contract’s Flooring Reclamation Program
- Lifetime warranty for stain removal, colorfastness, wear and static
- See sales rep for for availability and price

Standard Backing

NEXUS® MODULAR
Nexus modular products can be installed in a variety of ways and are performance engineered to be visually appealing. In addition, they are designed to accommodate your long-term flooring budget.

- Contains pre-consumer recycled content and contributes to LEED
- Recyclable through EF Contract’s Flooring Reclamation Program

PREMIERBAC® PLUS BACKING
PremierBac® Plus is standard on broadloom products and provides superior construction to ensure solid dimensional stability for broadloom carpets.

- Stretch-in or glue-down installation
- Manufactured in an ISO 14001 certified facility
- Contains pre-consumer recycled content and contributes to LEED
- Recyclable through EF Contract’s R4 Carpet Reclamation Program

ADVANCE MODULAR CARPET BACKING™
is engineered to provide outstanding performance, protection and stability that is required of modular carpet systems.

- PVC-Free
- Contains recycled content and contributes to LEED
- Eligible for landfill diversion through the EF Contract’s Flooring Reclamation Program

Optional

PROSEPT® ANTIMICROBIAL
SENTIR® ADVANCED ODOR-BLOCKING TECHNOLOGY

Moisture

Are high levels of moisture in your concrete slab causing issues with your project’s floor covering? We can help.

- Nexus Modular Carpet with TileTabs - 99% RH
- Cost-efficient
- Long-term performance
- Straightforward, easy-to-understand Lifetime warranty
- Requires no special floor preparation

Adhesives

COMMERCIALON® PREMIUM MODULAR ADHESIVE
A high-strength acrylic latex-based carpet adhesive specifically formulated for bonding modular PVC backed carpet to the floor. This premium adhesive is for use with all Nexus Modular Tile products. This adhesive is guaranteed for the life of the installation when used in accordance with the EF Contract Carpet Installation Handbook. Commercialon Premium Modular Adhesive meets the CRI Low-VOC Emission Criteria. Commercialon Premium Modular Adhesive is nontoxic, has ultra-low odor and is antimicrobial in the dry state.

Optional

TILETABS
High Tack Adhesive Tabs (modular only)

Technologies

PROTEX® SOIL RELEASE
ProTex is a proprietary soil release technology that is applied and bonded to the pile fiber to impede soiling and to improve cleanability. It is standard on all EF Contract flooring products

Warranty: Installed With TileTabs	Lifetime
Warranty: Installed With Commercialon® Premium Adhesive (non-prorated)	Lifetime
Warranty: Installed With Any Other Adhesive	1 year
Max RH, pH Installed Without Commercialon® Sealer	90% RH, pH 9
Max RH, pH Installed With Commercialon® Premium Sealer	99% RH, pH 11 (TileTabs) — 97% RH, pH 11 (Commercialon)

PRODUCT DETAILS

STYLE	CROSSING II TCSS STITCH II TSTT	CROSSING II CSS STITCH II STT
CONSTRUCTION	TIP-SHEARED SCROLL	TIP-SHEARED SCROLL
FIBER TYPE	100% ENCORE® SD ULTIMA® NYLON (with recycled content)	100% ENCORE® SD ULTIMA® NYLON (with recycled content)
FIBER OPTION	ENCORE® 100	ENCORE® 100
DYE METHOD	SOLUTION DYED	SOLUTION DYED
OUNCE WEIGHT	22 OZ SQUARE YARD	24 OZ / SQUARE YARD
GAUGE	1/12 IN	1/12 IN
STANDARD BACKING	NEXUS® MODULAR	PREMIERBAC® PLUS
OPTIONAL BACKING	ADVANCE MODULAR	N/A
FINISHED PILE THICKNESS	TCSS: .124 INCHES TSTT: .124 INCHES	CSS: .131 INCHES STT: .137 INCHES
DENSITY	TCSS: 6,387 TSTT: 6,387	CSS: 6,595 STT: 6,307
SIZE	12" W X 48" L	12 FOOT ROLL
PATTERN REPEAT	N/A	CSS: 24" W X 48"L STT: 24" W X 47.3" L
SPECIAL TECHNOLOGY	PROTEX® SOIL RELEASE	PROTEX® SOIL RELEASE
OPTIONAL SPECIAL TECHNOLOGIES	PROSEPT® ANTIMICROBIAL SENTIR® ADVANCED ODOR BLOCKING TREATMENT	PROSEPT® ANTIMICROBIAL SENTIR® ADVANCED ODOR BLOCKING TREATMENT
PHYSICAL TESTING	FLOORING RADIANT PANEL – (CLASS 1) PILL TEST – (PASSES) SMOKE DENSITY – (LESS THAN 450 FLAMING) STATIC GENERATION – (LESS THAN 3.5 KV)	FLOORING RADIANT PANEL – (CLASS 1) PILL TEST – (PASSES) SMOKE DENSITY – (LESS THAN 450 FLAMING) STATIC GENERATION – (LESS THAN 3.5 KV)
WARRANTIES	LIFETIME FIBER PERFORMANCE FOR WEAR LIFETIME FIBER PERFORMANCE FOR STATIC LIFETIME STAIN REMOVAL LIFETIME COLORFASTNESS TO LIGHT AND ATMOSPHERIC CONTAMINANTS LIFETIME FOR TUFT BIND STRENGTH (EDGE RAVEL, YARN PULLS, ZIPPERING) LIFETIME AGAINST DELAMINATION LIFETIME DIMENSIONAL STABILITY	LIFETIME FIBER PERFORMANCE FOR WEAR LIFETIME FIBER PERFORMANCE FOR STATIC LIFETIME STAIN REMOVAL LIFETIME COLORFASTNESS TO LIGHT AND ATMOSPHERIC CONTAMINANTS 10 YEAR FOR TUFT BIND STRENGTH (EDGE RAVEL, YARN PULLS, ZIPPERING) 10 YEAR AGAINST DELAMINATION

RECOMMENDED
INSTALLATION
METHODS

ASHLAR

BASKETWEAVE


PARQUET

HERRINGBONE

MONOLITHIC

 12' ROLL

REDUCE
REUSE
RECYCLE
RETURN





Made in the U.S.A.



To learn more, visit:

EFCONTRACT.COM

©2025 Engineered Floors LLC - This unique design is protected under the U.S. Copyright Act of 1976. Any unauthorized copying or duplication of this design constitutes copyright infringement in violation of federal law.

Due to the unique visual characteristics of modular carpets, pattern repeats and pattern run-off seams may appear more noticeable than in broadloom carpets. Such visual characteristics do not constitute a manufacturing defect, and as such, should be considered when selecting modular carpet and its installation. These photographs are representations of the installation for this modular product. Your modular installation may look different than these photos depending upon individual tile placement, lighting and overall space layout, including furnishings. Final tile placement and the resulting visual is thus the customer’s, and not EF Contract’s, responsibility.



PO Box 2207
Dalton, Georgia 30722
U.S.A.

800.451.1250
efcontractflooring.com