

The Brights

Modular Carpet

 EF Contract™



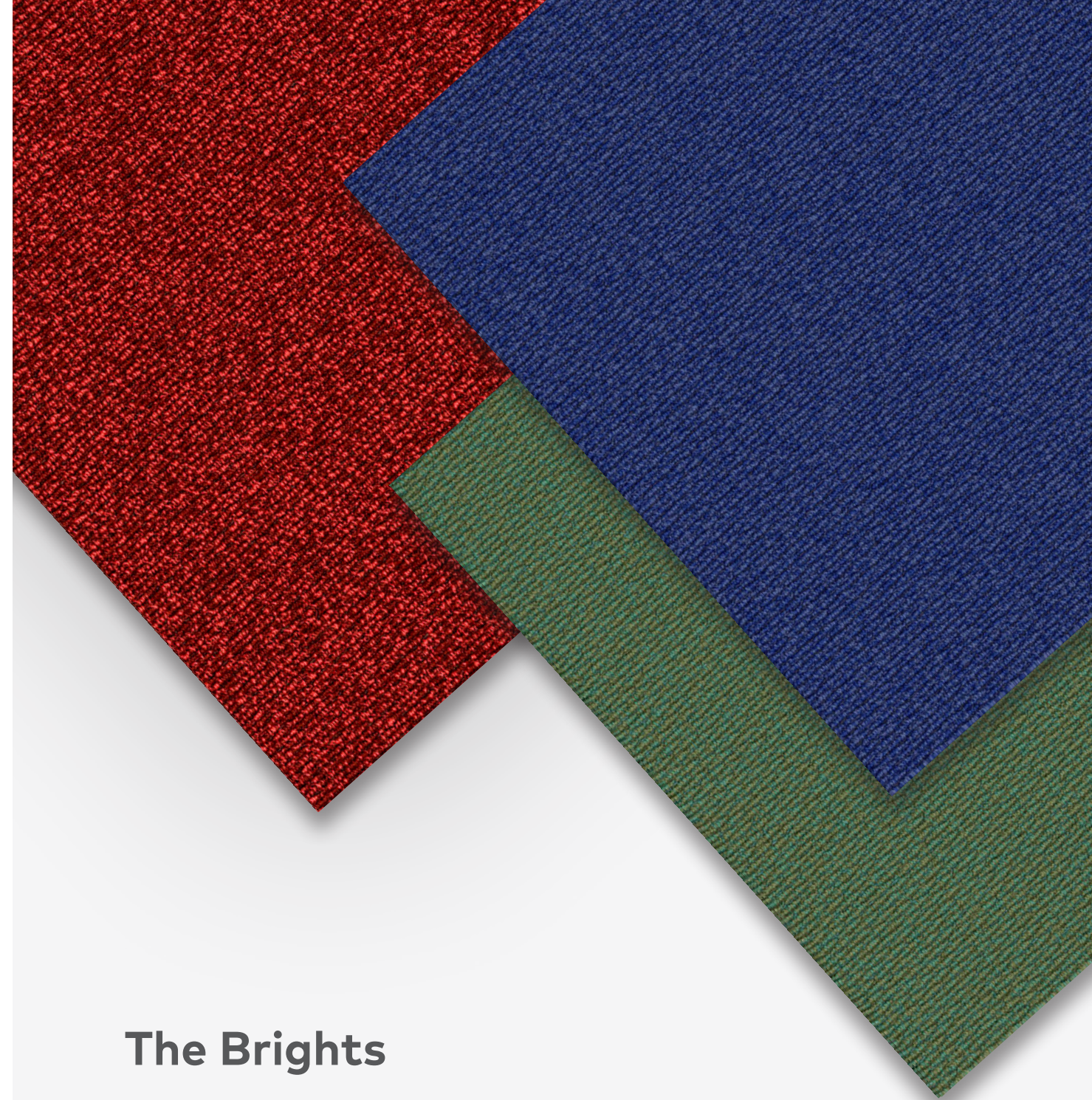
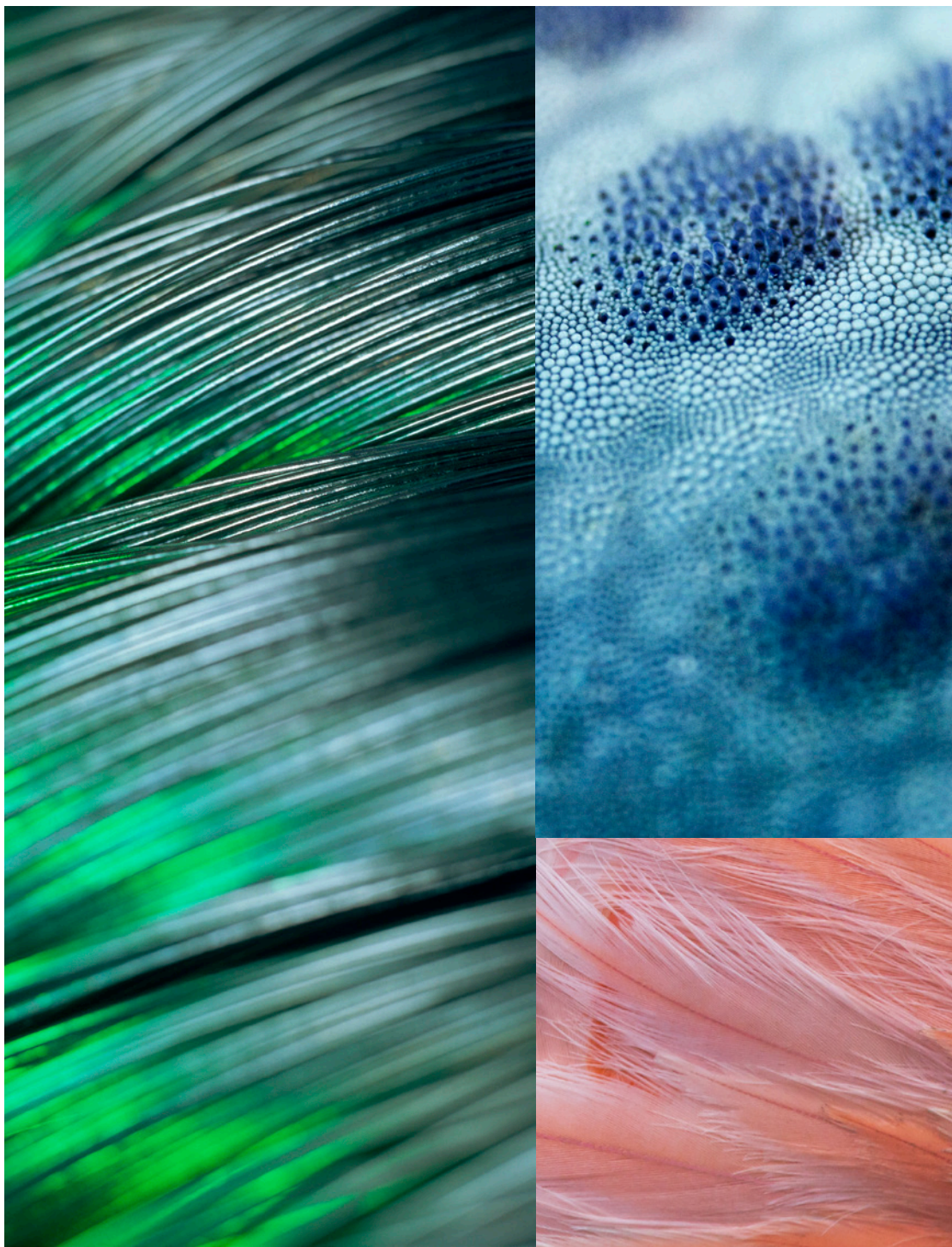
We're EF Contract.

Part of the fastest-growing, most progressive family of flooring companies, we stand for confidence in quality, relentless service and doing right by all.

Our products are inspired by you: offering the carpet and hard-surface flooring that you want and need, that you've been seeking but unable to find, until now.

Every collection, pattern and colorway are created with best in class performance and in pursuit of design that is simply beautiful.

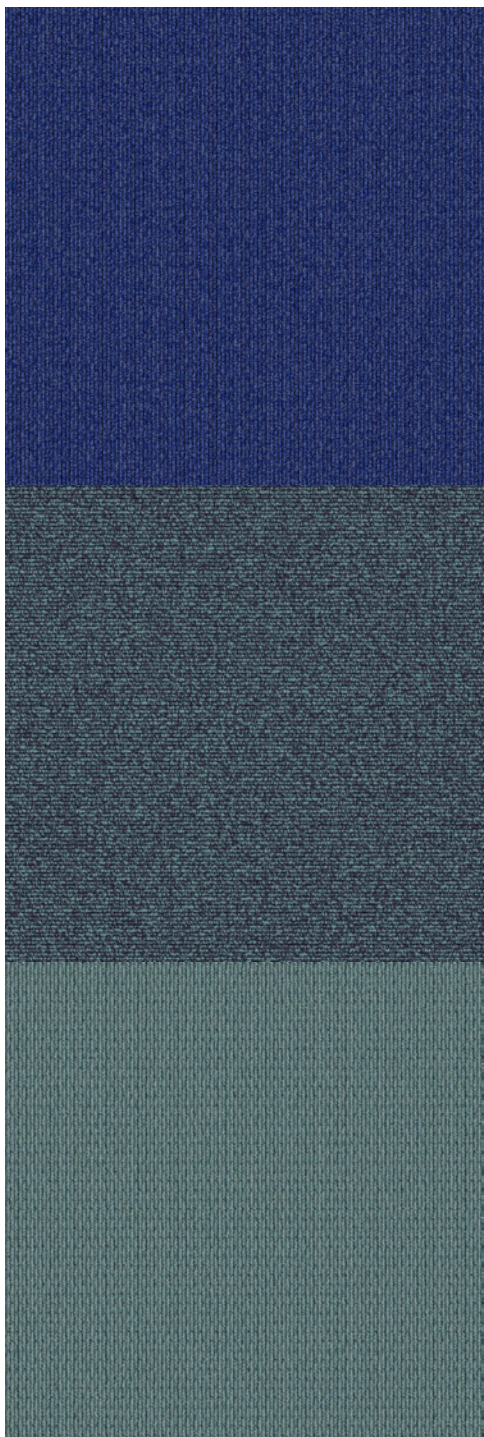
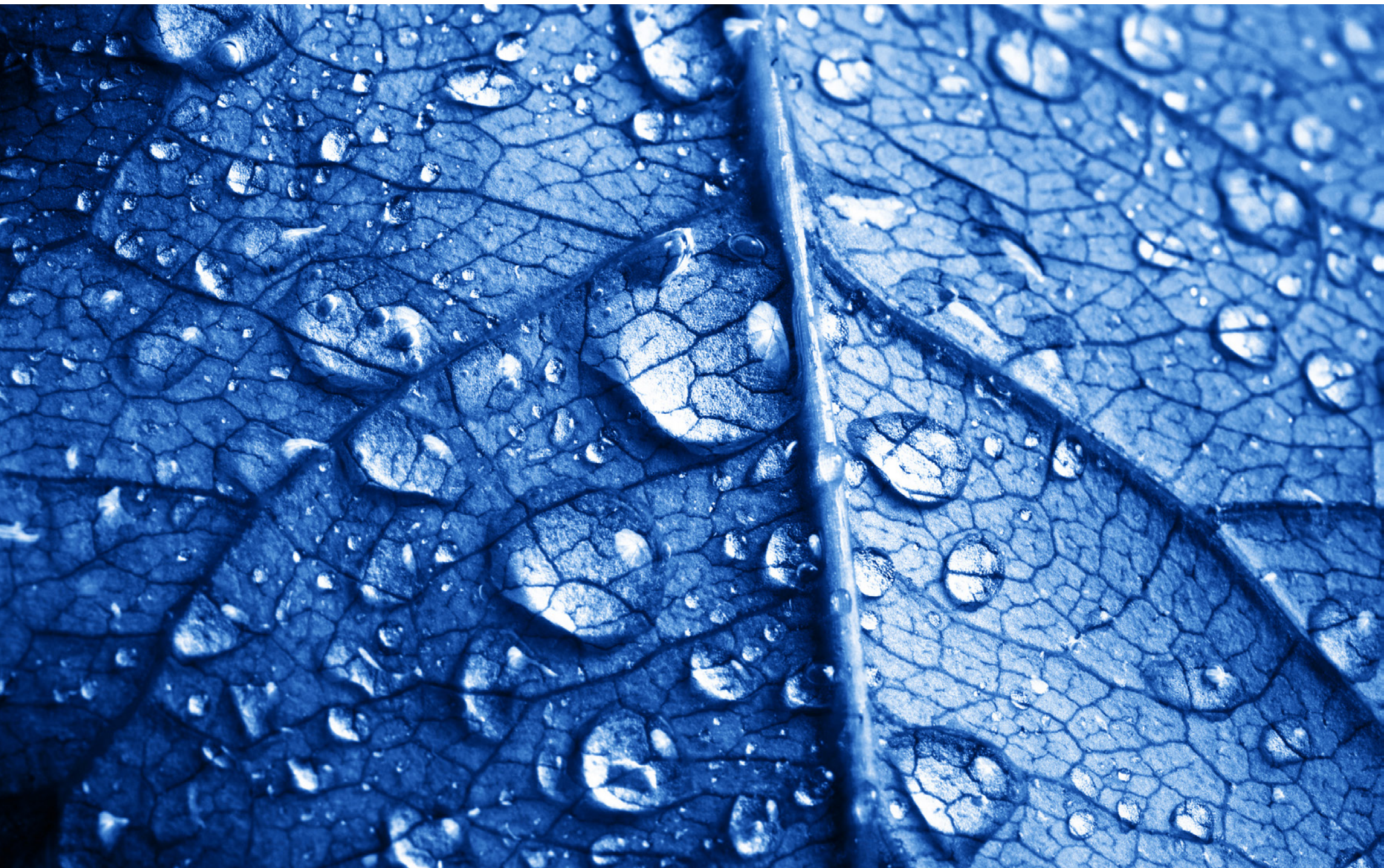
Modular carpet has transformed the flooring industry, with its durability, ease of maintenance and design flexibility. We go even further, creating wide-ranging formats including squares, planks and skinny planks — as well as patterns and colorways that enable a custom look to every floor. So you can install coordinating products or even multiple colors of a single design to create variety within your space.



The Brights

Who knew that a textured loop carpet could bring this kind of beauty?

With The Brights, it's all about color. Use one (or more) from the palette as an accent alongside any EF Contract pattern, or cover the floor with the collection to turn any space into a playground of color.



THE BRIGHTS - MOOD INDIGO / SASSY SAPPHIRE / HYPER BLUE





THE BRIGHTS - STARDUST / THE BRIGHTS - RED ZING / FRAGMENTS - CRINKLE / FRAGMENTS - SNIPPET

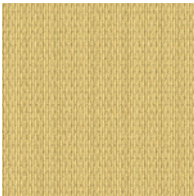




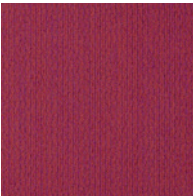
THE BRIGHTS



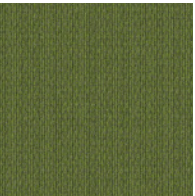
THE BRIGHTS | BT309
BIG BANG



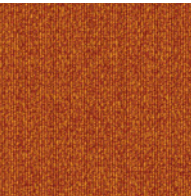
THE BRIGHTS | BT502
BRITE IDEA



THE BRIGHTS | BT805
DIVA FUCHSIA



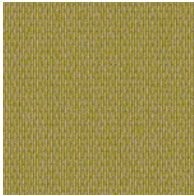
THE BRIGHTS | BT607
EXTREME GREEN



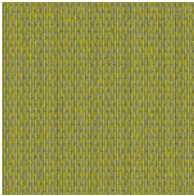
THE BRIGHTS | BT205
HOT TICKET



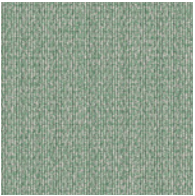
THE BRIGHTS | BT703
HYPER BLUE



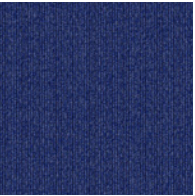
THE BRIGHTS | BT503
LEMON ZEST



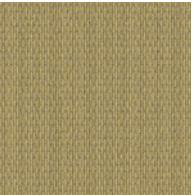
THE BRIGHTS | BT605
LIME LITE



THE BRIGHTS | BT602
MERMAID



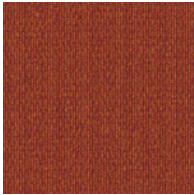
THE BRIGHTS | BT708
MOOD INDIGO



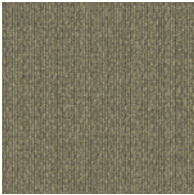
THE BRIGHTS | BT501
MOONBEAM



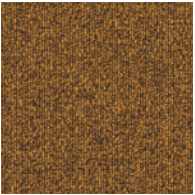
THE BRIGHTS | BT908
NIGHT SKY



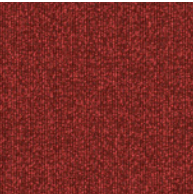
THE BRIGHTS | BT204
ORANGE CRUSH



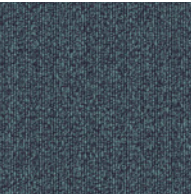
THE BRIGHTS | BT304
OVERCAST



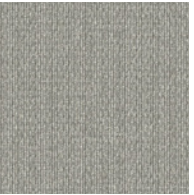
THE BRIGHTS | BT508
PENNY SAVED



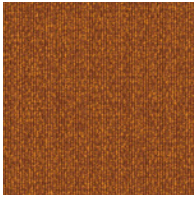
THE BRIGHTS | BT106
RED ZING



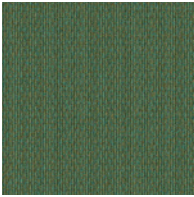
THE BRIGHTS | BT709
SASSY SAPPHIRE



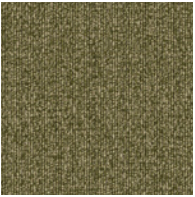
THE BRIGHTS | BT901
STARDUST



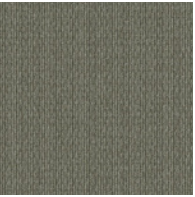
THE BRIGHTS | BT202
SUN GLAZE



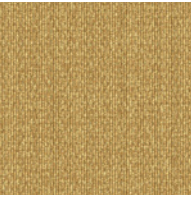
THE BRIGHTS | BT608
TEAL ZEAL



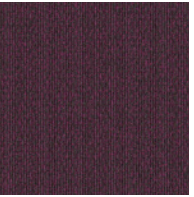
THE BRIGHTS | BT609
TREE HUGGER



THE BRIGHTS | BT906
TWINKLE



THE BRIGHTS | BT504
UMBERGLOW



THE BRIGHTS | BT808
VIVID VIOLET

Style	THE BRIGHTS BT
Construction	TEXTURED LOOP
Fiber Type	ENCORE® SD NYLON
Dye Method	SOLUTION DYED
Ounce Weight	17 OZ / YD2
Gauge	1/10 IN
Backing	NEXUS® MODULAR
Density	7,374
Size	24" W X 24" L

PRODUCT DETAILS

Fiber

ENCORE® BCF NYLON WITH COLORLOC® PLUS

Encore BCF nylon with ColorLoc Plus is manufactured to offer exceptional color, performance and appearance retention. Carpet using Encore BCF nylon with ColorLoc Plus – our patented stain-resistant technology – is engineered to resist permanent staining and is backed by Lifetime Performance Warranties for stain resistance, colorfastness, color transfer, water bleed, bleach resistance and wear.

Backings

NEXUS® MODULAR

Nexus modular products can be installed in a variety of ways and are performance engineered to be visually appealing. In addition, they are designed to accommodate your long-term flooring budget.

- Contains pre-consumer recycled content and contributes to LEED
- Recyclable through the EF Contract’s R4 Carpet Reclamation Program

Adhesives

COMMERCIALON® PREMIUM MODULAR ADHESIVE

A high-strength acrylic latex-based carpet adhesive specifically formulated for bonding modular PVC-backed carpet to the floor. This premium adhesive is for use with all Nexus Modular Tile products. This adhesive is guaranteed for the life of the installation when used in accordance with the EF Contract Carpet Installation Handbook. Commercialon Premium Modular Adhesive meets the CRI Low-VOC Emission Criteria. Commercialon Premium Modular Adhesive is nontoxic, has ultra-low odor and is antimicrobial in the dry state.

REDUCE
REUSE
RECYCLE
RETURN

R4



Can be installed Glue-Free with
TileTabs®
Nexus® Tile Connectors

Optional

TILETABS®

Technologies

PROTEX® SOIL RELEASE

ProTex is a proprietary fluorochemical technology that is applied and bonded to the pile fiber to impede soiling and to improve cleanability. It is standard on all EF Contract flooring products.

ProTex works similarly to the technology used in nonstick cookware by lowering the surface energy of the fibers which increases soil release properties. Very small soil particles cause carpet to appear dull. Thanks to ProTex, small soil particles are effectively removed by vacuuming or wet cleaning.

Optional

PROSEPT® ANTIMICROBIAL

SENTIR® ADVANCED ODOR-BLOCKING TECHNOLOGY

©2018 Engineered Floors LLC - This unique design is protected under the U.S. Copyright Act of 1976. Any unauthorized copying or duplication of this design constitutes copyright infringement in violation of federal law.

Due to the unique visual characteristics of modular carpets, pattern repeats and pattern run-off seams may appear more noticeable than in broadloom carpets. Such visual characteristics do not constitute a manufacturing defect, and as such, should be considered when selecting modular carpet and its installation. These photographs are representations of the installation for this modular product. Your modular installation may look different than these photos depending upon individual tile placement, lighting and overall space layout, including furnishings. Final tile placement and the resulting visual is thus the customer's, and not EF Contract's, responsibility.

To learn more, visit:

EFCONTRACTFLOORING.COM

STYLE	THE BRIGHTS BT SQUARE
CONSTRUCTION	TEXTURED LOOP
FIBER TYPE	ENCORE® SD NYLON
DYE METHOD	SOLUTION DYED
OUNCE WEIGHT	17 OZ / YD2
GAUGE	1/10 IN
BACKING	NEXUS® MODULAR
SIZE	24" W X 24" L
PATTERN REPEAT	N/A
FINISHED PILE THICKNESS	.083 INCHES
SPECIAL TECHNOLOGY	PROTEX® SOIL RELEASE

OPTIONAL SPECIAL TECHNOLOGIES	PROSEPT® ANTIMICROBIAL SENTIR® ADVANCED ODOR BLOCKING TREATMENT
-------------------------------	--

PHYSICAL TESTING	FLOORING RADIANT PANEL – (CLASS 1) PILL TEST – (PASSES) SMOKE DENSITY – (LESS THAN 450 FLAMING) STATIC GENERATION – (LESS THAN 3.5 KV)
------------------	---

WARRANTIES	LIFETIME FIBER PERFORMANCE FOR WEAR LIFETIME FIBER PERFORMANCE FOR STATIC LIFETIME STAIN REMOVAL LIFETIME COLORFASTNESS TO LIGHT AND ATMOSPHERIC CONTAMINANTS LIFETIME FOR TUFT BIND STRENGTH (EDGE RAVEL, YARN PULLS, ZIPPERING) LIFETIME AGAINST DELAMINATION LIFETIME DIMENSIONAL STABILITY
------------	--

RECOMMENDED
INSTALLATION METHODS



QUARTER TURN



EF Contract[™]
A DIVISION OF ENGINEERED FLOORS

1502 Coronet Drive
Dalton, Georgia 30720
U.S.A.

800.451.1250
efcontractflooring.com