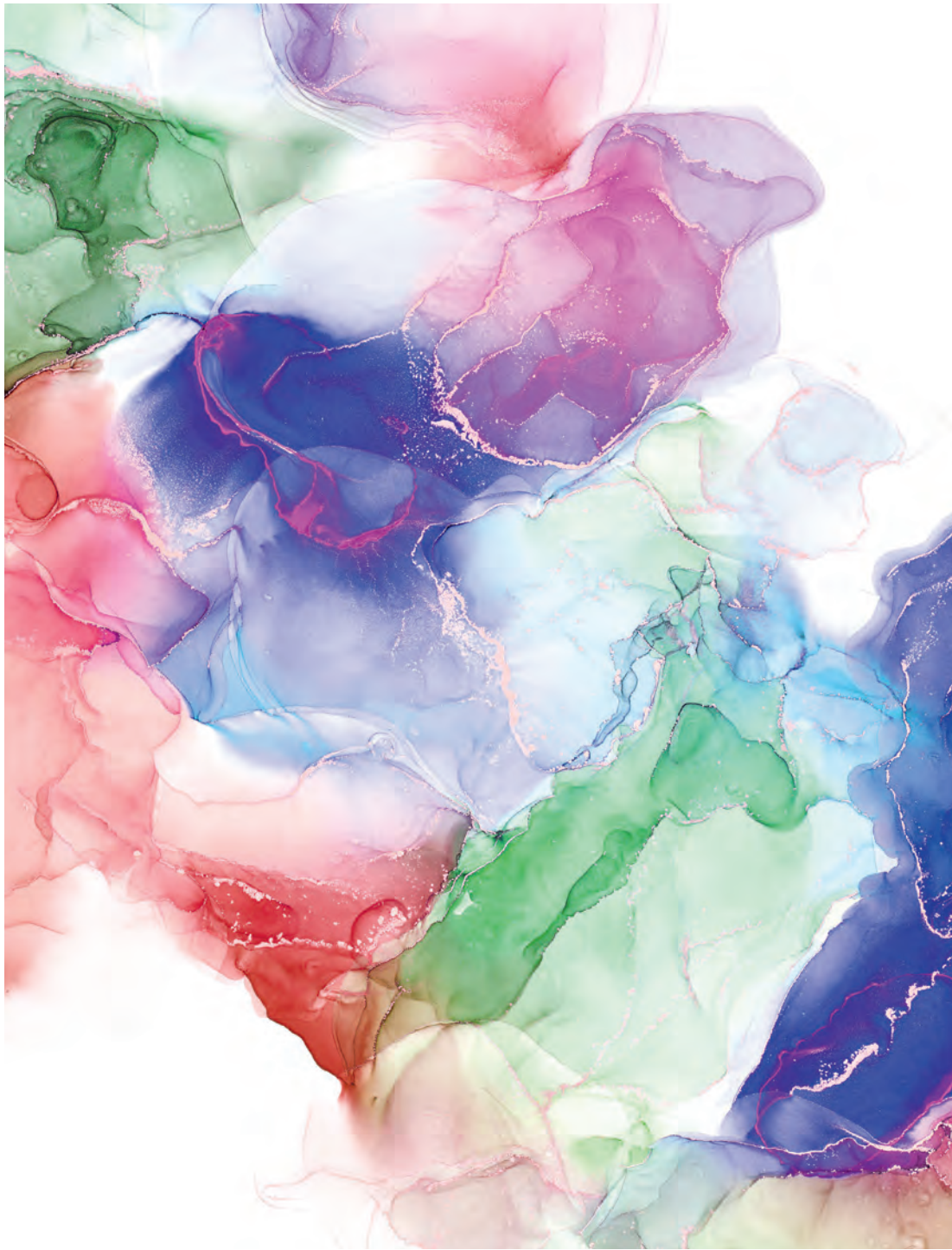


WaterColors

MODULAR CARPET





WaterColors

What mood do you want to create?

Color has its own visual language that influences our perception of a space. Whether you fully embrace the playful side of color that delivers a punchy impact- or like to keep it low-key with sophisticated or earthy hues, WaterColors can help translate your space into your unique statement-making design. Celebrate your creative style with 20 fresh shades in 18x36 and 24x24 tiles - perfect for accents, borders, wayfinding and the complete floor.

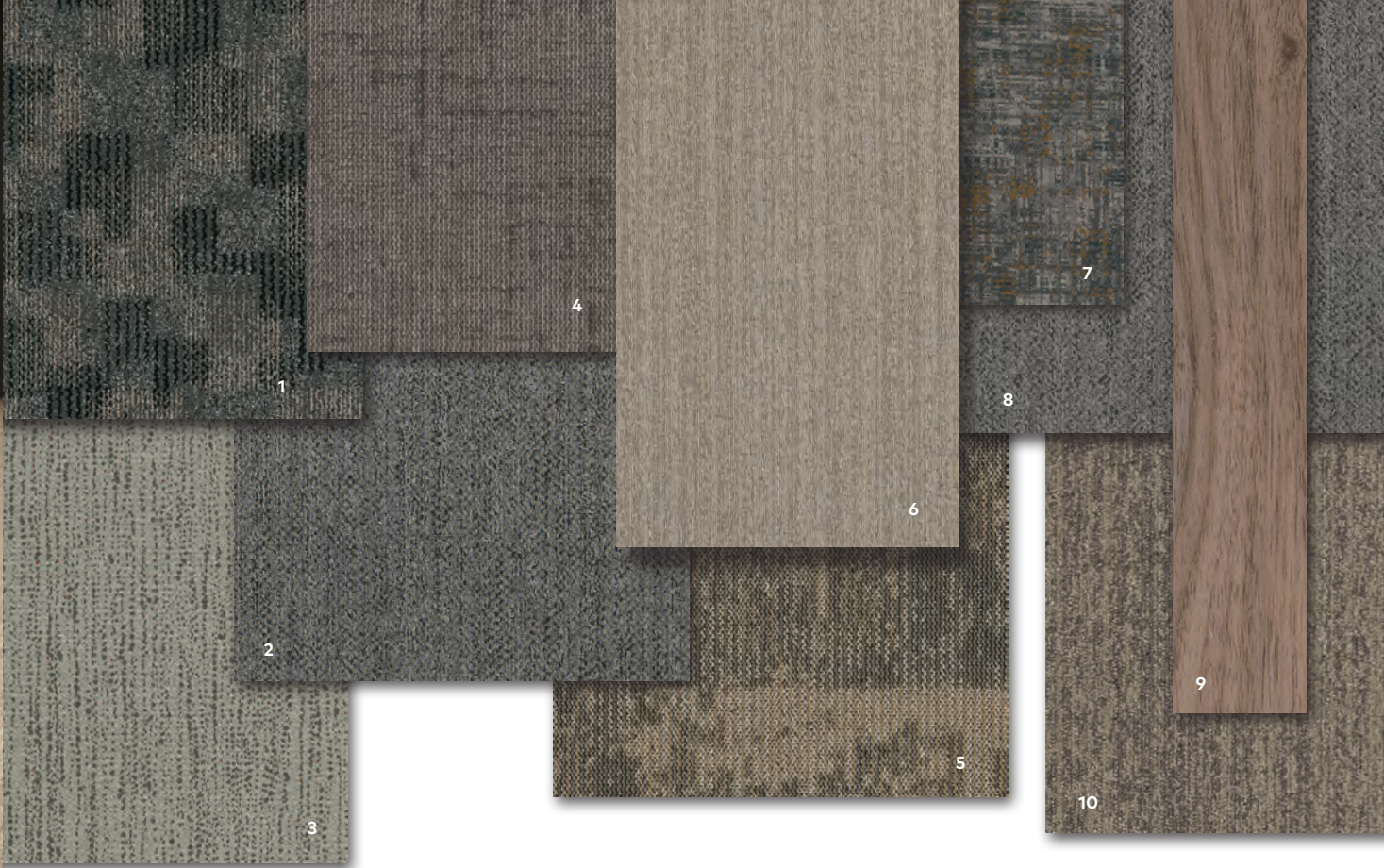




WATERCOLORS - MARS VIOLET - MONOLITHIC | LEAD GRAY - MONOLITHIC | ROSE Madder - MONOLITHIC



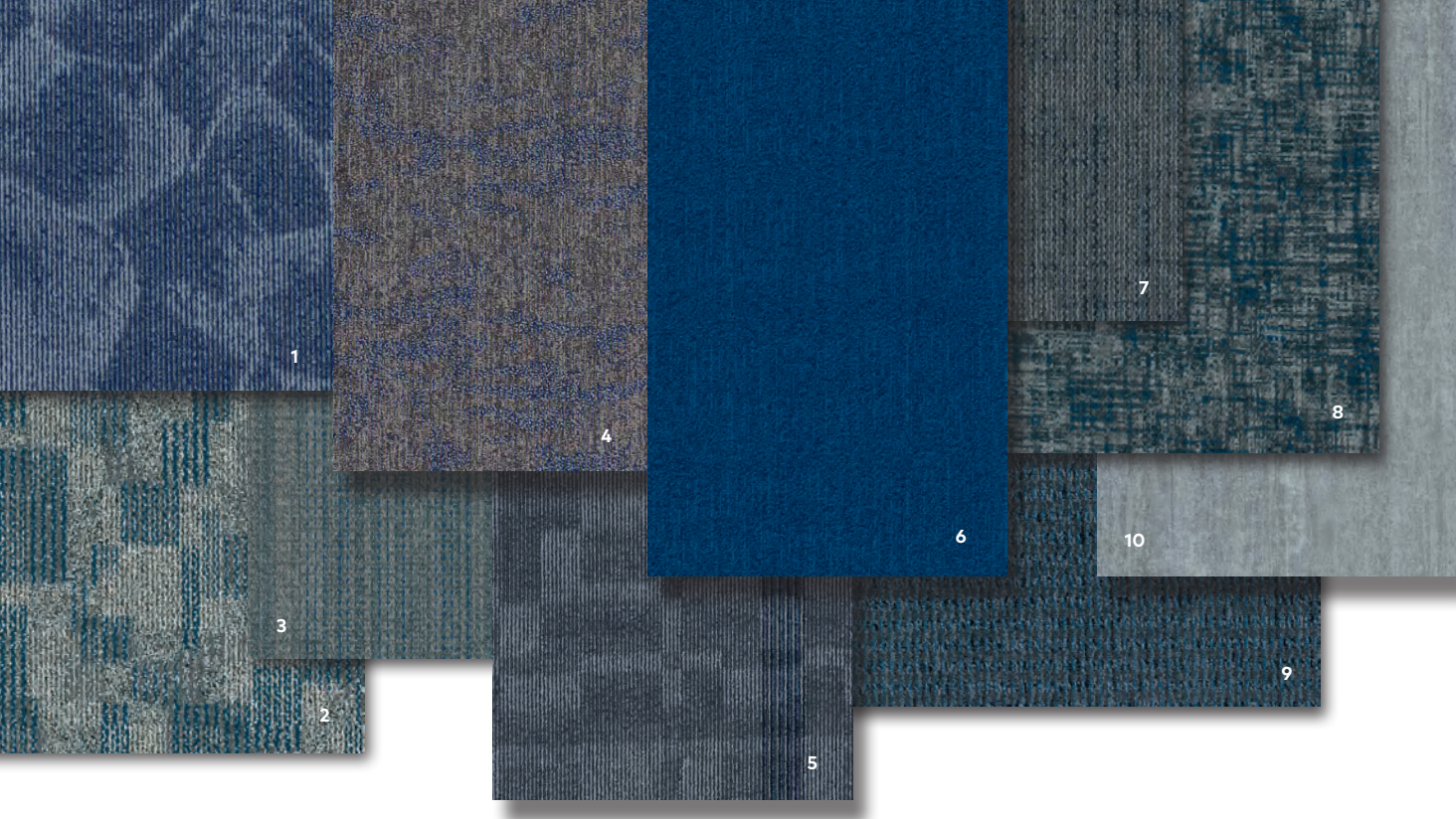




COORDINATING PALETTE

Beyond the beauty of individual products, EF Contract’s flooring **coordinate effortlessly** across all of our product platforms - modular carpet tile, broadloom, LVT and Kinetex textile composite flooring. This offering enables you to blend a range of designs to create **palettes** that meet the demands of each unique space.

1	UP TEMPO - SWING	TEM18	MODULAR
2	PAINTED DESERT - SANDSTONE	PAI16	MODULAR & BROADLOOM
3	CASCADE - SPLASH	CSC24	KINETEX
4	CROSSWALK - ACORN	CWK75	MODULAR & BROADLOOM
5	ARTISAN - SMOKE	ART76	MODULAR
6	WATERCOLORS - GAMBOGE	WTC15	MODULAR
7	INTRIGUE - ENRAPTURE	ITR12	KINETEX
8	PAINTED DESERT - CLAY	PAI14	MODULAR & BROADLOOM
9	WOODLANDS - DANISH TEAK	007	LVT
10	COMMON THREAD - BARK INTEGRATE	CMT76	MODULAR & BROADLOOM



COORDINATING PALETTE

Beyond the beauty of individual products, EF Contract’s flooring **coordinate effortlessly** across all of our product platforms - modular carpet tile, broadloom, LVT and Kinetex textile composite flooring. This offering enables you to blend a range of designs to create **palettes** that meet the demands of each unique space.

1	FRAGMENTS - BLUE TINGE	FRG47	MODULAR
2	UP TEMPO - ANIMATED	TEM44	MODULAR
3	IMMERSE - LUMINOL	IMM44	MODULAR & BROADLOOM
4	SPECTRAL DRIFT - AZURE	SDF45	MODULAR
5	PENNANT - ANILINE	PEN46	MODULAR
6	WATERCOLORS - ULTRAMARINE	WTC47	MODULAR
7	CROSSWALK - COBALT	CWK46	MODULAR & BROADLOOM
8	INTRIGUE - MESMERIZE	ITR45	KINETEX
9	PAINTED HILLS - AZURITE	PHL45	BROADLOOM
10	PLATEAU - ZINC	004	LVT



WATERCOLORS - ULTRAMARINE - MONOLITHIC | SPECTRAL DRIFT - AZURE - PARQUET

WATERCOLORS 24" x 24" AND 18" x 36" MODULAR



WTC11
BONE WHITE



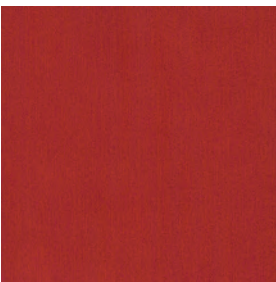
WTC15
GAMBOGE



WTC76
RAW SIENNA



WTC78
UMBER



WTC86
VERMILLION



WTC68
ROSE MADDER



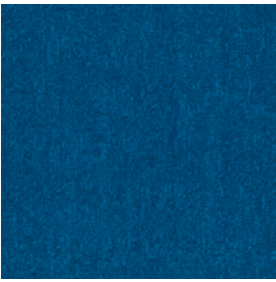
WTC88
SCARLET RED



WTC98
MARS VIOLET



WTC44
CERULEAN



WTC46
LAPIZ



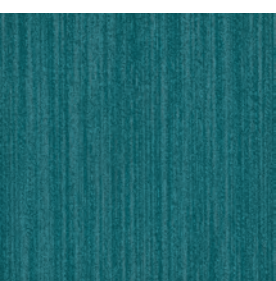
WTC47
ULTRAMARINE



WTC49
DARK COBALT



WTC33
SAP GREEN



WTC37
TURQUOISE



WTC35
CELADON



WTC38
PHTHALO GREEN



WTC51
SMOKE



WTC54
PAYNE'S GREY



WTC56
LEAD GREY



WTC59
SOOT BLACK

SCAN ME!



Scan to order
samples or
check inventory.

PRODUCT DETAILS

Fiber

ENCORE® SD ULTIMA® NYLON
(WITH RECYCLED CONTENT)
Encore SD Ultima is specifically engineered to maximize appearance retention with exceptional color, performance, sustainability and practicality.

Moisture

Are high levels of moisture in your concrete slab causing issues with your project’s floor covering? We can help.

- Nexus Modular Carpet with TileTabs - 99% RH
- Cost-efficient
- Long-term performance
- Straightforward, easy-to-understand Lifetime warranty
- Requires no special floor preparation

Backings

NEXUS® MODULAR
Nexus modular products can be installed in a variety of ways and are performance engineered to be visually appealing. In addition, they are designed to accommodate your long-term flooring budget.

- Contains pre-consumer recycled content and contributes to LEED
- Recyclable through EF Contract's R4 Carpet Reclamation Program

RH/pH Warranty

Warranty: Installed With TileTabs	Lifetime
Warranty: Installed With Commercialon® Premium Adhesive (non-prorated)	Lifetime
Warranty: Installed With Any Other Adhesive	1 year
Max RH, pH Installed Without Commercialon® Sealer	90% RH, pH 9
Max RH, pH Installed With Commercialon® Premium Sealer	99% RH, pH 11 (TileTabs) — 97% RH, pH 11 (Commercialon)
Max RH, pH: Installed with Commercialon® High Moisture Adhesive	99% RH, pH12

Adhesives

COMMERCIALON® PREMIUM MODULAR ADHESIVE
A high-strength acrylic latex-based carpet adhesive specifically formulated for bonding modular PVC backed carpet to the floor. This premium adhesive is for use with all Nexus Modular Tile products. This adhesive is guaranteed for the life of the installation when used in accordance with the EF Contract Carpet Installation Handbook. Commercialon Premium Modular Adhesive meets the CRI Low-VOC Emission Criteria. Commercialon Premium Modular Adhesive is nontoxic, has ultra-low odor and is antimicrobial in the dry state.

Optional

TILETABS
High Tack Adhesive Tabs (modular only)
COMMERCIALON® HIGH MOISTURE ADHESIVE

Technologies

PROTEX® SOIL RELEASE
ProTex is a proprietary soil release technology that is applied and bonded to the pile fiber to impede soiling and to improve cleanability. It is standard on all EF Contract flooring products

Optional

PROSEPT® ANTIMICROBIAL
SENTIR® ADVANCED ODOR-BLOCKING TECHNOLOGY



©2023 Engineered Floors LLC - This unique design is protected under the U.S. Copyright Act of 1976. Any unauthorized copying or duplication of this design constitutes copyright infringement in violation of federal law.

Due to the unique visual characteristics of modular carpets, pattern repeats and pattern run-off seams may appear more noticeable than in broadloom carpets. Such visual characteristics do not constitute a manufacturing defect, and as such, should be considered when selecting modular carpet and its installation. These photographs are representations of the installation for this modular product. Your modular installation may look different than these photos depending upon individual tile placement, lighting and overall space layout, including furnishings. Final tile placement and the resulting visual is thus the customer's, and not EF Contract's, responsibility.

To learn more, visit:
EFCONTRACT.COM

PRODUCT DETAILS

STYLE	WATERCOLORS TWTC	WATERCOLORS TWTC
CONSTRUCTION	TEXTURED LOOP	TEXTURED LOOP
FIBER TYPE	100% ENCORE® SD ULTIMA® NYLON	100% ENCORE® SD ULTIMA® NYLON
DYE METHOD	SOLUTION DYED	SOLUTION DYED
OUNCE WEIGHT	22.0 OZ./SY (746 GRAMS/M2)	22.0 OZ./SY (746 GRAMS/M2)
GAUGE	1/10 (3.94 ROWS/CM)	1/10 (3.94 ROWS/CM)
BACKING	NEXUS® MODULAR	NEXUS® MODULAR
DENSITY	9,290	9,290
FINISHED PILE THICKNESS	0.093 INCHES	0.093 INCHES
SIZE	24" X 24" (61.0 CM X 61.0 CM)	18" X 36" (45.72 CM X 91.44 CM)
PATTERN REPEAT	N/A	N/A
TOTAL THICKNESS	0.19 INCHES (0.48CM)	0.19 INCHES (0.48CM)
SPECIAL TECHNOLOGY	PROTEX® ANTI-SOIL TREATMENT	PROTEX® ANTI-SOIL TREATMENT
OPTIONAL SPECIAL TECHNOLOGIES	PROSEPT® ANTIMICROBIAL SENTIR® ADVANCED ODOR BLOCKING TREATMENT	PROSEPT® ANTIMICROBIAL SENTIR® ADVANCED ODOR BLOCKING TREATMENT
PHYSICAL TESTING	FLOORING RADIANT PANEL – (CLASS 1) PILL TEST – (PASSES) SMOKE DENSITY – (LESS THAN 450 FLAMING) STATIC GENERATION – (LESS THAN 3.5 KV) ADA COMPLIANCE (COMPLIANT FOR ACCESSIBLE ROUTES)	FLOORING RADIANT PANEL – (CLASS 1) PILL TEST – (PASSES) SMOKE DENSITY – (LESS THAN 450 FLAMING) STATIC GENERATION – (LESS THAN 3.5 KV) ADA COMPLIANCE (COMPLIANT FOR ACCESSIBLE ROUTES)
FIBER WARRANTY	LIFETIME FIBER PERFORMANCE FOR WEAR LIFETIME FIBER PERFORMANCE FOR STATIC LIFETIME STAIN REMOVAL LIFETIME COLORFASTNESS TO LIGHT AND ATMOSPHERIC CONTAMINANTS	LIFETIME FIBER PERFORMANCE FOR WEAR LIFETIME FIBER PERFORMANCE FOR STATIC LIFETIME STAIN REMOVAL LIFETIME COLORFASTNESS TO LIGHT AND ATMOSPHERIC CONTAMINANTS
BACKING WARRANTY	LIFETIME FOR TUFT BIND STRENGTH (EDGE RAVEL, YARN PULLS, ZIPPERING) LIFETIME AGAINST DELAMINATION LIFETIME DIMENSIONAL STABILITY	LIFETIME FOR TUFT BIND STRENGTH (EDGE RAVEL, YARN PULLS, ZIPPERING) LIFETIME AGAINST DELAMINATION LIFETIME DIMENSIONAL STABILITY
RECOMMENDED INSTALLATION METHODS	<div><div><div>↑↑→</div><div>→↑↑</div></div><div>QUARTER TURN</div><div><div>↑↑↑</div><div>↑↑↑</div></div><div>ASHLAR</div><div><div>↑↑↑↑</div><div>↑↑↑↑</div></div><div>BRICK</div><div><div>↑↑↑</div><div>↑↑↑</div></div><div>MONOLITHIC</div><div><div>↑↑↑</div><div>↑↑↑</div></div><div>ASHLAR</div><div><div>↑↑↑</div><div>↑↑↑</div></div><div>BASKETWEAVE</div><div><div>↑↑↑</div><div>↑↑↑</div></div><div>HERRINGBONE</div><div><div>↑↑↑</div><div>↑↑↑</div></div><div>PARQUET</div><div><div>↑↑↑</div><div>↑↑↑</div></div><div>BRICK</div></div>	



PO Box 2207
Dalton, Georgia 30722
U.S.A.

800.451.1250
efcontract.com
FX4123M02