

Painted Desert + Painted Hills

ROLLS | MODULAR CARPET

QUICKSHIP OPTIONS





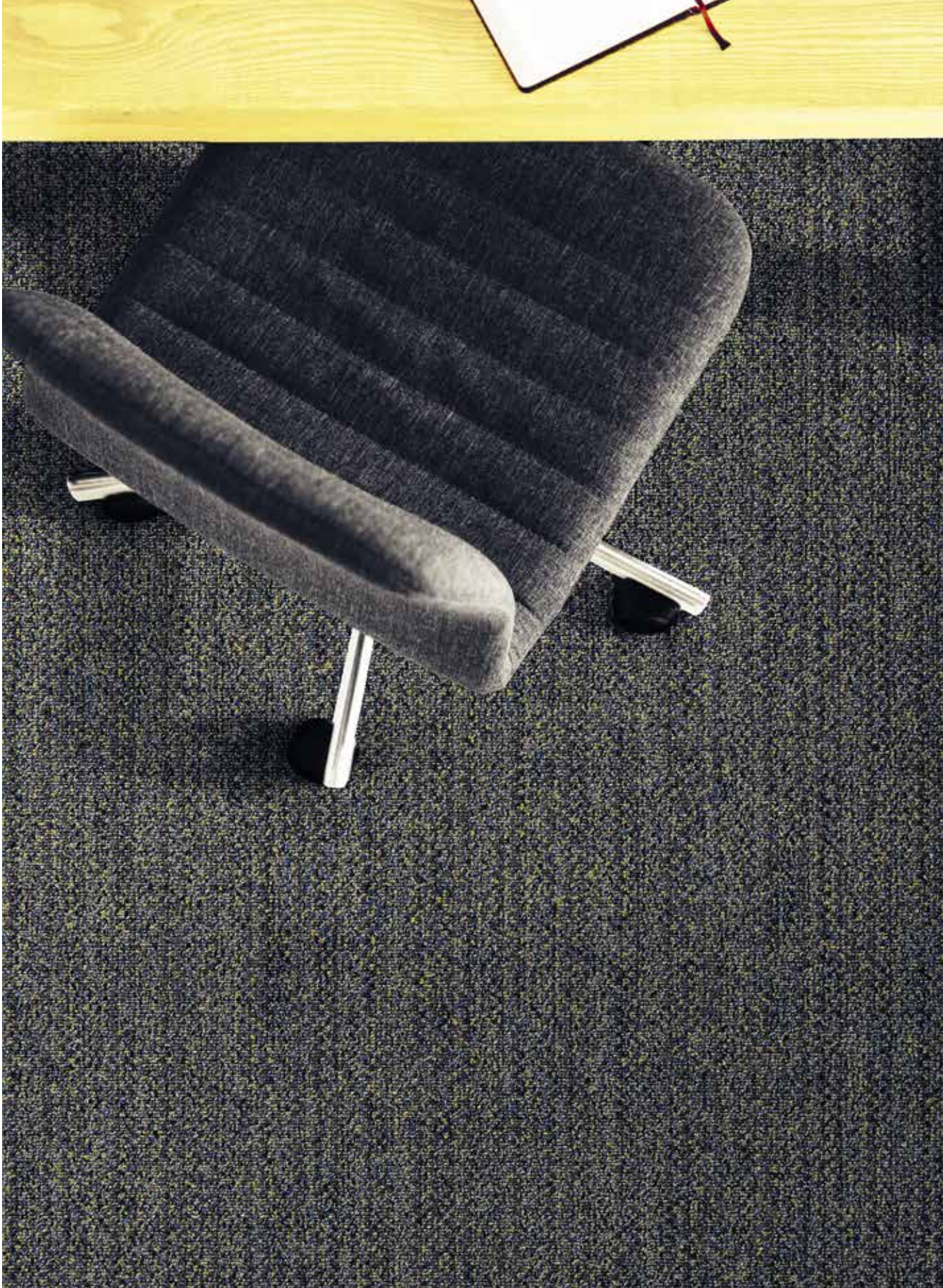
Painted Desert + Painted Hills

The Arizona desert is marked by a stunning expanse of layered striations revealing striking sunset colors intermingled with warm earth tones. Taking this as our inspiration, our style Painted Desert, captures the drama and beauty of this landscape through careful blending of color, luster and pattern.

Oregon's Painted Hills are a breathtaking panorama of brilliant color juxtaposed against clear sky. Time and weather have revealed swathes of ochre, vermillion and madder in this otherworldly terrain. Our style Painted Hills, draws its inspiration from this undulating landscape resulting in a beautifully crafted carpet.







ROLLS | 24" X 24" MODULAR

PAINTED DESERT



PAI14 | CLAY



PAI16 | SANDSTONE
QUICKSHIP - TILE ONLY



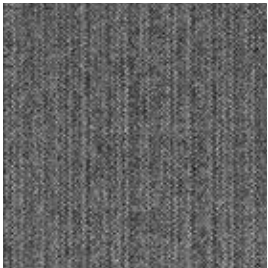
PAI35 | SLATE



PAI36 | PERIDOT



PAI45 | AZURITE
QUICKSHIP - TILE ONLY



PAI54 | QUARTZ
QUICKSHIP - TILE ONLY



PAI56 | SHALE



PAI58 | BASALT
QUICKSHIP - TILE ONLY



PAI85 | IRON OXIDE

QS
OPTIONS



10 business days or less for orders up to 1,500 square yards on standard backing systems.

Samples & Customer Service
800-451-1250

SCAN ME!



Scan to order samples or check inventory.



ROLLS



PHL14 | CLAY



PHL16 | SANDSTONE



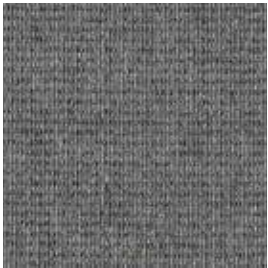
PHL35 | SLATE



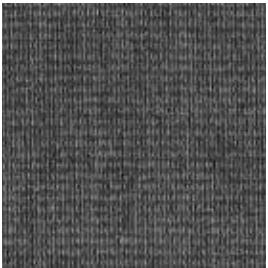
PHL36 | PERIDOT



PHL45 | AZURITE



PHL54 | QUARTZ



PHL56 | SHALE



PHL58 | BASALT



PHL85 | IRON OXIDE

PAINTED HILLS

SCAN ME!



Scan to order
samples or
check inventory.



COORDINATING PALETTES

1	CONTEXT - SITUATION	CNT57	BROADLOOM
2	VESTIGE - ASHEN	VES14	KINETEX
3	WOODLANDS - OAKWOOD	003	LVT
4	PAINTED HILLS - PERIDOT	PHL36	BROADLOOM
5	TERRAIN PARK - RIVERSTONE	TER55	MODULAR
6	UP TEMPO - PULSE	TEM15	MODULAR
7	VEIL - OVERCAST	VLT57	MODULAR
8	PAINTED DESERT - SANDSTONE	PAI16	MODULAR + BROADLOOM
9	MELANGE - URBAN	004	LVT
10	COMMON THREAD - PEWTER RAPPORT	CMT51	MODULAR + BROADLOOM
11	DART - FLY	DAR77	KINETEX
12	BATISTE II - SATEEN	BTT53	MODULAR + BROADLOOM

Fiber

ENCORE® SD ULTIMA NYLON
(WITH RECYCLED CONTENT)

Specifically engineered to maximize appearance retention with exceptional color, performance, sustainability, and practicality.

Backings

NEXUS® MODULAR

Nexus modular products can be installed in a variety of ways and are performance engineered to be visually appealing. In addition, they are designed to accommodate your long-term flooring budget.

- Contains pre-consumer recycled content and contributes to LEED
- Recyclable through EF Contract's R4 Carpet Reclamation Program

PREMIERBAC® PLUS BACKING

PremierBac® Plus is standard on broadloom products and provides superior construction to ensure solid dimensional stability for broadloom carpets.

- Stretch-in or glue-down installation
- Manufactured in an ISO 14001 certified facility
- Contains pre-consumer recycled content and contributes to LEED
- Recyclable through the EF Contract R4 Carpet Reclamation Program

Moisture

Are high levels of moisture in your concrete slab causing issues with your project's floor covering? We can help.

- Nexus Modular Carpet with TileTabs - 99% RH
- Cost-efficient
- Long-term performance
- Straightforward, easy-to-understand Lifetime warranty
- Requires no special floor preparation

RH/pH Warranty

Warranty: Installed With TileTabs	Lifetime
Warranty: Installed With Commercialon® Premium Adhesive (non-prorated)	Lifetime
Warranty: Installed With Any Other Adhesive	1 year
Max RH, pH Installed Without Commercialon® Sealer	90% RH, pH 9
Max RH, pH Installed With Commercialon® Premium Sealer	99% RH, pH 11 (TileTabs) — 97% RH, pH 11 (Commercialon)

Adhesives

COMMERCIALON® PREMIUM MODULAR ADHESIVE

A high-strength acrylic latex-based carpet adhesive specifically formulated for bonding modular PVC backed carpet to the floor. This premium adhesive is for use with all Nexus Modular Tile products. This adhesive is guaranteed for the life of the installation when used in accordance with the EF Contract Carpet Installation Handbook. Commercialon Premium Modular Adhesive meets the CRI Low-VOC Emission Criteria. Commercialon Premium Modular Adhesive is nontoxic, has ultra-low odor and is antimicrobial in the dry state.

COMMERCIALON® PREMIUM CARPET ADHESIVE

Formulated for the most demanding interior carpet installations. It forms a powerful bond with stiff and heavy backed commercial carpets directly over approved substrates. It is quick setting, features antimicrobial protection and can be removed easily. This solvent free adhesive is also low in odor, meeting the low VOC emission criteria of the CRI Green Label Plus Indoor Air Quality. Commercialon Premium Adhesive is for use with broadloom backing systems.

Optional

TILETABS

High Tack Adhesive Tabs (modular only)

Technologies

PROTEX® SOIL RELEASE

ProTex is a proprietary soil release technology that is applied and bonded to the pile fiber to impede soiling and to improve cleanability. It is standard on all EF Contract flooring products.

Optional

PROSEPT® ANTIMICROBIAL

ProSept is a safe broad spectrum antimicrobial that protects the carpet from bacterial and fungal growth.

SENTIR® ADVANCED ODOR-BLOCKING TECHNOLOGY

Sentir is a breakthrough odor-blocking technology for EF Contract broadloom and modular commercial carpet. This self-renewing treatment is designed to control or eliminate offensive odors associated with indoor environments and is particularly effective on odor-bearing spills.

©2021 Engineered Floors LLC - This unique design is protected under the U.S. Copyright Act of 1976. Any unauthorized copying or duplication of this design constitutes copyright infringement in violation of federal law.

Due to the unique visual characteristics of modular carpets, pattern repeats and pattern run-off seams may appear more noticeable than in broadloom carpets. Such visual characteristics do not constitute a manufacturing defect, and as such, should be considered when selecting modular carpet and its installation. These photographs are representations of the installation for this modular product. Your modular installation may look different than these photos depending upon individual tile placement, lighting and overall space layout, including furnishings. Final tile placement and the resulting visual is thus the customer's, and not EF Contract's, responsibility.

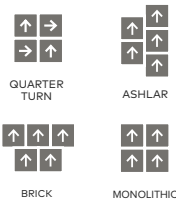
To learn more, visit:
EFCONTRACTFLOORING.COM



PRODUCT DETAILS

STYLE	PAINTED DESERT TPAI
CONSTRUCTION	TEXTURED LOOP PATTERN
FIBER TYPE	100% ENCORE® SD ULTIMA NYLON (WITH RECYCLED CONTENT)
DYE METHOD	SOLUTION DYED
OUNCE WEIGHT	16 OZ / SQUARE YARD
GAUGE	1/10 IN
BACKING	NEXUS® MODULAR
DENSITY	10,473
FINISHED PILE THICKNESS	0.055 INCHES
SIZE	24" X 24"
PATTERN REPEAT	N/A
TOTAL THICKNESS	0.219 INCHES
SPECIAL TECHNOLOGY	PROTEX® SOIL RELEASE
OPTIONAL SPECIAL TECHNOLOGIES	PROSEPT® ANTIMICROBIAL SENTIR® ADVANCED ODOR BLOCKING TREATMENT
PHYSICAL TESTING	FLOORING RADIANT PANEL – (CLASS 1) PILL TEST – (PASSES) SMOKE DENSITY – (LESS THAN 450 FLAMING) STATIC GENERATION – (LESS THAN 3.5 KV)
FIBER WARRANTY	LIFETIME FIBER PERFORMANCE FOR WEAR LIFETIME FIBER PERFORMANCE FOR STATIC LIFETIME STAIN REMOVAL LIFETIME COLORFASTNESS TO LIGHT AND ATMOSPHERIC CONTAMINANTS
BACKING WARRANTY	LIFETIME FOR TUFT BIND STRENGTH (EDGE RAVEL, YARN PULLS, ZIPPERING) LIFETIME AGAINST DELAMINATION LIFETIME DIMENSIONAL STABILITY

RECOMMENDED
INSTALLATION METHODS



PAINTED DESERT PAI	PAINTED HILLS PHL
TEXTURED LOOP PATTERN	TEXTURED LOOP PATTERN
100% ENCORE® SD ULTIMA NYLON (WITH RECYCLED CONTENT)	100% ENCORE® SD ULTIMA NYLON (WITH RECYCLED CONTENT)
SOLUTION DYED	SOLUTION DYED
16 OZ / SQUARE YARD	18 OZ / SQUARE YARD
1/10 IN	1/10 IN
PREMIERBAC® PLUS	PREMIERBAC® PLUS
8,727	9,290
0.099 INCHES	0.093 INCHES
12 FOOT ROLL	12 FOOT ROLL
76"W X 85.23"L	0.4"W X 0.75"L
0.259 INCHES	0.249 INCHES
PROTEX® SOIL RELEASE	PROTEX® SOIL RELEASE
PROSEPT® ANTIMICROBIAL SENTIR® ADVANCED ODOR BLOCKING TREATMENT	PROSEPT® ANTIMICROBIAL SENTIR® ADVANCED ODOR BLOCKING TREATMENT
FLOORING RADIANT PANEL – (CLASS 1) PILL TEST – (PASSES) SMOKE DENSITY – (LESS THAN 450 FLAMING) STATIC GENERATION – (LESS THAN 3.5 KV)	FLOORING RADIANT PANEL – (CLASS 1) PILL TEST – (PASSES) SMOKE DENSITY – (LESS THAN 450 FLAMING) STATIC GENERATION – (LESS THAN 3.5 KV)
LIFETIME FIBER PERFORMANCE FOR WEAR LIFETIME FIBER PERFORMANCE FOR STATIC LIFETIME STAIN REMOVAL LIFETIME COLORFASTNESS TO LIGHT AND ATMOSPHERIC CONTAMINANTS	LIFETIME FIBER PERFORMANCE FOR WEAR LIFETIME FIBER PERFORMANCE FOR STATIC LIFETIME STAIN REMOVAL LIFETIME COLORFASTNESS TO LIGHT AND ATMOSPHERIC CONTAMINANTS
10 YEAR FOR TUFT BIND STRENGTH (EDGE RAVEL, YARN PULLS, ZIPPERING) 10 YEAR AGAINST DELAMINATION	10 YEAR FOR TUFT BIND STRENGTH (EDGE RAVEL, YARN PULLS, ZIPPERING) 10 YEAR AGAINST DELAMINATION



12' ROLL



12' ROLL





PO Box 2207
Dalton, Georgia 30722
U.S.A.

800.451.1250
efcontractflooring.com
MX1221M05