

kinetex[®]

Textile Composite Flooring

EF Contract's award-winning Kinetex textile composite flooring offers a high-performing solution for interior stairs of all types.

The innovative construction of Kinetex offers:

SAFETY



While wet, Kinetex has a higher slip-coefficient when compared to a wet hard surface — which offers a much safer area for walking and standing.

It is the only floor covering of its kind certified by the National Floor Safety Institute as a high traction flooring.

Kinetex has the potential to absorb energy and reduce repetitive foot stress injuries.

DURABILITY

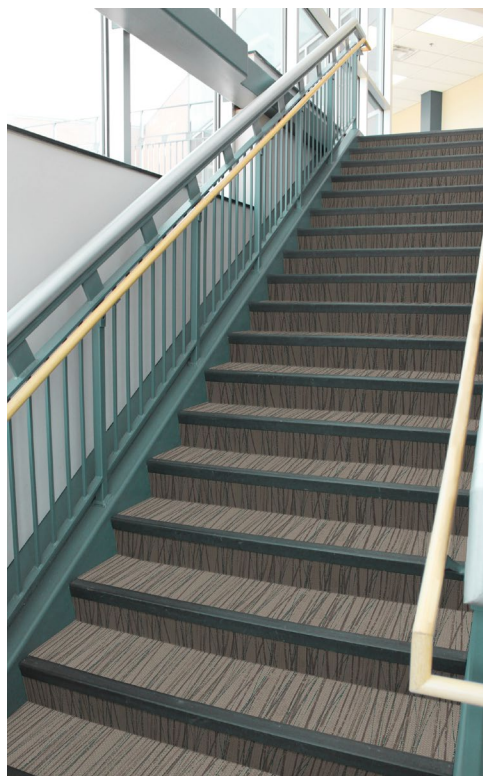
It features unsurpassed durability with-standing over 5 million foot traffic events.

EASE OF MAINTENANCE

Kinetex dries faster than carpet — perfect for cleaning while occupied. It resists the most challenging stain agents and is easily sanitized and spot cleaned.

800.451.1250
efcontractflooring.com

STAIRWAY FLOORING SOLUTIONS



For installation of Kinetex on stairs, please review Kinetex Installation Instructions at efcontractflooring.com.

Requirements for installation include:

- Use of Kinetex Adhesive, PreFix or SRT doubled-side foam tape for Kinetex modular flooring.
- Use of stair nosing and the nosing manufacturers adhesive, or contact adhesive to secure the nosing material.

 **EF Contract**[®]
A DIVISION OF ENGINEERED FLOORS

The Kinetex Installation Instructions and Kinetex Maintenance Instructions are available at efcontractflooring.com. For further questions or additional information, EFC Customer Relations can be reached at 800.15.1250.

INSTALLATION PROCEDURES FOR KINETEX MODULES

Make sure you inspect modules prior to installation. No claims will be honored if modules are installed with visible defects. Read all instructions prior to beginning installation.

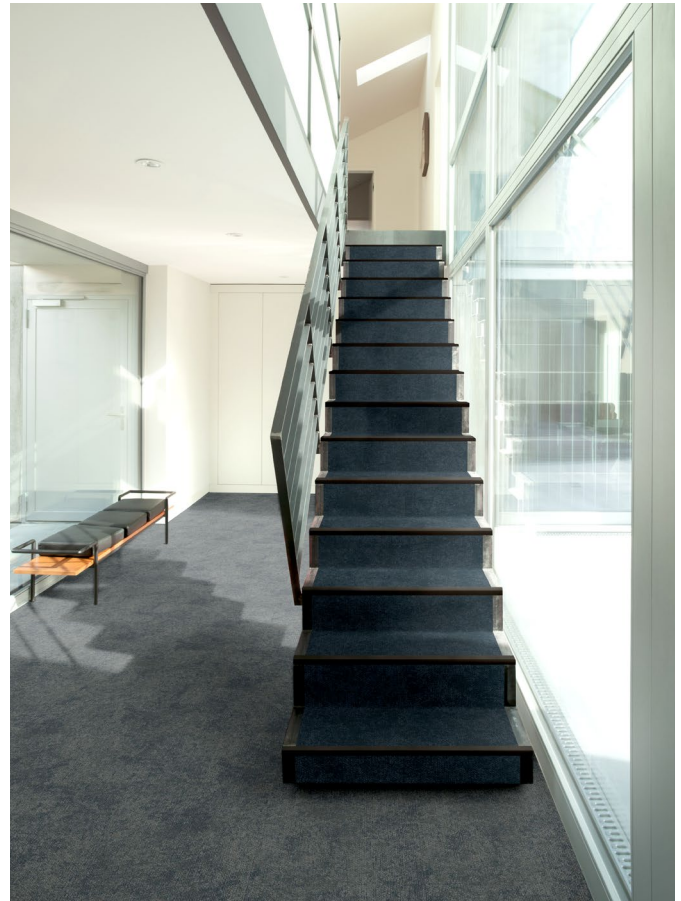
Follow approved installation method(s) for each specific product. See full Kinetex instructions at efcontractflooring.com for site and modular material conditioning, surface preparation and subfloor preparation.

KINETEX INSTALLATION ON STAIRS

For installation of Kinetex on stairs, single or double undercut stair nosing is required. Since Kinetex will be flat to both the tread and riser, Kinetex Modular Adhesive, PreFix or our SRT double-sided foam tape is required.

Kinetex Spread Adhesive – When using full spread Kinetex Adhesive, install modules on steps and risers, inserting the tile edge and the top of the riser edge of each module into the vinyl undercut. The nosing design must have a slot to protect the edge of the Kinetex modules on both tread and riser. Secure the rubber/vinyl nosing with contact adhesive or manufacturer recommended adhesive. The riser material should receive an application of Kinetex Adhesive on both the riser and the backside of the module in order to achieve a secure bond. The spread rate for Kinetex Adhesive is approximately 900 square feet per four-gallon bucket and should be applied full spread to both the treads and the risers, using a 1/16" x 1/32" x 1/32" U-notched trowel. Allow to dry until transparent or adhesive does not transfer to finger when touched.

PreFix Pre-Applied Adhesive - EF Contract's PreFix features pre-applied adhesive for a peel and stick installation. PreFix Primer (included) must be applied to the stair treads and risers, resulting in a dust free surface. The nosing design must have a slot to protect the edge of the Kinetex modules on both tread and riser. Secure the rubber/vinyl nosing with contact adhesive or manufacturer's adhesive.



SRT Tape – EF Contract's SRT Foam Tape can be used to secure Kinetex modular floor to the treads and risers. PreFix Primer, Mapei Primer L or Mapei Primer T must be applied to the stair treads and risers, resulting in a dust free and clean surface to accept the SRT. Secure the rubber/vinyl nosing with contact adhesive or manufacturer's adhesive.

COMPLETING THE INSTALLATION

Restrict traffic on stairs for 6-8 hours following the installation to allow adhesive to develop full strength.

FOLLOWING THE INSTALLATION

Please refer to the Kinetex Adhesive instructions for more specific and complete details. However, please note the following requirements:

1. The new installation of Kinetex flooring is not to be cleaned for 48 hours utilizing any wet or chemical cleaning process.
2. The indoor temperature should never fall below 55° F, regard less of the age of the installation.

NOTE: These installation recommendations are made for the experienced installer. Adherence to these procedures will result in a quality installation. Any questions concerning these recommendations or any special situation encountered should be directed to the EF Contract Customer Relations Department.

