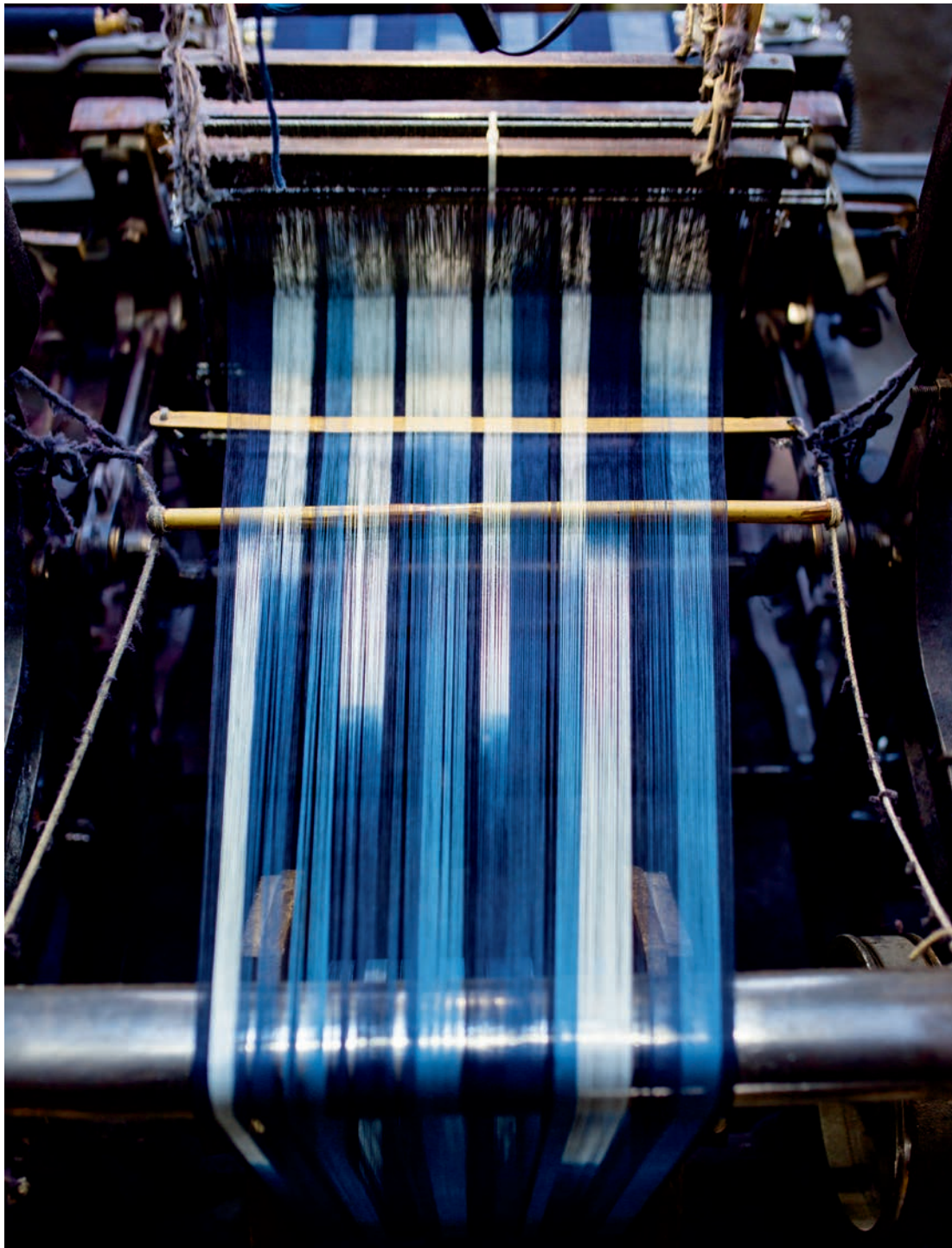


Kasuri + Kimono

MODULAR CARPET





Kasuri + Kimono

Beautifully nuanced with Japanese influence, Kasuri and Kimono speak to the rich heritage of traditional textiles. Using proprietary yarn styling to emulate traditional dyeing techniques, softened and blurred motifs are revealed. These styles embrace the elegant simplicity of texture and minimalist pattern and are available in 9 nature inspired colorways in 18" x 36" tiles that provide an understated, peaceful modern interior.

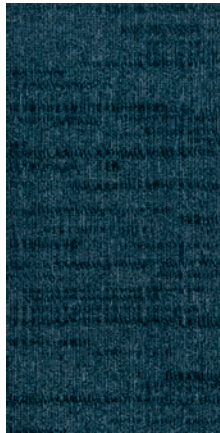




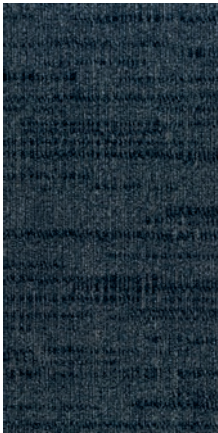


18" x 36" MODULAR

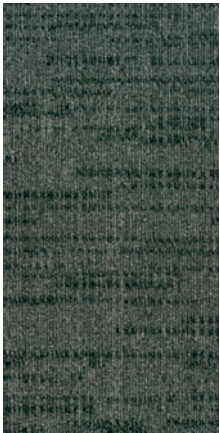
KASURI



KAS46
WOOL



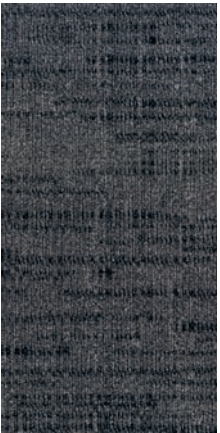
KAS48
KON



KAS36
MIDORI



KAS56
KURO



KAS54
FERROUS



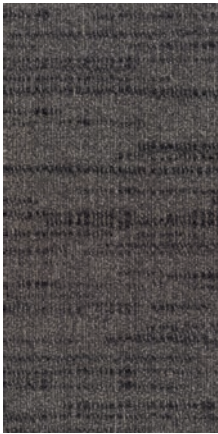
KAS58
SOOT



KAS52
MIST



KAS24
HUSK



KAS76
BUCKTHORN

SCAN ME!



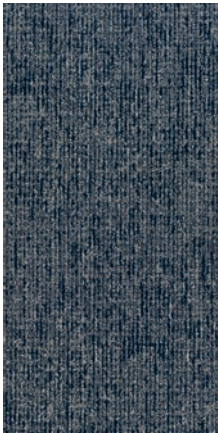
Scan to order
samples or
check inventory.

18" x 36" MODULAR

KIMONO



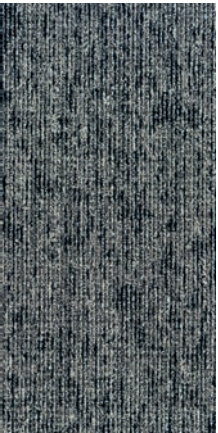
KMO47
MIZU



KMO45
INDIGO



KMO33
GREEN TEA



KMO55
SHIRO



KMO53
CARBON



KMO59
CATALPA



KMO51
SILK



KMO23
BAMBOO



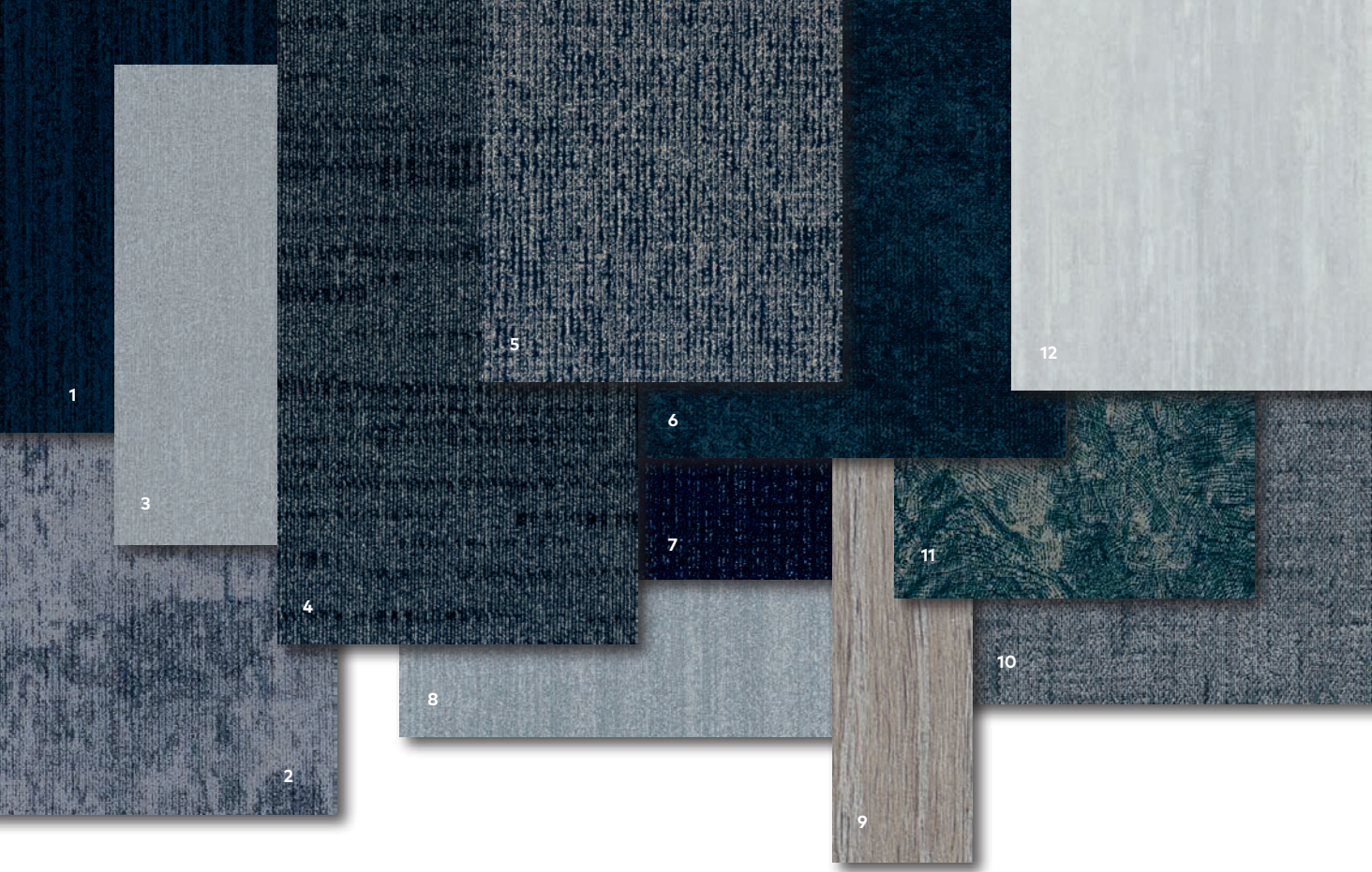
KMO75
CUTCH

SCAN ME!



Scan to order
samples or
check inventory.





COORDINATING PALETTE

Beyond the beauty of individual products, EF Contract’s flooring **coordinate effortlessly** across all of our product platforms - modular carpet tile, broadloom, LVT and Kinetex textile composite flooring. This offering enables you to blend a range of designs to create **palettes** that meet the demands of each unique space.

1	WATERCOLORS - DARK COBALT	WTC49	MODULAR
2	ESPRIT - FRENCH BLUE	ESP45	MODULAR
3	WATERCOLORS - SMOKE	WTC51	MODULAR
4	KASURI - KON	KAS48	MODULAR
5	KIMONO - INDIGO	KMO45	MODULAR
6	VESTIGE - COBALT	VES49	KINETEX
7	BATISTE MODERNE - BLEU MARINE	BTM49	MODULAR + BROADLOOM
8	WATERCOLORS - PAYNE’S GRAY	WTC54	MODULAR
9	WOODLANDS - SILVER ASH	009	LVT
10	CROSSWALK - STEEL	CWK56	MODULAR + BROADLOOM
11	IMPRINT - CADET	IMP47	KINETEX
12	PLATEAU - ACIER	001	LVT



KASURI - KON - ASHLAR - KIMONO - INDIGO - ASHLAR - PLATEAU - ACIER - 1/2 DROP

PRODUCT DETAILS

Fiber

100% ENCORE® SD ULTIMA® NYLON
(WITH RECYCLED CONTENT)
Encore SD Ultima is specifically engineered to maximize appearance retention with exceptional color, performance, sustainability and practicality.

Moisture

Are high levels of moisture in your concrete slab causing issues with your project’s floor covering? We can help.

- Nexus Modular Carpet with TileTabs - 99% RH
- Cost-efficient
- Long-term performance
- Straightforward, easy-to-understand Lifetime warranty
- Requires no special floor preparation

Backings

NEXUS® MODULAR
Nexus modular products can be installed in a variety of ways and are performance engineered to be visually appealing. In addition, they are designed to accommodate your long-term flooring budget.

- Contains pre-consumer recycled content and contributes to LEED
- Recyclable through EF Contract's R4 Carpet Reclamation Program

Warranty: Installed With TileTabs	Lifetime
Warranty: Installed With Commercialon® Premium Adhesive (non-prorated)	Lifetime
Warranty: Installed With Any Other Adhesive	1 year
Max RH, pH Installed Without Commercialon® Sealer	90% RH, pH 9
Max RH, pH Installed With Commercialon® Premium Sealer	99% RH, pH 11 (TileTabs) — 97% RH, pH 11 (Commercialon)
Max RH, pH Installed With Commercialon® High Moisture Adhesive	99% RH, pH 12

Adhesives

COMMERCIALON® PREMIUM MODULAR ADHESIVE
A high-strength acrylic latex-based carpet adhesive specifically formulated for bonding modular PVC backed carpet to the floor. This premium adhesive is for use with all Nexus Modular Tile products. This adhesive is guaranteed for the life of the installation when used in accordance with the EF Contract Carpet Installation Handbook. Commercialon Premium Modular Adhesive meets the CRI Low-VOC Emission Criteria. Commercialon Premium Modular Adhesive is nontoxic, has ultra-low odor and is antimicrobial in the dry state.

Optional

TILETABS
High Tack Adhesive Tabs (modular only)
COMMERCIALON® HIGH MOISTURE ADHESIVE

Technologies

PROTEX® SOIL RELEASE
ProTex is a proprietary soil release technology that is applied and bonded to the pile fiber to impede soiling and to improve cleanability. It is standard on all EF Contract flooring products

Optional

PROSEPT® ANTIMICROBIAL
SENTIR® ADVANCED ODOR-BLOCKING TECHNOLOGY
COMMERCIALON® HIGH MOISTURE ADHESIVE



©2023 Engineered Floors LLC - This unique design is protected under the U.S. Copyright Act of 1976. Any unauthorized copying or duplication of this design constitutes copyright infringement in violation of federal law.

Due to the unique visual characteristics of modular carpets, pattern repeats and pattern run-off seams may appear more noticeable than in broadloom carpets. Such visual characteristics do not constitute a manufacturing defect, and as such, should be considered when selecting modular carpet and its installation. These photographs are representations of the installation for this modular product. Your modular installation may look different than these photos depending upon individual tile placement, lighting and overall space layout, including furnishings. Final tile placement and the resulting visual is thus the customer's, and not EF Contract's, responsibility.

To learn more, visit:
EFCONTRACT.COM

PRODUCT DETAILS

STYLE	KASURI TKAS	KIMONO TKMO
CONSTRUCTION	PATTERNED LOOP	PATTERNED LOOP
FIBER TYPE	100% ENCORE® SD ULTIMA® NYLON (WITH RECYCLED CONTENT)	100% ENCORE® SD ULTIMA® NYLON (WITH RECYCLED CONTENT)
DYE METHOD	SOLUTION DYED	SOLUTION DYED
OUNCE WEIGHT	24 OZ / SQUARE YARD	24 OZ / SQUARE YARD
GAUGE	1/12 IN	1/12 IN
BACKING	NEXUS® MODULAR	NEXUS® MODULAR
DENSITY	12,000	9,290
FINISHED PILE THICKNESS	0.072 INCHES	0.093 INCHES
SIZE	18" X 36"	18" X 36"
PATTERN REPEAT	N/A	N/A
TOTAL THICKNESS	0.217 INCHES	0.238 INCHES
SPECIAL TECHNOLOGY	PROTEX® SOIL RELEASE	PROTEX® SOIL RELEASE
OPTIONAL SPECIAL TECHNOLOGIES	PROSEPT® ANTIMICROBIAL SENTIR® ADVANCED ODOR BLOCKING TREATMENT	PROSEPT® ANTIMICROBIAL SENTIR® ADVANCED ODOR BLOCKING TREATMENT
PHYSICAL TESTING	FLOORING RADIANT PANEL – (CLASS 1) PILL TEST – (PASSES) SMOKE DENSITY – (LESS THAN 450 FLAMING) STATIC GENERATION – (LESS THAN 3.5 KV)	FLOORING RADIANT PANEL – (CLASS 1) PILL TEST – (PASSES) SMOKE DENSITY – (LESS THAN 450 FLAMING) STATIC GENERATION – (LESS THAN 3.5 KV)
FIBER WARRANTY	LIFETIME FIBER PERFORMANCE FOR WEAR LIFETIME FIBER PERFORMANCE FOR STATIC LIFETIME STAIN REMOVAL LIFETIME COLORFASTNESS TO LIGHT AND ATMOSPHERIC CONTAMINANTS	LIFETIME FIBER PERFORMANCE FOR WEAR LIFETIME FIBER PERFORMANCE FOR STATIC LIFETIME STAIN REMOVAL LIFETIME COLORFASTNESS TO LIGHT AND ATMOSPHERIC CONTAMINANTS
BACKING WARRANTY	LIFETIME FOR TUFT BIND STRENGTH (EDGE RAVEL, YARN PULLS, ZIPPERING) LIFETIME AGAINST DELAMINATION LIFETIME DIMENSIONAL STABILITY	LIFETIME FOR TUFT BIND STRENGTH (EDGE RAVEL, YARN PULLS, ZIPPERING) LIFETIME AGAINST DELAMINATION LIFETIME DIMENSIONAL STABILITY

RECOMMENDED
INSTALLATION
METHODS

ASHLAR

BASKETWEAVE

HERRINGBONE

PARQUET



PO Box 2207
Dalton, Georgia 30722
U.S.A.

800.451.1250
efcontract.com
AX1623M08