

# Book Club Collection

Prose

Memoir

Novella

ROLLS







## Book Club Collection

Just as getting lost in a good book offers a chance to cozy up and relax, so is the concept of The Book Club Collection—a serene mix of Scandinavian-inspired design offering a relaxing and inviting escape. The subdued earth tones of Prose are a solid foundation that can be used alone or blend seamlessly with Novella and Memoir. Designed for multifamily markets, The Book Club Collection is offered in a palette of seven coordinating, monochromatic shades.









NOVELLA - CREAM - BROADLOOM



MEMOIR - BEIGE - BROADLOOM

NOVELLA



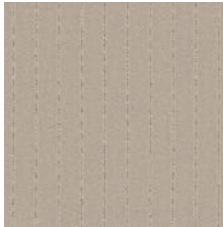
NOV25 | SAND



NOV74 | HAZEL



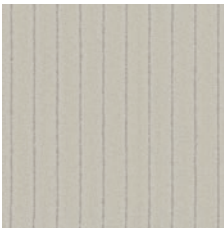
NOV76 | SEPIA



NOV12 | CREAM



NOV57 | OTTER



NOV53 | ASH



NOV55 | SMOKE

ROLLS

SCAN ME!



Scan to order samples or check inventory.

MEMOIR



MME25 | AMBER



MME74 | TAWNY



MME76 | CHESTNUT



MME12 | BEIGE



MME57 | WALNUT



MME53 | PEARL



MME55 | DAPPLED

ROLLS

SCAN ME!



Scan to order samples or check inventory.





PROSE

ROLLS



PRO25 | FLAX



PRO74 | FAWN



PRO76 | ROAN



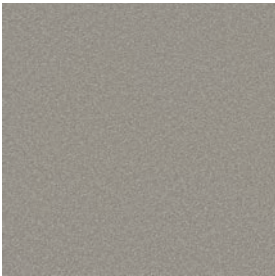
PRO12 | ECRU



PRO57 | UMBRA



PRO53 | DAWN



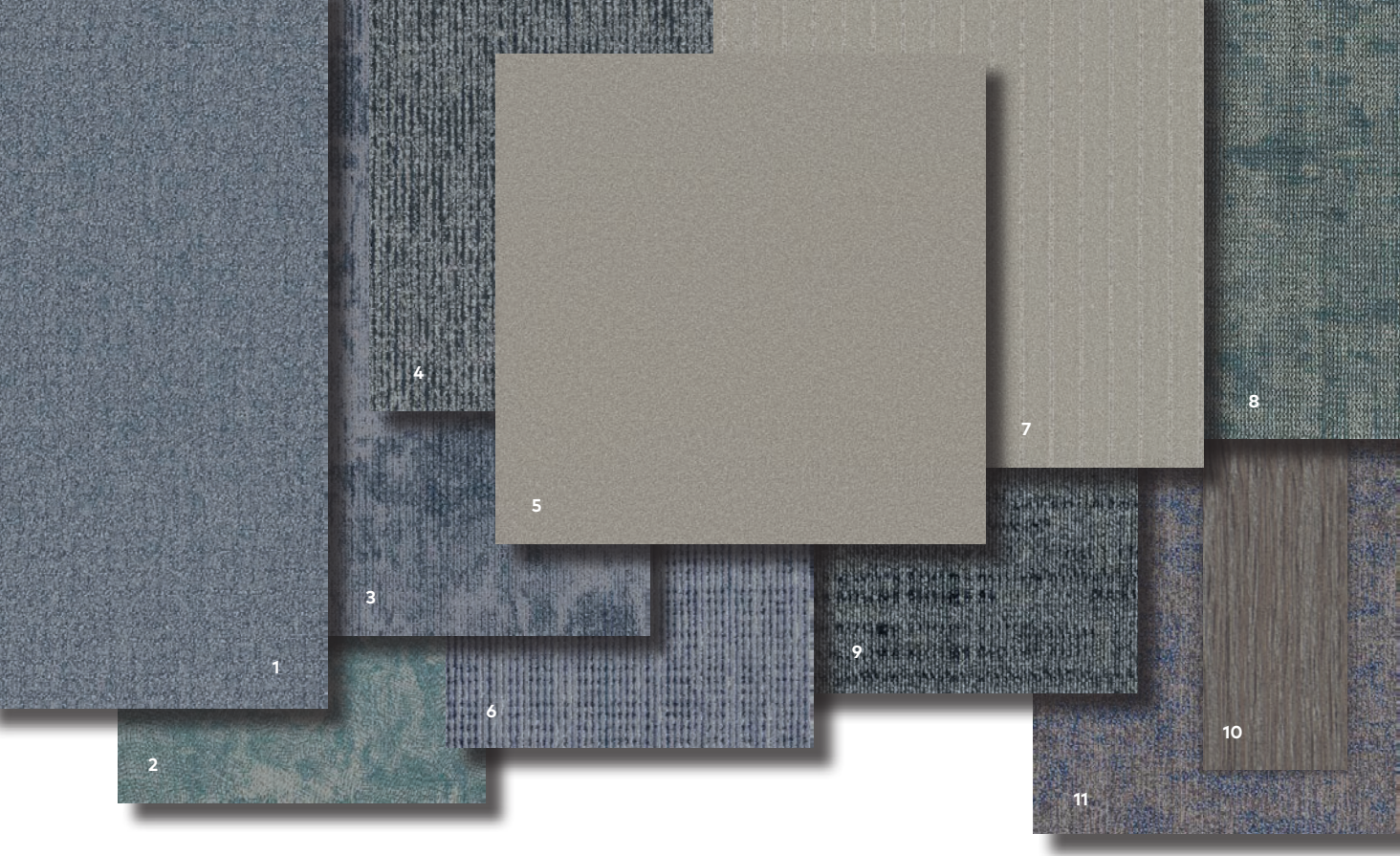
PRO55 | STONE

SCAN ME!



Scan to order  
samples or  
check inventory.





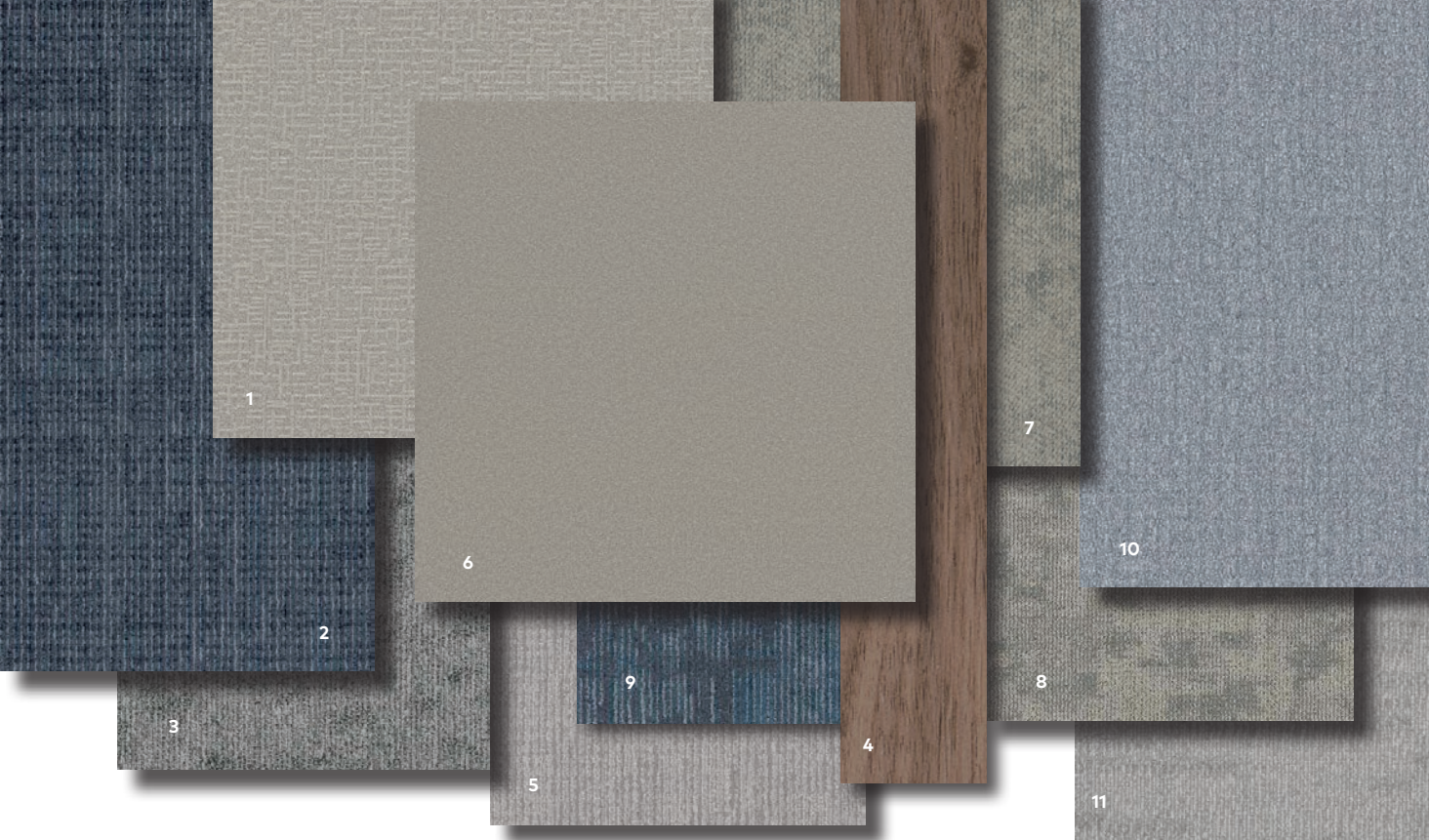
NOVELLA - SMOKE - BROADLOOM | PROSE - STONE - BROADLOOM

### COORDINATING PALETTES

Beyond the beauty of individual products, EF Contract’s flooring **coordinate effortlessly** across all of our product platforms - modular carpet tile, broadloom, LVT and Kinetex textile composite flooring. This offering enables you to blend a range of designs to create **palettes** that meet the demands of each unique space.

1	BATISTE MODERNE - BLEU	BTM45	MODULAR & BROADLOOM
2	IMPRINT - MARINE	IMP45	KINETEX
3	ESPRIT - FRENCH BLUE	ESP45	MODULAR
4	KIMONO - CARBON	KMO53	MODULAR
5	PROSE - STONE	PRO55	BROADLOOM
6	ELAN - MILORI BLUE	ELN45	MODULAR
7	NOVELLA - SMOKE	NOV55	BROADLOOM
8	ALFRESCO - BLUE TREADLE	ALF44	MODULAR
9	KASURI - FERROUS	KAS54	MODULAR
10	WOODLANDS - SILVER ASH	EFCWL009	LVT
11	SPECTRAL DRIFT - AZURE	SDF45	MODULAR





### COORDINATING PALETTES

Beyond the beauty of individual products, EF Contract’s flooring **coordinate effortlessly** across all of our product platforms - modular carpet tile, broadloom, LVT and Kinetex textile composite flooring. This offering enables you to blend a range of designs to create **palettes** that meet the demands of each unique space.

1	MEMOIR - DAPPLED	MME55	BROADLOOM
2	ELAN - PATINA	ELN36	MODULAR
3	SPECTRAL DRIFT - ASH	SDF20	MODULAR
4	WOODLANDS - DANISH TEAK	EFCWL007	LVT
5	KIMONO - SILK	KMO51	MODULAR
6	PROSE - STONE	PRO55	BROADLOOM
7	VESTIGE - ASHEN	VES14	KINETEX
8	ALFRESCO - SILVER WARP	ALF53	MODULAR
9	ESPRIT - VERDIGRIS	ESP36	MODULAR
10	BATISTE MODERNE - ACIER	BTM54	MODULAR & BROADLOOM
11	KASURI - MIST	KAS52	MODULAR



PRODUCT DETAILS

Fiber

SOLUTION DYED PET

EF Contract's solution dyed PET is authentically crafted to provide a spectrum of desirable attributes. It's resistance to stain and bleach, plus its immunity to fading, make it the smart option for your flooring needs. Our solution dyed PET provides vibrant, high definition color in timeless, fashionable designs, that integrate eye-catching aesthetics with state-of-the-art construction. The result? Inherently vivid and durable carpet fibers.

Backings

STANDARD BACK

Our woven synthetic backing system offers superior construction to ensure dimensional stability for broadloom carpets.

OPTIONAL:

TITANBAC® PLUS MOISTURE BARRIER

Adhesives

COMMERCIALON® PREMIUM CARPET ADHESIVE

Formulated for the most demanding interior carpet installations. It forms a powerful bond with stiff and heavy backed commercial carpets directly over approved substrates. It is quick setting, features antimicrobial protection and can be removed easily. This solvent free adhesive is also low in odor, meeting the low VOC emission criteria of the CRI Green Label Plus Indoor Air Quality. Commercialon Premium Adhesive is for use with broadloom backing systems.


Optional Special Technologies

PROSEPT® ANTIMICROBIAL

SENTIR® ADVANCED ODOR-BLOCKING TECHNOLOGY



©2024 Engineered Floors LLC - This unique design is protected under the U.S. Copyright Act of 1976. Any unauthorized copying or duplication of this design constitutes copyright infringement in violation of federal law. Due to the unique visual characteristics of modular carpets, pattern repeats and pattern run-off seams may appear more noticeable than in broadloom carpets. Such visual characteristics do not constitute a manufacturing defect, and as such, should be considered when selecting modular carpet and its installation. These photographs are representations of the installation for this modular product. Your modular installation may look different than these photos depending upon individual tile placement, lighting and overall space layout, including furnishings. Final tile placement and the resulting visual is thus the customer's, and not EF Contract's, responsibility.

STYLE	PROSE   PRO	MEMOIR   MME	NOVELLA   NOV
CONSTRUCTION	CUT PILE	CUT/LOOP	TIP SHEARED LOOP PATTERN
FIBER TYPE	SOLUTION DYED PET	SOLUTION DYED PET	SOLUTION DYED PET
DYE METHOD	SOLUTION DYED	SOLUTION DYED	SOLUTION DYED
OUNCE WEIGHT	30 OZ / SQUARE YARD	25 OZ / SQUARE YARD	25 OZ / SQUARE YARD
GAUGE	1/10 IN	1/10 IN	1/10 IN
BACKING	STANDARD BACK	STANDARD BACK	STANDARD BACK
SIZE	12 FOOT ROLL	12 FOOT ROLL	12 FOOT ROLL
PATTERN REPEAT	N/A	24" W X 28" L	6" W X 13" L
TOTAL THICKNESS	0.418 INCHES	0.366 INCHES	0.325 INCHES
SPECIAL TECHNOLOGY	PROTEX® SOIL RELEASE	PROTEX® SOIL RELEASE	PROTEX® SOIL RELEASE
OPTIONAL SPECIAL TECHNOLOGIES	PROSEPT® ANTIMICROBIAL	PROSEPT® ANTIMICROBIAL	PROSEPT® ANTIMICROBIAL
	SENTIR® ADVANCED ODOR BLOCKING TREATMENT	SENTIR® ADVANCED ODOR BLOCKING TREATMENT	SENTIR® ADVANCED ODOR BLOCKING TREATMENT
	FLOORING RADIANT PANEL – (CLASS 1)	FLOORING RADIANT PANEL – (CLASS 1)	FLOORING RADIANT PANEL – (CLASS 1)
	PILL TEST – (PASSES)	PILL TEST – (PASSES)	PILL TEST – (PASSES)
PHYSICAL TESTING	SMOKE DENSITY – (LESS THAN 450 FLAMING)	SMOKE DENSITY – (LESS THAN 450 FLAMING)	SMOKE DENSITY – (LESS THAN 450 FLAMING)
	STATIC GENERATION – (LESS THAN 3.5 KV)	STATIC GENERATION – (LESS THAN 3.5 KV)	STATIC GENERATION – (LESS THAN 3.5 KV)
	10 YEAR WEAR WARRANTY	10 YEAR WEAR WARRANTY	10 YEAR WEAR WARRANTY
FIBER WARRANTY	10 YEAR STATIC WARRANTY	10 YEAR STATIC WARRANTY	10 YEAR STATIC WARRANTY
	LIFETIME STAIN REMOVAL	LIFETIME STAIN REMOVAL	LIFETIME STAIN REMOVAL
	LIFETIME COLORFASTNESSES TO LIGHT AND ATMOSPHERIC CONDITIONS	LIFETIME COLORFASTNESSES TO LIGHT AND ATMOSPHERIC CONDITIONS	LIFETIME COLORFASTNESSES TO LIGHT AND ATMOSPHERIC CONDITIONS
	10 YEAR FOR TUFT BIND STRENGTH (EDGE RAVEL, YARN PULLS, ZIPPERING)	10 YEAR FOR TUFT BIND STRENGTH (EDGE RAVEL, YARN PULLS, ZIPPERING)	10 YEAR FOR TUFT BIND STRENGTH (EDGE RAVEL, YARN PULLS, ZIPPERING)
BACKING WARRANTY	10 YEAR AGAINST DELAMINATION	10 YEAR AGAINST DELAMINATION	10 YEAR AGAINST DELAMINATION
RECOMMENDED INSTALLATION METHODS	 12' ROLL		

To learn more, visit:

EFCONTRACT.COM





PO Box 2207  
Dalton, Georgia 30722  
U.S.A.

800.451.1250  
[efcontract.com](http://efcontract.com)  
JX6524M01