

FLOORING
FOR SCHOOLS



Kinetex®

EF Contract®



COVER VESTIGE - COBALT

LEFT CHINOOK - WINDS OF CHANGE / VESTIGE - SOOT / DART - SPRING

EF Contract's Kinetex® is a unique floor-covering alternative perfectly suited for learning environments. It is an advanced textile composite that combines key attributes of soft-surface flooring with long-wearing characteristics of hard-surface.

Kinetex breathes: Our unique construction allows moisture to pass through the backing rather than get trapped underneath. This means you can install Kinetex® on a slab with up to 100% RH.

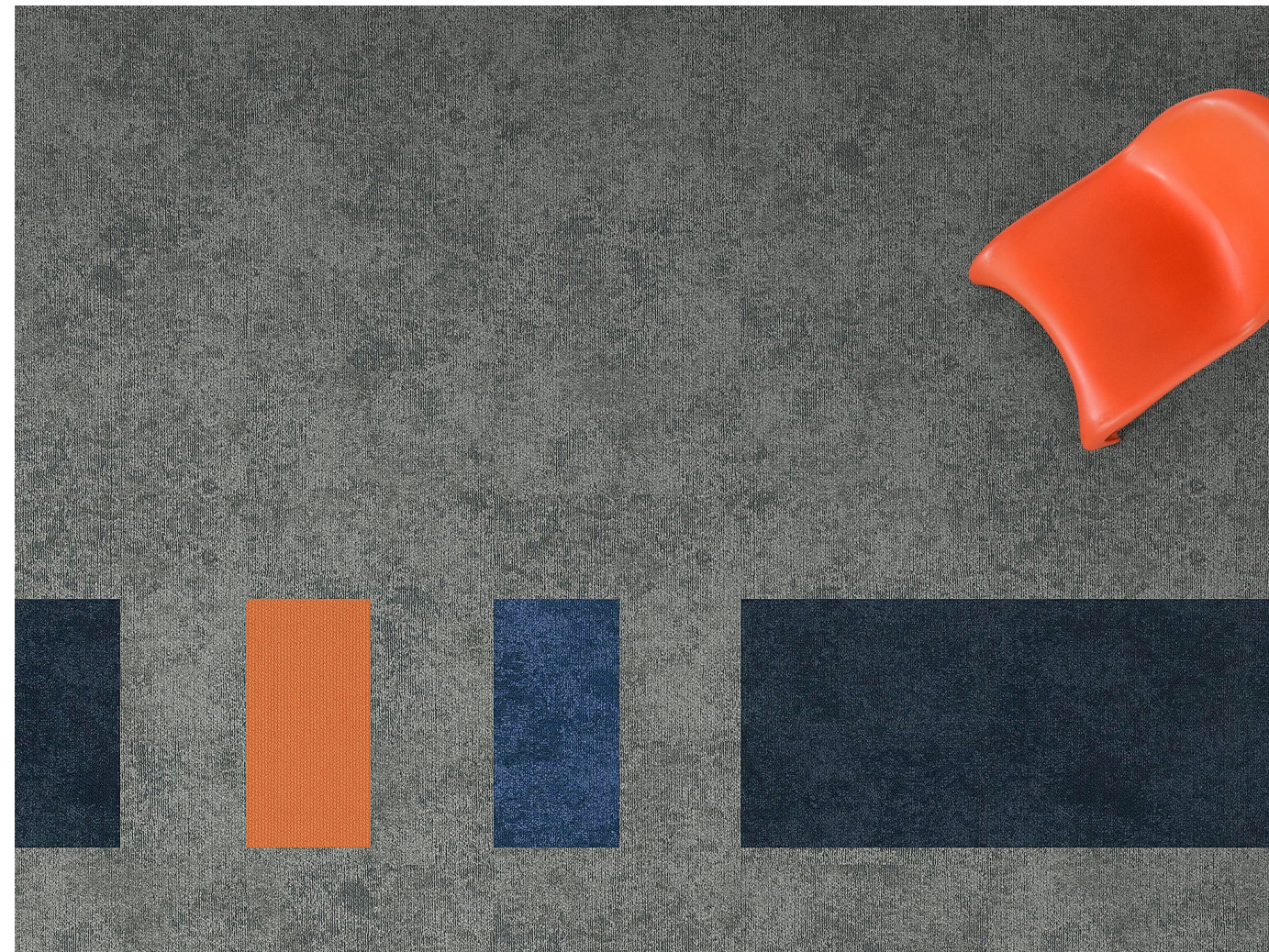
<https://www.efcontractflooring.com/what-is-kinetex/kinetex-attributes/moisture/>

CHINOOK - WINTER WIND





LEFT IMPRINT - CADET



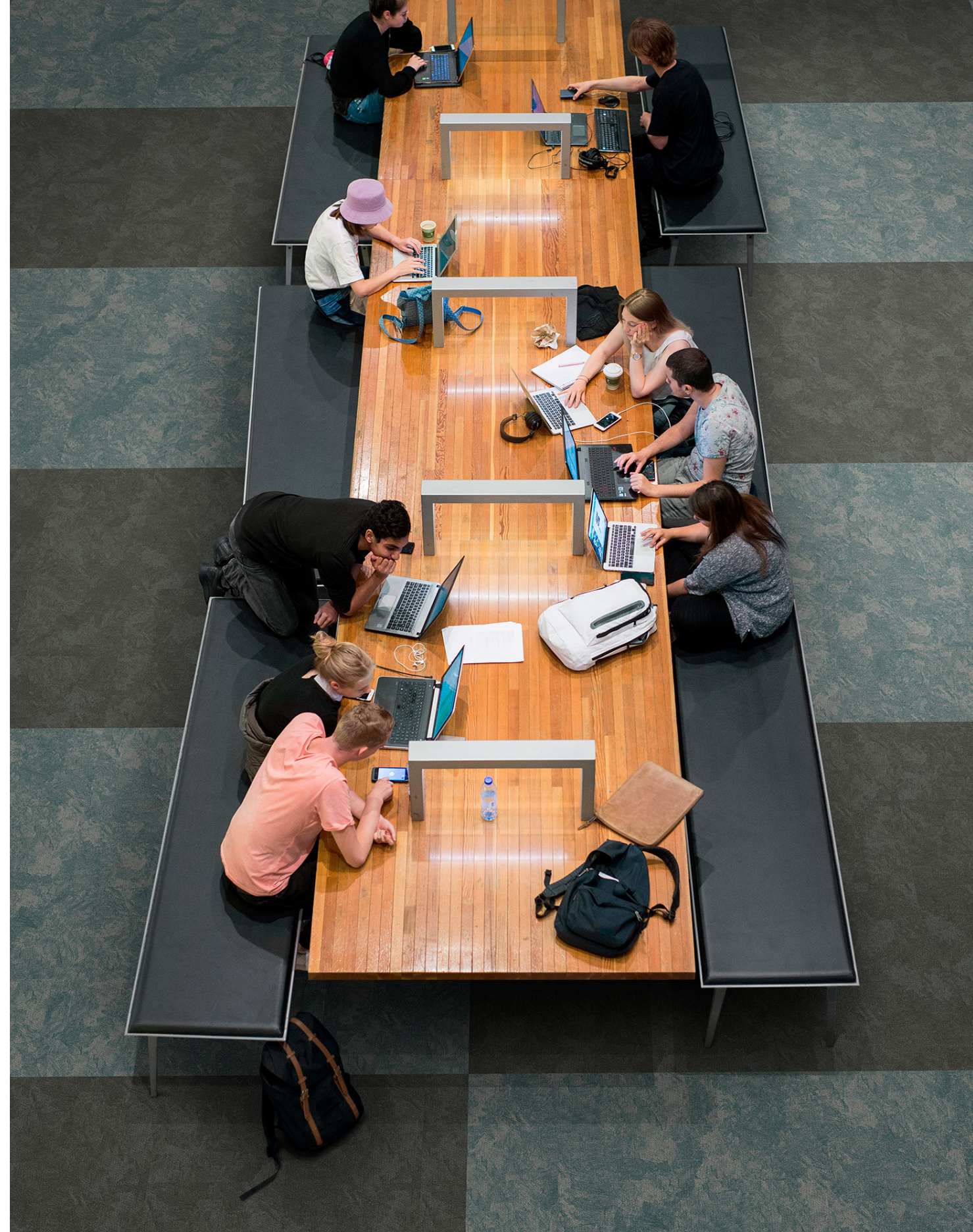
RIGHT VESTIGE - STEEL, ANILINE, COBALT / DART - SURGE



Kinetex quiets: With all the acoustic benefits of soft surfaces, Kinetex is a unique category of textile flooring engineered to perform in high-traffic buildings with a lower cost of ownership than hard surface.

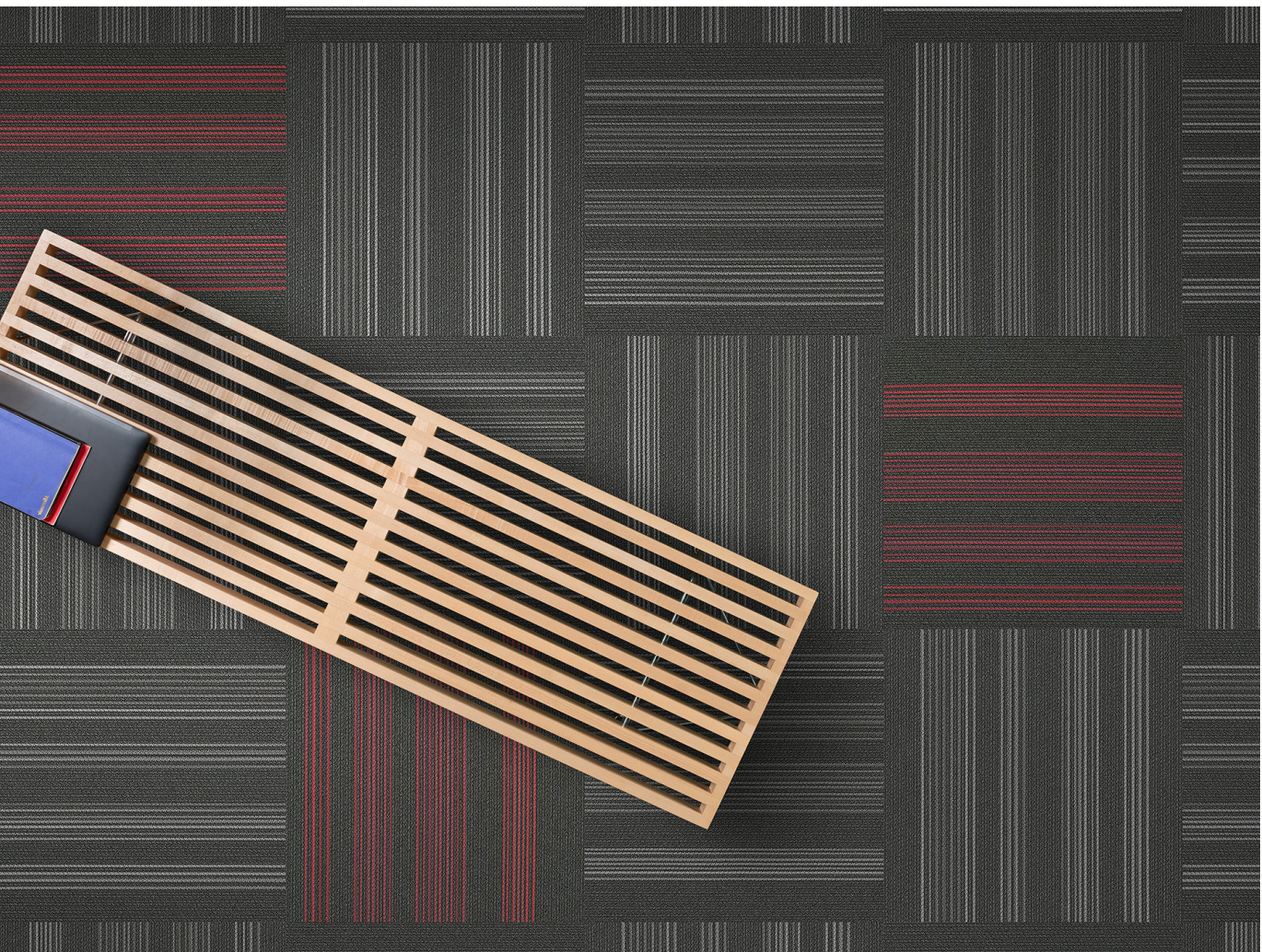
<https://www.efcontractflooring.com/what-is-kinetex/kinetex-attributes/acoustics/>
<https://www.efcontractflooring.com/what-is-kinetex/kinetex-attributes/maintenance/>

IMPRINT - MARINE, PEAT









LEFT SPREE - REVEL, BLAST

RIGHT SIROCCO - WIND SWEPT, WIND GUST



CASCADE

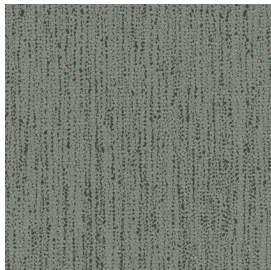
24" X 24"



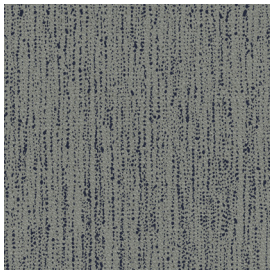
CASCADE | CSC24
SPLASH



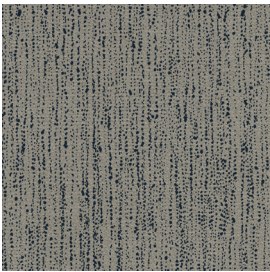
CASCADE | CSC37
STREAM



CASCADE | CSC44
RILL



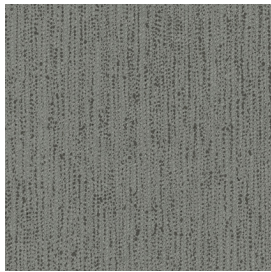
CASCADE | CSC48
SHOWER



CASCADE | CSC49
SPILL



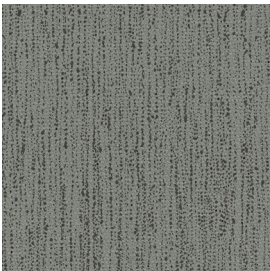
CASCADE | CSC59
RAPID



CASCADE | CSC74
RAINFALL



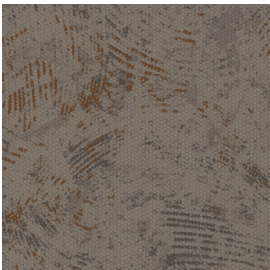
CASCADE | CSC77
RUSH



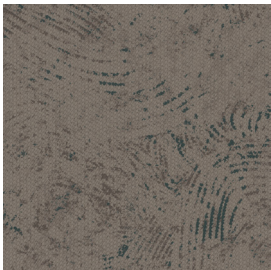
CASCADE | CSC99
CATARACT

24" X 24"

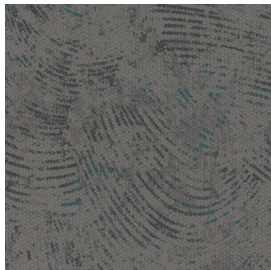
CHINOOK



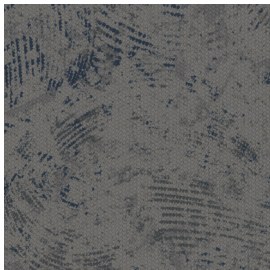
CHINOOK | CNK24
DESERT WIND



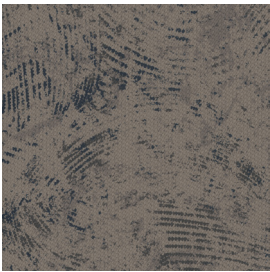
CHINOOK | CNK37
SEA BREEZE



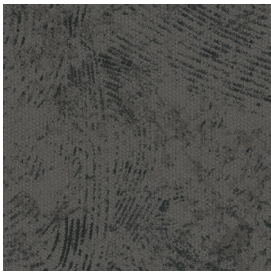
CHINOOK | CNK44
FRESH AIR



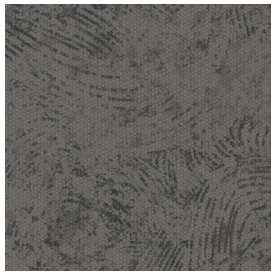
CHINOOK | CNK48
WINTER WIND



CHINOOK | CNK49
WIND SWEPT



CHINOOK | CNK59
WINDGUST



CHINOOK | CNK74
WINDS OF CHANGE



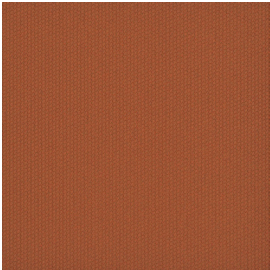
CHINOOK | CNK77
GENTLE BREEZE



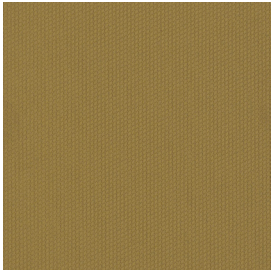
CHINOOK | CNK99
WHIRLWIND

DART

24" X 24" / 12" X 48"



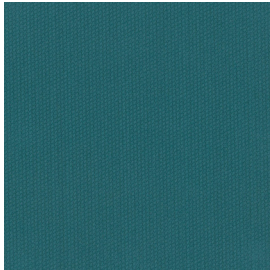
DART | DAR24
SURGE



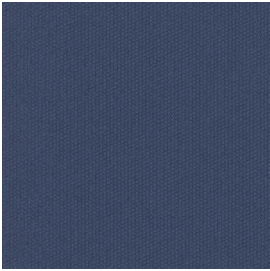
DART | DAR25
DASH



DART | DAR34
FLASH



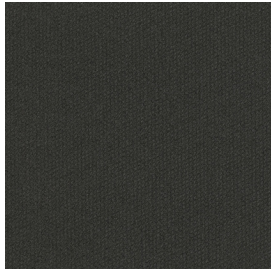
DART | DAR44
WHIZ



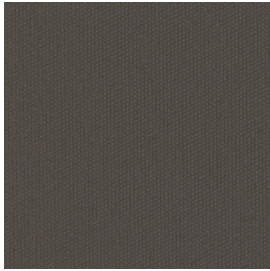
DART | DAR45
SPRINT



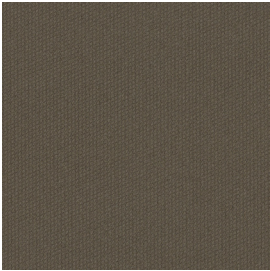
DART | DAR49
HURRY



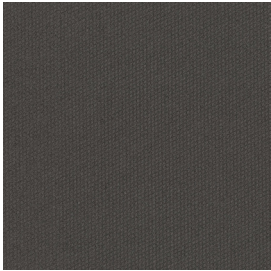
DART | DAR59
ZOOM



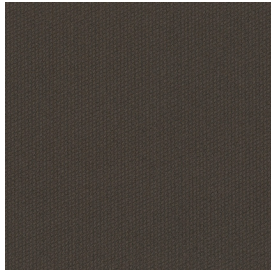
DART | DAR74
BOLT



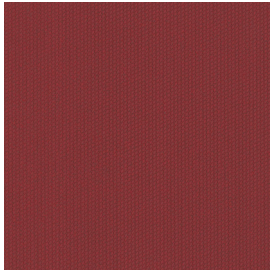
DART | DAR76
GALLOP



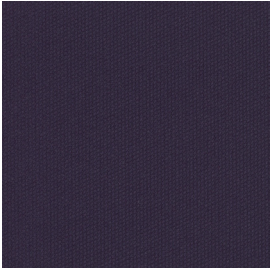
DART | DAR77
FLY



DART | DAR79
ZIP



DART | DAR87
SPRINT



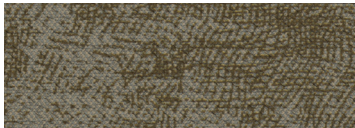
DART | DAR99
STREAK



CASCADE - RILL / DART - DASH, SURGE, WHIZ

IMPRINT

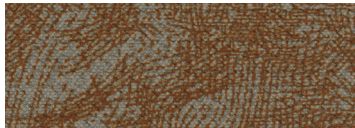
18" X 36"



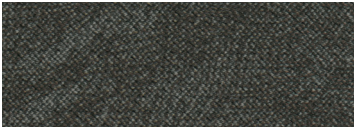
IMPRINT | IMP16
UMBRA



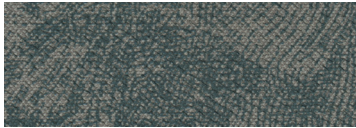
IMPRINT | IMP19
TAUPE



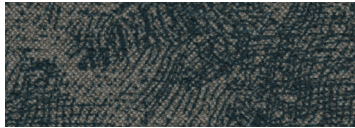
IMPRINT | IMP26
RUSSET



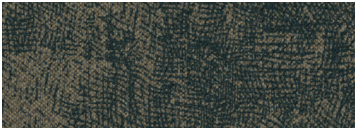
IMPRINT | IMP38
PEAT



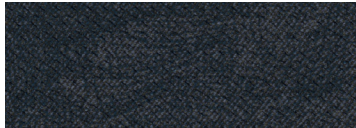
IMPRINT | IMP45
MARINE



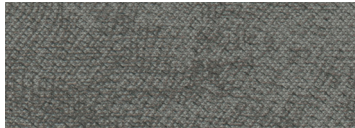
IMPRINT | IMP47
CADET



IMPRINT | IMP48
INDIGO



IMPRINT | IMP49
NAVY



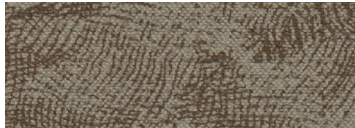
IMPRINT | IMP55
IRON



IMPRINT | IMP56
RAVEN



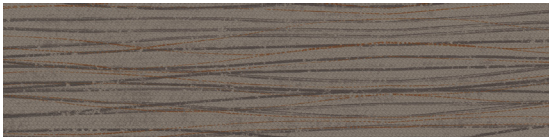
IMPRINT | IMP59
INK



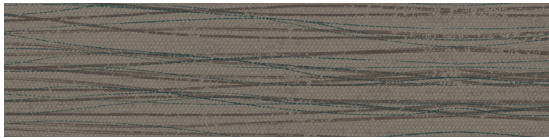
IMPRINT | IMP77
ACORN

12" X 48"

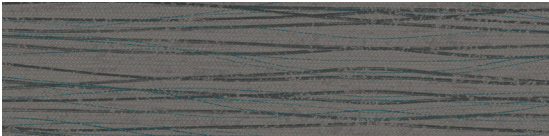
SIROCCO



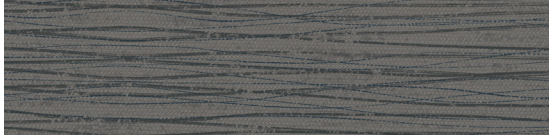
SIROCCO | SCR24
DESERT WIND



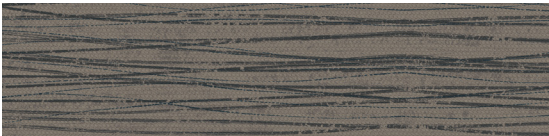
SIROCCO | SCR37
SEA BREEZE



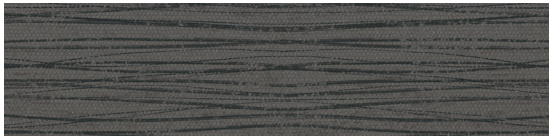
SIROCCO | SCR44
FRESH AIR



SIROCCO | SCR48
WINTER WIND



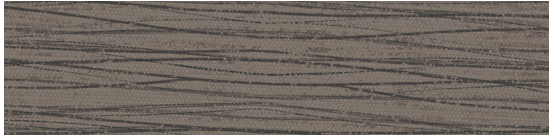
SIROCCO | SCR49
WIND SWEEP



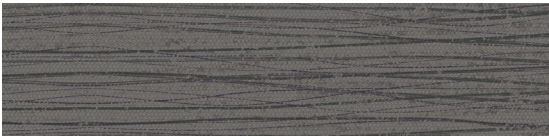
SIROCCO | SCR59
WINDGUST



SIROCCO | SCR74
WIND OF CHANGE



SIROCCO | SCR77
GENTLE BREEZE



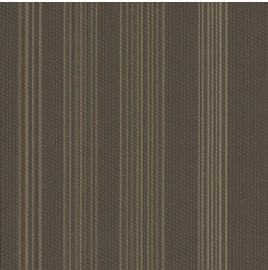
SIROCCO | SCR99
WHIRLWIND

SPREE

24" X 24"



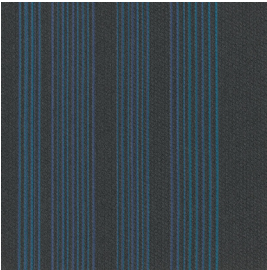
SPREE | SPR25
SHINDIG



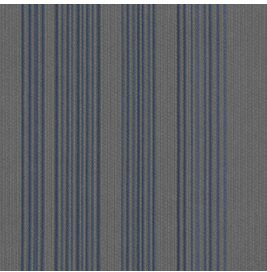
SPREE | SPR27
HEYDAY



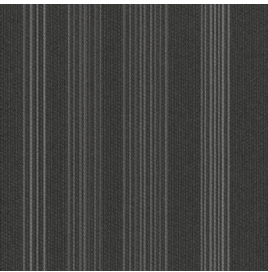
SPREE | SPR34
FLING



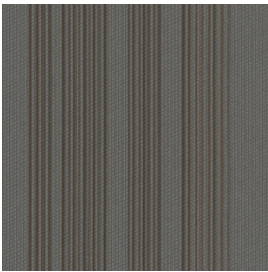
SPREE | SPR44
GALA



SPREE | SPR45
LARK



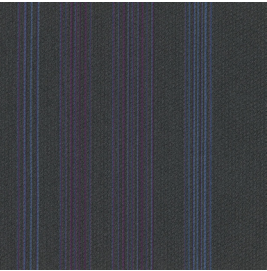
SPREE | SPR59
BLAST



SPREE | SPR77
BASH



SPREE | SPR89
REVEL



SPREE | SPR99
PARTY

24" X 24"

VESTIGE



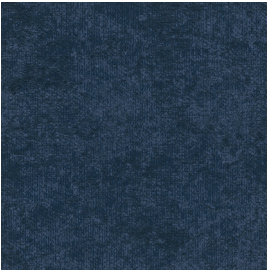
VESTIGE | VES14
ASHEN



VESTIGE | VES35
AQUAMARINE



VESTIGE | VES36
CHAMELEON



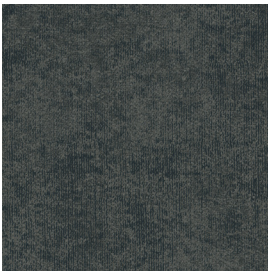
VESTIGE | VES46
ANILINE



VESTIGE | VES49
COBALT



VESTIGE | VES53
STEEL



VESTIGE | VES55
SLATE



VESTIGE | VES56
SOOT



VESTIGE | VES59
BLACKENED



VESTIGE | VES78
WALNUT

A growing body of research correlates certain aspects of the built environment, such as acoustics, indoor air quality, glare and ergonomics, with measurable outcomes related to productivity, health, safety and effectiveness. Flooring can play a pivotal role in achieving positive outcomes when positioning these factors in many institutional environments. Combined with the practiced approach of evidence-based design, Kinetex provides a solid foundation for performance-driven settings.

- 

1 Durability Kinetex delivers enduring performance, year after year. One of the most thoroughly tested flooring products on the market, it has outstanding dimensional stability and unparalleled crush resistance—and has withstood more than 5 million foot traffic events, which is equivalent to decades of traffic in a typical classroom or office setting.
- 

2 Maintenance Tough to wear out, easy to maintain; with vacuuming and encapsulation cleaning, Kinetex looks like new, year after year. Thanks to a lightweight face construction, Kinetex retains less water than carpet and dries faster. It is easily sanitized and resists the most challenging staining agents, including beverages, condiments, oily food, biological spills and most other common stains—which means splashes and spills are no match for Kinetex.
- 

3 Moisture Tolerance The most common subfloor, concrete, can release excessive moisture and destroy floor covering systems—unless costly precautions are taken before installation. But moisture mitigation isn't necessary with Kinetex; its breathable nature allows moisture to pass through its backing, instead of trapping it underneath. Kinetex textile composite flooring will perform in elevated RH slabs up to 100%.
- 

4 Health Kinetex minimizes airborne particulates that trigger allergies and cause infection. It easily surpasses California's 01350 requirements—the most popular U.S. standard for evaluating and restricting VOC emissions indoors. Plus: it's easily sanitized and quick to dry, so cleaning Kinetex is fast and effective.

- 

5 Safety Kinetex is the only wall-to-wall textile floor covering certified as High-Traction by the National Floor Safety Institute. Its innovative construction creates one of the most slip-resistant flooring surfaces ever tested—wet or dry—to prevent falls before they happen. And with a unique low profile, Kinetex has minimal rolling resistance, potentially reducing injuries from pushing and pulling.
- 

6 Acoustics Kinetex delivers unparalleled acoustic performance, with one of the highest Noise Reduction Coefficients (NRC) and Impact Insulation Classifications (IIC) ratings of any commercial flooring product. The result: a dramatic reduction in both in-room and structure-borne noise, allowing for greater voice recognition, fewer mistakes, less vocal strain, enhanced learning and improved occupant perception.
- 

7 Comfort Kinetex, a soft textile surface with a high-density backing, has exceptional anti-fatigue properties and minimal rolling resistance. Because it can absorb energy, Kinetex has the potential to reduce repetitive foot stress injuries and other injuries related to standing and frequent movement from place to place. With its thermal insulation properties, Kinetex also provides a warmer indoor environment.
- 

8 Sustainability Made with 45% post-consumer recycled content, each Kinetex tile contains the equivalent of 27 used water bottles. This dematerialized flooring product and its longer life mean that Kinetex has a much smaller environmental footprint than other commercial flooring options. Furthermore, Kinetex is NSF/ANSI-140 Platinum certified (the industry-leading standard for sustainability) and has a Red List Free DECLARE label.

In addition, Kinetex is easily recycled into the next generation of itself, as easily as a plastic bottle and all Kinetex products carry a Third Party Verified Declare label affirming Kinetex as both a simple and sustainable flooring solution, guaranteed.



PO Box 2207
Dalton, Georgia 30722
U.S.A.

800.451.1250
efcontractflooring.com