

Quickship

Freestyle

MODULAR CARPET





Freestyle

Themes of contemporary art, Freestyle translates the geometric patterns found in abstract murals of urban artistic expression into a free-form canvas for the floor. The modern-spirited conceptual motif scrolls across 24"x24" tiles in 8 beautifully saturated neutral tones allowing design flexibility for a variety of creative and effortless installations.









24" X 24"

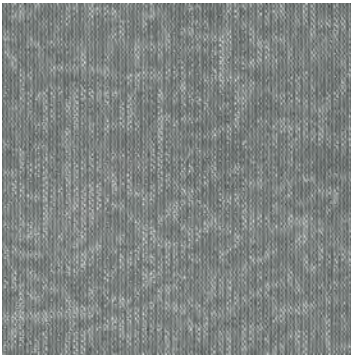
FREESTYLE



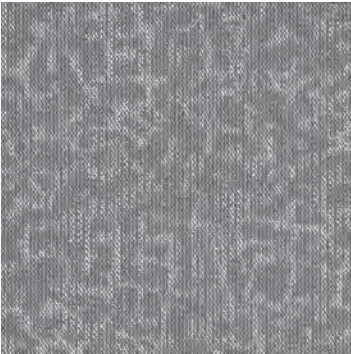
FRS47 | FOLIAGE



FRS49 | BICE



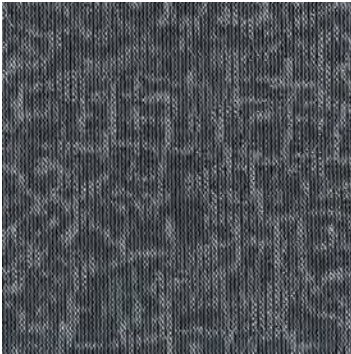
FRS55 | RIVERSTONE



FRS56 | MOLESKIN



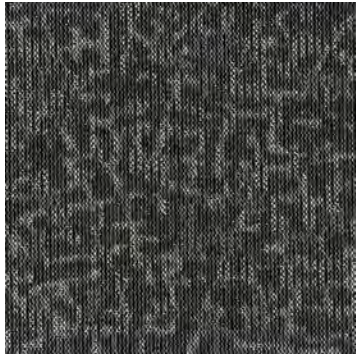
FRS58 | SLOE



FRS59 | BLACKSTONE



FRS73 | ADOBE



FRS77 | WREN

SCAN ME!



Scan to order
samples or
check inventory.



COORDINATING PALETTES

Beyond the beauty of individual products, EF Contract’s flooring **coordinate effortlessly** across all of our product platforms - modular carpet tile, broadloom, LVT and Kinetex textile composite flooring. This offering enables you to blend a range of designs to create **palettes** that meet the demands of each unique space.

1	VESTIGE - ASHEN	VES14	KINETEX
2	COMMON THREAD - OBSIDIAN MELD	CMT77	MODULAR
3	BATISTE - FEDORA	BTT74	MODULAR
4	CONTEXT - RELATION	CNT52	BROADLOOM
5	FREESTYLE - WREN	FRS77	MODULAR
6	INTENT - RESOLVE	INT15	BROADLOOM
7	SCRATCHED CONCRETE - CHARCOAL	BLVSC001	LVT
8	ARTISAN - WREN	ART77	MODULAR
9	WOODLANDS - MOCHA	EFCWL010	LVT
10	CROSSING II - KNITTING NEEDLE	CSS72	MODULAR



FREESTYLE - WREN

PRODUCT DETAILS

Fiber

ENCORE® SD ULTIMA® (WITH RECYCLED CONTENT)
Encore SD Ultima is specifically engineered to maximize appearance retention with exceptional color, performance, sustainability and practicality.

Moisture

Are high levels of moisture in your concrete slab causing issues with your project’s floor covering? We can help.

- Nexus Modular Carpet with TileTabs - 99% RH
- Cost-efficient
- Long-term performance
- Straightforward, easy-to-understand Lifetime warranty
- Requires no special floor preparation

RH/pH Warranty

Warranty: Installed With TileTabs	Lifetime
Warranty: Installed With Commercialon® Premium Adhesive (non-prorated)	Lifetime
Warranty: Installed With Any Other Adhesive	1 year
Max RH, pH Installed Without Commercialon® Sealer	90% RH, pH 9
Max RH, pH Installed With Commercialon® Premium Sealer	99% RH, pH 11 (TileTabs) — 97% RH, pH 11 (Commercialon)

Backings

NEXUS® MODULAR
Nexus modular products can be installed in a variety of ways and are performance engineered to be visually appealing. In addition, they are designed to accommodate your long-term flooring budget.

- Contains pre-consumer recycled content and contributes to LEED
- Recyclable through EF Contract’s R4 Carpet Reclamation Program

Adhesives

COMMERCIALON® PREMIUM MODULAR ADHESIVE
A high-strength acrylic latex-based carpet adhesive specifically formulated for bonding modular PVC-backed carpet to the floor. This premium adhesive is for use with all Nexus Modular Tile products. This adhesive is guaranteed for the life of the installation when used in accordance with the EF Contract Carpet Installation Handbook. Commercialon Premium Modular Adhesive meets the CRI Low-VOC Emission Criteria. Commercialon Premium Modular Adhesive is nontoxic, has ultra-low odor and is antimicrobial in the dry state.

Optional

TILETABS
High Tack Adhesive Tabs (modular only)

Technologies

PROTEX® SOIL RELEASE
ProTex is a proprietary soil release technology that is applied and bonded to the pile fiber to impede soiling and to improve cleanability. It is standard on all EF Contract flooring products.

Optional

PROSEPT® ANTIMICROBIAL
SENTIR® ADVANCED ODOR-BLOCKING TECHNOLOGY

©2021 Engineered Floors LLC - This unique design is protected under the U.S. Copyright Act of 1976. Any unauthorized copying or duplication of this design constitutes copyright infringement in violation of federal law.

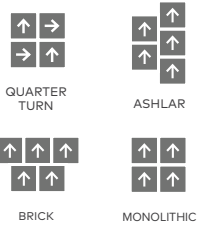
Due to the unique visual characteristics of modular carpets, pattern repeats and pattern run-off seams may appear more noticeable than in broadloom carpets. Such visual characteristics do not constitute a manufacturing defect, and as such, should be considered when selecting modular carpet and its installation. These photographs are representations of the installation for this modular product. Your modular installation may look different than these photos depending upon individual tile placement, lighting and overall space layout, including furnishings. Final tile placement and the resulting visual is thus the customer’s, and not EF Contract’s, responsibility.

To learn more, visit:

EFCONTRACTFLOORING.COM

STYLE	FREESTYLE TFRS
CONSTRUCTION	PATTERNED SCROLL
FIBER TYPE	ENCORE® SD ULTIMA® NYLON
DYE METHOD	SOLUTION DYED
OUNCE WEIGHT	15 OZ / YD2
GAUGE	1/12 IN
BACKING	NEXUS® MODULAR
DENSITY	8,852
TOTAL THICKNESS	0.217
SIZE	24” W X 24” L
PATTERN REPEAT	N/A
FINISHED PILE THICKNESS	.061 INCHES
SPECIAL TECHNOLOGY	PROTEX® SOIL RELEASE
OPTIONAL SPECIAL TECHNOLOGIES	PROSEPT® ANTIMICROBIAL SENTIR® ADVANCED ODOR BLOCKING TREATMENT
PHYSICAL TESTING	FLOORING RADIANT PANEL – (CLASS 1) PILL TEST – (PASSES) SMOKE DENSITY – (LESS THAN 450 FLAMING) STATIC GENERATION – (LESS THAN 3.5 KV)
WARRANTIES	LIFETIME FIBER PERFORMANCE FOR WEAR LIFETIME FIBER PERFORMANCE FOR STATIC LIFETIME STAIN REMOVAL LIFETIME COLORFASTNESS TO LIGHT AND ATMOSPHERIC CONTAMINANTS LIFETIME FOR TUFT BIND STRENGTH (EDGE RAVEL, YARN PULLS, ZIPPERING) LIFETIME AGAINST DELAMINATION LIFETIME DIMENSIONAL STABILITY

RECOMMENDED
INSTALLATION
METHODS





PO Box 2207
Dalton, Georgia 30722
U.S.A.

800.451.1250
efcontractflooring.com