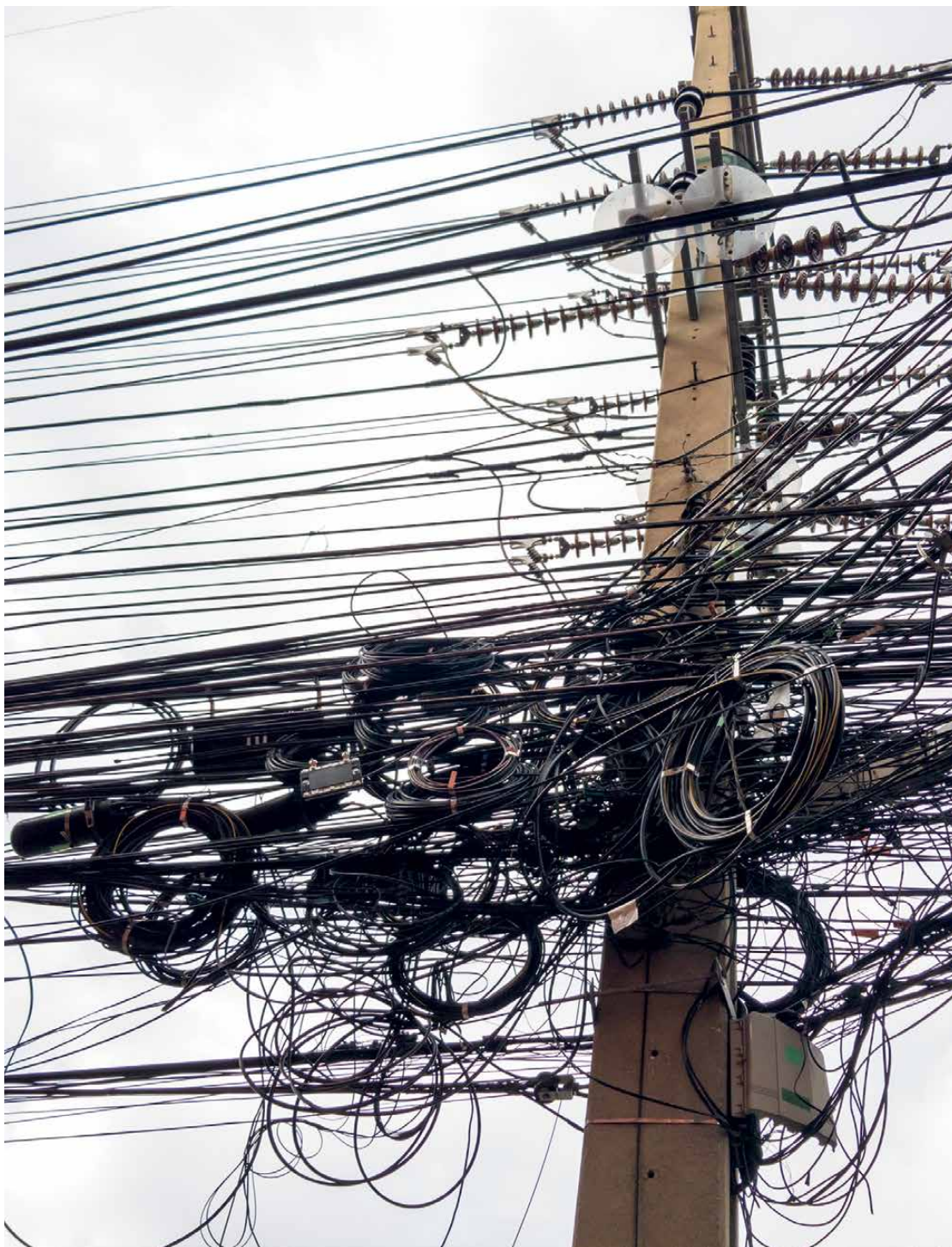


Quickship

Landline

BROADLOOM





Landline

Intricate elements of circuitry, elaborate intersecting roadways, and the wired connectivity of our built environment radiate a synergy that is captured in Landline. Tonal grids of slate, charcoal and ebony subtly contrast over cool neutral backgrounds, offering a modern, textural motif. Specifically designed for broadloom applications, Landline will bring connection to a variety of interiors.

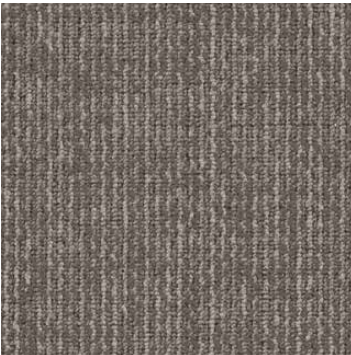








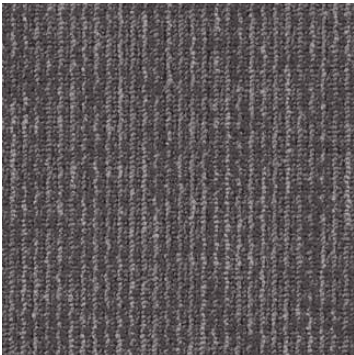
BROADLOOM



LND17 | HANG UP



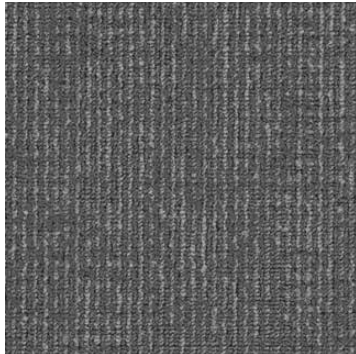
LND75 | DIAL TONE



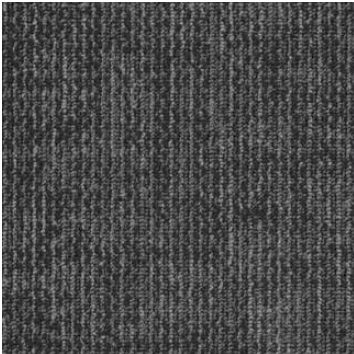
LND77 | REDIAL



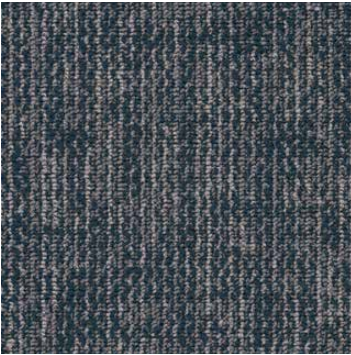
LND15 | RING



LND55 | AREA CODE



LND57 | SWITCHBOARD



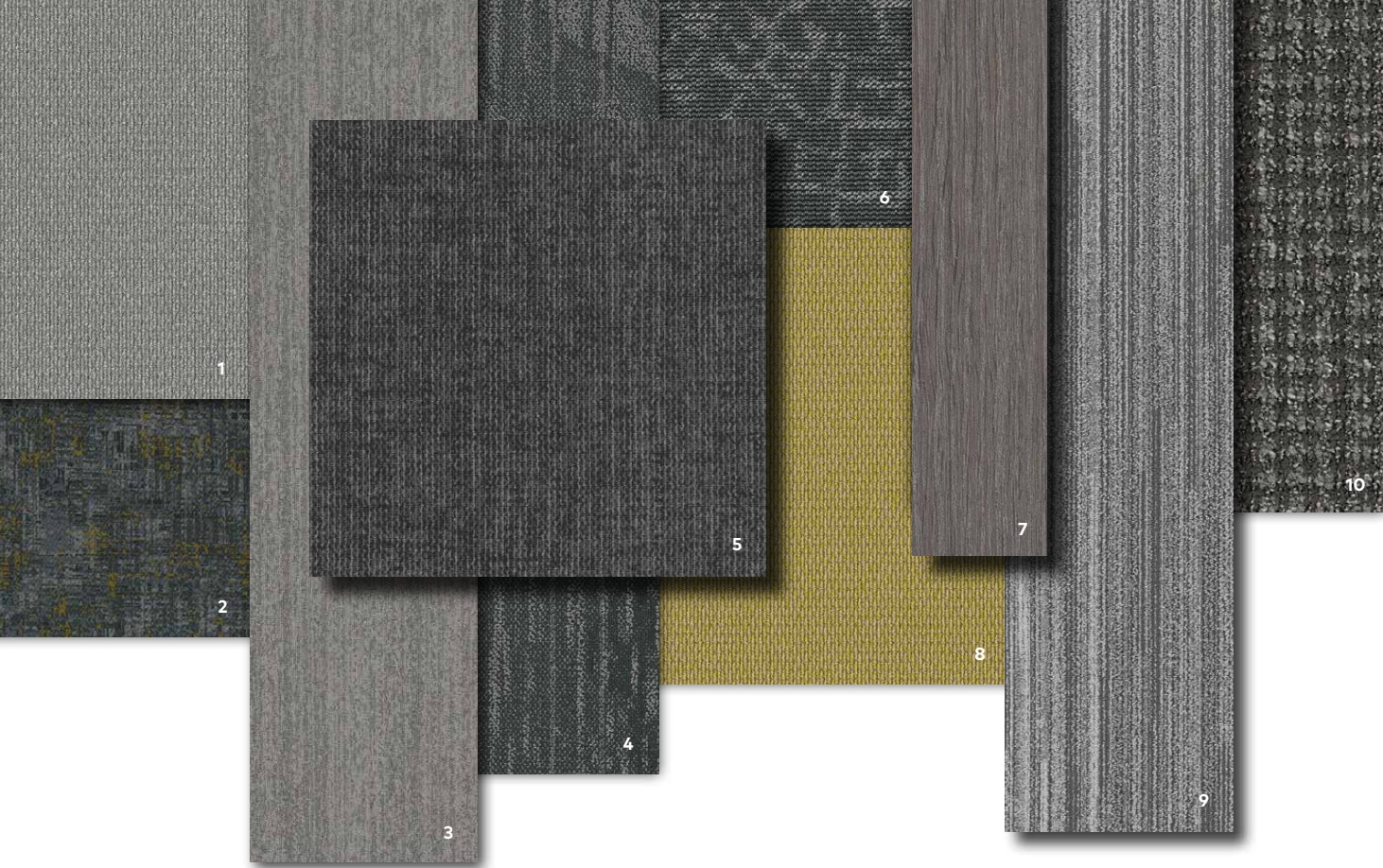
LND47 | OPERATOR

LANDLINE

SCAN ME!



Scan to order
samples or
check inventory.



LANDLINE - SWITCHBOARD | WOODLANDS - SILVER ASH | FREESTYLE - BLACKSTONE

COORDINATING PALETTES

Beyond the beauty of individual products, EF Contract’s flooring **coordinate effortlessly** across all of our product platforms - modular carpet tile, broadloom, LVT and Kinetex textile composite flooring. This offering enables you to blend a range of designs to create **palettes** that meet the demands of each unique space.

1	THE BRIGHTS - STARDUST	BT901	MODULAR
2	INTRIGUE - CAPTIVATE	ITR25	KINETEX
3	COMMON THREAD - PEWTER RAPPORT	CMT51	MODULAR
4	VEIL - CONCEAL	VLT58	MODULAR
5	LANDLINE - SWITCHBOARD	LND57	BROADLOOM
6	FREESTYLE - BLACKSTONE	FRS59	MODULAR
7	WOODLANDS - SILVER ASH	EFCWL009	LVT
8	THE BRIGHTS - LEMON ZEST	BT503	MODULAR
9	LINE - PIPE	LNE52	MODULAR
10	CONTEXT - SITUATION	CNT57	BROADLOOM

Fiber

ENCORE® SD NYLON WITH TERAPLEX® SD
The hybrid fiber system of Landline combines the best of Encore SD and TeraPlex® SD. Encore® SD is specifically engineered to maximize appearance retention with exceptional color, performance, sustainability and practicality. TeraPlex® SD is engineered to maximize appearance retention with exceptional color, performance, sustainability and practicality. TeraPlex® SD is an advanced GEN III continuous filament PET fiber for today's commercial flooring. Introduced after 30 years of intensive R&D by leading polymer scientists, it utilizes the best PET resin to create a resilient carpet fiber with exceptional clarity and stain-resistance properties.

Backings

PREMIERBAC® PLUS
is standard on broadloom products and provides superior construc-tion to ensure solid dimensional stability for broadloom carpets.

- » Stretch-in or glue-down installation
- » Manufactured in an ISO 14001 certified facility
- » Contains pre-consumer recycled content and contributes to LEED
- » Recyclable through the EF Contract R4 Carpet Reclamation Program

Adhesives

COMMERCIALON® PREMIUM CARPET ADHESIVE
Formulated for the most demanding interior carpet installations. It forms a powerful bond with stiff and heavy backed commercial carpets directly over approved substrates. It is quick setting, features antimicrobial protection and can be removed easily. This solvent free adhesive is also low in odor, meeting the low VOC emission criteria of the CRI Green Label Plus Indoor Air Quality. Commercialon Premium Adhesive is for use with broadloom backing systems.

Technologies

PROTEX® SOIL RELEASE
ProTex is a proprietary soil release technology that is applied and bonded to the pile fiber to impede soiling and to improve cleanability. It is standard on all EF Contract flooring products.

Optional

PROSEPT® ANTIMICROBIAL
ProSept is a safe braod spectrum antimicrobial that protects the carpet from bacterial and fungal growth.

SENTIR® ADVANCED ODOR-BLOCKING TECHNOLOGY
Sentir is a breakthrough odor-blocking technology for EF Contract broadloom and modular commercial carpet. This self-renewing treatment is designed to control or eliminate offensive odors associated with indoor environments and is particularly effective on odor-bearing spills.

©2021 Engineered Floors LLC - This unique design is protected under the U.S. Copyright Act of 1976. Any unauthorized copying or duplication of this design constitutes copyright infringement in violation of federal law.

Due to the unique visual characteristics of modular carpets, pattern repeats and pattern run-off seams may appear more noticeable than in broadloom carpets. Such visual characteristics do not constitute a manufacturing defect, and as such, should be considered when selecting modular carpet and its installation. These photographs are representations of the installation for this modular product. Your modular installation may look different than these photos depending upon individual tile placement, lighting and overall space layout, including furnishings. Final tile placement and the resulting visual is thus the customer's, and not EF Contract's, responsibility.

To learn more, visit:
EFCONTRACTFLOORING.COM

STYLE	LANDLINE LND
CONSTRUCTION	PATTERNED SCROLL
FIBER TYPE	ENCORE® SD NYLON WITH TERAPLEX® SD
DYE METHOD	SOLUTION DYED
OUNCE WEIGHT	22 OZ / SQUARE YARD
GAUGE	1/12 IN
BACKING	PREMIERBAC® PLUS
DENSITY	11,429
SIZE	12 FOOT ROLL
PATTERN REPEAT	24" W X 24" L
FINISHED PILE THICKNESS	0.063 INCHES
SPECIAL TECHNOLOGY	PROTEX® SOIL RELEASE
OPTIONAL SPECIAL TECHNOLOGIES	PROSEPT® ANTIMICROBIAL SENTIR® ADVANCED ODOR BLOCKING TREATMENT
PHYSICAL TESTING	FLOORING RADIANT PANEL – (CLASS 1) PILL TEST – (PASSES) SMOKE DENSITY – (LESS THAN 450 FLAMING) STATIC GENERATION – (LESS THAN 3.5 KV)
WARRANTIES	10 YEAR WEAR WARRANTY 10 YEAR STATIC WARRANTY LIFETIME STAIN REMOVAL LIFETIME COLORFASTNESS TO LIGHT AND ATMOSPHERIC CONTAMINANTS

RECOMMENDED
INSTALLATION
METHODS



12' ROLL





PO Box 2207
Dalton, Georgia 30722
U.S.A.

800.451.1250
efcontractflooring.com
MX7321M03