

Batiste II

Modular Carpet

 EF Contract™



We're EF Contract.

Part of the fastest-growing, most progressive family of flooring companies, we stand for confidence in quality, relentless service and doing right by all.

Our products are inspired by you: offering the carpet and hard-surface flooring that you want and need, that you've been seeking but unable to find, until now.

Every collection, pattern and colorway are created with best in class performance and in pursuit of design that is simply beautiful.

Modular carpet has transformed the flooring industry, with its durability, ease of maintenance and design flexibility. We go even further, creating wide-ranging formats including squares, planks and skinny planks — as well as patterns and colorways that enable a custom look to every floor. So you can install coordinating products or even multiple colors of a single design to create variety within your space.

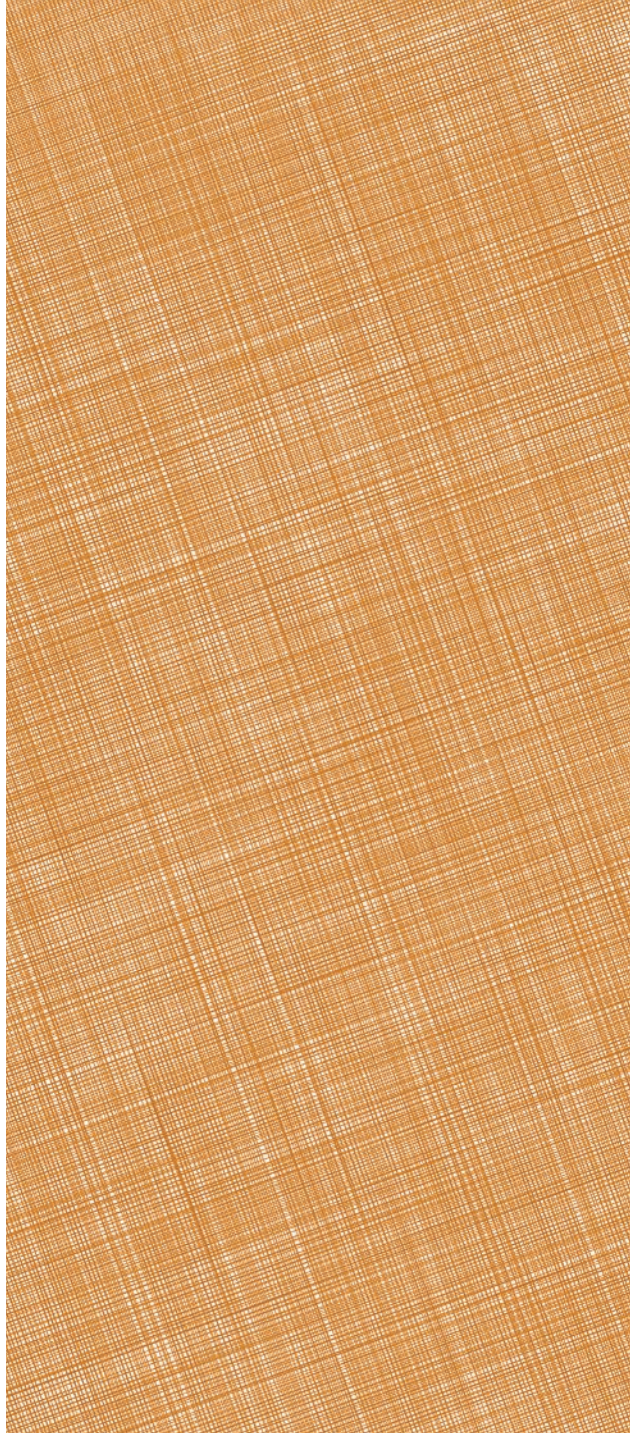


Batiste II

Inspired by the plain-weave linens of 13th-century French craftsman Jean-Batiste, these carpet planks feature a small cross-hatch pattern. Available in nine sophisticated colorways, each of which includes metallic highlights.



BATISTE II - SATEEN / BATISTE II - WORSTED / BATISTE II - FISHNET / BATISTE II - ANTIQUE LACE



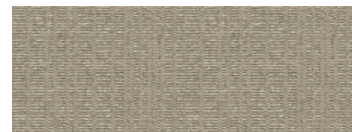


BATISTE II - FEDORA / BATISTE II - SATEEN / BATISTE II - TWEED DELUXE





BATISTE II



BATISTE II | TBTT12 | BTT12
ANTIQUE LACE



BATISTE II | TBTT14 | BTT14
EURO FLAX



BATISTE II | TBTT24 | BTT24
WORSTED



BATISTE II | TBTT51 | BTT51
SILK & SEQUINS



BATISTE II | TBTT53 | BTT53
SATEEN



BATISTE II | TBTT56 | BTT56
GROSGRAIN



BATISTE II | TBTT58 | BTT58
TWEED DELUXE



BATISTE II | TBTT74 | BTT74
FEDORA



BATISTE II | TBTT78 | BTT78
FISHNET

Style	BATISTE II TBTT, BTT
Construction	TEXTURED LOOP PATTERN
Fiber Type	100% ENCORE® SD ULTIMA® NYLON (with recycled content)
Dye Method	SOLUTION DYED
Ounce Weight	22 OZ / YD2
Gauge	1/10 IN
Backing	NEXUS® MODULAR, PREMIERBAC® PLUS
Density	7,200
Size	12" W X 48" L PLANK, ROLL

PRODUCT DETAILS

Fiber

100% ENCORE®SD ULTIMA® (WITH RECYCLED CONTENT)

Encore SD Ultima is specifically engineered to maximize appearance retention with exceptional color, performance, sustainability and practicality.

Moisture

Are high levels of moisture in your concrete slab causing issues with your project’s floor covering? We can help.

- Nexus Modular Carpet with TileTabs - 99% RH
- Cost-efficient
- Long-term performance
- Straightforward, easy-to-understand Lifetime warranty
- Requires no special floor preparation

RH/pH Warranty

Warranty: Installed With TileTabs	Lifetime
Warranty: Installed With Commercialon® Premium Adhesive (non-prorated)	Lifetime
Warranty: Installed With Any Other Adhesive	1 year
Max RH, pH Installed Without Commercialon® Sealer	90% RH, pH 9
Max RH, pH Installed With Commercialon® Premium Sealer	99% RH, pH 11 (TileTabs) — 97% RH, pH 11 (Commercialon)

Backings

NEXUS® MODULAR

Nexus modular products can be installed in a variety of ways and are performance engineered to be visually appealing. In addition, they are designed to accommodate your long-term flooring budget.

- Contains pre-consumer recycled content and contributes to LEED
- Recyclable through EF Contract’s R4 Carpet Reclamation Program

Adhesives

COMMERCIALON® PREMIUM MODULAR ADHESIVE

A high-strength acrylic latex-based carpet adhesive specifically formulated for bonding modular PVC-backed carpet to the floor. This premium adhesive is for use with all Nexus Modular Tile products. This adhesive is guaranteed for the life of the installation when used in accordance with the EF Contract Carpet Installation Handbook. Commercialon Premium Modular Adhesive meets the CRI Low-VOC Emission Criteria. Commercialon Premium Modular Adhesive is nontoxic, has ultra-low odor and is antimicrobial in the dry state.

Optional

TILETABS

High Tack Adhesive Tabs (modular only)

Technologies

PROTEX® SOIL RELEASE

ProTex is a proprietary soil release technology that is applied and bonded to the pile fiber to impede soiling and to improve cleanability. It is standard on all EF Contract flooring products.

Optional

PROSEPT® ANTIMICROBIAL

SENTIR® ADVANCED ODOR-BLOCKING TECHNOLOGY

©2018 Engineered Floors LLC - This unique design is protected under the U.S. Copyright Act of 1976. Any unauthorized copying or duplication of this design constitutes copyright infringement in violation of federal law.

Due to the unique visual characteristics of modular carpets, pattern repeats and pattern run-off seams may appear more noticeable than in broadloom carpets. Such visual characteristics do not constitute a manufacturing defect, and as such, should be considered when selecting modular carpet and its installation. These photographs are representations of the installation for this modular product. Your modular installation may look different than these photos depending upon individual tile placement, lighting and overall space layout, including furnishings. Final tile placement and the resulting visual is thus the customer’s, and not EF Contract’s, responsibility.

To learn more, visit:

EFCONTRACTFLOORING.COM

STYLE	BATISTE II TBTT	BATISTE II BTT
CONSTRUCTION	TEXTURED LOOP PATTERN	TEXTURED LOOP PATTERN
FIBER TYPE	100% ENCORE® SD ULTIMA® NYLON (with recycled content)	100% ENCORE® SD ULTIMA® NYLON (with recycled content)
DYE METHOD	SOLUTION DYED	SOLUTION DYED
OUNCE WEIGHT	22 OZ / SQUARE YARD	22 OZ / SQUARE YARD
GAUGE	1/10 IN	1/10 IN
BACKING	NEXUS® MODULAR	PREMIERBAC® PLUS
SIZE	12" W X 48" L	12 FOOT ROLL
PATTERN REPEAT	N/A	18" W X 24" L
FINISHED PILE THICKNESS	.110 INCHES	.115 INCHES
SPECIAL TECHNOLOGY	PROTEX® SOIL RELEASE	PROTEX® SOIL RELEASE

OPTIONAL SPECIAL TECHNOLOGIES	PROSEPT® ANTIMICROBIAL SENTIR® ADVANCED ODOR BLOCKING TREATMENT	PROSEPT® ANTIMICROBIAL SENTIR® ADVANCED ODOR BLOCKING TREATMENT
--------------------------------------	--	--

PHYSICAL TESTING	FLOORING RADIANT PANEL - (CLASS 1) PILL TEST - (PASSES) SMOKE DENSITY - (LESS THAN 450 FLAMING) STATIC GENERATION - (LESS THAN 3.5 KV)	FLOORING RADIANT PANEL - (CLASS 1) PILL TEST - (PASSES) SMOKE DENSITY - (LESS THAN 450 FLAMING) STATIC GENERATION - (LESS THAN 3.5 KV)
-------------------------	---	---

WARRANTIES	LIFETIME FIBER PERFORMANCE FOR WEAR LIFETIME FIBER PERFORMANCE FOR STATIC LIFETIME STAIN REMOVAL LIFETIME COLORFASTNESS TO LIGHT AND ATMOSPHERIC CONTAMINANTS LIFETIME FOR TUFT BIND STRENGTH (EDGE RAVEL, YARN PULLS, ZIPPERING) LIFETIME AGAINST DELAMINATION LIFETIME DIMENSIONAL STABILITY	LIFETIME FIBER PERFORMANCE FOR WEAR LIFETIME FIBER PERFORMANCE FOR STATIC LIFETIME STAIN REMOVAL LIFETIME COLORFASTNESS TO LIGHT AND ATMOSPHERIC CONTAMINANTS 10 YEAR FOR TUFT BIND STRENGTH (EDGE RAVEL, YARN PULLS, ZIPPERING) 10 YEAR AGAINST DELAMINATION
-------------------	--	--

RECOMMENDED INSTALLATION METHODS

12" X 48" PLANKS

ASHLAR BASKETWEAVE PARQUET HERRINGBONE MONOLITHIC

12' ROLL

REDUCE REUSE RECYCLE RETURN

Can be installed Glue-Free with TileTabs® Nexus® Tile Connectors



1502 Coronet Drive
Dalton, Georgia 30720
U.S.A.

800.451.1250
efcontractflooring.com