



Quickship

Artisan

MODULAR CARPET

 EF Contract®



We're EF Contract.

Part of the fastest-growing, most progressive family of flooring companies, we stand for confidence in quality, relentless service and doing right by all.

Our products are inspired by you: offering the carpet and hard-surface flooring that you want and need, that you've been seeking but unable to find, until now.

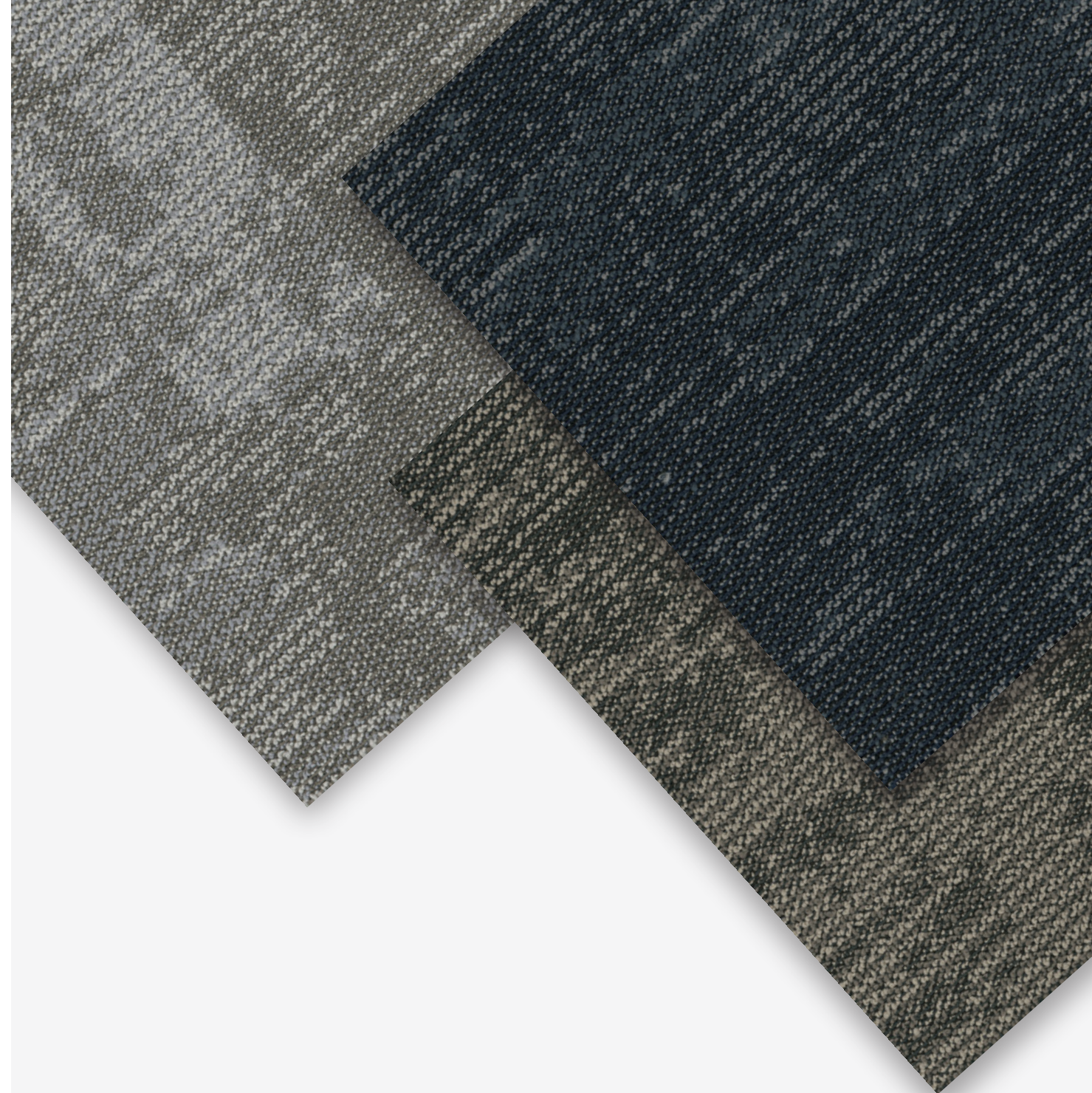
Every collection, pattern and colorway is created with best in class performance and in pursuit of design that is simply beautiful.

It's always simple to work with EF Contract. With our Quickship program, it's also faster than ever before.

Every product in these collections is shipped (1,500 yards or less) within 10 business days of your order — all with remarkable service. Every project, every time. For more information, contact your Account Executive or call 800-451-1250.

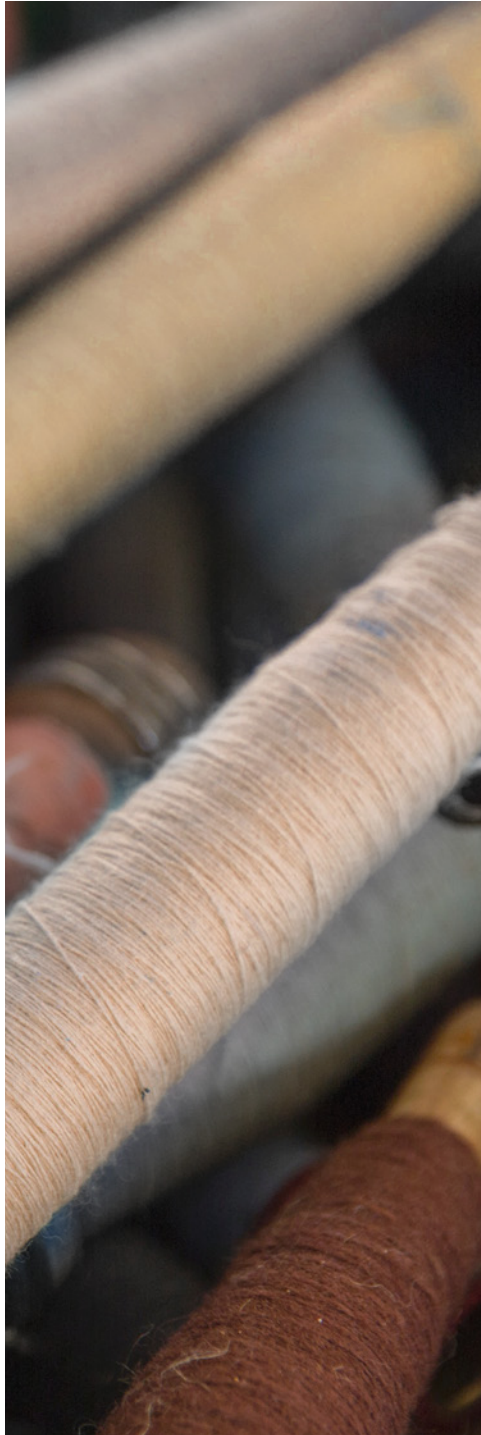


ARTISAN - MOLESKIN



Artisan

Artisan pays tribute to the beauty and quality of made objects. Demonstrating skillfulness and attention to detail, this textural pattern is both fashionably organic and timeless.



ARTISAN - FOLIAGE



ARTISAN - DAMSON



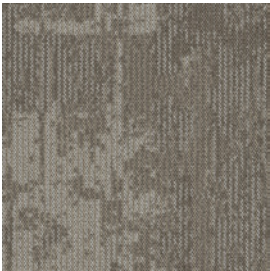


ARTISAN - MOLESKIN / ARTISAN - BERYL





ARTISAN



ARTISAN | ART75
TAUPE



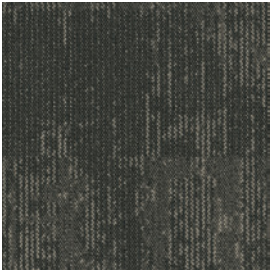
ARTISAN | ART56
MOLESKIN



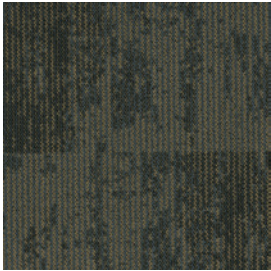
ARTISAN | ART76
SMOKE



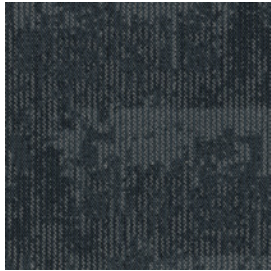
ARTISAN | ART77
WREN



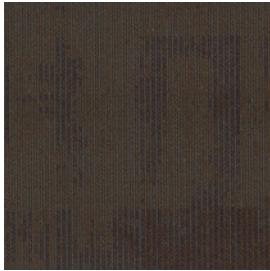
ARTISAN | ART58
SLOE



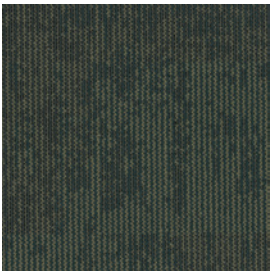
ARTISAN | ART47
FOLIAGE



ARTISAN | ART49
BICE



ARTISAN | ART98
DAMSON



ARTISAN | ART38
BERYL

Style	ARTISAN TART
Fiber Type	ENCORE® SD™ ULTIMA NYLON
Dye Method	SOLUTION DYED
Ounce Weight	15 OZ / YD2
Gauge	1/12 IN
Backing	NEXUS® MODULAR
Density	6,429
Size	24" W X 24" L

PRODUCT DETAILS

Fiber

ENCORE® SD ULTIMA® (WITH RECYCLED CONTENT)

Encore SD Ultima is specifically engineered to maximize appearance retention with exceptional color, performance, sustainability and practicality.

Moisture

Are high levels of moisture in your concrete slab causing issues with your project’s floor covering? We can help.

- Nexus Modular Carpet with TileTabs - 99% RH
- Cost-efficient
- Long-term performance
- Straightforward, easy-to-understand Lifetime warranty
- Requires no special floor preparation

RH/pH Warranty

Warranty: Installed With TileTabs	Lifetime
Warranty: Installed With Commercialon® Premium Adhesive (non-prorated)	Lifetime
Warranty: Installed With Any Other Adhesive	1 year
Max RH, pH Installed Without Sealer	90% RH, pH 9
Max RH, pH Installed With Commercialon® Premium Sealer	99% RH, pH 11 (TileTabs) -- 97% RH, pH 11 (Commercialon)

Backings

NEXUS® MODULAR

Nexus modular products can be installed in a variety of ways and are performance engineered to be visually appealing. In addition, they are designed to accommodate your long-term flooring budget.

- Contains pre-consumer recycled content and contributes to LEED
- Recyclable through EF Contract’s R4 Carpet Reclamation Program

Adhesives

COMMERCIALON® PREMIUM MODULAR ADHESIVE
A high-strength acrylic latex-based carpet adhesive specifically formulated for bonding modular PVC-backed carpet to the floor. This premium adhesive is for use with all Nexus Modular Tile products. This adhesive is guaranteed for the life of the installation when used in accordance with the EF Contract Carpet Installation Handbook. Commercialon Premium Modular Adhesive meets the CRI Low-VOC Emission Criteria. Commercialon Premium Modular Adhesive is nontoxic, has ultra-low odor and is antimicrobial in the dry state.

Optional

TILETABS®
High Tack Adhesive Tabs (modular only)

Technologies

PROTEX® SOIL RELEASE
ProTex is a proprietary soil release technology that is applied and bonded to the pile fiber to impede soiling and to improve cleanability. It is standard on all EF Contract flooring products.

Optional

PROSEPT® ANTIMICROBIAL

SENTIR® ADVANCED ODOR-BLOCKING TECHNOLOGY

©2019 Engineered Floors LLC - This unique design is protected under the U.S. Copyright Act of 1976. Any unauthorized copying or duplication of this design constitutes copyright infringement in violation of federal law.

Due to the unique visual characteristics of modular carpets, pattern repeats and pattern run-off seams may appear more noticeable than in broadloom carpets. Such visual characteristics do not constitute a manufacturing defect, and as such, should be considered when selecting modular carpet and its installation. These photographs are representations of the installation for this modular product. Your modular installation may look different than these photos depending upon individual tile placement, lighting and overall space layout, including furnishings. Final tile placement and the resulting visual is thus the customer’s, and not EF Contract’s, responsibility.

To learn more, visit:

EFCONTRACTFLOORING.COM

STYLE	ARTISAN TART
CONSTRUCTION	TEXTURED LOOP
FIBER TYPE	ENCORE® SD™ ULTIMA NYLON
DYE METHOD	SOLUTION DYED
OUNCE WEIGHT	15 OZ / YD2
GAUGE	1/12 IN
BACKING	NEXUS® MODULAR
SIZE	24" W X 24" L
PATTERN REPEAT	N/A
FINISHED PILE THICKNESS	.084 INCHES
SPECIAL TECHNOLOGY	PROTEX® SOIL RELEASE
OPTIONAL SPECIAL TECHNOLOGIES	PROSEPT® ANTIMICROBIAL SENTIR® ADVANCED ODOR BLOCKING TREATMENT
PHYSICAL TESTING	FLOORING RADIANT PANEL – (CLASS 1) PILL TEST – (PASSES) SMOKE DENSITY – (LESS THAN 450 FLAMING) STATIC GENERATION – (LESS THAN 3.5 KV)
WARRANTIES	LIFETIME FIBER PERFORMANCE FOR WEAR LIFETIME FIBER PERFORMANCE FOR STATIC LIFETIME STAIN REMOVAL LIFETIME COLORFASTNESS TO LIGHT AND ATMOSPHERIC CONTAMINANTS LIFETIME FOR TUFT BIND STRENGTH (EDGE RAVEL, YARN PULLS, ZIPPERING) LIFETIME AGAINST DELAMINATION LIFETIME DIMENSIONAL STABILITY

RECOMMENDED
INSTALLATION
METHODS

↑

→

→

↑

QUARTER
TURN

↑

↑

↑

↑

ASHLAR

↑

↑

↑

↑

↑

↑

BRICK

↑

↑

↑

↑

MONOLITHIC



1502 Coronet Drive
Dalton, Georgia 30720
U.S.A.

800.451.1250
efcontractflooring.com