

Arrive + Depart

WALK-OFF MODULAR CARPET





Arrive + Depart

Since 85% of carpet soil and other contaminants come into the building on shoe soles, we also recommend using entryway systems at all entrances to trap and hold dirt and other pathogens before they are tracked into interior floor surfaces. A minimum of 15-ft. of entryway system is needed.



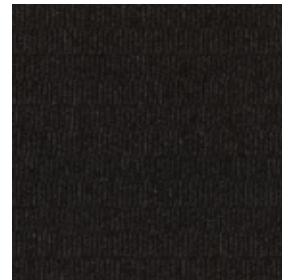
ARRIVE 24" x 24" MODULAR



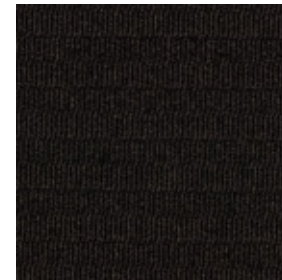
ARV44
BLUE MOON



ARV56
FLINT



ARV58
EBONY



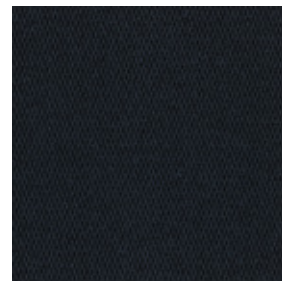
ARV74
SEPIA

SCAN ME!

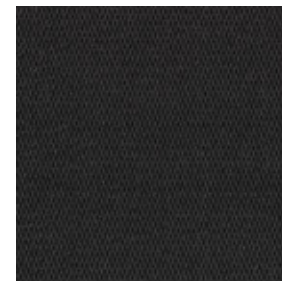


Scan to order
samples or
check inventory.

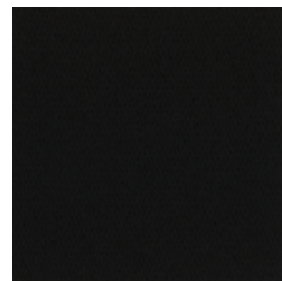
DEPART 24" x 24" MODULAR



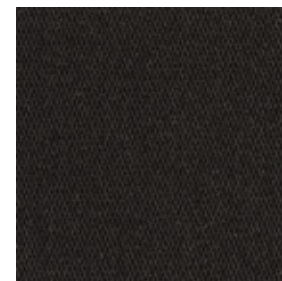
DEP45
TEAL



DEP57
PEWTER



DEP59
BLACK



DEP75
BAY

SCAN ME!



Scan to order
samples or
check inventory.

PRODUCT DETAILS

Fiber

ENCORE® SD (WITH RECYCLED CONTENT) AND TERAPLEX® SD

The hybrid fiber system of Landline combines the best of Encore SD and TeraPlex® SD. Encore® SD is specifically engineered to maximize appearance retention with exceptional color, performance, sustainability and practicality. TeraPlex® SD is engineered to maximize appearance retention with exceptional color, performance, sustainability and practicality. TeraPlex® SD is an advanced GEN III continuous filament PET fiber for today's commercial flooring. Introduced after 30 years of intensive R&D by leading polymer scientists, it utilizes the best PET resin to create a resilient carpet fiber with exceptional clarity and stain-resistance properties.

Backings

NEXUS® MODULAR

Nexus modular products can be installed in a variety of ways and are performance engineered to be visually appealing. In addition, they are designed to accommodate your long-term flooring budget.

- Contains pre-consumer recycled content and contributes to LEED
- Recyclable through EF Contract's R4 Carpet Reclamation Program



Warranty: Installed With TileTabs	Lifetime
Warranty: Installed With Commercialon® Premium Adhesive (non-prorated)	Lifetime
Warranty: Installed With Any Other Adhesive	1 year
Max RH, pH Installed Without Commercialon® Sealer	90% RH, pH 9
Max RH, pH Installed With Commercialon® Premium Sealer	99% RH, pH 11 (TileTabs) — 97% RH, pH 11 (Commercialon)
Max RH, pH Installed With Commercialon® High Moisture Adhesive	99% RH, pH 12

Moisture

Are high levels of moisture in your concrete slab causing issues with your project's floor covering? We can help.

- Nexus Modular Carpet with TileTabs - 99% RH
- Cost-efficient
- Long-term performance
- Straightforward, easy-to-understand Lifetime warranty
- Requires no special floor preparation

Adhesives

COMMERCIALON® PREMIUM MODULAR ADHESIVE
A high-strength acrylic latex-based carpet adhesive specifically formulated for bonding modular PVC backed carpet to the floor. This premium adhesive is for use with all Nexus Modular Tile products. This adhesive is guaranteed for the life of the installation when used in accordance with the EF Contract Carpet Installation Handbook. Commercialon Premium Modular Adhesive meets the CRI Low-VOC Emission Criteria. Commercialon Premium Modular Adhesive is nontoxic, has ultra-low odor and is antimicrobial in the dry state.

Optional

TILETABS

High Tack Adhesive Tabs (modular only)

COMMERCIALON® HIGH MOISTURE ADHESIVE

Technologies

PROTEX® SOIL RELEASE

ProTex is a proprietary soil release technology that is applied and bonded to the pile fiber to impede soiling and to improve cleanability. It is standard on all EF Contract flooring products

Optional

PROSEPT® ANTIMICROBIAL

SENTIR® ADVANCED ODOR-BLOCKING TECHNOLOGY

©2023 Engineered Floors LLC - This unique design is protected under the U.S. Copyright Act of 1976. Any unauthorized copying or duplication of this design constitutes copyright infringement in violation of federal law.

Due to the unique visual characteristics of modular carpets, pattern repeats and pattern run-off seams may appear more noticeable than in broadloom carpets. Such visual characteristics do not constitute a manufacturing defect, and as such, should be considered when selecting modular carpet and its installation. These photographs are representations of the installation for this modular product. Your modular installation may look different than these photos depending upon individual tile placement, lighting and overall space layout, including furnishings. Final tile placement and the resulting visual is thus the customer's, and not EF Contract's, responsibility.

To learn more, visit:

EFCONTRACT.COM

PRODUCT DETAILS

STYLE	ARRIVE TARV	DEPART TDEP
CONSTRUCTION	TEXTURED LOOP	TEXTURED LOOP
FIBER TYPE	ENCORE® SD NYLON WITH TERAPLEX® SD	ENCORE® SD NYLON WITH TERAPLEX® SD
DYE METHOD	SOLUTION DYED	SOLUTION DYED
OUNCE WEIGHT	26 OZ / SQUARE YARD	26 OZ / SQUARE YARD
GAUGE	1/10 IN	1/10 IN
BACKING	NEXUS® MODULAR	NEXUS® MODULAR
DENSITY	6,592	7,610
FINISHED PILE THICKNESS	0.142 INCHES	0.142 INCHES
SIZE	24" W X 24" L	24" W X 24" L
TOTAL THICKNESS	0.301 INCHES	0.301 INCHES
SPECIAL TECHNOLOGY	PROTEX® SOIL RELEASE	PROTEX® SOIL RELEASE
OPTIONAL SPECIAL TECHNOLOGIES	PROSEPT® ANTIMICROBIAL SENTIR® ADVANCED ODOR BLOCKING TREATMENT	PROSEPT® ANTIMICROBIAL SENTIR® ADVANCED ODOR BLOCKING TREATMENT
PHYSICAL TESTING	FLOORING RADIANT PANEL (CLASS 1) PILL TEST – (PASSES) SMOKE DENSITY (LESS THAN 450 FLAMING) STATIC GENERATION -(LESS THAN 3.5 KV) ADA COMPLIANCE (COMPLIANT FOR ACCESSIBLE ROUTES)	FLOORING RADIANT PANEL (CLASS 1) PILL TEST – (PASSES) SMOKE DENSITY (LESS THAN 450 FLAMING) STATIC GENERATION -(LESS THAN 3.5 KV) ADA COMPLIANCE (COMPLIANT FOR ACCESSIBLE ROUTES)
FIBER WARRANTY	LIFETIME FIBER PERFORMANCE FOR WEAR LIFETIME FIBER PERFORMANCE FOR STATIC LIFETIME STAIN REMOVAL LIFETIME COLORFASTNESS TO LIGHT AND ATMOSPHERIC CONTAMINANTS	LIFETIME FIBER PERFORMANCE FOR WEAR LIFETIME FIBER PERFORMANCE FOR STATIC LIFETIME STAIN REMOVAL LIFETIME COLORFASTNESS TO LIGHT AND ATMOSPHERIC CONTAMINANTS
BACKING WARRANTY	LIFETIME FOR TUFT BIND STRENGTH (EDGE RAVEL, YARN PULLS, ZIPPERING) LIFETIME AGAINST DELAMINATION LIFETIME DIMENSIONAL STABILITY	LIFETIME FOR TUFT BIND STRENGTH (EDGE RAVEL, YARN PULLS, ZIPPERING) LIFETIME AGAINST DELAMINATION LIFETIME DIMENSIONAL STABILITY

RECOMMENDED INSTALLATION METHODS



QUARTER TURN



 **EF Contract**[®]

PO Box 2207
Dalton, Georgia 30722
U.S.A.

800.451.1250
efcontract.com
AX1623M08