

Anthology Collection

Designer's Choice

First Class

VIP

Modern Classic

MODULAR CARPET



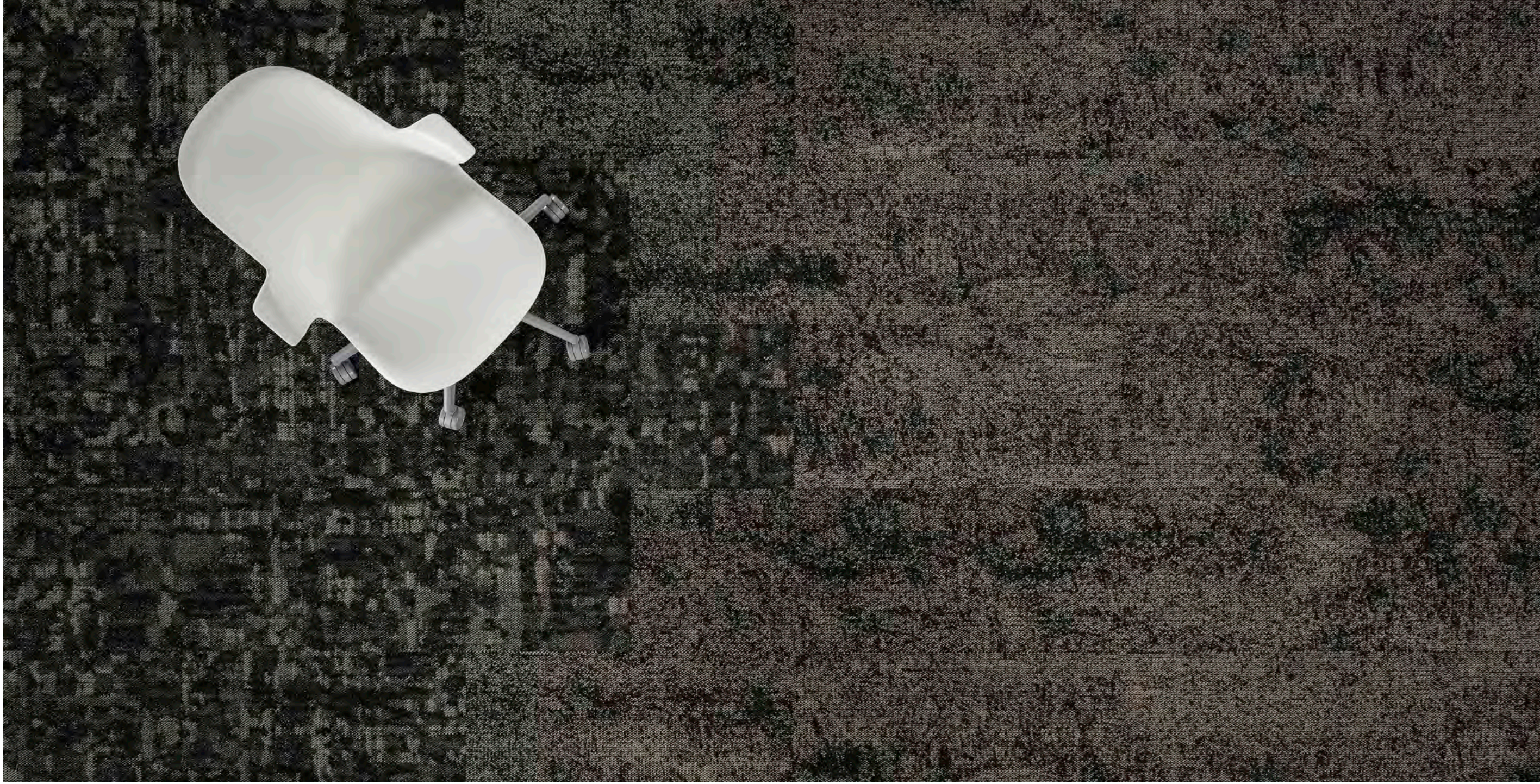


Anthology Collection

The Anthology Collection is a treasury of four distinct styles, each designed to work on its own or in combination with one another. With its bold, broken brushstrokes over neutral backgrounds, **Designer's Choice** alludes to abstract expressionism, creating an eclectic, impactful design vibe. **First Class** layers fragmented tonal texture to create timeless and extremely versatile design. **VIP** features a flowing tone-on-tone silhouetted motif that is chic and elevated, yet, warm and inviting. **Modern Classic** mimics a gentle herringbone knit-stitch that provides a clean backdrop with a sense of modern tranquility. Each style in The Anthology Collection features seven nature-inspired colors, including clay-toned browns, beiges, stone greys and dusky blues in 18" x 36" tiles.





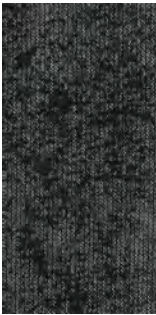




VIP



VIP72
IMPORTANT



VIP59
CELEBRITY



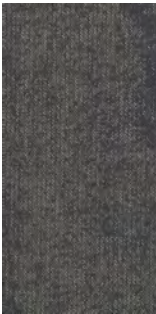
VIP78
FAMOUS



VIP51
SUPERSTAR



VIP54
LUXURIOUS



VIP45
PERSONALITY



VIP49
FIGURE

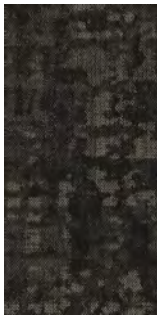
FIRST CLASS



FCS72
CLASSIFICATION



FCS59
QUALITY



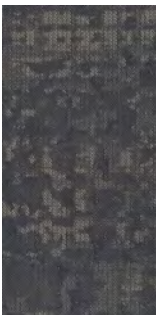
FCS78
FIVE-STAR



FCS51
EXCELLENT



FCS54
GRADE A



FCS45
PREMIUM



FCS49
PRIME

18" x 36" MODULAR

SCAN ME!



Scan to order
samples or
check inventory.

18" x 36" MODULAR

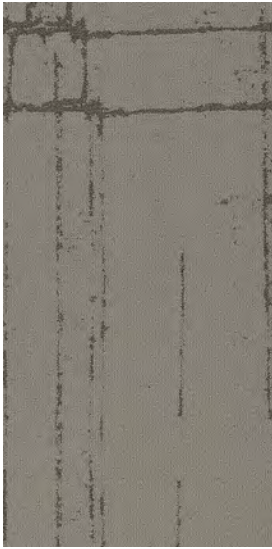
SCAN ME!



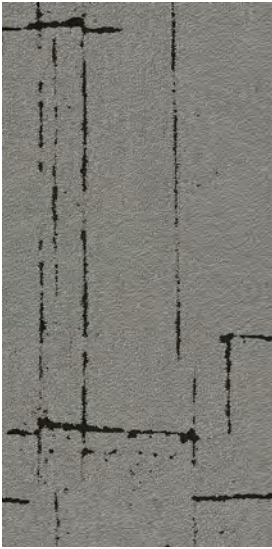
Scan to order
samples or
check inventory.

DESIGNER'S CHOICE

18" x 36" MODULAR



DRC72
INTERIOR



DRC59
AUTHOR



DRC78
FOUNDER



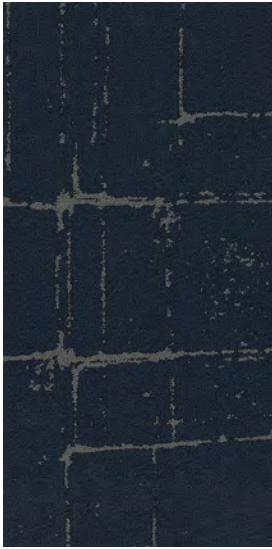
DRC51
DECISION



DRC54
AUDIENCE



DRC45
STYLISTIC



DRC49
PATTERN

SCAN ME!



Scan to order
samples or
check inventory.

MODERN CLASSIC

18" x 36" MODULAR



MCC72
POLISHED



MCC59
MASTERPIECE



MCC78
STYLISH



MCC51
NOVEL



MCC54
BEAUTIFUL



MCC45
UP-TO-DATE



MCC49
UPSCALE

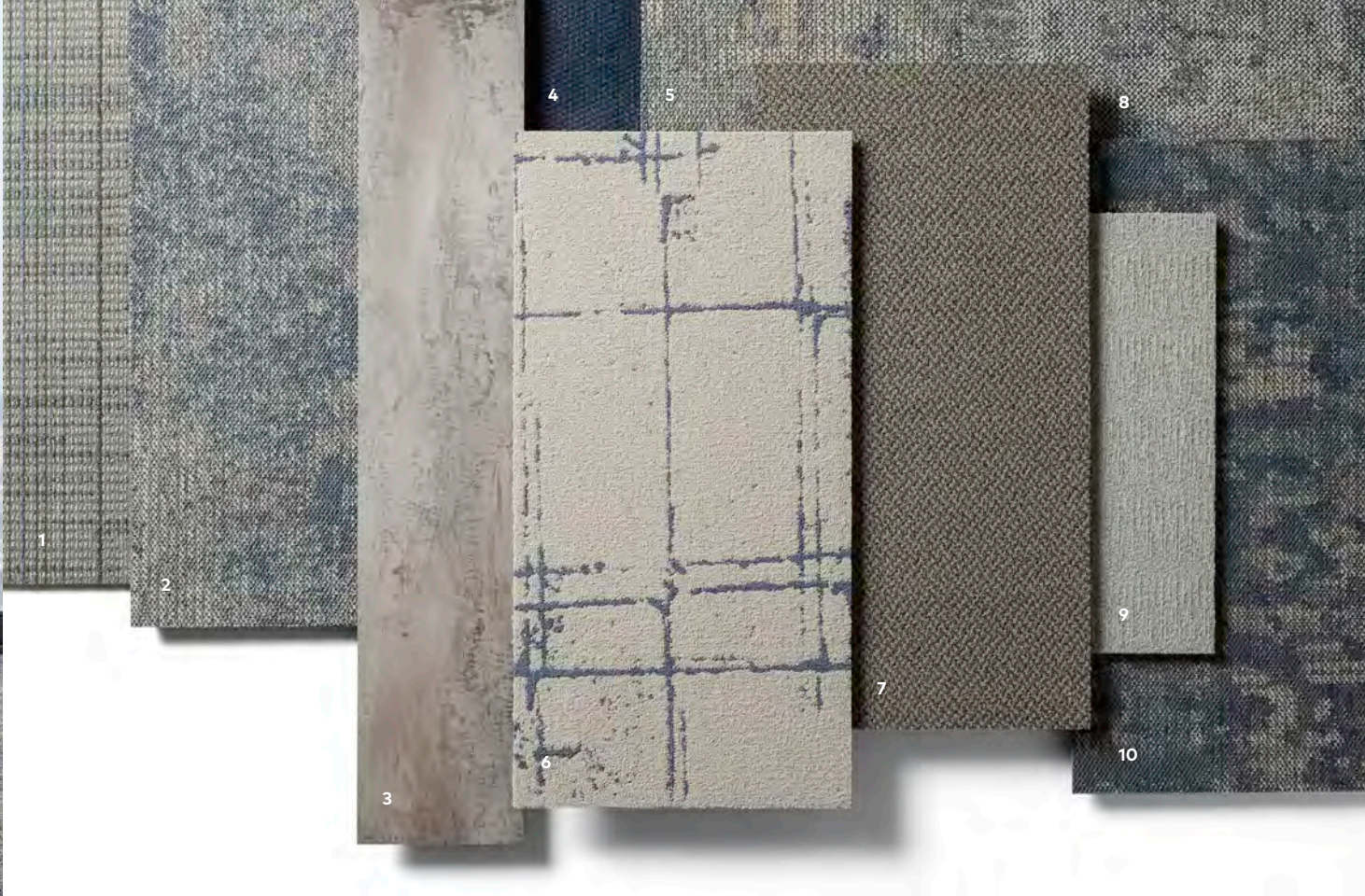
SCAN ME!



Scan to order
samples or
check inventory.



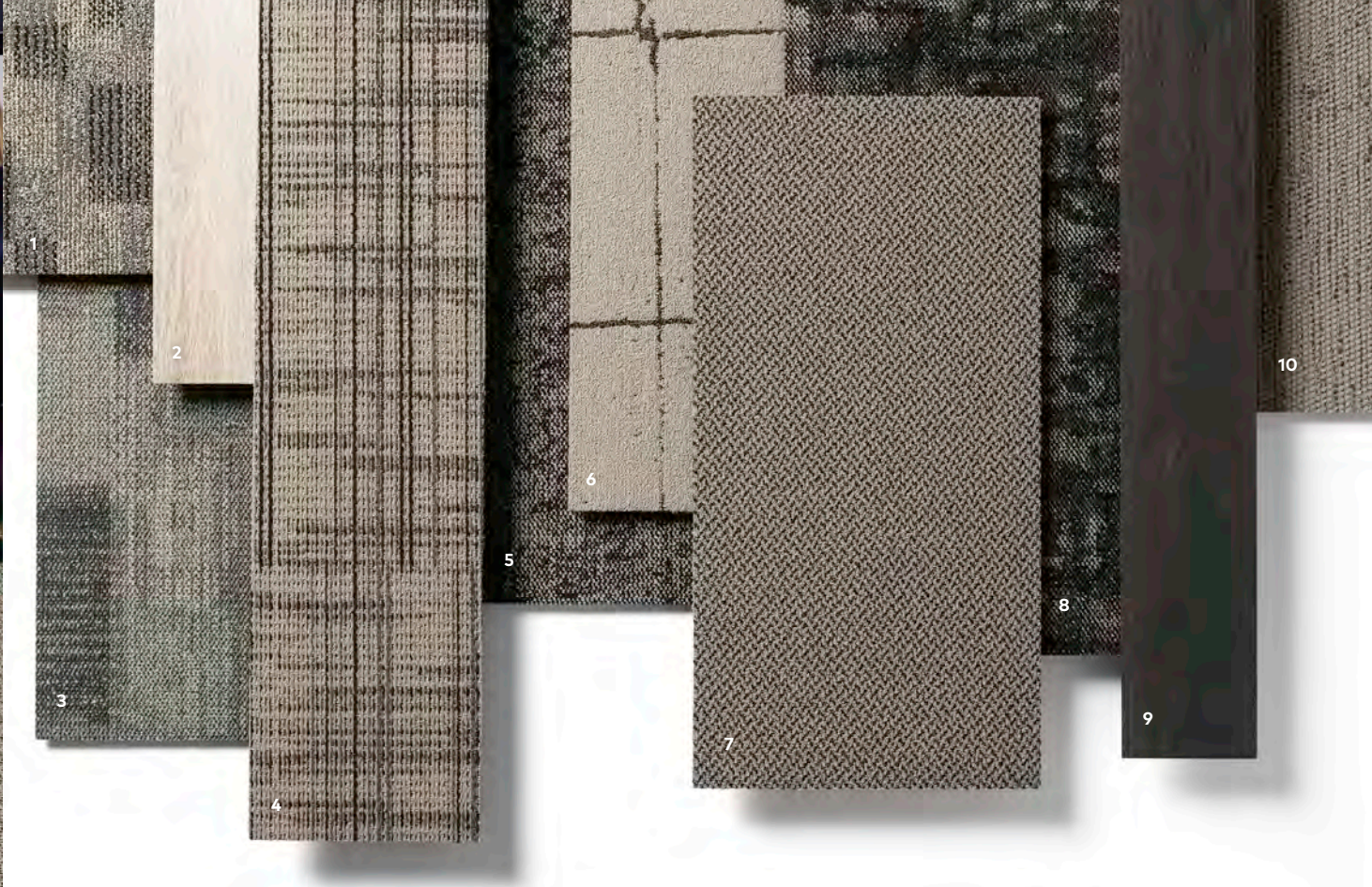
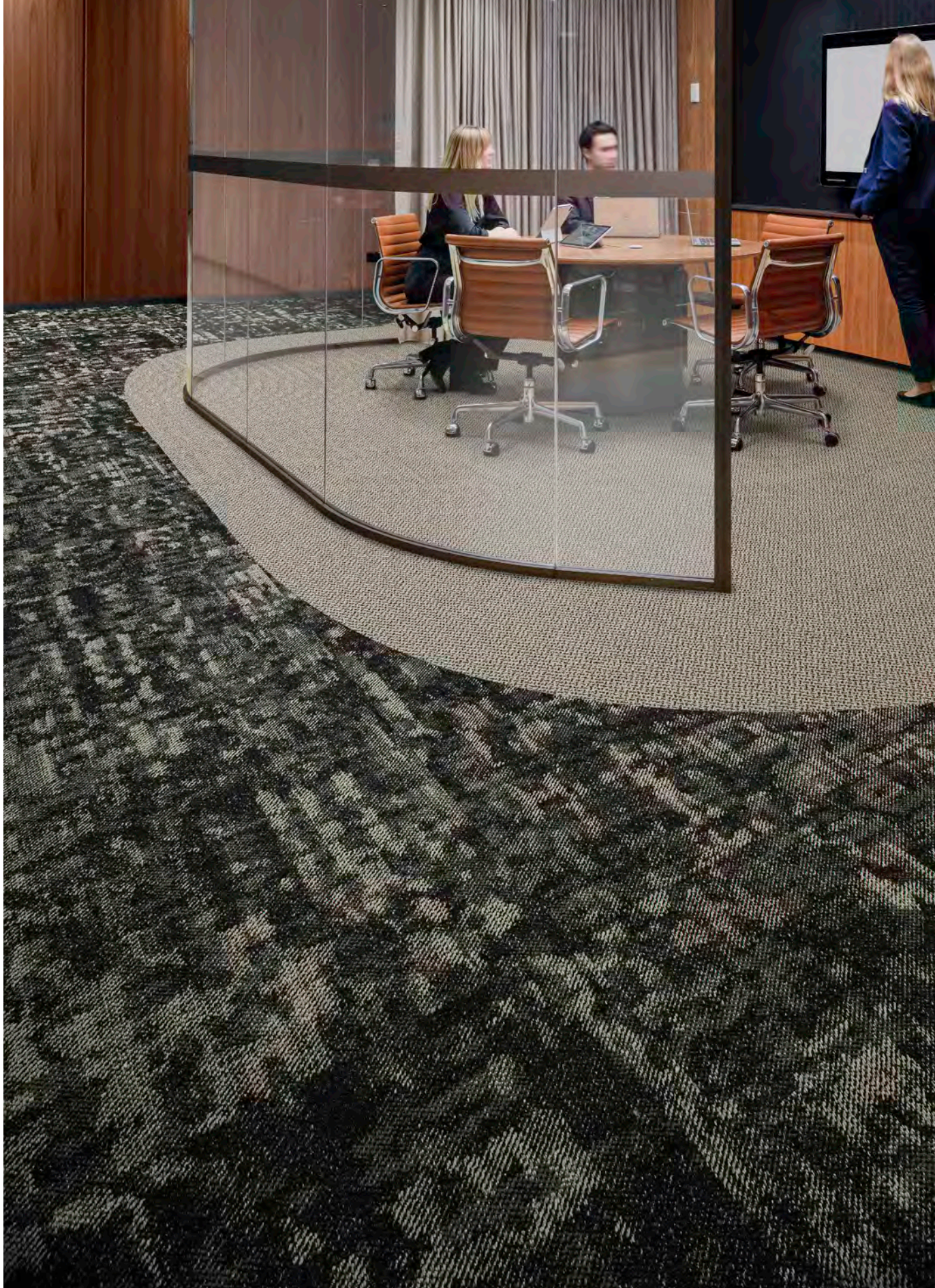




COORDINATING PALETTES

Beyond the beauty of individual products, EF Contract's flooring **coordinate effortlessly** across all of our product platforms - modular carpet tile, broadloom, LVT and Kinetex textile composite flooring. This offering enables you to blend a range of designs to create **palettes** that meet the demands of each unique space.

1	CROSSING II - SHADOW	CSS45	MODULAR & BROADLOOM
2	VIP - PERSONALITY	VIP45	MODULAR
3	MELANGE - URBAN	004	LVT
4	IMPRINT - NAVY	IMP49	KINETEX
5	INTERCHANGEABLE - ALTERATION	INT43	MODULAR
6	DESIGNER'S CHOICE - STYLISTIC	DRC45	MODULAR
7	MODERN CLASSIC - UP-TO-DATE	MCC45	MODULAR
8	MUSICAL - GILDED	MUS45	MODULAR
9	WATERCOLORS - SMOKE	WTC51	MODULAR
10	FIRST CLASS - PREMIUM	FCS45	MODULAR



COORDINATING PALETTES

Beyond the beauty of individual products, EF Contract's flooring **coordinate effortlessly** across all of our product platforms - modular carpet tile, broadloom, LVT and Kinetex textile composite flooring. This offering enables you to blend a range of designs to create **palettes** that meet the demands of each unique space.

1	UP TEMPO - SWING	TEM18	MODULAR
2	WOODLANDS II - SILVER ASH	009	LVT
3	TRUSTWORTHY - SIMILAR	TRY15	MODULAR
4	CROSSING II - CORDUROY	CSS76	MODULAR & BROADLOOM
5	VIP - FAMOUS	VIP78	MODULAR
6	DESIGNER'S CHOICE - FOUNDER	DRC78	MODULAR
7	MODERN CLASSIC - STYLISH	MCC78	MODULAR
8	FIRST CLASS - FIVE-STAR	FCS78	MODULAR
9	PLAYBOOK - SHADOW	010	LVT
10	CASCADE - SPLASH	CSC24	KINETEX





PRODUCT DETAILS

Fiber

100% ENCORE® SD ULTIMA® NYLON
(WITH RECYCLED CONTENT)

Encore SD Ultima is specifically engineered to maximize appearance retention with exceptional color, performance, sustainability and practicality.

FIBER OPTION

ENCORE® 100
The high recycled content incorporated into Encore 100 nylon provides a reduced environmental impact without compromising quality or color clarity.

- 100% post-industrial (pre-consumer) recycled content
- Full inclusion into the EF Contract’s Flooring Reclamation Program
- Lifetime warranty for stain removal, colorfastness, wear and static
- See sales rep for for availability and price

Standard Backing

NEXUS® MODULAR
Nexus modular products can be installed in a variety of ways and are performance engineered to be visually appealing. In addition, they are designed to accommodate your long-term flooring budget.

- Contains pre-consumer recycled content and contributes to LEED
- Recyclable through EF Contract’s Flooring Reclamation Program

OPTIONAL BACKING

ADVANCE MODULAR CARPET BACKING™
is engineered to provide outstanding performance, protection and stability that is required of modular carpet systems.

- PVC-Free
- Contains recycled content and contributes to LEED
- Eligible for landfill diversion through the EF Contract’s Flooring Reclamation Program

Moisture

Are high levels of moisture in your concrete slab causing issues with your project’s floor covering? We can help.

- Nexus Modular Carpet with TileTabs - 99% RH
- Cost-efficient
- Long-term performance
- Straightforward, easy-to-understand Lifetime warranty
- Requires no special floor preparation

©2025 Engineered Floors LLC - This unique design is protected under the U.S. Copyright Act of 1976. Any unauthorized copying or duplication of this design constitutes copyright infringement in violation of federal law.

Due to the unique visual characteristics of modular carpets, pattern repeats and pattern run-off seams may appear more noticeable than in broadloom carpets. Such visual characteristics do not constitute a manufacturing defect, and as such, should be considered when selecting modular carpet and its installation. These photographs are representations of the installation for this modular product. Your modular installation may look different than these photos depending upon individual tile placement, lighting and overall space layout, including furnishings. Final tile placement and the resulting visual is thus the customer’s, and not EF Contract’s, responsibility.

To learn more, visit: EFCONTRACT.COM

Adhesives

COMMERCIALON® PREMIUM MODULAR ADHESIVE
A high-strength acrylic latex-based carpet adhesive specifically formulated for bonding modular PVC backed carpet to the floor. This premium adhesive is for use with all Nexus Modular Tile products. This adhesive is guaranteed for the life of the installation when used in accordance with the EF Contract Carpet Installation Handbook. Commercialon Premium Modular Adhesive meets the CRI Low-VOC Emission Criteria. Commercialon Premium Modular Adhesive is nontoxic, has ultra-low odor and is antimicrobial in the dry state.

Optional

TILETABS
High Tack Adhesive Tabs (modular only)

Technologies

PROTEX® SOIL RELEASE
ProTex is a proprietary soil release technology that is applied and bonded to the pile fiber to impede soiling and to improve cleanability. It is standard on all EF Contract flooring products

Optional


PROSEPT® ANTIMICROBIAL
SENTIR® ADVANCED ODOR-BLOCKING TECHNOLOGY

Warranty: Installed With TileTabs	Lifetime
Warranty: Installed With Commercialon® Premium Adhesive (non-prorated)	Lifetime
Warranty: Installed With Any Other Adhesive	1 year
Max RH, pH Installed Without Commercialon® Sealer	90% RH, pH 9
Max RH, pH Installed With Commercialon® Premium Sealer	99% RH, pH 11 (TileTabs) — 97% RH, pH 11 (Commercialon)


PRODUCT DETAILS


STYLE	DESIGNER'S CHOICE TDRC	FIRST CLASS TFCS	VIP TVIP	MODERN CLASSIC TMCC
CONSTRUCTION	PATTERNED LOOP	PATTERNED LOOP	PATTERNED LOOP	PATTERNED LOOP
FIBER TYPE	100% ENCORE® SD ULTIMA® NYLON (WITH RECYCLED CONTENT)	100% ENCORE® SD ULTIMA® NYLON (WITH RECYCLED CONTENT)	100% ENCORE® SD ULTIMA® NYLON (WITH RECYCLED CONTENT)	100% ENCORE® SD ULTIMA® NYLON (WITH RECYCLED CONTENT)
FIBER OPTION	ENCORE® 100	ENCORE® 100	ENCORE® 100	ENCORE® 100
DYE METHOD	SOLUTION DYED	SOLUTION DYED	SOLUTION DYED	SOLUTION DYED
OUNCE WEIGHT	24 OZ / SQUARE YARD	16 OZ / SQUARE YARD	16 OZ / SQUARE YARD	19 OZ / SQUARE YARD
GAUGE	1/10 IN	1/8 IN	1/8 IN	1/10 IN
STANDARD BACKING	NEXUS® MODULAR	NEXUS® MODULAR	NEXUS® MODULAR	NEXUS® MODULAR
OPTIONAL BACKING	ADVANCE MODULAR	ADVANCE MODULAR	ADVANCE MODULAR	ADVANCE MODULAR
SIZE	18" X 36"	18" X 36"	18" X 36"	18" X 36"
PATTERN REPEAT	N/A	N/A	N/A	N/A
TOTAL THICKNESS	0.316 INCHES	0.242 INCHES	0.243 INCHES	0.249 INCHES
SPECIAL TECHNOLOGY	PROTEX® SOIL RELEASE	PROTEX® SOIL RELEASE	PROTEX® SOIL RELEASE	PROTEX® SOIL RELEASE
OPTIONAL SPECIAL TECHNOLOGIES	PROSEPT® ANTIMICROBIAL SENTIR® ADVANCED ODOR BLOCKING TREATMENT	PROSEPT® ANTIMICROBIAL SENTIR® ADVANCED ODOR BLOCKING TREATMENT	PROSEPT® ANTIMICROBIAL SENTIR® ADVANCED ODOR BLOCKING TREATMENT	PROSEPT® ANTIMICROBIAL SENTIR® ADVANCED ODOR BLOCKING TREATMENT
PHYSICAL TESTING	FLOORING RADIANT PANEL – (CLASS 1) PILL TEST – (PASSES) SMOKE DENSITY – (LESS THAN 450 FLAMING) STATIC GENERATION – (LESS THAN 3.5 KV)	FLOORING RADIANT PANEL – (CLASS 1) PILL TEST – (PASSES) SMOKE DENSITY – (LESS THAN 450 FLAMING) STATIC GENERATION – (LESS THAN 3.5 KV)	FLOORING RADIANT PANEL – (CLASS 1) PILL TEST – (PASSES) SMOKE DENSITY – (LESS THAN 450 FLAMING) STATIC GENERATION – (LESS THAN 3.5 KV)	FLOORING RADIANT PANEL – (CLASS 1) PILL TEST – (PASSES) SMOKE DENSITY – (LESS THAN 450 FLAMING) STATIC GENERATION – (LESS THAN 3.5 KV)
FIBER WARRANTY	LIFETIME FIBER PERFORMANCE FOR WEAR LIFETIME FIBER PERFORMANCE FOR STATIC LIFETIME STAIN REMOVAL LIFETIME COLORFASTNESS TO LIGHT AND ATMOSPHERIC CONTAMINANTS	LIFETIME FIBER PERFORMANCE FOR WEAR LIFETIME FIBER PERFORMANCE FOR STATIC LIFETIME STAIN REMOVAL LIFETIME COLORFASTNESS TO LIGHT AND ATMOSPHERIC CONTAMINANTS	LIFETIME FIBER PERFORMANCE FOR WEAR LIFETIME FIBER PERFORMANCE FOR STATIC LIFETIME STAIN REMOVAL LIFETIME COLORFASTNESS TO LIGHT AND ATMOSPHERIC CONTAMINANTS	LIFETIME FIBER PERFORMANCE FOR WEAR LIFETIME FIBER PERFORMANCE FOR STATIC LIFETIME STAIN REMOVAL LIFETIME COLORFASTNESS TO LIGHT AND ATMOSPHERIC CONTAMINANTS
BACKING WARRANTY	LIFETIME FOR TUFT BIND STRENGTH (EDGE RAVEL, YARN PULLS, ZIPPERING) LIFETIME AGAINST DELAMINATION LIFETIME DIMENSIONAL STABILITY	LIFETIME FOR TUFT BIND STRENGTH (EDGE RAVEL, YARN PULLS, ZIPPERING) LIFETIME AGAINST DELAMINATION LIFETIME DIMENSIONAL STABILITY	LIFETIME FOR TUFT BIND STRENGTH (EDGE RAVEL, YARN PULLS, ZIPPERING) LIFETIME AGAINST DELAMINATION LIFETIME DIMENSIONAL STABILITY	LIFETIME FOR TUFT BIND STRENGTH (EDGE RAVEL, YARN PULLS, ZIPPERING) LIFETIME AGAINST DELAMINATION LIFETIME DIMENSIONAL STABILITY

RECOMMENDED
INSTALLATION
METHODS


ASHLAR

PARQUET

HERRINGBONE


BASKETWEAVE


BRICK


MONOLITHIC

REDUCE
REUSE
RECYCLE
RETURN






Made in the U.S.A.





PO Box 2207
Dalton, Georgia 30722
U.S.A.

800.451.1250
efcontract.com
JX6524M01