

# Spectral Drift

MODULAR CARPET







## Spectral Drift

Inspired by the brilliance of fractured light, Spectral Drift is designed to provoke a second glance. Proprietary yarn styling and texture enables the pattern to shift as hues gently intermingle, creating a change in perception from different vantage points.

Available as an 18" x 36" modular tile, Spectral Drift offers a palette of 12 colors that includes blended neutral tones and carefully curated color which allows a designer to create subtle effects or add vibrancy with intense chroma.









18" X 36" MODULAR

SPECTRAL DRIFT



SDF20 | ASH



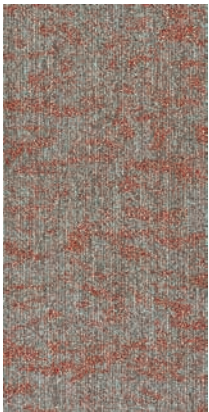
SDF25 | AMBER



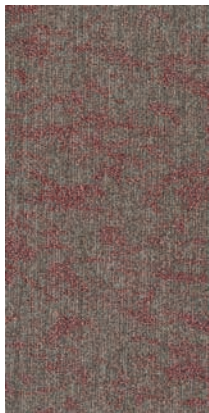
SDF27 | SIENNA



SDF80 | EBONY



SDF86 | FLAME



SDF88 | CRIMSON



SDF40 | SMOKE



SDF45 | AZURE



SDF48 | INDIGO



SDF30 | DOLOMITE



SDF36 | PATINA



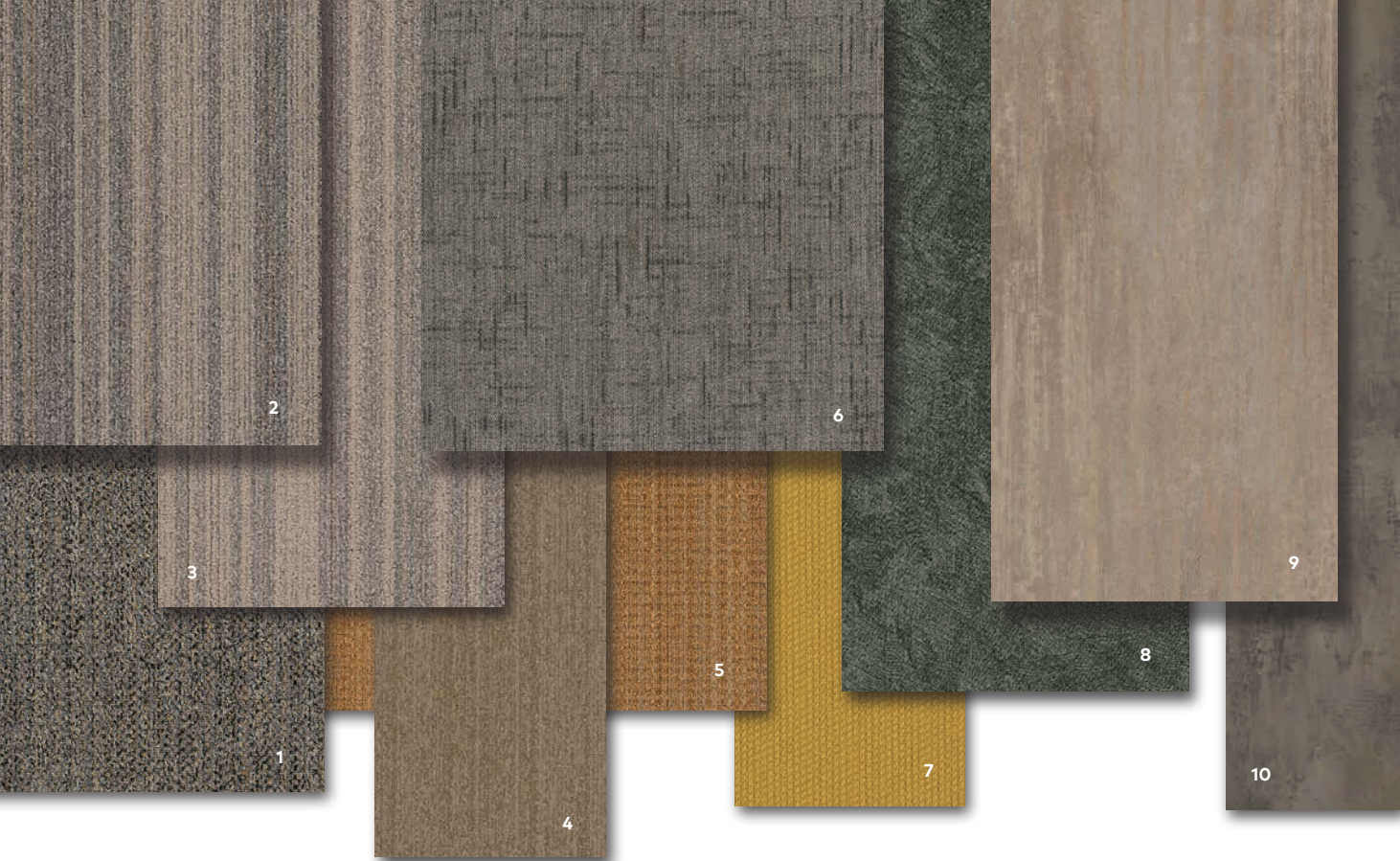
SDF38 | VIRIDIAN

SCAN ME!



Scan to order  
samples or  
check inventory.





### COORDINATING PALETTE

Beyond the beauty of individual products, EF Contract’s flooring **coordinate effortlessly** across all of our product platforms - modular carpet tile, broadloom, LVT and Kinetex textile composite flooring. This offering enables you to blend a range of designs to create **palettes** that meet the demands of each unique space.

1	PAINTED DESERT - CLAY	PAI14	MODULAR & BROADLOOM
2	ALLIANCE - SAFFRON	ALL14	MODULAR
3	ALLIANCE - SAND	ALL11	MODULAR
4	COMMON THREAD - GOLDEN INTUITION	CMT14	MODULAR & BROADLOOM
5	IMMERSE - OCHRE	IMM23	MODULAR & BROADLOOM
6	CROSSWALK - DAPPLE GREY	CWK15	MODULAR & BROADLOOM
7	DART - DASH	DAR25	KINETEX
8	IMPRINT - PEAT	IMP38	KINETEX
9	PLATEAU - UMBRA	003	LVT
10	MELANGE - PHANTOM	006	LVT





Fiber

ENCORE® SD ULTIMA NYLON  
(WITH RECYCLED CONTENT)  
Specifically engineered to maximize appearance retention with exceptional color, performance, sustainability and practicality.

Moisture

Are high levels of moisture in your concrete slab causing issues with your project’s floor covering? We can help.

- Nexus Modular Carpet with TileTabs - 99% RH
- Cost-efficient
- Long-term performance
- Straightforward, easy-to-understand Lifetime warranty
- Requires no special floor preparation

RH/pH Warranty

Warranty: Installed With TileTabs	Lifetime
Warranty: Installed With Commercialon® Premium Adhesive (non-prorated)	Lifetime
Warranty: Installed With Any Other Adhesive	1 year
Max RH, pH Installed Without Commercialon® Sealer	90% RH, pH 9
Max RH, pH Installed With Commercialon® Premium Sealer	99% RH, pH 11 (TileTabs) — 97% RH, pH 11 (Commercialon)

Backings

NEXUS® MODULAR  
Nexus modular products can be installed in a variety of ways and are performance engineered to be visually appealing. In addition, they are designed to accommodate your long-term flooring budget.

- Contains pre-consumer recycled content and contributes to LEED
- Recyclable through EF Contract’s R4 Carpet Reclamation Program

Adhesives

COMMERCIALON® PREMIUM MODULAR ADHESIVE  
A high-strength acrylic latex-based carpet adhesive specifically formulated for bonding modular PVC-backed carpet to the floor. This premium adhesive is for use with all Nexus Modular Tile products. This adhesive is guaranteed for the life of the installation when used in accordance with the EF Contract Carpet Installation Handbook. Commercialon Premium Modular Adhesive meets the CRI Low-VOC Emission Criteria. Commercialon Premium Modular Adhesive is nontoxic, has ultra-low odor and is antimicrobial in the dry state.

Optional

TILETABS  
High Tack Adhesive Tabs (modular only)

Technologies

PROTEX® SOIL RELEASE  
ProTex is a proprietary soil release technology that is applied and bonded to the pile fiber to impede soiling and to improve cleanability. It is standard on all EF Contract flooring products.

Optional

PROSEPT® ANTIMICROBIAL  
SENTIR® ADVANCED ODOR-BLOCKING TECHNOLOGY



©2022 Engineered Floors LLC - This unique design is protected under the U.S. Copyright Act of 1976. Any unauthorized copying or duplication of this design constitutes copyright infringement in violation of federal law.

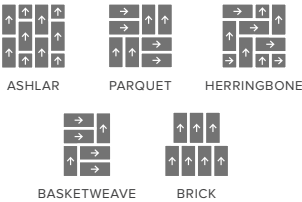
Due to the unique visual characteristics of modular carpets, pattern repeats and pattern run-off seams may appear more noticeable than in broadloom carpets. Such visual characteristics do not constitute a manufacturing defect, and as such, should be considered when selecting modular carpet and its installation. These photographs are representations of the installation for this modular product. Your modular installation may look different than these photos depending upon individual tile placement, lighting and overall space layout, including furnishings. Final tile placement and the resulting visual is thus the customer’s, and not EF Contract’s, responsibility.

To learn more, visit:

EFCONTRACT.COM

STYLE	SPECTRAL DRIFT   TSDF
CONSTRUCTION	PATTERNED SCROLL
FIBER TYPE	100% ENCORE® SD ULTIMA NYLON (WITH RECYCLED CONTENT)
DYE METHOD	SOLUTION DYED
OUNCE WEIGHT	18 OZ / SQUARE YARD
GAUGE	1/12 IN
BACKING	NEXUS® MODULAR
DENSITY	6,894
TOTAL THICKNESS	0.232 INCHES
SIZE	18" X 36"
PATTERN REPEAT	N/A
FINISHED PILE THICKNESS	0.094 INCHES
SPECIAL TECHNOLOGY	PROTEX® SOIL RELEASE
OPTIONAL SPECIAL TECHNOLOGIES	PROSEPT® ANTIMICROBIAL SENTIR® ADVANCED ODOR BLOCKING TREATMENT
PHYSICAL TESTING	FLOORING RADIANT PANEL – (CLASS 1) PILL TEST – (PASSES) SMOKE DENSITY – (LESS THAN 450 FLAMING) STATIC GENERATION – (LESS THAN 3.5 KV)
FIBER WARRANTIES	LIFETIME FIBER PERFORMANCE FOR WEAR LIFETIME FIBER PERFORMANCE FOR STATIC LIFETIME STAIN REMOVAL LIFETIME COLORFASTNESS TO LIGHT AND ATMOSPHERIC CONTAMINANTS
BACKING WARRANTIES	LIFETIME FOR TUFT BIND STRENGTH (EDGE RAVEL, YARN PULLS, ZIPPERING) LIFETIME AGAINST DELAMINATION LIFETIME DIMENSIONAL STABILITY

RECOMMENDED  
INSTALLATION  
METHODS





PO Box 2207  
Dalton, Georgia 30722  
U.S.A.

800.451.1250  
[efcontract.com](http://efcontract.com)  
OX8622M10