

Alliance

MODULAR CARPET





Alliance

A fresh, artisanal approach on the classic pinstripe, Alliance brings into play a robust mix of heathered yarns juxtaposed with bright and metallic accents with a textured hand to create asymmetrical bands of color.

The stripe is a timeless trend that can be equally sophisticated and playful. Alliance's clever pairings of color can take center stage with its clean, modern vibe or may be used to create a more structured backdrop of understated elegance. Get inspired with Alliance's 10 colorways available in 18x36 planks.





18" X 36" MODULAR

ALLIANCE



ALL11 | SAND



ALL14 | SAFFRON



ALL45 | DENIM



ALL51 | GREY TONE



ALL52 | MANDARIN



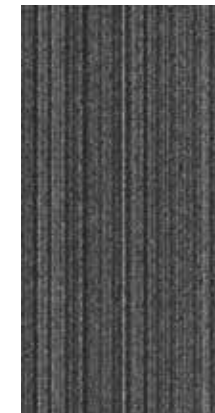
ALL53 | FAWN



ALL54 | ANILINE



ALL56 | VERDANT



ALL58 | BLACKENED



ALL76 | TAUPE

SCAN ME!



Scan to order samples or check inventory.



COORDINATING PALETTE

Beyond the beauty of individual products, EF Contract's flooring **coordinate effortlessly** across all of our product platforms - modular carpet tile, broadloom, LVT and Kinetex textile composite flooring. This offering enables you to blend a range of designs to create **palettes** that meet the demands of each unique space.

1	CREASE - RICE PAPER	CRE12	MODULAR
2	PAINTED DESERT - SHALE	PAI56	MODULAR & BROADLOOM
3	VESTIGE - ASHEN	VES14	KINETEX
4	TIME ZONE - STANDARD TAN	TME78	MODULAR
5	ALFRESCO - OPEN WEAVE	ALF11	MODULAR & BROADLOOM
6	ALLIANCE - FAWN	ALL53	MODULAR
7	FREESTYLE - ADOBE	FRS73	MODULAR
8	INTRIGUE - CHARM	ITR17	KINETEX
9	WOODLANDS - DANISH TEAK	009	LVT
10	VEIL - ENVELOP	VLT15	MODULAR

Fiber

ENCORE® SD ULTIMA NYLON
(WITH RECYCLED CONTENT)

Specifically engineered to maximize appearance retention with exceptional color, performance, sustainability and practicality.

Moisture

Are high levels of moisture in your concrete slab causing issues with your project's floor covering? We can help.

- Nexus Modular Carpet with TileTabs - 99% RH
- Cost-efficient
- Long-term performance
- Straightforward, easy-to-understand Lifetime warranty
- Requires no special floor preparation

RH/pH Warranty

Warranty: Installed With TileTabs	Lifetime
Warranty: Installed With Commercialon® Premium Adhesive (non-prorated)	Lifetime
Warranty: Installed With Any Other Adhesive	1 year
Max RH, pH Installed Without Commercialon® Sealer	90% RH, pH 9
Max RH, pH Installed With Commercialon® Premium Sealer	99% RH, pH 11 (TileTabs) — 97% RH, pH 11 (Commercialon)

Backings

NEXUS® MODULAR

Nexus modular products can be installed in a variety of ways and are performance engineered to be visually appealing. In addition, they are designed to accommodate your long-term flooring budget.

- Contains pre-consumer recycled content and contributes to LEED
- Recyclable through EF Contract's R4 Carpet Reclamation Program

Adhesives

COMMERCIALON® PREMIUM MODULAR ADHESIVE
A high-strength acrylic latex-based carpet adhesive specifically formulated for bonding modular PVC-backed carpet to the floor. This premium adhesive is for use with all Nexus Modular Tile products. This adhesive is guaranteed for the life of the installation when used in accordance with the EF Contract Carpet Installation Handbook. Commercialon Premium Modular Adhesive meets the CRI Low-VOC Emission Criteria. Commercialon Premium Modular Adhesive is nontoxic, has ultra-low odor and is antimicrobial in the dry state.

Optional

TILETABS
High Tack Adhesive Tabs (modular only)

Technologies

PROTEX® SOIL RELEASE
ProTex is a proprietary soil release technology that is applied and bonded to the pile fiber to impede soiling and to improve cleanability. It is standard on all EF Contract flooring products.

Optional

PROSEPT® ANTIMICROBIAL
SENTIR® ADVANCED ODOR-BLOCKING TECHNOLOGY



©2022 Engineered Floors LLC - This unique design is protected under the U.S. Copyright Act of 1976. Any unauthorized copying or duplication of this design constitutes copyright infringement in violation of federal law.

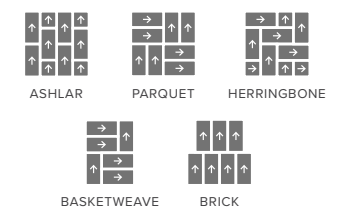
Due to the unique visual characteristics of modular carpets, pattern repeats and pattern run-off seams may appear more noticeable than in broadloom carpets. Such visual characteristics do not constitute a manufacturing defect, and as such, should be considered when selecting modular carpet and its installation. These photographs are representations of the installation for this modular product. Your modular installation may look different than these photos depending upon individual tile placement, lighting and overall space layout, including furnishings. Final tile placement and the resulting visual is thus the customer's, and not EF Contract's, responsibility.

To learn more, visit:

EFCONTRACTFLOORING.COM

STYLE	ALLIANCE TALL
CONSTRUCTION	TEXTURED LOOP PATTERN
FIBER TYPE	100% ENCORE® SD ULTIMA NYLON (WITH RECYCLED CONTENT)
DYE METHOD	SOLUTION DYED
OUNCE WEIGHT	20 OZ / SQUARE YARD
GAUGE	1/10 IN
BACKING	NEXUS® MODULAR
DENSITY	7,579
TOTAL THICKNESS	0.239 INCHES
SIZE	18" X 36"
PATTERN REPEAT	N/A
FINISHED PILE THICKNESS	0.095 INCHES
SPECIAL TECHNOLOGY	PROTEX® SOIL RELEASE
OPTIONAL SPECIAL TECHNOLOGIES	PROSEPT® ANTIMICROBIAL SENTIR® ADVANCED ODOR BLOCKING TREATMENT
PHYSICAL TESTING	FLOORING RADIANT PANEL – (CLASS 1) PILL TEST – (PASSES) SMOKE DENSITY – (LESS THAN 450 FLAMING) STATIC GENERATION – (LESS THAN 3.5 KV)
FIBER WARRANTIES	LIFETIME FIBER PERFORMANCE FOR WEAR LIFETIME FIBER PERFORMANCE FOR STATIC LIFETIME STAIN REMOVAL LIFETIME COLORFASTNESS TO LIGHT AND ATMOSPHERIC CONTAMINANTS
BACKING WARRANTIES	LIFETIME FOR TUFT BIND STRENGTH (EDGE RAVEL, YARN PULLS, ZIPPERING) LIFETIME AGAINST DELAMINATION LIFETIME DIMENSIONAL STABILITY

RECOMMENDED INSTALLATION METHODS





PO Box 2207
Dalton, Georgia 30722
U.S.A.

800.451.1250
efcontractflooring.com
JX6722M06