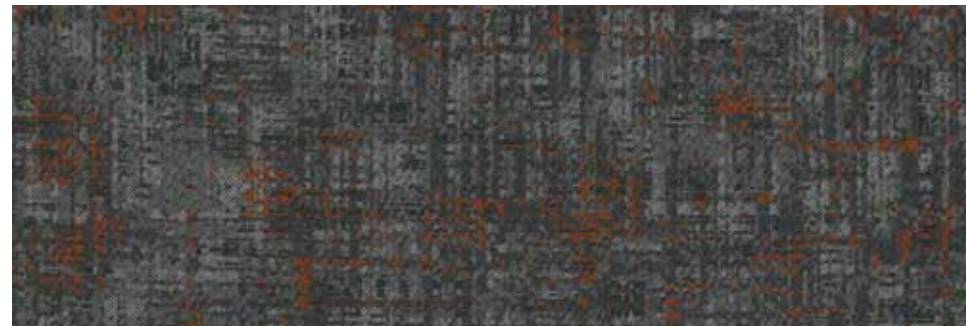
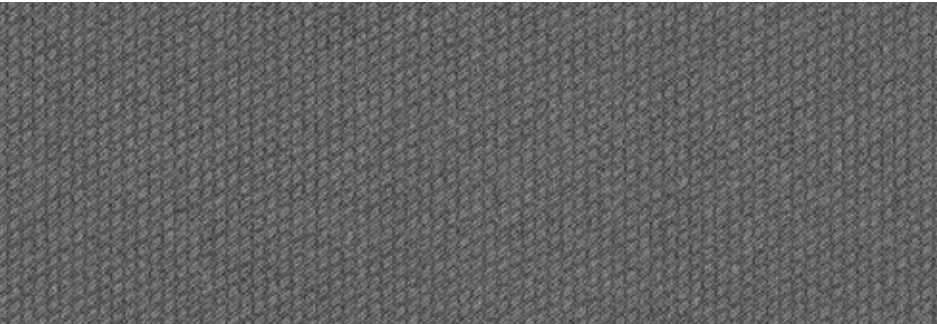




Textile Composite Flooring

kinetex

 **EF Contract**[®]



what is kinetex?

Kinetex® is an advanced textile composite flooring that combines key attributes of soft-surface floor covering with the long-wearing performance characteristics of hard-surface flooring. Created as a unique floor covering alternative to hard-surface products, EF Contract's Kinetex encompasses an unprecedented range of performance attributes for retail, healthcare, education and institutional environments. In addition to its human-centered qualities and highly functional design, Kinetex offers a reduced environmental footprint compared to traditional hard-surface options.

The key to the high-performance attributes of Kinetex lies within its construction.

The key to the high-performance attributes of Kinetex lies within its construction. Each layer, when used together, creates a versatile, lightweight, soft-surface flooring designed with qualities parallel to that of hard-surface.

WEAR LAYER/FACE FIBER
Abrasion and Ravel
Resistant Knitted Fabric



Thermally Fused

CUSHIONED BACKING
Polyester Felt



kinetex overview

A growing body of research correlates certain aspects of the built environment, such as acoustics, indoor air quality, glare and ergonomics, with measurable outcomes related to productivity, health, safety, and effectiveness. Flooring can play a pivotal role in achieving positive outcomes when positioning these factors in many institutional environments. Combined with the practiced approach of evidence-based design, Kinetex provides a solid foundation for performance driven settings.

Combined with the practiced approach of evidence-based design, Kinetex provides a solid foundation for performance driven settings.

1 | durability

With outstanding dimensional stability and crush resistance, Kinetex has withstood over 5 million foot traffic events with minimal wear at a popular Florida-based entertainment venue. That equates to 47 years in a typical size school classroom in the U.S. and 45-50 years in a typical office.

x5 million
FOOT TRAFFIC EVENTS





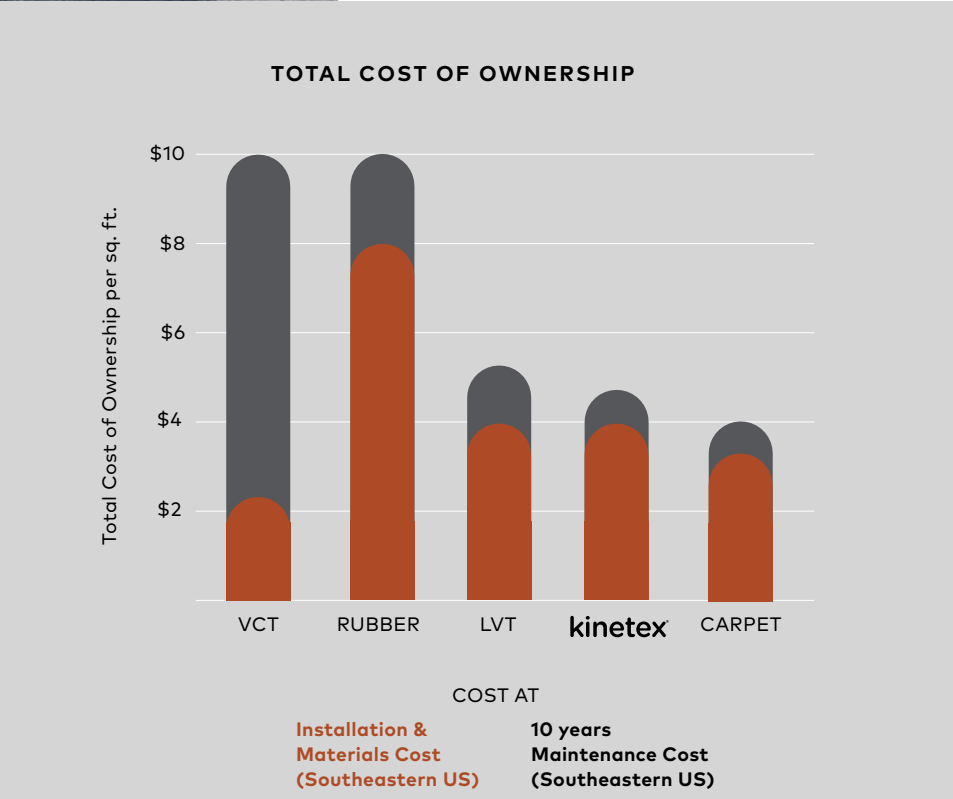
2 | maintenance

Kinetex is tough to wear out but easily cleaned. Regular vacuuming combined with interim low moisture encapsulation cleaning and hot water extraction in areas prone to heavy soiling is all that's needed to keep Kinetex looking new. Because its lightweight face construction retains less water, Kinetex dries 75 percent faster than carpet, rendering it suitable for cleaning while occupied. While wet, it has a highly reduced slip-coefficient when compared to a wet hard surface — which offers a much safer area for walking and standing.

The maintenance of Kinetex is simple and more cost efficient compared to that of hard-surface flooring.

Kinetex resists the most challenging staining agents, such as blood, urine, Betadine, and hand sanitizers. Kinetex products feature a wear layer which is bleach resistant, allowing sanitizing and spot cleaning to be easily performed without affecting color. Kinetex can be cleaned using a hydrogen peroxide-based cleaning solution or a cleaning solution such as Vital Oxide®. Hydrogen peroxide and Vital Oxide are on the Environmental Protection Agency's list of disinfectants that meet its criteria for use against SARS-CoV-2, the cause of Covid-19.

The maintenance of Kinetex is simple and more cost efficient compared to that of hard-surface flooring. There is no need for stripping, wear layer application or buffing — saving time and materials.



¹ All Kinetex styles can be cleaned with a hydrogen peroxide-based cleaning solution or a cleaning solution such as Vital Oxide®. Bleach solutions may be used on certain Kinetex styles when using the recommended bleach/water solution in accordance with the EF Contract maintenance guidelines. Please see the Kinetex maintenance instructions for full recommendations concerning schedules and cleaning supplies for preventative, daily and interim maintenance. Maintenance instructions can be found at efcontract.com.

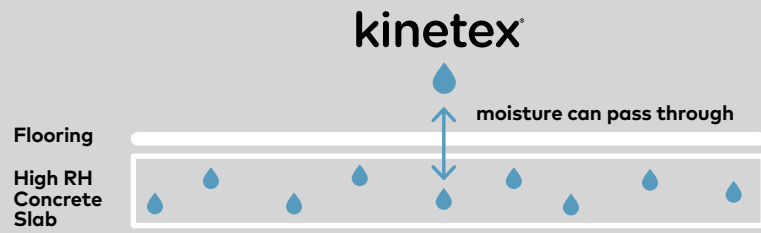


3 | moisture tolerance

The most common subfloor, concrete, can release excessive moisture and destroy floor covering systems — unless costly precautions are taken before installation. But moisture mitigation isn't necessary with Kinetex: its breathable nature allows moisture to pass through its backing, instead of trapping it underneath. Kinetex textile composite flooring will perform in elevated slabs up to 100% RH.*

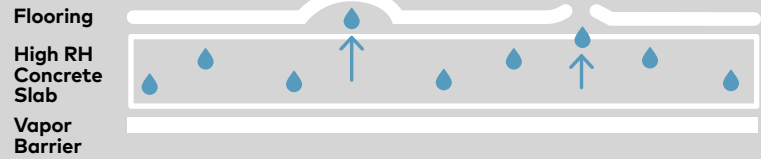
Kinetex textile composite flooring will perform in elevated RH slabs up to 100%.

breathability: WHY KINETEX WORKS IN HIGH RH ENVIRONMENTS



TYPICAL NONBREATHABLE FLOORING

Moisture is trapped, causing blistering, buckling, adhesive degradation, and floor failure.



Barriers can help eliminate moisture from the ground, but have no effect on moisture within concrete which can still damage flooring.



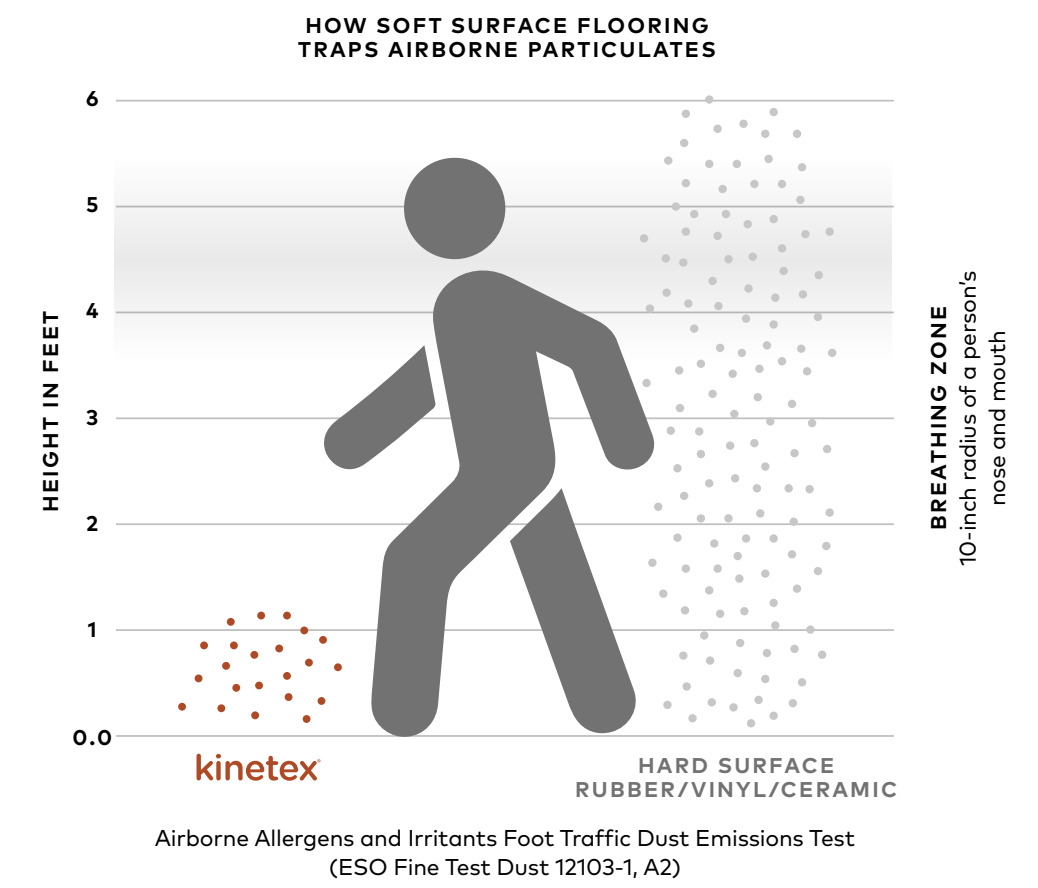
* Product must be installed per manufacturer-approved instructions.



4 | health

How do contaminants enter buildings? They are tracked in on footwear. Textiles, such as Kinetex hold particles in place, sequestering them until they can be removed by cleaning. Once on the floor, contaminants can be redistributed into the breathing zone by foot traffic on hard surface flooring. Soft surface flooring in general prevents redistribution and have proven to inhibit redistribution.

Kinetex easily surpasses California's 01350 requirements for low-VOC emissions and substantially minimizes airborne particles by sequestering common allergens, irritants, and contaminants.



4 | health

It takes a long time for disinfectants to kill a virus like influenza and Covid 19. Contaminants have shown to live many hours longer on hard surfaces than they do on textiles. That's why it's important to use flooring that stays damp longer.



Typical cleaning methods for soft surfaces, like vacuuming and hot water extraction have been proven to significantly remove contaminants. Soft surfaces have the added advantage of remaining damp far more than enough time for disinfectants to kill contaminants, where as a hard surface dries quickly.

10
MINUTES

6
HOURS

16
HOURS

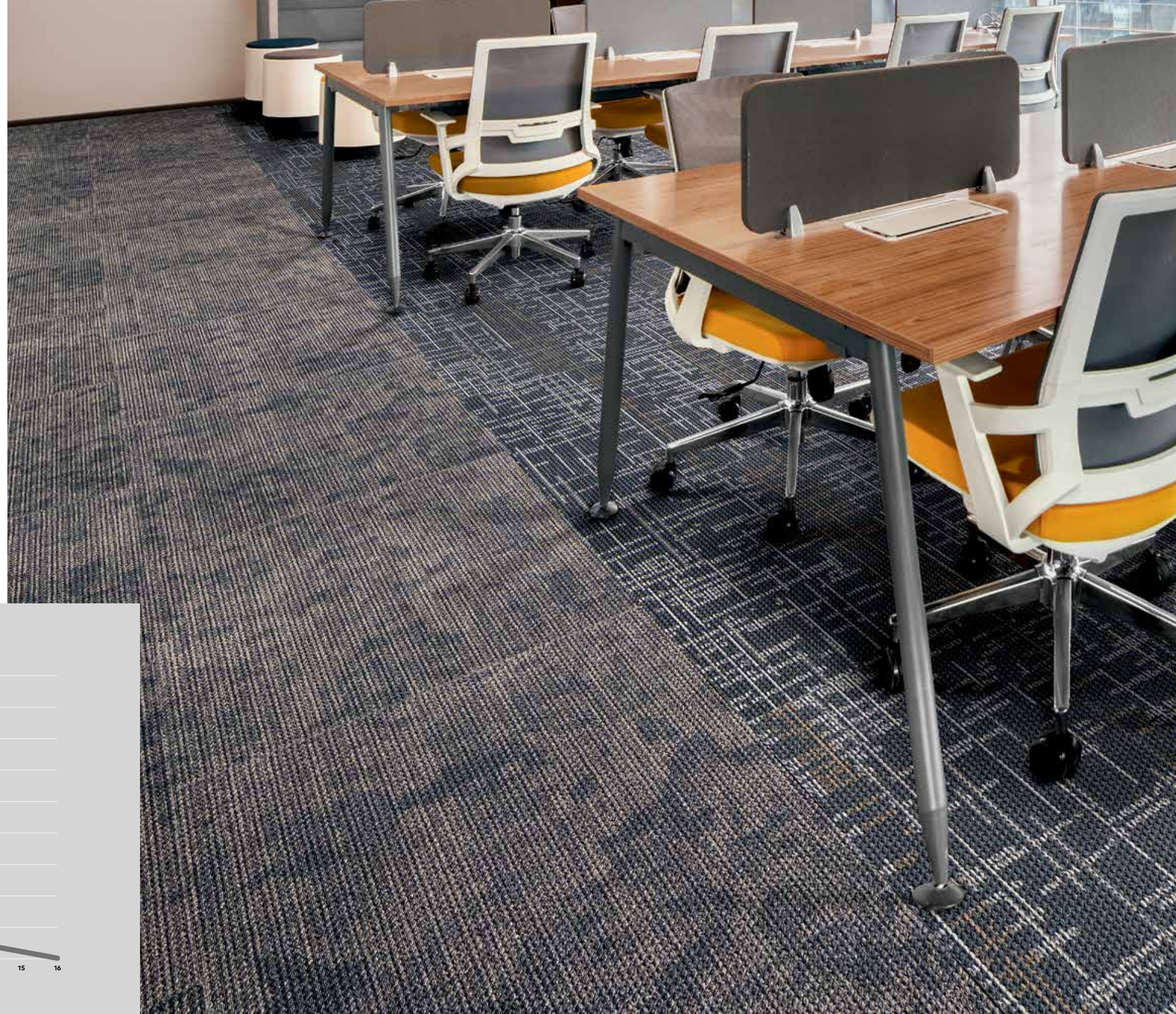
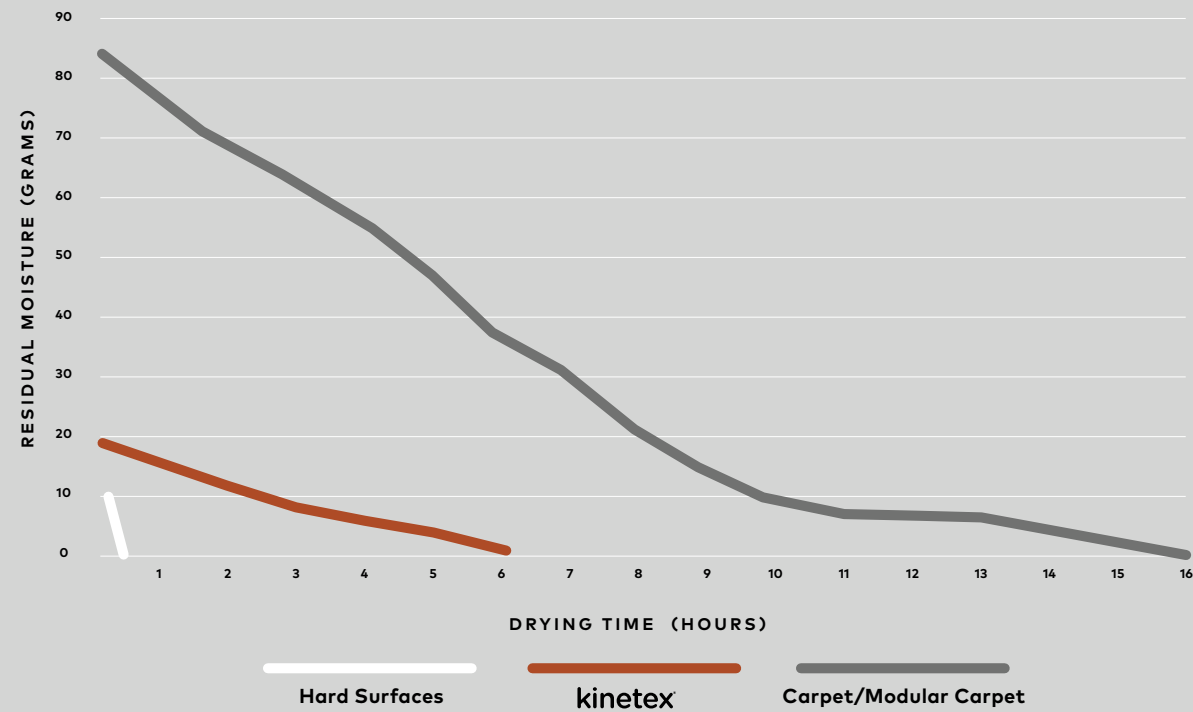
HARD SURFACES

vs

kinetex

vs

CARPET/MODULAR CARPET





High-Def Color Technology™

EF Contract achieves next-generation innovation with the development of High-Def Color Technology. This latest engineering capability provides Kinetex products with crisp color, vibrant patterns, and dimensional design that rivals that of soft surface flooring.

5 | safety

Kinetex's unique construction creates one of the most slip resistant flooring surfaces ever tested, wet or dry — reducing the potential for slip and fall injuries. It has been certified by the National Floor Safety Institute (NFSI) as a high traction surface. Its unique low profile also has minimal rolling resistance, potentially reducing injuries from pushing and pulling.

High Traction Surface Certification

Risks of slips, trips, and falls can pose an immediate threat to people of all ages, and most are avoidable with consideration to flooring selection based on the specific needs and requirements of the building. The National Floor Safety Institute notes that 55 percent of all

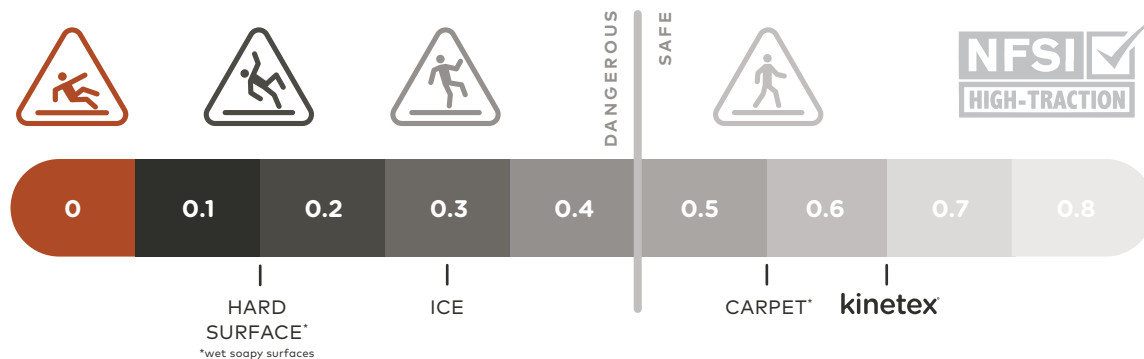
slips, trips and falls are due to problems with the floor covering's surface, and that flooring materials contribute directly to more than 2 million fall injuries per year.

Kinetex is the first wall-to-wall interior floor covering to be certified as a High Traction surface by the National Floor Safety Institute (NFSI.)

With a strong portfolio of performance attributes – including slip resistance - Kinetex is the first wall-to-wall interior floor covering to be certified as a High Traction surface by the National Floor Safety Institute (NFSI.) As a credible third-party certifier, NFSI's commitment to education, research and the development of standards reinforces EF Contract's commitment to safety.

In order to receive NFSI Certification, Kinetex underwent a comprehensive series of tests involving two phases. Each phase measures both static and dynamic coefficients of friction, under both dry and wet conditions. The first phase of testing is conducted on new flooring in a laboratory. Phase two testing is conducted immediately after an actual customer installation and again after 30 days, post-installation, to see if traffic and maintenance change the slip resistance. Kinetex easily surpassed both tests, making it an ideal option to reduce the risks and liabilities of flooring-associated injuries.

COEFFICIENT OF FRICTION



Rollability

Kinetex's unique low profile provides rolling resistance equal to that of hard surface while offering exceptionally high traction. Kinetex is the first and only wall-to-wall interior floor covering to be certified as a high traction surface by the National Floor Safety Institute.

PUSHING AND PULLING ON KINETEX AND HARD SURFACE

PUSH



PULLING



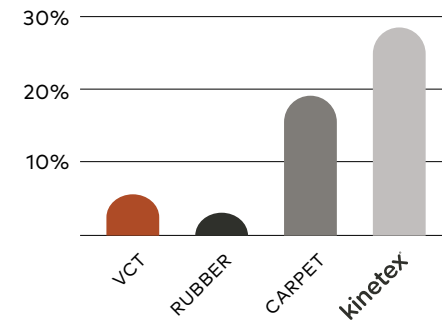


6 | acoustics

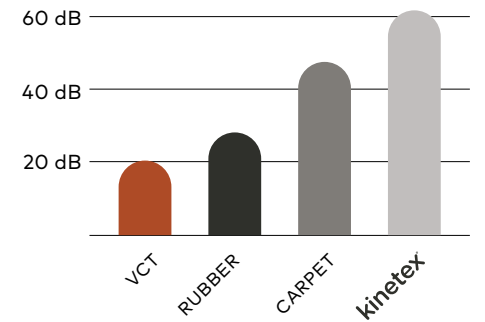
Hard surface flooring absorbs little or no sound and has greater potential to transmit sound, contributing to a noisier environment. In contrast, soft surface flooring absorbs significantly more sound and transmits less sound, contributing to a quieter environment. Kinetex offers one of the highest Noise Reduction Coefficients and Impact Insulation Classifications of any commercial flooring product. This unparalleled acoustic performance results in dramatic reductions in both airborne and structure borne noise. Its excellent Impact Insulation Classification effectively promotes greater voice recognition, fewer mistakes, less vocal strain, enhanced learning and improved occupant perception.

Kinetex offers one of the highest Noise Reduction Coefficients and Impact Insulation Classifications of any commercial flooring product.

AIRBORNE NOISE REDUCTION
Percentage of Sound Absorbed

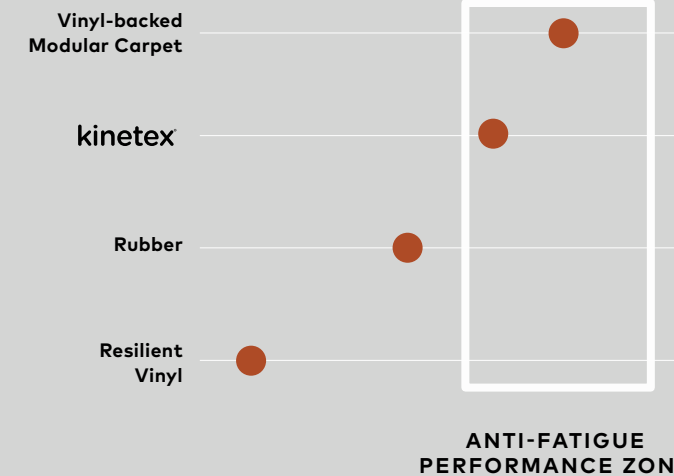


STRUCTURE-BORNE NOISE REDUCTION
Amount of Sound Absorbed



7 | comfort

ANTI-FATIGUE PROPERTIES OF FLOORING



Kinetex's high-density backing and soft textile surface provides exceptional anti-fatigue properties along with minimal rolling resistance. It embodies the potential to absorb energy and reduce both repetitive foot stress injuries and injuries related to walking and moving frequently from place to place. With its thermal insulation properties, Kinetex also provides a warmer indoor environment.



8 | sustainability

Kinetex has a 50% lower environmental impact compared to other commercial floorings and is easily recycled. Made with 45% post-consumer recycled content, each Kinetex tile contains the equivalent of 27 used water bottles. One box of Kinetex contains the equivalent of 492 plastic water bottles.

Its smaller mass means it has a 50% lower environmental impact compared to other commercial floorings.

This PVC-free dematerialized flooring product and its longer life mean that Kinetex has a lower carbon footprint than other commercial flooring options and purchasing carbon offsets allows us to bridge the gap and verify Kinetex as a carbon neutral product. For transparency, our offset purchases were calculated based on 100% of the A1-A3 GWP values reported publicly in our 3rd party verified Environmental Production Declarations (EPD) for all annual Kinetex production. Kinetex is NSF/ANSI-140 Platinum certified (the industry-leading standard for sustainability) and has a Red List Free DECLARE label.

easy installation

While Kinetex installs in a manner similar to LVT or carpet tile, the unique nature of Kinetex and its adhesive technologies requires strict adherence to the installation instructions for preparation and open time/working time. Following EF Contract's published Kinetex installation instructions, the space and Kinetex require acclimation prior to installation. Kinetex Adhesive, which is covered with our exclusive Lifetime Warranty, is required for installation. No RH testing of the subfloors is required because Kinetex Adhesive is warranted over floors with up to 100% RH.

Visit efcontract.com for Kinetex installation instructions.



Kinetex Adhesive

Kinetex Adhesive is formulated for Kinetex textile composite flooring products and is built to bond the textile composite to the properly prepared substrates for the life of the installation. Products with Kinetex Adhesive will perform in elevated RH slabs up to 100%.



where to use kinetex

Healthcare

Acute care hospitals, medical office buildings, urgent care clinics, outpatient surgery centers, outpatient physical therapy/rehab centers, outpatient imaging centers, etc.

- Cafeteria, dining areas
- Chapel
- Computer room
- Corridors
- Diagnostic imaging suites
- Dry physical therapy
- Elevators
- Exam/procedure rooms
- Gift shops
- Hyperbaric treatment rooms
- Lobbies
- Nursing stations
- Offices /administration / conference rooms
- Patient rooms (family areas)
- Pharmacy
- Ramps /ramped corridors
- Staff lounge
- Waiting rooms

Fitness Centers

Health Clubs/Gyms

- Cardio Centers
- Stationary Weight Centers
- Dry Locker Room Areas
- Snack Bars
- Offices

Retail / Mercantile

Wholesale /Retail merchants

- Checkout / cash wrap
- Dressing rooms
- Sales floor
- Offices
- Employee break areas

Hospitality

Hotels

- Corridors
- Conference rooms
- Guest rooms
- Dining rooms
- Business centers
- Activity rooms
- Common areas
- Computer rooms

Education

Early childhood development centers, preschool, k-12, higher education

- Auditoriums
- Classrooms / lecture halls
- Computer classrooms
- Dormitory rooms
- Food service areas
- Multipurpose rooms / cafeteria
- Ramps /ramped corridors
- Faculty /administrative offices
- Faculty lounge
- Libraries

Transportation / Public Venues

Airports, bus/train stations, performing arts centers, athletic arenas

- Ticketing / baggage claim
- Concourses
- Jetways
- Conference rooms
- Waiting areas
- Administrative offices / ATC
- Airline clubs / USO
- Chapel
- Large public spaces
- Theaters

Commercial Offices

Offices, call centers

- Offices
- Waiting areas
- Corridors
- Conference rooms
- Copy /mail rooms
- Break rooms
- Computer rooms

kinetex

 **EF Contract**[®]

P.O. Box 2207

Dalton, GA 30722

p 800 241 4586

f 706 275 4433

EFCONTRACT.COM