



**Installation Methods:** Parquet, Herringbone, Basketweave, Brick, Ashlar

Product Specifications

Construction	Patterned Scroll
Backing	Nexus® Modular
Dye Method	Solution Dyed
Fiber Type	Encore® SD Ultima® (with recycled content)
Face Weight	18 oz./sy (610 grams/m2)
Pile Density	6894 oz./y3 (255.63 kg/m3)
Pattern Repeat	N/A
Gauge	1/12 (4.72 rows/cm)
Stitches Per Inch	10.33 stitches/in (4.07 stitches/cm)
Standard Size	18" x 36" approx. (45.72cm x 91.44cm)
Standard Adhesive	Commercialon Premium Modular and LVT Adhesive
Optional Adhesive	TileTabs
Standard Warranties	Nexus Modular Commercialon Adhesive for Modular Carpet & LVT Nexus FC Cushion Encore SD Ultima Fiber
Optional Warranties	Advance Modular Backing Nexus Cushion Modular Adhesive Advance Modular Adhesive Tile Tabs Encore® 100 Fiber

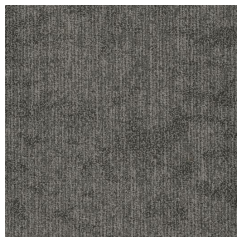
Special Technologies

ProSept® Antimicrobial	Optional
ProTex® Soil Release	Standard
Sentir® Odor-Blocker	Optional

Environmental Specifications & Tests

NSF 140:	Gold Certified
Total Recycled Content	45.8%
Radiant Panel	Class 1
Smoke Density	Less then 450 flaming (ASTM E 662)
Static Test	Less then 3 kv (AATCC-134)
ADA Compliance	Compliant For Accessible Routes
Pill Test	Yes
Lightfastness	Yes

Colorways



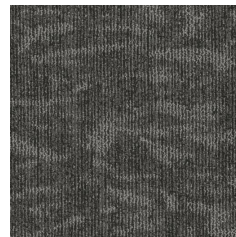
SDF20 Ash



SDF25 Amber



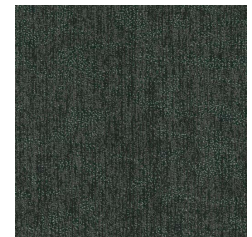
SDF27 Sienna



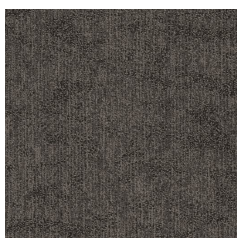
SDF30 Dolomite



SDF36 Patina



SDF38 Viridian



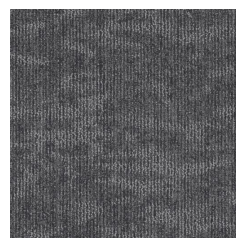
SDF40 Smoke



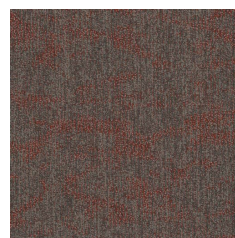
SDF45 Azure



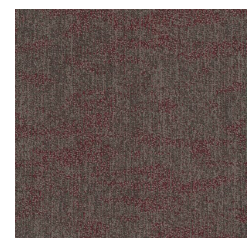
SDF48 Indigo



SDF80 Ebony



SDF86 Flame



SDF88 Crimson