



Installation Methods: Brick, Ashlar, Quarter Turn, Stair Step

Product Specifications

Construction	Patterned Loop
Backing	Nexus® Modular
Dye Method	Solution Dyed
Fiber Type	Encore® SD Ultima® (with recycled content)
Face Weight	27 oz./sy (915 grams/m2)
Pile Density	9624 oz./y3 (356.86 kg/m3)
Pattern Repeat	N/A
Gauge	1/12 (4.72 rows/cm)
Standard Size	24" x 24" approx. (60.96cm x 60.96cm)
Standard Adhesive	Commercialon Premium Modular and LVT Adhesive
Optional Adhesive	TileTabs
Standard Warranties	Nexus Modular Commercial Adhesive for Modular Carpet & LVT Encore SD Ultima Fiber
Optional Warranties	Advance Modular Backing Nexus Cushion Modular Adhesive Advance Modular Adhesive Tile Tabs Nexus FC Cushion Encore® 100 Fiber

Special Technologies

ProSept® Antimicrobial	Optional
ProTex® Soil Release	Standard
Sentir® Odor-Blocker	Optional

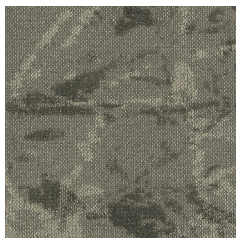
Environmental Specifications & Tests

NSF 140:	Gold Certified
Total Recycled Content	43.8%
Radiant Panel	Class 1
Smoke Density	Less than 450 flaming (ASTM E 662)
Static Test	Less than 3 kv (AATCC-134)
ADA Compliance	Compliant For Accessible Routes
Pill Test	Yes
Lightfastness	Yes

Colorways



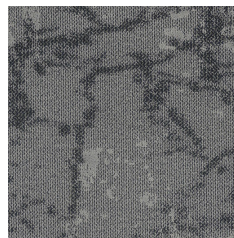
SOC15 Kelly



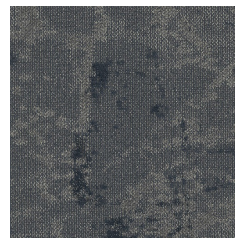
SOC24 Porter



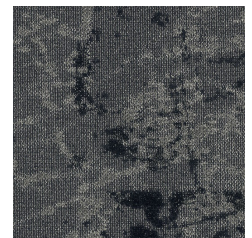
SOC28 Newport



SOC40 Armstrong



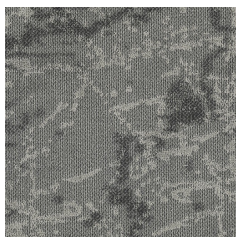
SOC45 Gilded



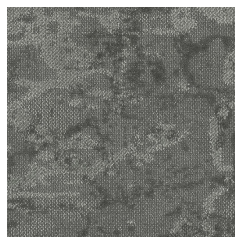
SOC47 Engagement



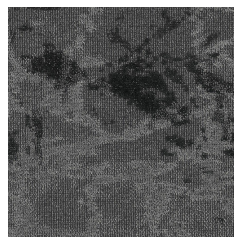
SOC48 Love



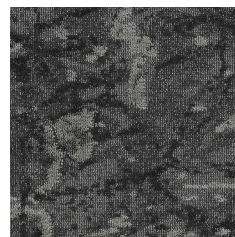
SOC50 Sense



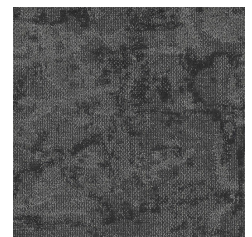
SOC53 Grace



SOC56 Play



SOC59 Film



SOC77 Open