



Installation Methods: Brick, Ashlar, Quarter Turn, Stair Step

Product Specifications

Construction	Patterned Loop
Backing	Nexus® Modular
Dye Method	Solution Dyed
Fiber Type	Encore® SD Ultima® (with recycled content)
Face Weight	27 oz./sy (915 grams/m2)
Pile Density	10125 oz./y3 (375.44 kg/m3)
Pattern Repeat	N/A
Gauge	1/12 (4.72 rows/cm)
Standard Size	24" x 24" approx. (60.96cm x 60.96cm)
Standard Adhesive	Commercialon Premium Modular and LVT Adhesive
Optional Adhesive	TileTabs
Standard Warranties	Nexus Modular Commercialon Adhesive for Modular Carpet & LVT Encore SD Ultima Fiber
Optional Warranties	Advance Modular Backing Nexus Cushion Modular Adhesive Advance Modular Adhesive Tile Tabs Nexus FC Cushion Encore® 100 Fiber

Special Technologies

ProSept® Antimicrobial	Optional
ProTex® Soil Release	Standard
Sentir® Odor-Blocker	Optional

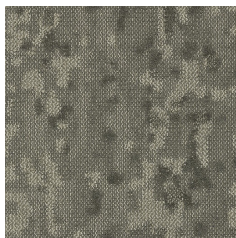
Environmental Specifications & Tests

NSF 140:	Gold Certified
Total Recycled Content	43.8%
Radiant Panel	Class 1
Smoke Density	Less than 450 flaming (ASTM E 662)
Static Test	Less than 3 kv (AATCC-134)
ADA Compliance	Compliant For Accessible Routes
Pill Test	Yes
Lightfastness	Yes

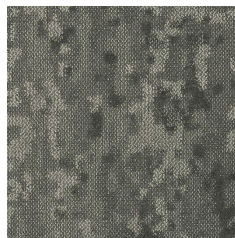
Colorways



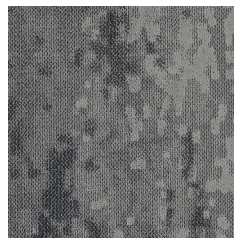
ROM15 Kelly



ROM24 Porter



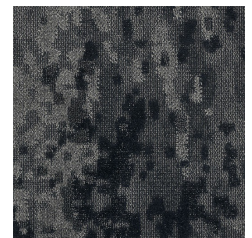
ROM28 Newport



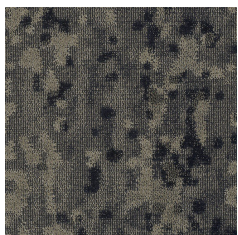
ROM40 Armstrong



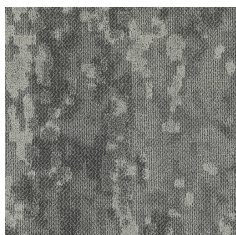
ROM45 Gilded



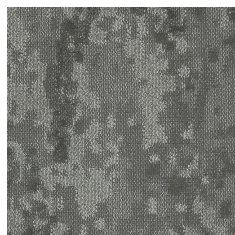
ROM47 Engagemen...



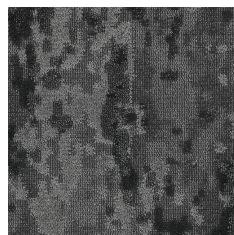
ROM48 Love



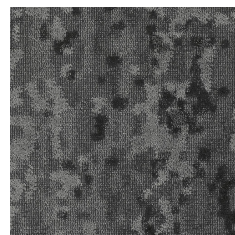
ROM50 Sense



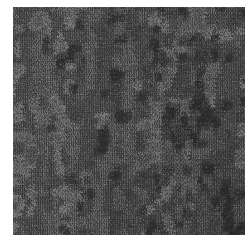
ROM53 Grace



ROM56 Play



ROM59 Film



ROM77 Open