



Product Specifications

| | |
|---------------------|---|
| Construction | Cut and Loop |
| Backing | Standard Back |
| Dye Method | Solution Dyed |
| Fiber Type | EF Contract SD Nylon |
| Face Weight | 32 oz./sy (1085 grams/m2) |
| Pile Density | 4683 oz./y3 (173.65 kg/m3) |
| Pattern Repeat | 12.00" (w) x 18.70" (l) approx. (30.48cm x 47.50cm) |
| Gauge | 1/8 (3.15 rows/cm) |
| Stitches Per Inch | 12.8 stitches/in (5.04 stitches/cm) |
| Standard Width | 12 ft 3.66 m |
| Standard Adhesive | Commercialon Premium Carpet Adhesive |
| Standard Warranties | Standard Back |

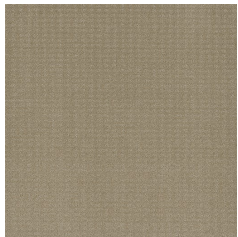
Special Technologies

| | |
|------------------------|----------|
| ProSept® Antimicrobial | Optional |
| ProTex® Soil Release | Standard |
| Sentir® Odor-Blocker | Optional |

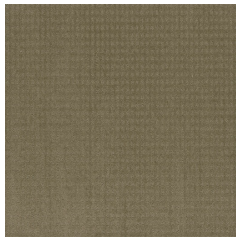
Environmental Specifications & Tests

| | |
|------------------------|------------------------------------|
| NSF 140: | N/A Certified |
| Total Recycled Content | 0% |
| Radiant Panel | Class 1 |
| Smoke Density | Less than 450 flaming (ASTM E 662) |
| Static Test | Less than 3 kv (AATCC-134) |
| ADA Compliance | Compliant For Accessible Routes |
| Pill Test | Yes |
| Lightfastness | Yes |

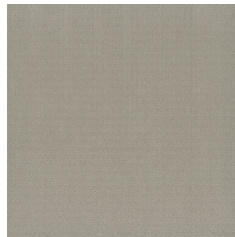
Colorways



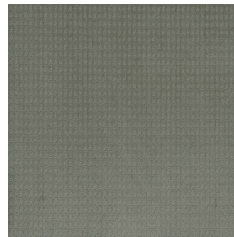
LEX24 Sand



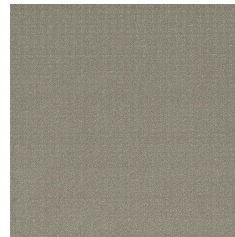
LEX25 Hazel



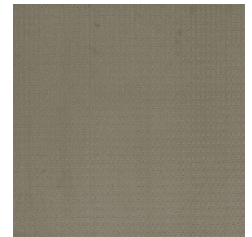
LEX51 Dove



LEX55 Ash



LEX74 Pearl Grey



LEX75 Taupe