



Installation Methods: Brick, Monolithic, Ashlar, Quarter Turn

Product Specifications

Construction	Tip Sheared Loop Pattern
Backing	Nexus® Modular
Dye Method	Solution Dyed
Fiber Type	Encore® SD Ultima® (with recycled content)
Face Weight	24 oz./sy (814 grams/m ²)
Pile Density	5838 oz./y ³ (216.48 kg/m ³)
Pattern Repeat	N/A
Gauge	1/10 (3.94 rows/cm)
Standard Size	24"x24" approx. (60.96cm x 60.96cm)
Standard Adhesive	Commercialon Premium Modular and LVT Adhesive
Optional Adhesive	TileTabs
Standard Warranties	Nexus Modular Commercial Adhesive for Modular Carpet & LVT Encore SD Ultima Fiber
Optional Warranties	Advance Modular Backing Nexus Cushion Modular Adhesive Advance Modular Adhesive Tile Tabs Nexus FC Cushion Encore® 100 Fiber

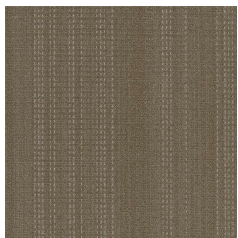
Special Technologies

ProSept® Antimicrobial	Optional
ProTex® Soil Release	Standard
Sentir® Odor-Blocker	Optional

Environmental Specifications & Tests

NSF 140:	Gold Certified
Total Recycled Content	44.4%
Radiant Panel	Class 1
Smoke Density	Less than 450 flaming (ASTM E 662)
Static Test	Less than 3 kv (AATCC-134)
ADA Compliance	Compliant For Accessible Routes
Pill Test	Yes
Lightfastness	Yes

Colorways



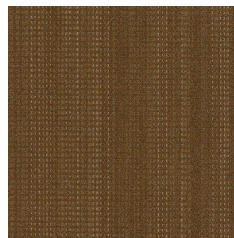
IMM13 Driftwood



IMM23 Ochre



IMM24 Canary



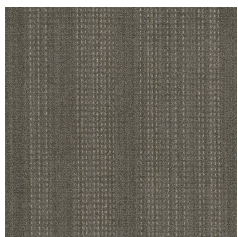
IMM26 Sepia



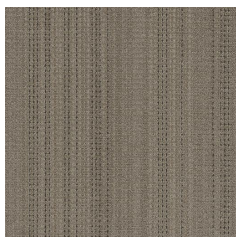
IMM44 Luminol



IMM45 Squid



IMM53 Quarry



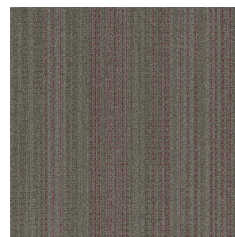
IMM54 Charred



IMM77 Rooted



IMM84 Matador



IMM94 Concord