



Product Specifications

Construction	Textile Composite
Backing	Kinetex Felt Cushion
Dye Method	Solution Dyed
Wear Layer	100% Solution Dyed Polyester
Pattern Repeat	N/A
Total Weight	4.5 oz - 5.2 oz/ square foot
Total Thickness	.205 inches
Dimensions:	24" x 24" modules
Standard Adhesive	Kinetex Adhesive
Packaging	18 modules per box (72 sq.ft)
Standard Warranties	Kinetex Adhesive

Special Technologies

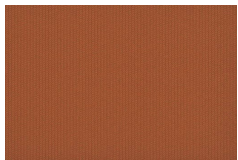
Kinetex ProTex®	Standard
------------------------	----------

Environmental Specifications & Tests

Carbon Footprint:	Carbon Neutral
Recyclability:	100% Closed-loop Recyclable
NSF 140:	Platinum Certified
Indoor Air Quality	GLP2690
Total Recycled Content:	47%
Radiant Panel	Class 1
Smoke Density	Less then 450 flaming (ASTM E 662)
Static Test	Less then 3 kv (AATCC-134)
ADA Compliance	Compliant For Accessible Routes
Pill Test	Yes
Lightfastness	Yes

Installation Methods: Quarter Turn, Stair Step

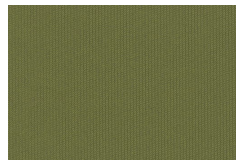
Colorways



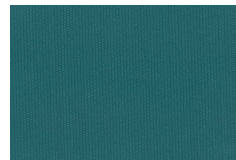
DAR24 Surge



DAR25 Dash



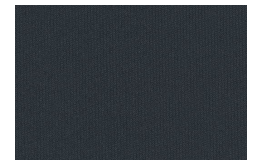
DAR34 Flash



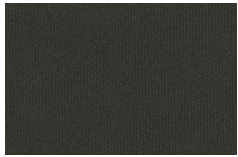
DAR44 Whiz



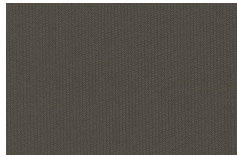
DAR45 Sprint



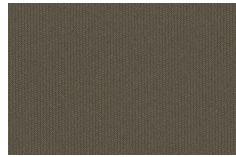
DAR49 Hurry



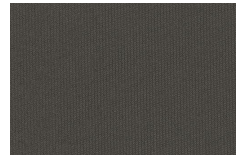
DAR59 Zoom



DAR74 Bolt



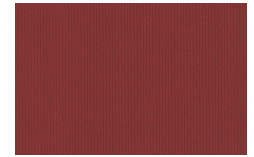
DAR76 Gallop



DAR77 Fly



DAR79 Zip



DAR87 Spring



DAR99 Streak