



Textures

LVT

Natural Stone
Stained Concrete
Scratched Concrete
Mineral

 EF Contract™



We're EF Contract.

Part of the fastest-growing, most progressive family of flooring companies, we stand for confidence in quality, relentless service and doing right by all.

Our products are inspired by you: offering the carpet and hard-surface flooring that you want and need, that you've been seeking but unable to find, until now.

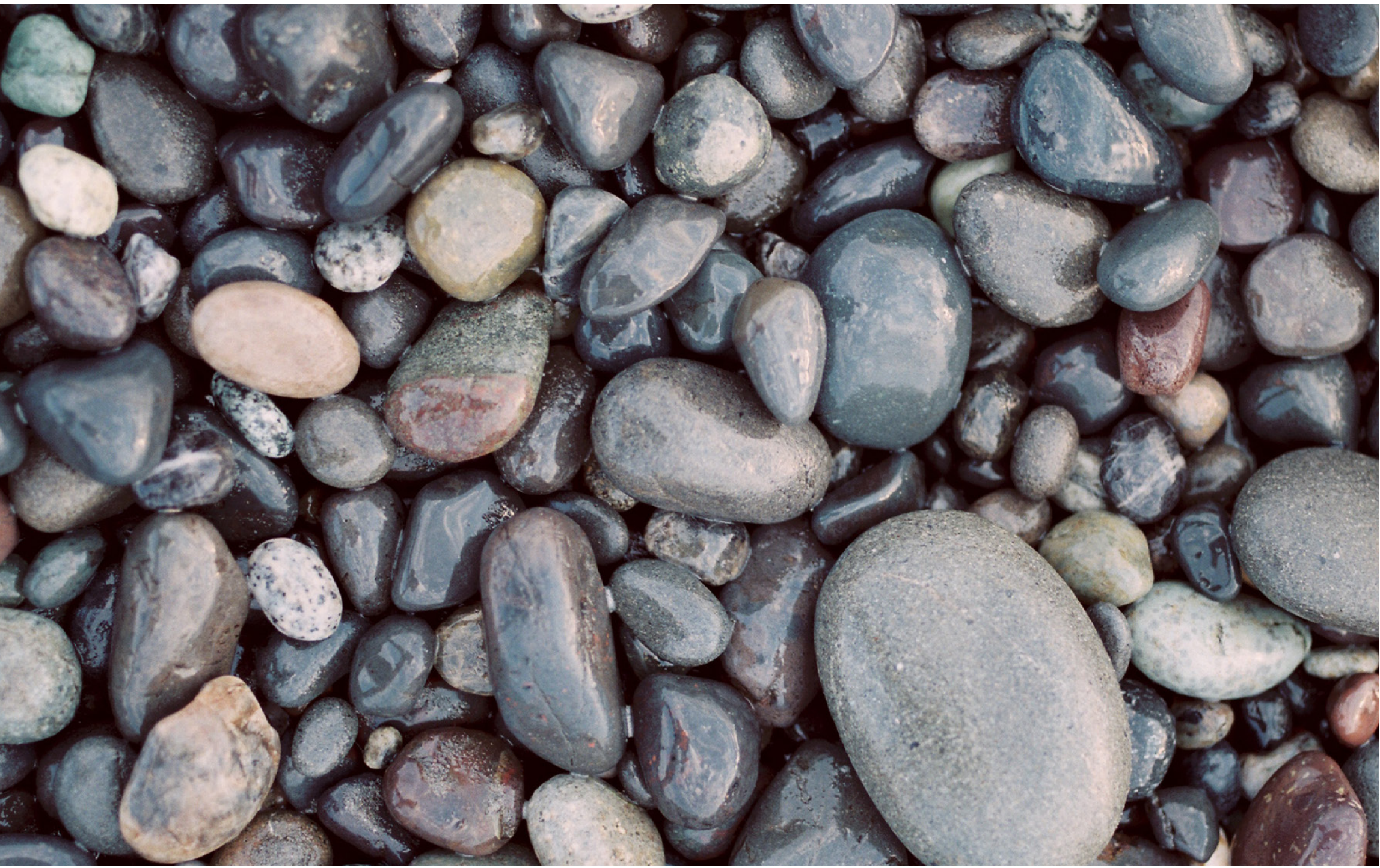
Every collection, pattern and colorway are created with best in class performance and in pursuit of design that is simply beautiful.

LVT has transformed hard surface vinyl flooring in the past decade, due to its easy installation and incredible durability. At EF Contract, we build on these performance characteristics with simple, sophisticated beauty—bringing together natural looks with technology-driven quality to create flooring that will last for years in your education, retail, healthcare, hospitality and even corporate installations.

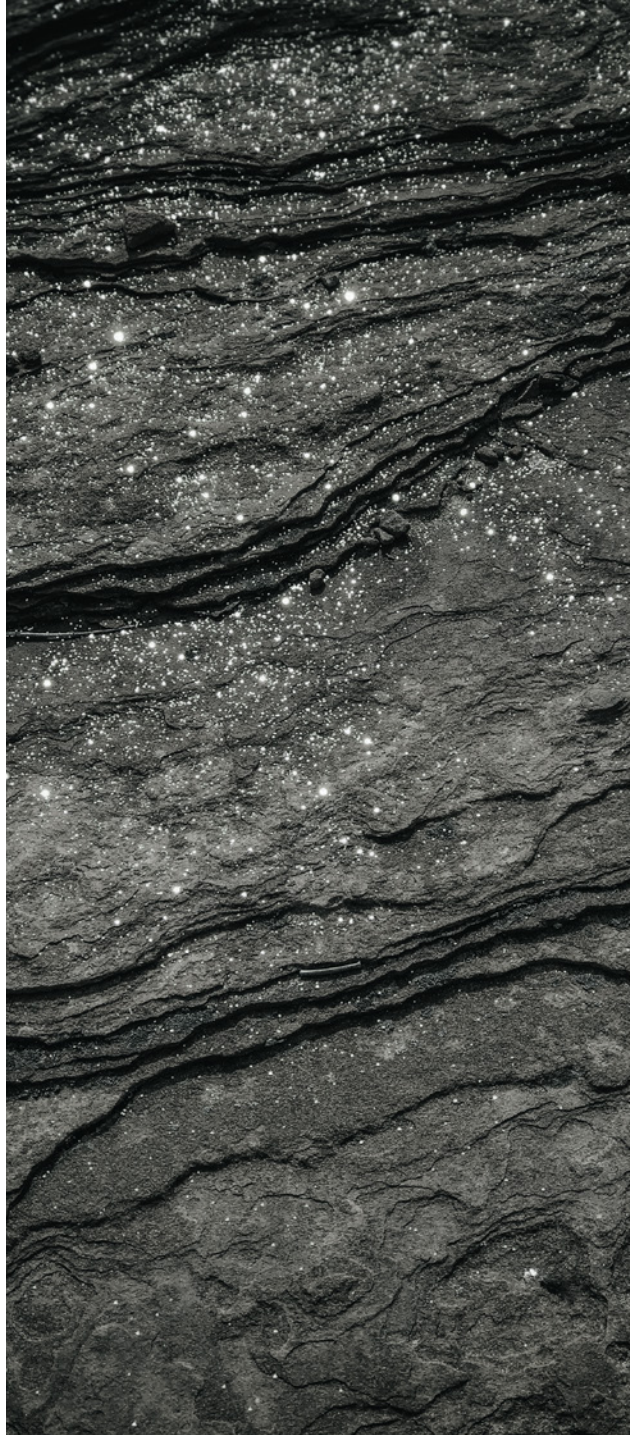


Textures

Our LVT brings the simplicity and sophistication of concrete and natural stone floors to commercial spaces. Concrete, stone and mineral patterns were developed to highlight each space and ensure perfect coordination during design and installation.



STAINED CONCRETE - WHITEWASH / SCRATCHED CONCRETE - GRAY / NATURAL STONE - COOL STONE / SCRATCHED CONCRETE - CHARCOAL





STAINED CONCRETE - DARK ASH





TEXTURES

NATURAL STONE

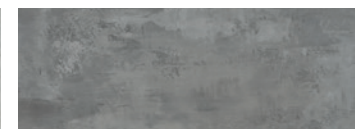


NATURAL STONE | BLVTS 001
COOL STONE

STAINED CONCRETE



STAINED CONCRETE | EFCSC 001
WHITEWASH



STAINED CONCRETE | EFCSC 002
LIMESTONE

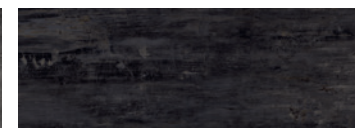


STAINED CONCRETE | EFCSC 003
DARK ASH

SCRATCHED CONCRETE



SCRATCHED CONCRETE | BLVSC 002
GREY

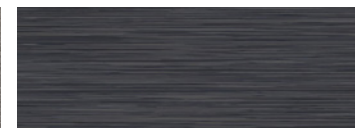


SCRATCHED CONCRETE | BLVSC 001
CHARCOAL

MINERAL



MINERAL | BLVEL 002
URBAN GREY



MINERAL | BLVEL 003
URBAN CHARCOAL

PRODUCT DETAILS

STYLE	NATURAL STONE BLVTS	SCRATCHED CONCRETE BLVSC	STAINED CONCRETE EFCSC	MINERAL BLVEL
THICKNESS	2.5MM	2.5MM	2.5MM	2.5MM
WEAR LAYER	20MIL	22MIL	20MIL	22MIL
GLASS FIBER	NO	NO	NO	NO
FINISH / COATING	ENHANCED UV URETHANE	ENHANCED UV URETHANE	ENHANCED UV URETHANE WITH CERAMIC	ENHANCED UV URETHANE
NOMINAL DIMENSIONS	18.5 X 18.5 IN	24 X 36 IN	18 X 36 IN	18 X 36 IN
PATTERN REPEAT	RANDOM STONE PATTERN	RANDOM STONE PATTERN	RANDOM STONE PATTERN	RANDOM STONE PATTERN
MICRO-BEVELED	NO	NO	NO	NO
CLASS / ASTM F1700	CLASS III PRINTED FILM VINYL PLANK - TYPE B (EMBOSSSED)	CLASS III PRINTED FILM VINYL PLANK - TYPE B (EMBOSSSED)	CLASS III PRINTED FILM VINYL PLANK - TYPE B (EMBOSSSED)	CLASS III PRINTED FILM VINYL PLANK - TYPE B (EMBOSSSED)
BACKING CLASS	COMMERCIAL GRADE	COMMERCIAL GRADE	COMMERCIAL GRADE	COMMERCIAL GRADE
GLOSS LEVEL (IF KNOWN)	MATTE FINISH	MATTE FINISH	MATTE FINISH	MATTE FINISH
TRAFFIC USE	HEAVY COMMERCIAL	HEAVY COMMERCIAL	HEAVY COMMERCIAL	HEAVY COMMERCIAL
ADDED ANTIMICROBIAL	YES	YES	YES	YES
FLOORSCORE CERTIFIED	YES	YES	YES	YES

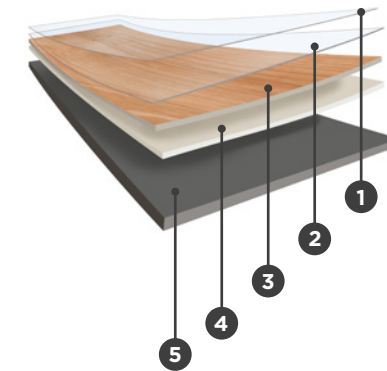
PERFORMANCE		NATURAL STONE TDBL	STAINED CONCRETE TSCH	SCRATCHED CONCRETE TITL	MINERAL TRPS
SIZE AND TOLERANCE	ASTM F2055	PASSES	PASSES	PASSES	PASSES
THICKNESS	ASTM F386	PASSES	PASSES	PASSES	PASSES
SQUARENESS	ASTM F2055	PASSES	PASSES	PASSES	PASSES
RESIDUAL INDENTATION	ASTM F1914	PASSES	PASSES	PASSES	PASSES
FLEXIBILITY	ASTM F137	PASSES	PASSES	PASSES	PASSES
DIMENSIONAL STABILITY	ASTM F2199	PASSES	PASSES	PASSES	PASSES
CHEMICAL RESISTANCE	ASTM F925	PASSES	PASSES	PASSES	PASSES
RESISTANCE TO HEAT	ASTM F1514	PASSES	PASSES	PASSES	PASSES
RESISTANCE TO LIGHT	ASTM F1515	PASSES	PASSES	PASSES	PASSES
CRITICAL RADIANT FLUX	ASTM E648	CLASS 1	CLASS 1	CLASS 1	CLASS 1
OPTICAL SMOKE DENSITY	ASTM E662	PASSES < 450	PASSES < 450	PASSES < 450	PASSES < 450
SLIP RESISTANCE	ASTM C1028	PASSES	PASSES	PASSES	PASSES
STATIC LOAD	ASTM F970	PASSES	PASSES	PASSES	PASSES

TECHNICAL INFORMATION

PRODUCT WARRANTY	10 YR COMMERCIAL WARRANTY / 30 YEAR RESIDENTIAL
REQUIRED ADHESIVE	COMMERCIALON
INSTALLATION METHOD	FULL SPREAD

ENVIRONMENTAL

INDOOR AIR QUALITY	FLOORSCORE® CERTIFIED
LEED V4	CONTRIBUTES TO IAQ: LOW EMITTING MATERIALS
END OF LIFE	100% RECYCLABLE



- 1 Protective UV Cured Urethane
- 2 22mil Wear Layer (Natural Stone and Stained Concrete are 20mil)
- 3 High Definition Print Film
- 4 Impact Resistant Core Layer
- 5 Foundational Base Layer

Sustainably Sound

EF Contract believes true sustainability requires full attention to the potential impacts of every aspect of our business. In accordance with our mission of waste reduction, all EF Contract LVT products are 100% recyclable.



You can rest assured that health is also a top priority and all EF Contract LVT products are FloorScore Certified.

©2018 Engineered Floors LLC - This unique design is protected under the U.S. Copyright Act of 1976. Any unauthorized copying or duplication of this design constitutes copyright infringement in violation of federal law.

These photographs are representations of the installation for this modular product. Your modular installation may look different than these photos depending upon individual tile placement, lighting, and overall space layout, including furnishings. Final tile placement and the resulting visual is thus the customer's, and not EF Contract's responsibility.

To learn more, visit:

EFCONTRACTFLOORING.COM



A DIVISION OF ENGINEERED FLOORS

1502 Coronet Drive
Dalton, Georgia 30720
U.S.A.

800.451.1250
efcontractflooring.com