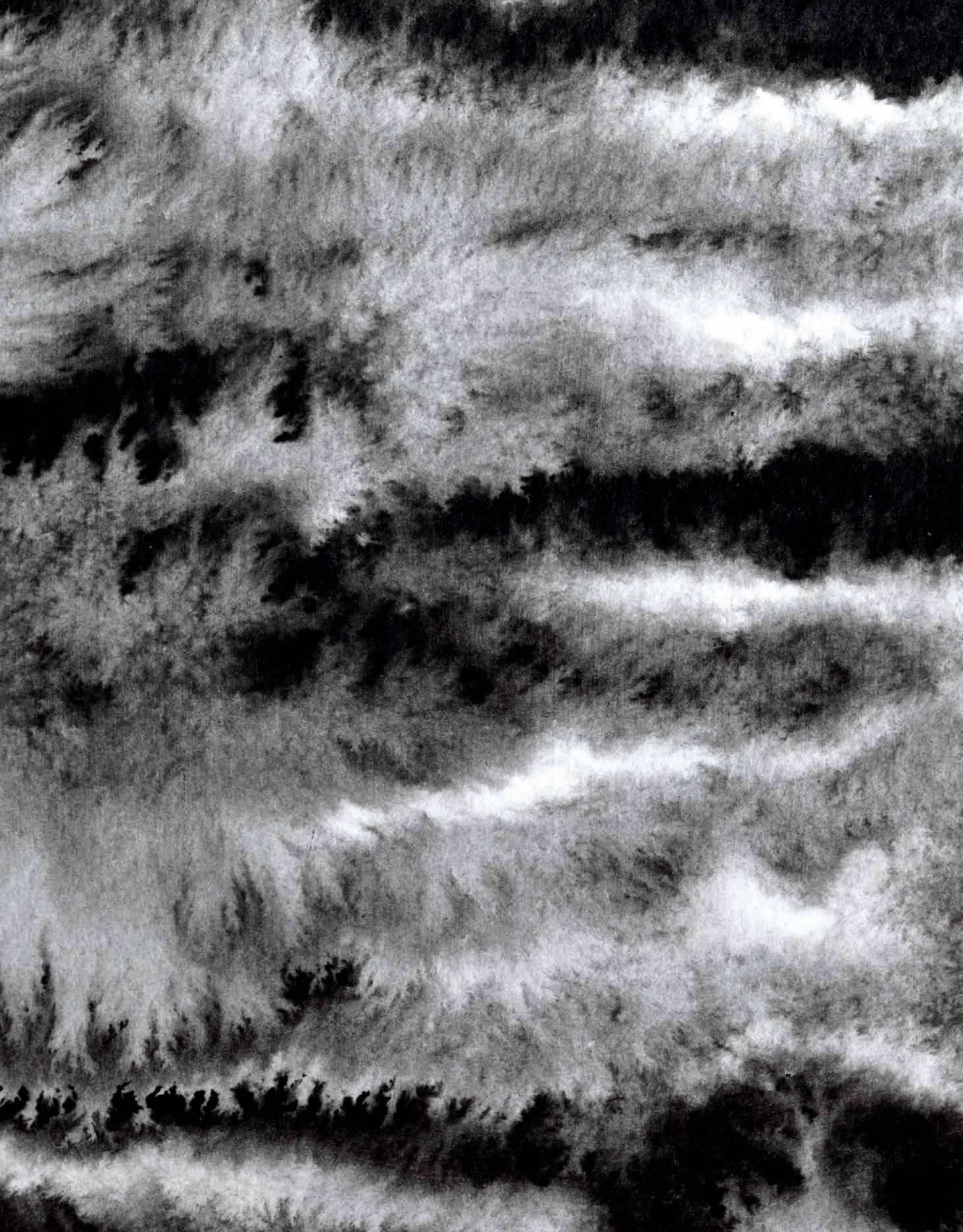


# Spilled Ink

Planks

 EF Contract®



### **We're EF Contract.**

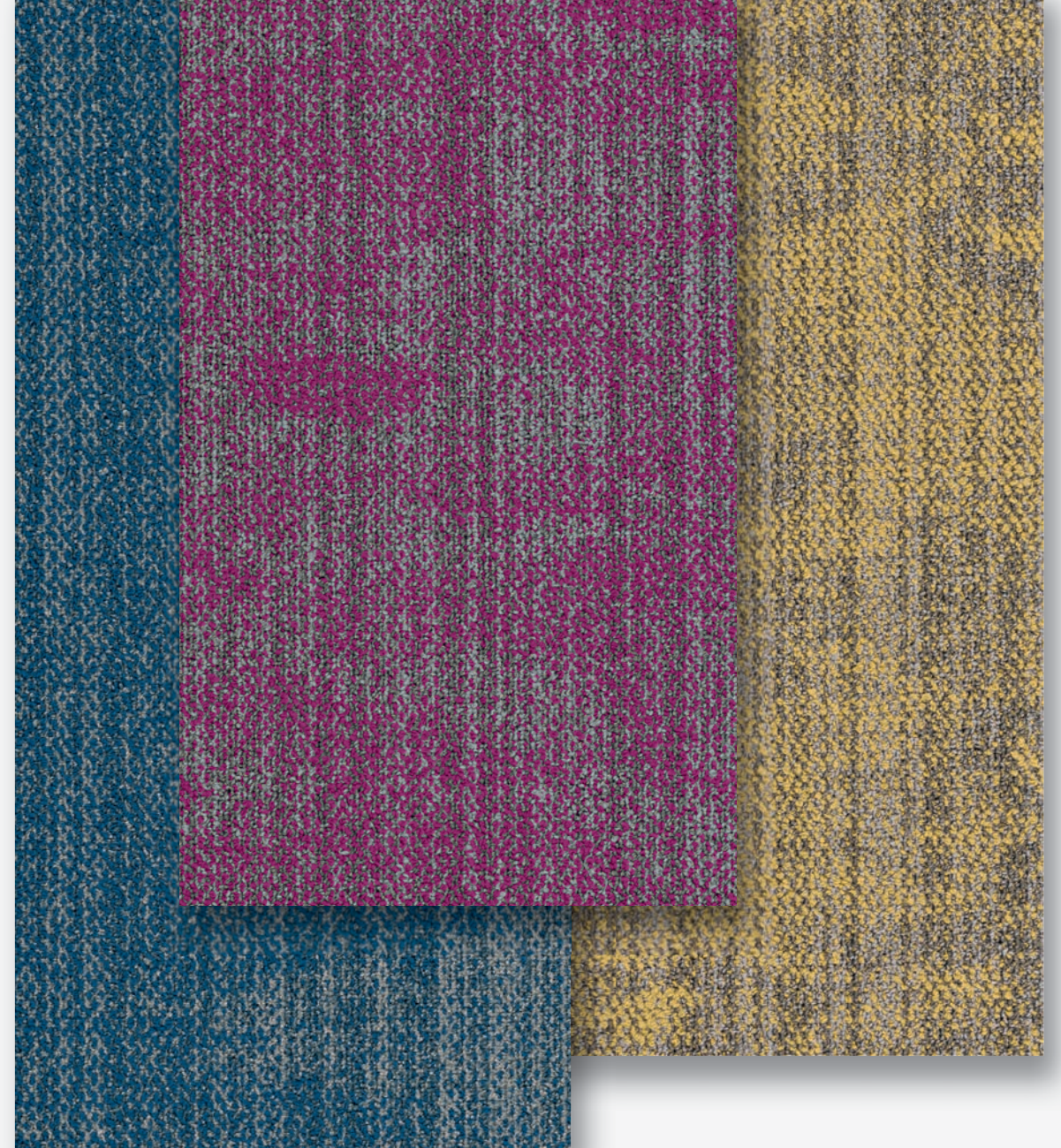
Part of the fastest-growing, most progressive family of flooring companies, we stand for confidence in quality, relentless service and doing right by all.

Our products are inspired by you: offering the carpet and hard-surface flooring that you want and need, that you've been seeking but unable to find, until now.

Every collection, pattern and colorway are created with best in class performance and in pursuit of design that is simply beautiful.

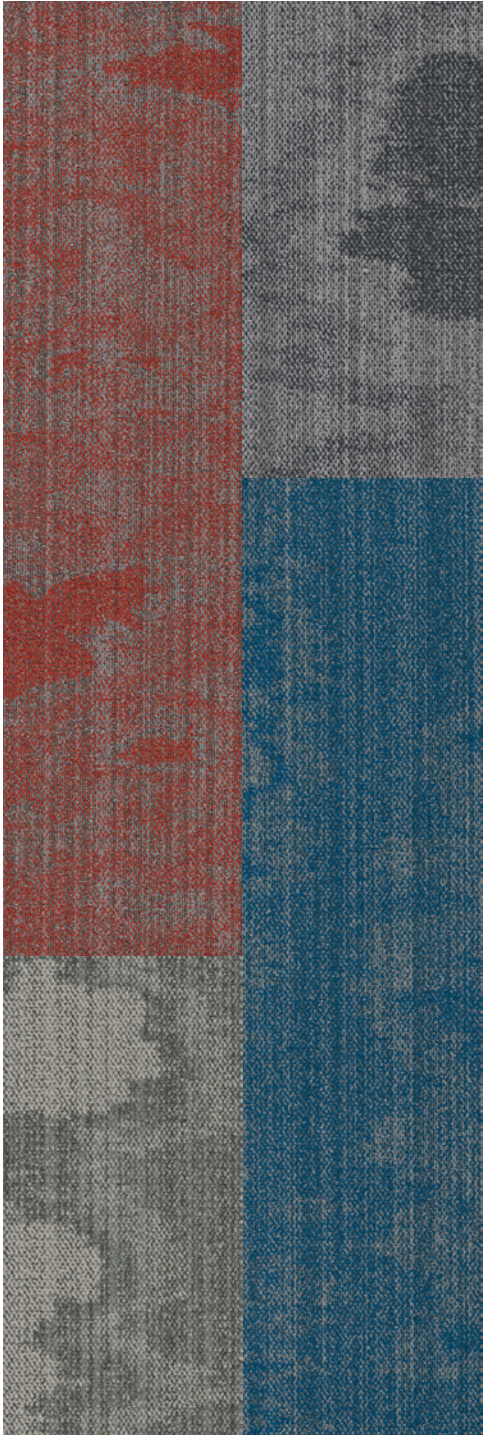
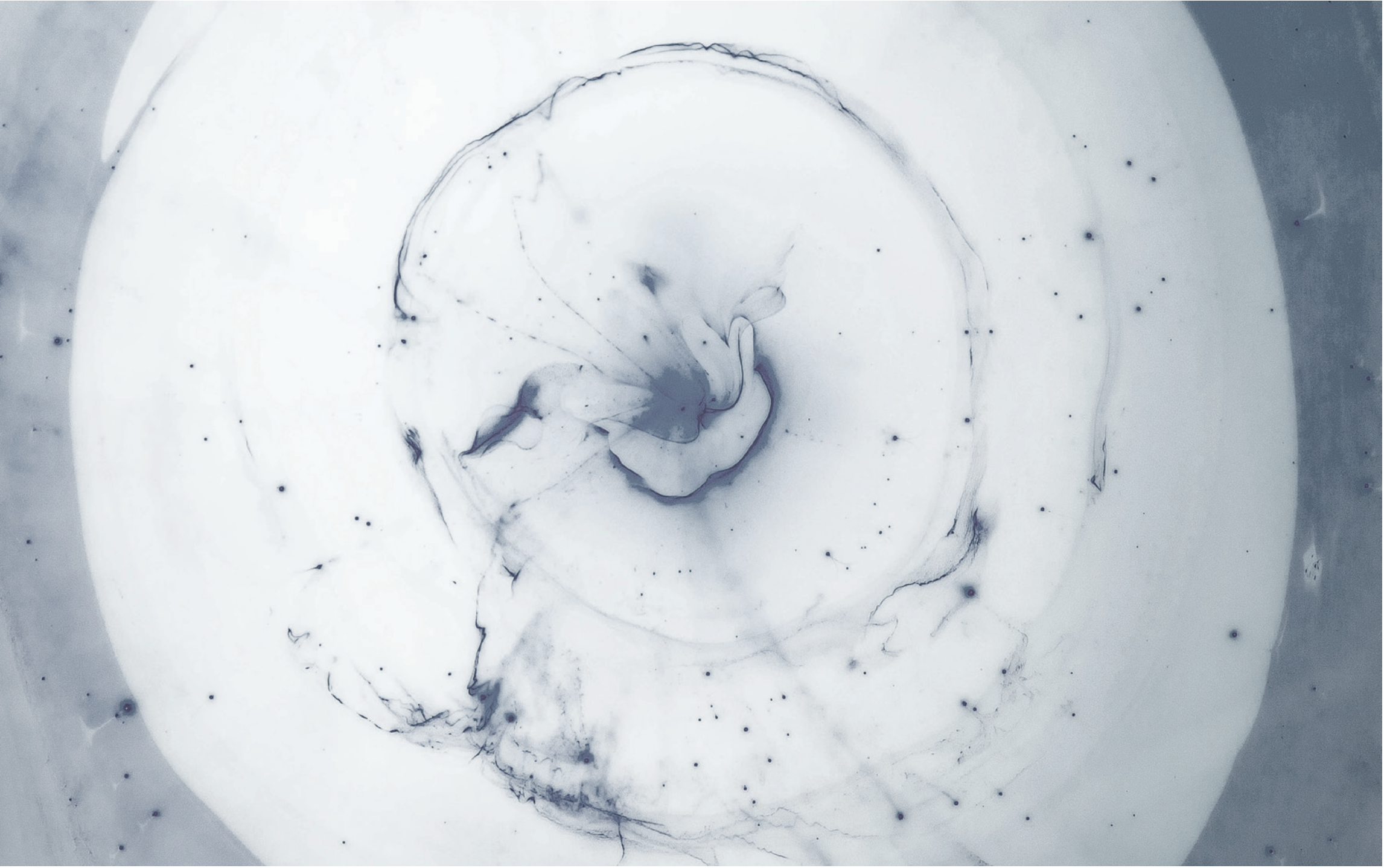
---

Modular carpet has transformed the flooring industry with its durability, ease of maintenance and design flexibility. We go even further, creating wide-ranging formats including squares, planks and skinny planks — as well as patterns and colorways that enable a custom look to every floor. So you can install coordinating products or even multiple colors of a single design to create variety within your space.

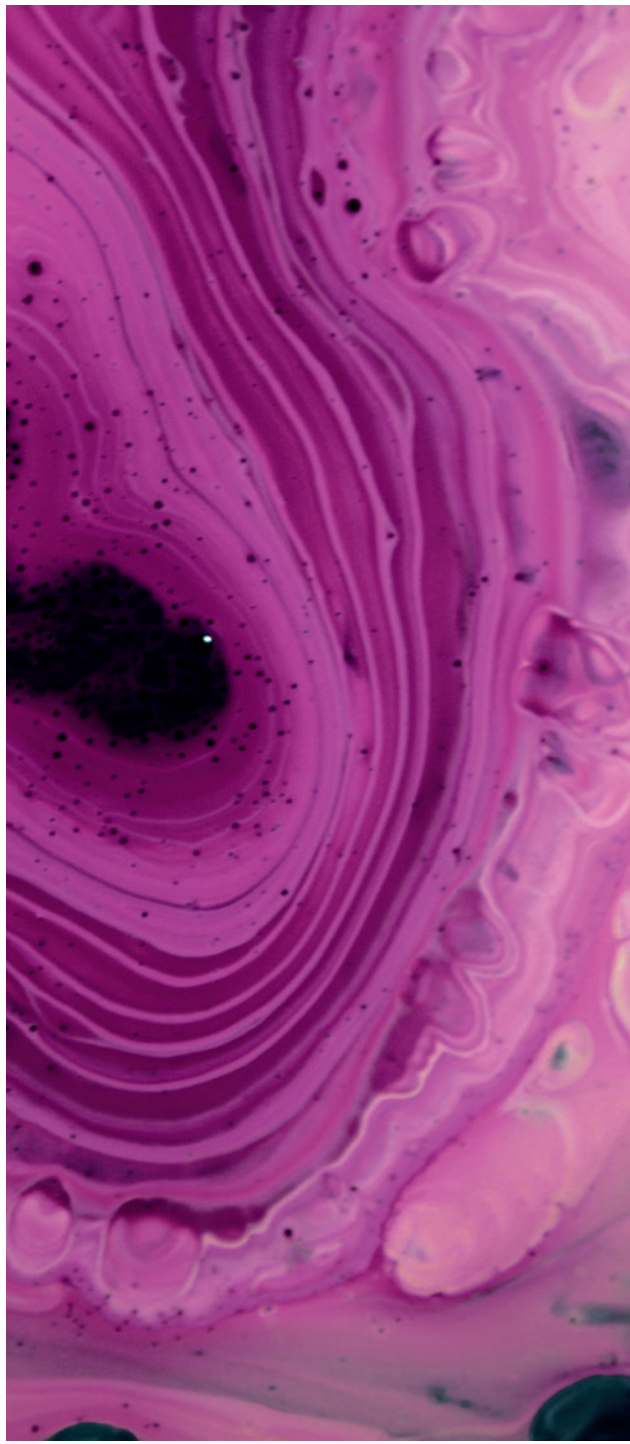


## Spilled Ink

Ink spilled on a tabletop, or in water, creates ribbons, swirls and drifting cloud shapes. A pattern that is both irregular and gently continuous, Spilled Ink flows with calm movement across the floor; bringing a luxurious look and feel to any space.



BLOT - MATADOR / SEEP - QUARRY / SEEP - CHARRED / POOL - LUMINOL



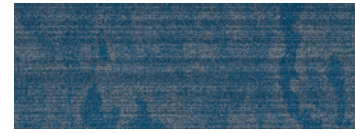


BLOT - DRIFTWOOD

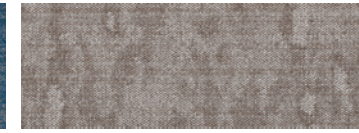




# BLOT



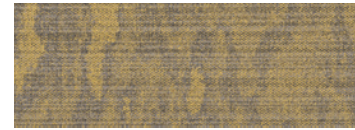
BLOT | BOT44  
LUMINOL



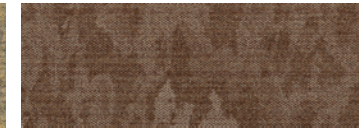
BLOT | BOT13  
DRIFTWOOD



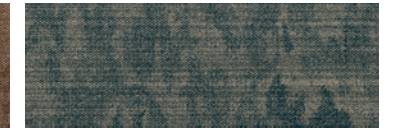
BLOT | BOT23  
OCHRE



BLOT | BOT24  
CANARY



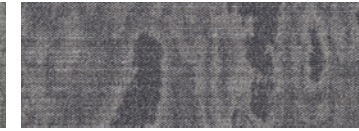
BLOT | BOT26  
SEPIA



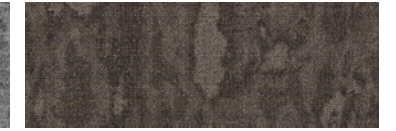
BLOT | BOT45  
SQUID



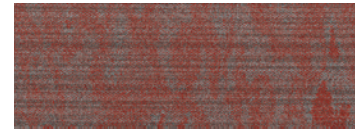
BLOT | BOT53  
QUARRY



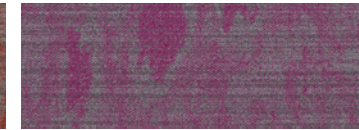
BLOT | BOT54  
CHARRED



BLOT | BOT77  
ROOTED



BLOT | BOT84  
MATADOR

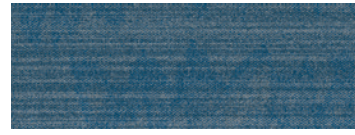


BLOT | BOT94  
CONCORD

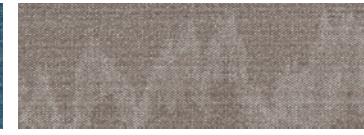
Style	BLOT   TBOT
Construction	PATTERNED SCROLL
Fiber Type	ENCORE® SD NYLON
Dye Method	SOLUTION DYED
Ounce Weight	24 OZ / YD2
Gauge	1/12 IN
Backing	NEXUS® MODULAR
Density	9,391
Size	12" W X 48" L



## SEEP



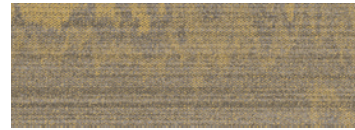
SEEP | SEP44  
LUMINOL



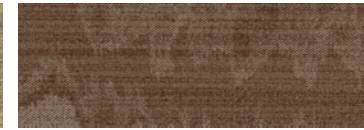
SEEP | SEP13  
DRIFTWOOD



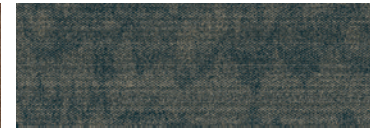
SEEP | SEP23  
OCHRE



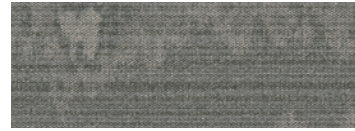
SEEP | SEP24  
CANARY



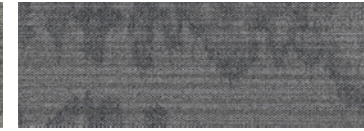
SEEP | SEP26  
SEPIA



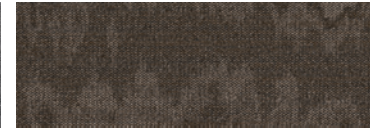
SEEP | SEP45  
SQUID



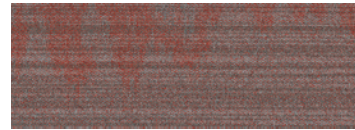
SEEP | SEP53  
QUARRY



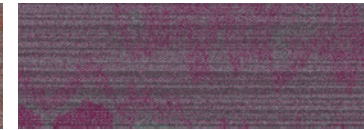
SEEP | SEP54  
CHARRED



SEEP | SEP77  
ROOTED



SEEP | SEP84  
MATADOR



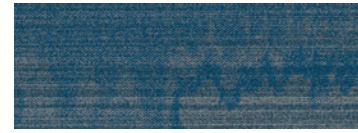
SEEP | SEP94  
CONCORD

Style	SEEP   TSEP
Construction	PATTERNED SCROLL
Fiber Type	ENCORE® SD NYLON
Dye Method	SOLUTION DYED
Ounce Weight	24 OZ / YD2
Gauge	1/12 IN
Backing	NEXUS® MODULAR
Density	7,579
Size	12" W X 48" L

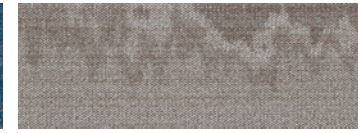




# POOL



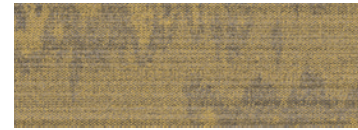
POOL | POL44  
LUMINOL



POOL | POL13  
DRIFTWOOD



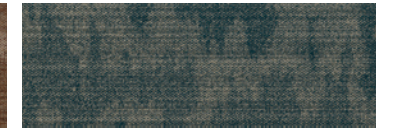
POOL | POL23  
OCHRE



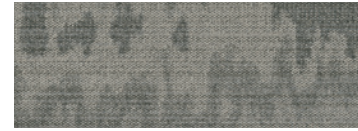
POOL | POL24  
CANARY



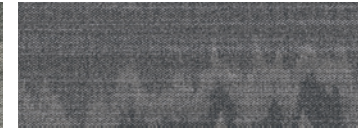
POOL | POL26  
SEPIA



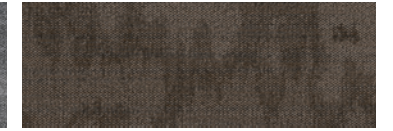
POOL | POL45  
SQUID



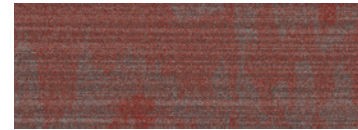
POOL | POL53  
QUARRY



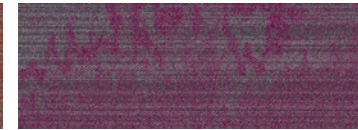
POOL | POL54  
CHARRED



POOL | POL77  
ROOTED



POOL | POL84  
MATADOR



POOL | POL94  
CONCORD

Style	POOL   TPOL
Construction	PATTERNED SCROLL
Fiber Type	ENCORE® SD NYLON
Dye Method	SOLUTION DYED
Ounce Weight	24 OZ / YD2
Gauge	1/12 IN
Backing	NEXUS® MODULAR
Density	8,229
Size	12" W X 48" L

PRODUCT DETAILS

Fiber

ENCORE® SD ULTIMA® (WITH RECYCLED CONTENT)

Encore SD Ultima is specifically engineered to maximize appearance retention with exceptional color, performance, sustainability and practicality.

PRECISIONCOLOR TECHNOLOGY™

PrecisionColor Technology™ is a pioneering accomplishment in patented fiber cabling and heat-set process that allows products to achieve a space-dyed appearance with 100% solution-dyed fibers.

Backings

NEXUS® MODULAR

Nexus modular products can be installed in a variety of ways and are performance engineered to be visually appealing. In addition, they are designed to accommodate your long-term flooring budget.

- Contains pre-consumer recycled content and contributes to LEED
- Recyclable through EF Contract's R4 Carpet Reclamation Program

Adhesives

COMMERCIALON® PREMIUM MODULAR ADHESIVE

A high-strength acrylic latex-based carpet adhesive specifically formulated for bonding modular PVC-backed carpet to the floor. This premium adhesive is for use with all Nexus Modular Tile products. This adhesive is guaranteed for the life of the installation when used in accordance with the EF Contract Carpet Installation Handbook. Commercialon Premium Modular Adhesive meets the CRI Low-VOC Emission Criteria. Commercialon Premium Modular Adhesive is nontoxic, has ultra-low odor and is antimicrobial in the dry state.



Optional

TILETABS®

Technologies

PROTEX® SOIL RELEASE

ProTex is a proprietary fluorochemical technology that is applied and bonded to the pile fiber to impede soiling and to improve cleanability. It is standard on all EF Contract flooring products.

ProTex works similarly to the technology used in nonstick cookware by lowering the surface energy of the fibers, which increases soil release properties. Very small soil particles cause carpet to appear dull. Thanks to ProTex, small soil particles are effectively removed by vacuuming or wet cleaning.

Optional

PROSEPT® ANTIMICROBIAL

SENTIR® ADVANCED ODOR-BLOCKING TECHNOLOGY

©2018 Engineered Floors LLC - This unique design is protected under the U.S. Copyright Act of 1976. Any unauthorized copying or duplication of this design constitutes copyright infringement in violation of federal law.

Due to the unique visual characteristics of modular carpets, pattern repeats and pattern run-off, seams may appear more noticeable than in broadloom carpets. Such visual characteristics do not constitute a manufacturing defect, and as such, should be considered when selecting modular carpet and its installation. These photographs are representations of the installation for this modular product. Your modular installation may look different than these photos depending upon individual tile placement, lighting and overall space layout, including furnishings. Final tile placement and the resulting visual is thus the customer's, and not EF Contract's, responsibility.

To learn more, visit:

EFCONTRACTFLOORING.COM

STYLE	BLOT   TBOT	SEEP   TSEP	POOL   TPOL
CONSTRUCTION	PATTERNED SCROLL	PATTERNED SCROLL	PATTERNED SCROLL
FIBER TYPE	ENCORE® SD NYLON	ENCORE® SD NYLON	ENCORE® SD NYLON
DYE METHOD	SOLUTION DYED	SOLUTION DYED	SOLUTION DYED
OUNCE WEIGHT	24 OZ	24 OZ	24 OZ
GAUGE	1/12 IN	1/12 IN	1/12 IN
BACKING	NEXUS® MODULAR	NEXUS® MODULAR	NEXUS® MODULAR
SIZE	12" W X 48" L	12" W X 48" L	12" W X 48" L
FINISHED PILE THICKNESS	.092 INCHES	.114 INCHES	.081 INCHES
DENSITY	9,391	7,579	7,579
SPECIAL TECHNOLOGY	SOIL RELEASE	SOIL RELEASE	SOIL RELEASE
OPTIONAL SPECIAL TECHNOLOGIES	PROSEPT® ANTIMICROBIAL SENTIR® ADVANCED ODOR BLOCKING TREATMENT	PROSEPT® ANTIMICROBIAL SENTIR® ADVANCED ODOR BLOCKING TREATMENT	PROSEPT® ANTIMICROBIAL SENTIR® ADVANCED ODOR BLOCKING TREATMENT
PHYSICAL TESTING	FLOORING RADIANT PANEL – (CLASS 1) PILL TEST – (PASSES) SMOKE DENSITY – (LESS THAN 450 FLAMING) STATIC GENERATION – (LESS THAN 3.5 KV)	FLOORING RADIANT PANEL – (CLASS 1) PILL TEST – (PASSES) SMOKE DENSITY – (LESS THAN 450 FLAMING) STATIC GENERATION – (LESS THAN 3.5 KV)	FLOORING RADIANT PANEL – (CLASS 1) PILL TEST – (PASSES) SMOKE DENSITY – (LESS THAN 450 FLAMING) STATIC GENERATION – (LESS THAN 3.5 KV)

WARRANTIES	LIFETIME FIBER PERFORMANCE FOR WEAR	LIFETIME FIBER PERFORMANCE FOR WEAR	LIFETIME FIBER PERFORMANCE FOR WEAR
	LIFETIME FIBER PERFORMANCE FOR STATIC	LIFETIME FIBER PERFORMANCE FOR STATIC	LIFETIME FIBER PERFORMANCE FOR STATIC
	LIFETIME STAIN REMOVAL	LIFETIME STAIN REMOVAL	LIFETIME STAIN REMOVAL
	LIFETIME COLORFASTNESS TO LIGHT AND ATMOSPHERIC CONTAMINANTS	LIFETIME COLORFASTNESS TO LIGHT AND ATMOSPHERIC CONTAMINANTS	LIFETIME COLORFASTNESS TO LIGHT AND ATMOSPHERIC CONTAMINANTS
	LIFETIME FOR TUFT BIND STRENGTH	LIFETIME FOR TUFT BIND STRENGTH	LIFETIME FOR TUFT BIND STRENGTH
	(EDGE RAVEL, YARN PULLS, ZIPPERING)	(EDGE RAVEL, YARN PULLS, ZIPPERING)	(EDGE RAVEL, YARN PULLS, ZIPPERING)
	LIFETIME AGAINST DELAMINATION	LIFETIME AGAINST DELAMINATION	LIFETIME AGAINST DELAMINATION
	LIFETIME DIMENSIONAL STABILITY	LIFETIME DIMENSIONAL STABILITY	LIFETIME DIMENSIONAL STABILITY

RECOMMENDED INSTALLATION METHODS

12" W X 48" L PLANKS





1502 Coronet Drive  
Dalton, Georgia 30720  
U.S.A.

800.451.1250  
[efcontractflooring.com](http://efcontractflooring.com)