

An aerial, high-angle photograph of a construction site, rendered in a dark, monochromatic style. The image shows a large, rectangular excavation or foundation pit. Several workers in dark clothing are visible, some crouching or kneeling on the ground, others standing. There are various pieces of equipment and materials scattered around the site. The overall scene is one of active construction work.

# Quickship

Fragments  
Checkmate  
District  
Control



## **Hello. And nice to meet you.**

We're EF Contract.

Part of the fastest-growing, most progressive family of flooring companies, we stand for confidence in quality. For relentless service. For doing right by all.

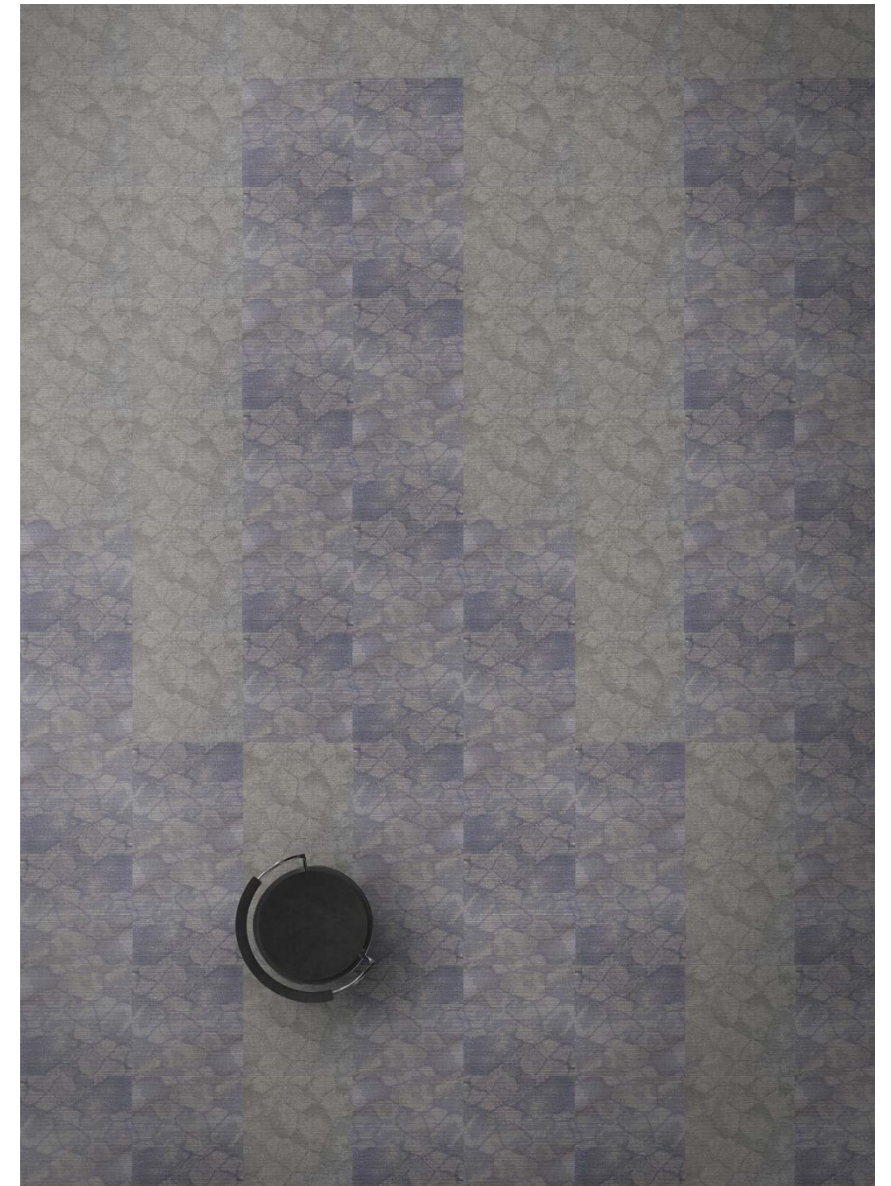
Every collection, every pattern, every color way, is created in pursuit of design that is surprisingly, and simply, beautiful. Our work is inspired by you: what you want, what you need, what you've been seeking and unable to find.

---

It's always simple to work with EF Contract. With our Quickship program, it's also faster than ever before.

Every product in these collections is shipped (1,500 yards or less) within 10 business days of your order — all with remarkable service. Every project, every time. For more information, contact your Account Executive or call 800-451-1250.

 **EF Contract™**



## FRAGMENTS

Understated and artful, Fragments is inspired by pottery that uses crackle glaze as a decorative feature. A mid-to-large geometric pattern accented with a slight feathering texture that creates subtle shadows across the floor.

3 color combinations, each of which include a hint of metallic sparkle.

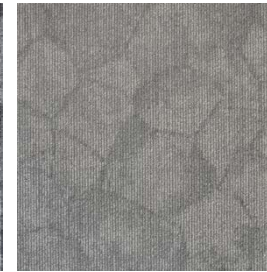




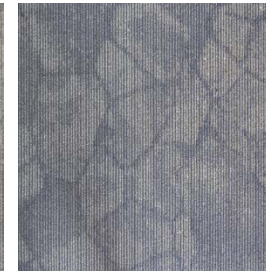
## FRAGMENTS



FRAGMENTS | FRG53  
SNIPPET

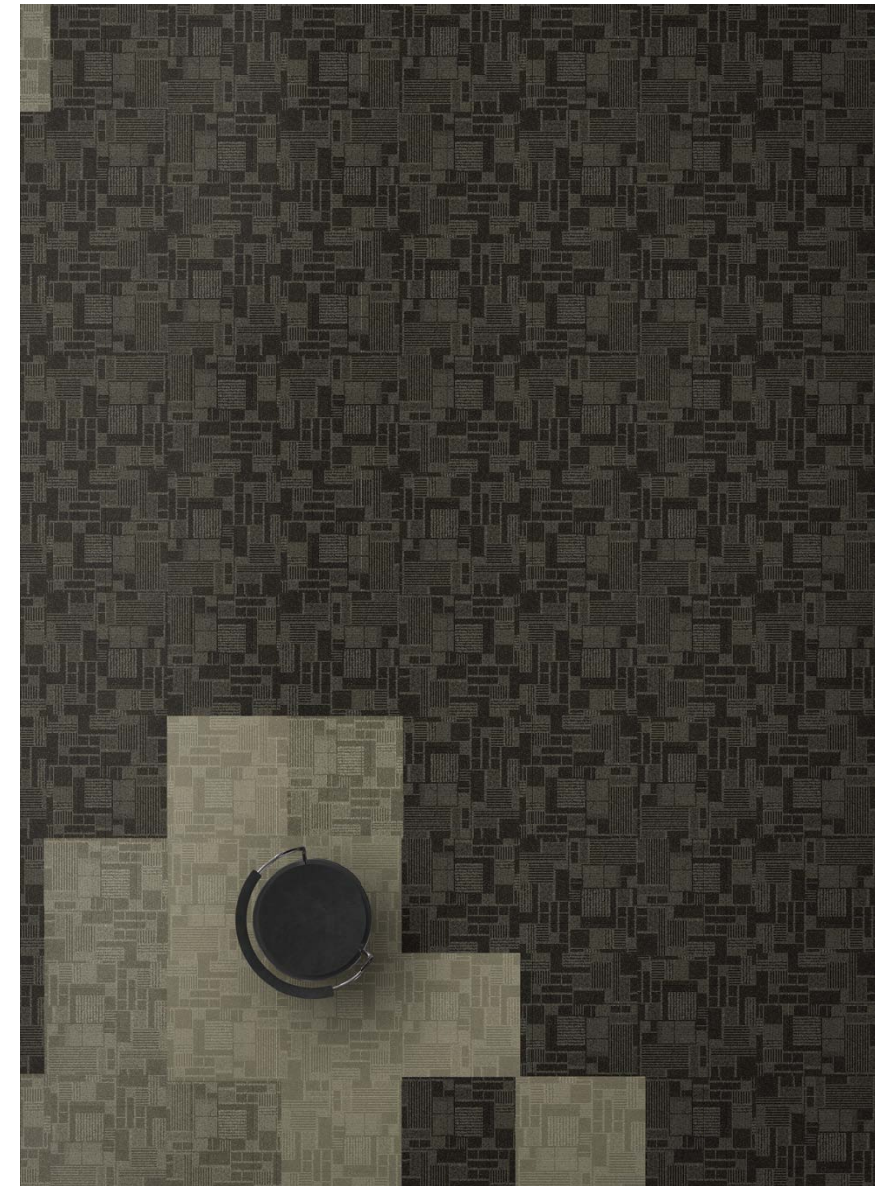


FRAGMENTS | FRG45  
CRACK-UP



FRAGMENTS | FRG58  
CRINKLE

Style	FRAGMENTS   TFRG
Construction	PATTERNED SCROLL
Fiber Type	ENCORE® SD NYLON
Dye Method	SOLUTION DYED
Ounce Weight	15 OZ/YD2
Gauge	1/12 (4.72 ROWS/CM)
Backing	NEXUS®
Average Density	5,400
Size	24" W X 24"



## CHECKMATE

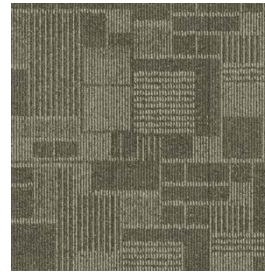
A strongly patterned series of right angles, overlaid on tonal fields of color, creates a structural look. Quarter turn or monolithic installations create entirely different looks and a custom feel.

3 color combinations are inspired by classic and modern checkered fabrics.

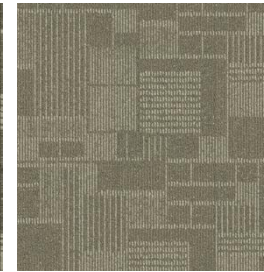




## CHECKMATE



CHECKMATE | CHK54  
CRYSTAL BALL

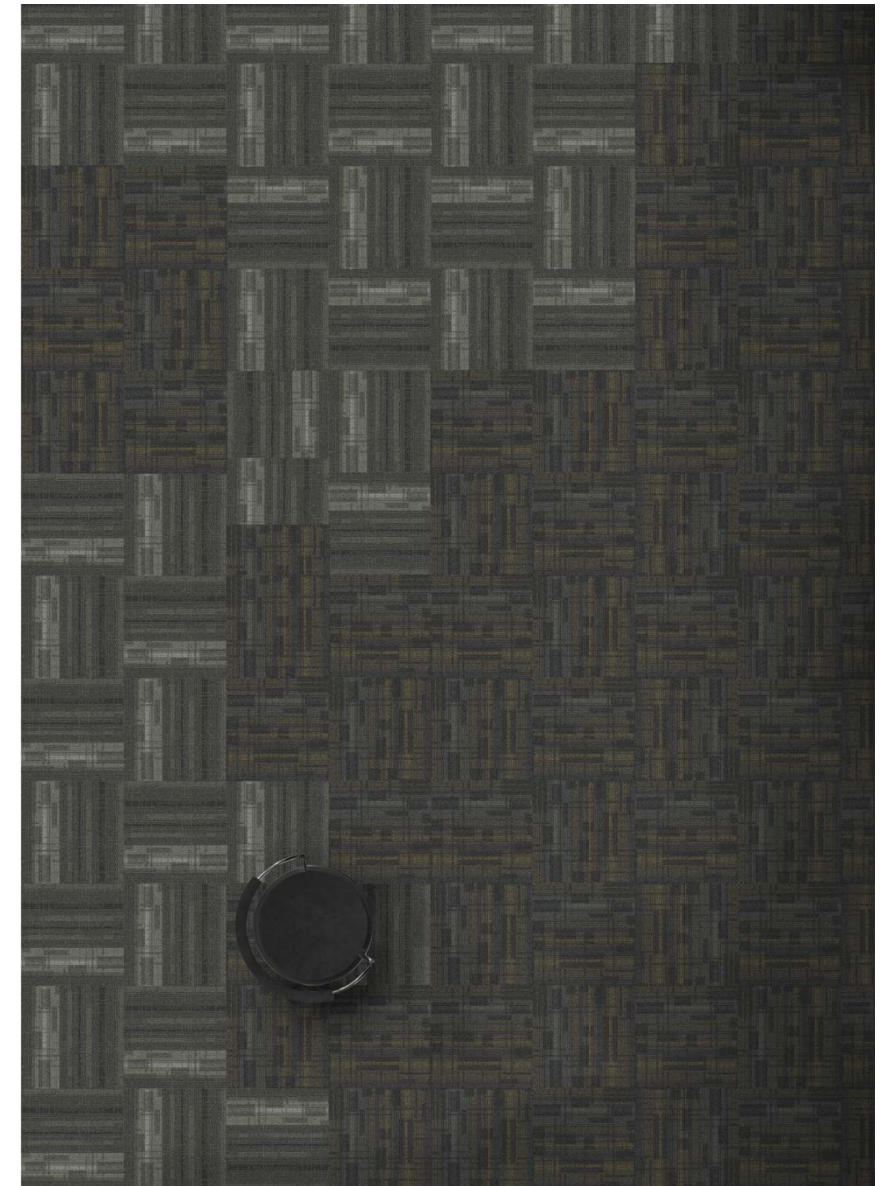


CHECKMATE | CHK12  
COTTONWOOD



CHECKMATE | CHK59  
BROWN GRIZZLY

Style	CHECKMATE   TCHK
Construction	PATTERNED SCROLL
Fiber Type	ENCORE® SD NYLON
Dye Method	SOLUTION DYED
Ounce Weight	15 OZ/YD2
Gauge	1/12 (4.72 ROWS/CM)
Backing	NEXUS®
Density	5,510
Size	24" W X 24"



## DISTRICT

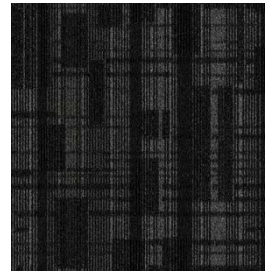
A bold block pattern inspired by urban grids, District defines new boundaries. Subtle gradations of color complement the look, blurring the lines of what it means for design to be geometric.

3 color combinations, with hints of accent color.

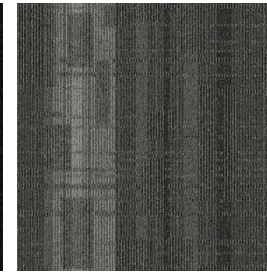




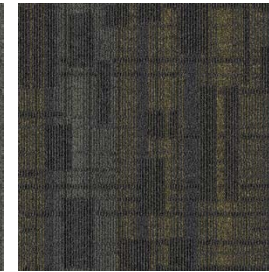
## DISTRICT



DISTRICT | DTR58  
CITY LIMITS



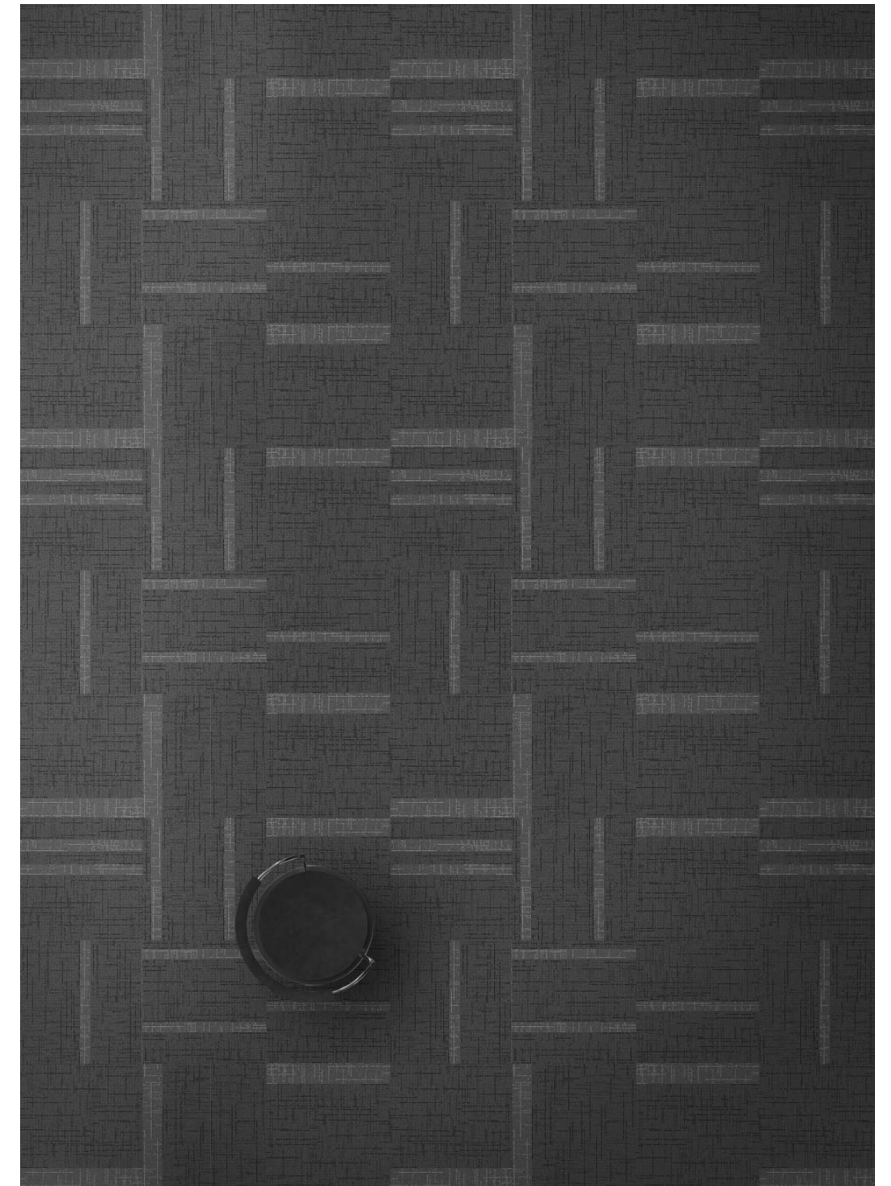
DISTRICT | DTR53  
OUT OF BOUNDS



DISTRICT | DTR56  
NECK OF THE WOODS

Style	DISTRICT   TDTR
Construction	PATTERNED SCROLL
Fiber Type	ENCORE® SD NYLON
Dye Method	SOLUTION DYED
Ounce Weight	14 OZ/YD2
Gauge	1/12 (4.72 ROWS/CM)
Backing	NEXUS®
Density	4,500
Size	24" W X 24"

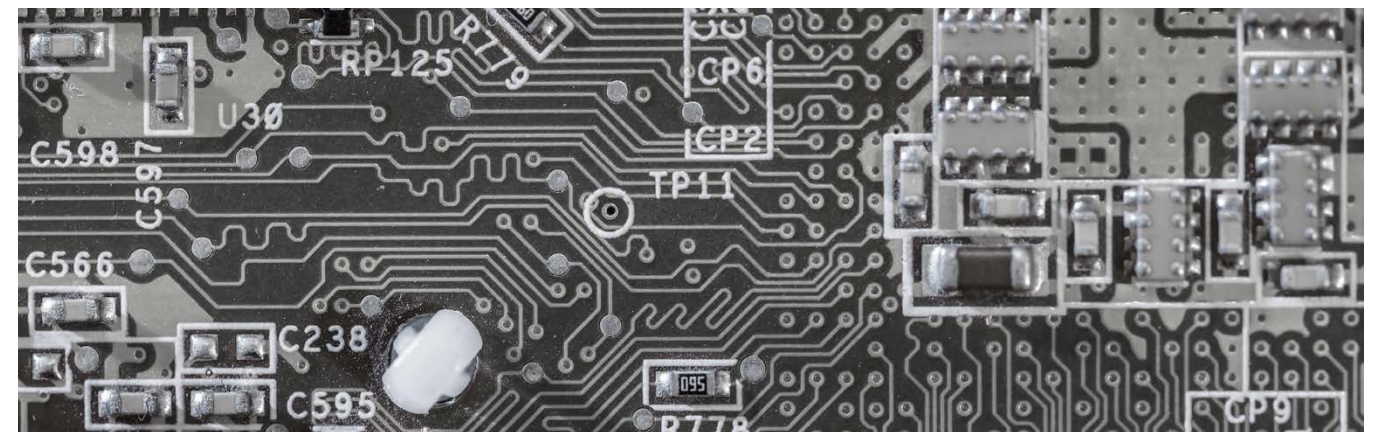


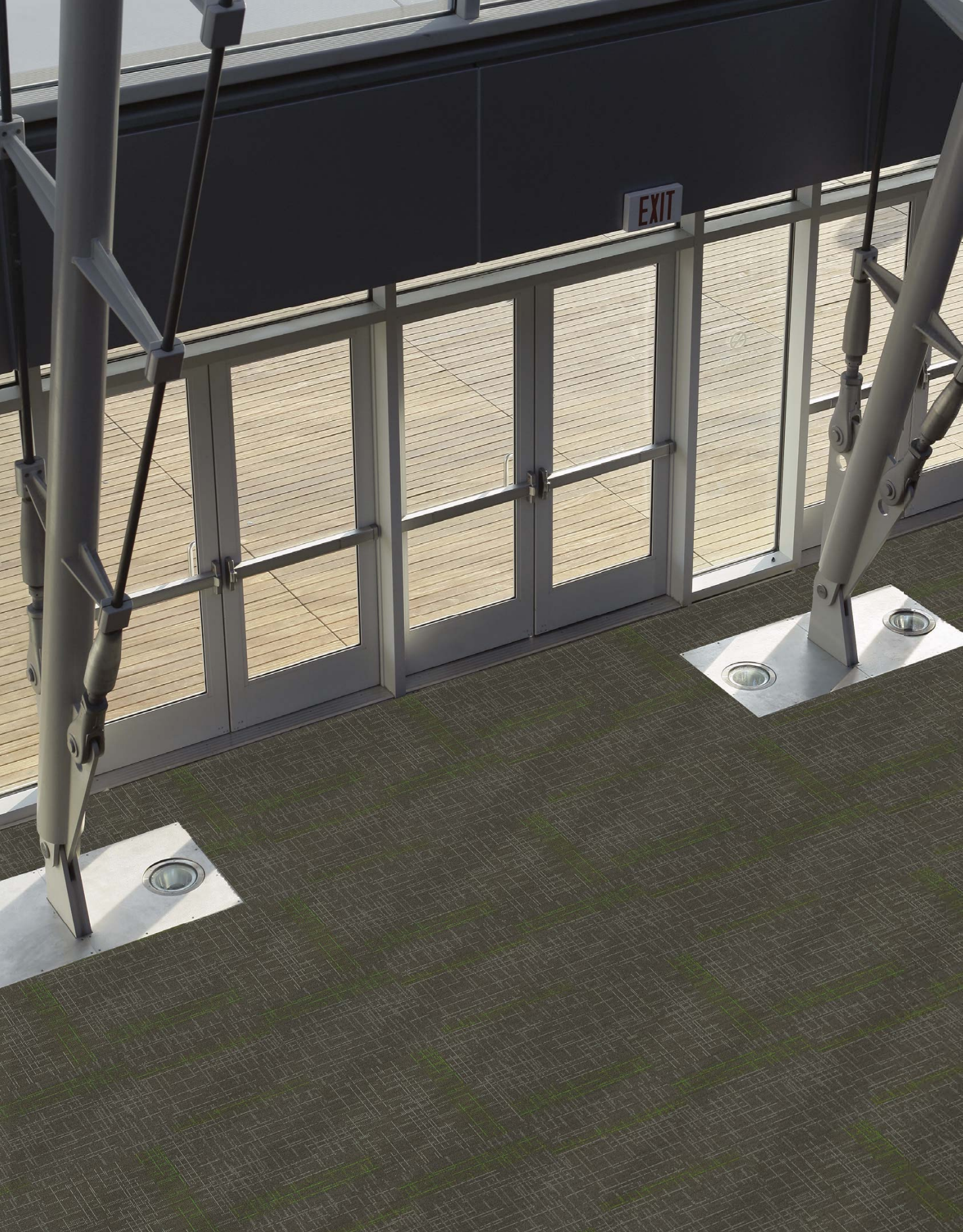


## CONTROL

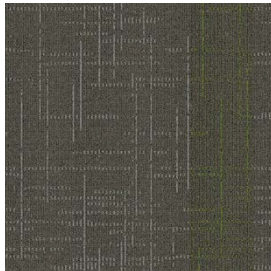
Drawing inspiration from technologies that we use every day, like keyboard shortcuts and circuit boards — but with an edgy look and feel. A broken linear pattern with coordinating bursts of color, that can be installed quarter turned or monolithic.

3 color combinations perfect for any space, from corporate to tech startups.

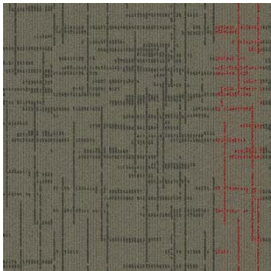




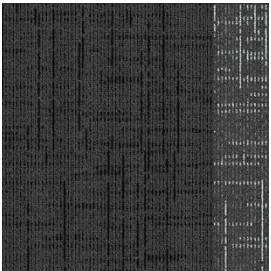
CONTROL



CONTROL | CTL54  
ALT



CONTROL | CTL55  
TAB



CONTROL | CTL57  
COMMAND

Style	CONTROL   TCTL
Construction	PATTERNED SCROLL
Fiber Type	ENCORE® SD NYLON
Dye Method	SOLUTION DYED
Ounce Weight	15 OZ/YD2
Gauge	1/12 (4.72 ROWS/CM)
Backing	NEXUS®
Average Density	5,400
Size	24" W X 24"

## PRODUCT DETAILS

---

### Fiber

#### ENCORE® BCF NYLON WITH COLORLOC® PLUS

Encore BCF nylon with ColorLoc Plus is manufactured to offer exceptional color, performance and appearance retention. Carpet using Encore BCF nylon with ColorLoc Plus - our patented stain resistant technology - is engineered to resist permanent staining and is backed by Lifetime Performance Warranties for stain resistance, colorfastness, color transfer, water bleed, bleach resistance and wear.

### Backings

#### NEXUS® MODULAR

Nexus modular products can be installed in a variety of ways and are performance engineered to be visually appealing. In addition, they are designed to accommodate your long-term flooring budget.

- Contains pre-consumer recycled content and contributes to LEED
- Recyclable through the EF Contract's R4 Carpet Reclamation Program

### Adhesives

#### COMMERCIALON® PREMIUM MODULAR ADHESIVE

A high strength acrylic latex-based carpet adhesive specifically formulated for bonding modular PVC backed carpet to the floor. This premium adhesive is for use with all Nexus Modular Tile products. This adhesive is guaranteed for the life of the installation when used in accordance with the EF Contract Carpet Installation Handbook. Commercialon Premium Modular Adhesive meets the CRI Low-VOC Emission Criteria. Commercialon Premium Modular Adhesive is non toxic, has ultra-low odor and is antimicrobial in the dry state.

### Optional

#### TILETABS®

### Technologies

#### PROTEX® SOIL RELEASE

ProTex is a proprietary fluorochemical technology that is applied and bonded to the pile fiber to impede soiling and to improve cleanability. It is standard on all EF Contract flooring products.

ProTex works similarly to the technology used in nonstick cookware by lowering the surface energy of the fibers which increases soil release properties. Very small soil particles cause carpet to appear dull. Thanks to ProTex, small soil particles are effectively removed by vacuuming or wet cleaning.

### Optional

#### PROSEPT® ANTIMICROBIAL

#### SENTIR® ADVANCED ODOR-BLOCKING TECHNOLOGY

©2018 Engineered Floors LLC - This unique design is protected under the U.S. Copyright Act of 1976. Any unauthorized copying or duplication of this design constitutes copyright infringement in violation of federal law.

Due to the unique visual characteristics of modular carpets, pattern repeats and pattern run-off seams may appear more noticeable than in broadloom carpets. Such visual characteristics do not constitute a manufacturing defect, and as such, should be considered when selecting modular carpet and its installation. These photographs are representations of the installation for this modular product. Your modular installation may look different than these photos depending upon individual tile placement, lighting, and overall space layout, including furnishings. Final tile placement and the resulting visual is thus the customer's, and not EF Contract's responsibility.











To learn more, visit:

[EFCONTRACTFLOORING.COM](http://EFCONTRACTFLOORING.COM)





STYLE	FRAGMENTS TRFG SQUARE	CHECKMATE TCHK SQUARE	DISTRICT TDTR MODULAR	CONTROL TCTL MODULAR				
CONSTRUCTION	PATTERNED SCROLL	PATTERNED SCROLL	PATTERNED SCROLL	PATTERNED SCROLL				
FIBER TYPE	ENCORE® SD NYLON	ENCORE® SD NYLON	ENCORE® SD NYLON	ENCORE® SD NYLON				
DYE METHOD	SOLUTION DYED	SOLUTION DYED	SOLUTION DYED	SOLUTION DYED				
OUNCE WEIGHT	15 OZ/SY (508 GRAMS/M2)	15 OZ/SY (508 GRAMS/M2)	14OZ/SY (425 GRAMS/M2)	15 OZ/SY (508 GRAMS/M2)				
GAUGE	1/12 (47.2 ROWS/CM)	1/12 (47.2 ROWS/CM)	1/12 (47.2 ROWS/CM)	1/12 (47.2 ROWS/CM)				
BACKING	NEXUS® MODULAR	NEXUS® MODULAR	NEXUS® MODULAR	NEXUS® MODULAR				
SIZE	24" X 24"	24" X 24"	24" X 24"	24" X 24"				
PATTERN REPEAT	N/A	N/A	N/A	N/A				
FINISHED PILE THICKNESS	.098 INCHES (2.5 MM)	.098 INCHES (2.5 MM)	.112 INCHES (2.8 MM)	.106 INCHES (2.70 MM)				
SPECIAL TECHNOLOGY	PROTEX® FLUORO-CHEMICAL	PROTEX® FLUORO-CHEMICAL	PROTEX® FLUORO-CHEMICAL	PROTEX® FLUORO-CHEMICAL				
OPTIONAL SPECIAL TECHNOLOGIES	PROSEPT® ANTIMICROBIAL	PROSEPT® ANTIMICROBIAL	PROSEPT® ANTIMICROBIAL	PROSEPT® ANTIMICROBIAL				
	SENTIR® ADVANCED ODOR BLOCKING TREATMENT	SENTIR® ADVANCED ODOR BLOCKING TREATMENT	SENTIR® ADVANCED ODOR BLOCKING TREATMENT	SENTIR® ADVANCED ODOR BLOCKING TREATMENT				
PHYSICAL TESTING	FLOORING RADIANT PANEL – (CLASS 1)	FLOORING RADIANT PANEL – (CLASS 1)	FLOORING RADIANT PANEL – (CLASS 1)	FLOORING RADIANT PANEL – (CLASS 1)				
	PILL TEST – (PASSES)	PILL TEST – (PASSES)	PILL TEST – (PASSES)	PILL TEST – (PASSES)				
	SMOKE DENSITY – (LESS THAN 450 FLAMING)	SMOKE DENSITY – (LESS THAN 450 FLAMING)	SMOKE DENSITY – (LESS THAN 450 FLAMING)	SMOKE DENSITY – (LESS THAN 450 FLAMING)				
	STATIC GENERATION – (LESS THAN 3.5 KV)	STATIC GENERATION – (LESS THAN 3.5 KV)	STATIC GENERATION – (LESS THAN 3.5 KV)	STATIC GENERATION – (LESS THAN 3.5 KV)				
WARRANTIES	LIFETIME FIBER PERFORMANCE FOR WEAR	LIFETIME FIBER PERFORMANCE FOR WEAR	LIFETIME FIBER PERFORMANCE FOR WEAR	LIFETIME FIBER PERFORMANCE FOR WEAR				
	LIFETIME FIBER PERFORMANCE FOR STATIC	LIFETIME FIBER PERFORMANCE FOR STATIC	LIFETIME FIBER PERFORMANCE FOR STATIC	LIFETIME FIBER PERFORMANCE FOR STATIC				
	LIFETIME STAIN REMOVAL	LIFETIME STAIN REMOVAL	LIFETIME STAIN REMOVAL	LIFETIME STAIN REMOVAL				
	LIFETIME COLORFASTNESS TO LIGHT AND	LIFETIME COLORFASTNESS TO LIGHT AND	LIFETIME COLORFASTNESS TO LIGHT AND	LIFETIME COLORFASTNESS TO LIGHT AND				
	ATMOSPHERIC CONTAMINANTS	ATMOSPHERIC CONTAMINANTS	ATMOSPHERIC CONTAMINANTS	ATMOSPHERIC CONTAMINANTS				
	LIFETIME FOR TUFT BIND STRENGTH	LIFETIME FOR TUFT BIND STRENGTH	LIFETIME FOR TUFT BIND STRENGTH	LIFETIME FOR TUFT BIND STRENGTH				
	(EDGE RAVEL, YARN PULLS, ZIPPERING)	(EDGE RAVEL, YARN PULLS, ZIPPERING)	(EDGE RAVEL, YARN PULLS, ZIPPERING)	(EDGE RAVEL, YARN PULLS, ZIPPERING)				
	LIFETIME AGAINST DELAMINATION	LIFETIME AGAINST DELAMINATION	LIFETIME AGAINST DELAMINATION	LIFETIME AGAINST DELAMINATION				
LIFETIME DIMENSIONAL STABILITY	LIFETIME DIMENSIONAL STABILITY	LIFETIME DIMENSIONAL STABILITY	LIFETIME DIMENSIONAL STABILITY					
RECOMMENDED INSTALLATION METHODS	 QUARTER TURN	 MONOLITHIC TURN	 QUARTER TURN	 MONOLITHIC TURN	 QUARTER TURN	 MONOLITHIC TURN	 QUARTER TURN	 MONOLITHIC TURN



 **EF Contract**<sup>™</sup>  
A DIVISION OF ENGINEERED FLOORS

1502 Coronet Drive  
Dalton, Georgia 30720  
U.S.A.

800.451.1250  
[efcontractflooring.com](http://efcontractflooring.com)