

Line Line Accent

Modular Carpet



We're EF Contract.

Part of the fastest-growing, most progressive family of flooring companies, we stand for confidence in quality, relentless service and doing right by all.

Our products are inspired by you: offering the carpet and hard-surface flooring that you want and need, that you've been seeking but unable to find, until now.

Every collection, pattern and colorway are created with best in class performance and in pursuit of design that is simply beautiful.

Modular carpet has transformed the flooring industry with its durability, ease of maintenance and design flexibility. We go even further, creating wide-ranging formats including squares, planks and skinny planks — as well as patterns and colorways that enable a custom look to every floor. So you can install coordinating products or even multiple colors of a single design to create variety within your space.



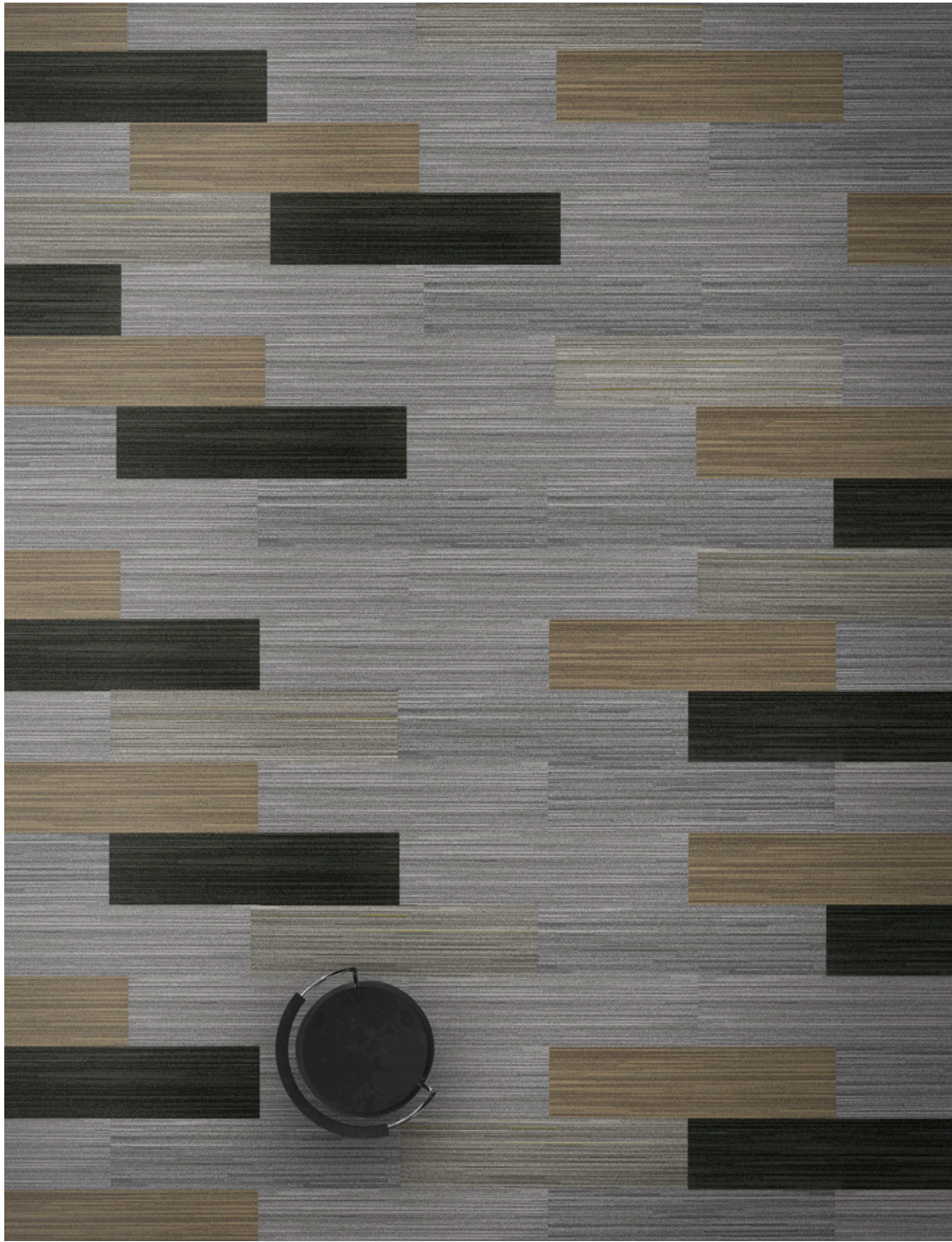
Line + Line Accent

Line is an organic, striated pattern that is highly textural. Tonal colors migrate throughout the striations, adding softness and understated elegance. Line Accent is a close cousin to Line but adds drama through bold, vibrant streaks of color.



LINE ACCENT - PIPE ACCENT / LINE ACCENT - IN A ROW ACCENT / LINE - CHARCOAL / LINE - DOODLE





LINE - PIPE / LINE - FUZZY / LINE - DOODLE / LINE ACCENT - PIPE ACCENT





LINE + LINE ACCENT

LINE



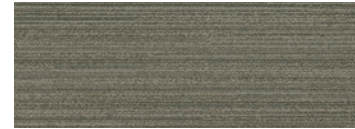
LINE | LNE12
FINE POINT



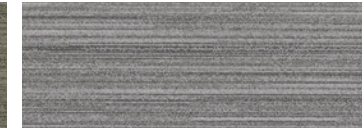
LINE | LNE21
BORDER



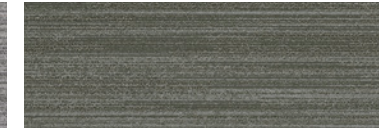
LINE | LNE23
SPLIT RAIL



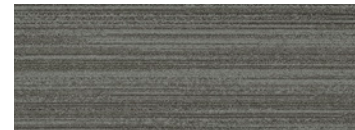
LINE | LNE35
TIMBER



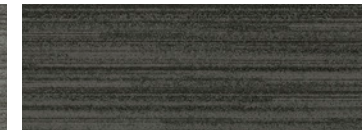
LINE | LNE52
PIPE



LINE | LNE54
IN A ROW



LINE | LNE56
CHARCOAL



LINE | LNE59
DOODLE

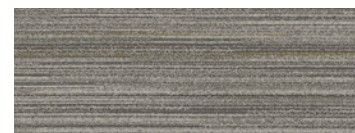


LINE | LNE75
FUZZY



LINE | LNE79
ROOF

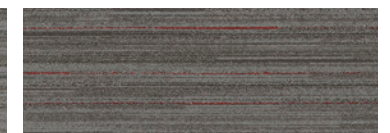
LINE ACCENT



LINE ACCENT | LNA53
PIPE ACCENT



LINE ACCENT | LNA55
IN A ROW ACCENT



LINE ACCENT | LNA57
CHARCOAL ACCENT

Style	LINE TLNE	LINE ACCENT TLNA
Construction	TIP-SHEARED SCROLL	TIP-SHEARED SCROLL
Fiber Type	ENCORE® SD NYLON	ENCORE® SD NYLON
Dye Method	SOLUTION DYED	SOLUTION DYED
Ounce Weight	22 OZ	22 OZ
Gauge	1/12 IN	1/12 IN
Backing	NEXUS® MODULAR	NEXUS® MODULAR
Density	6,000	6,000
Size	12" W X 48" L	12" W X 48" L

PRODUCT DETAILS

Fiber

ENCORE® SD ULTIMA® (WITH RECYCLED CONTENT)

Encore SD Ultima is specifically engineered to maximize appearance retention with exceptional color, performance, sustainability and practicality.

Backings

NEXUS® MODULAR

Nexus modular products can be installed in a variety of ways and are performance engineered to be visually appealing. In addition, they are designed to accommodate your long-term flooring budget.

- Contains pre-consumer recycled content and contributes to LEED
- Recyclable through EF Contract's R4 Carpet Reclamation Program

Adhesives

COMMERCIALON® PREMIUM MODULAR ADHESIVE

A high-strength acrylic latex-based carpet adhesive specifically formulated for bonding modular PVC-backed carpet to the floor. This premium adhesive is for use with all Nexus Modular Tile products. This adhesive is guaranteed for the life of the installation when used in accordance with the EF Contract Carpet Installation Handbook. Commercialon Premium Modular Adhesive meets the CRI Low-VOC Emission Criteria. Commercialon Premium Modular Adhesive is nontoxic, has ultra-low odor and is antimicrobial in the dry state.



Optional

TILETABS®

Technologies

PROTEX® SOIL RELEASE

ProTex is a proprietary fluorochemical technology that is applied and bonded to the pile fiber to impede soiling and to improve cleanability. It is standard on all EF Contract flooring products.

ProTex works similarly to the technology used in nonstick cookware by lowering the surface energy of the fibers, which increases soil release properties. Very small soil particles cause carpet to appear dull. Thanks to ProTex, small soil particles are effectively removed by vacuuming or wet cleaning.

Optional

PROSEPT® ANTIMICROBIAL

SENTIR® ADVANCED ODOR-BLOCKING TECHNOLOGY

©2018 Engineered Floors LLC - This unique design is protected under the U.S. Copyright Act of 1976. Any unauthorized copying or duplication of this design constitutes copyright infringement in violation of federal law.

Due to the unique visual characteristics of modular carpets, pattern repeats and pattern run-off seams may appear more noticeable than in broadloom carpets. Such visual characteristics do not constitute a manufacturing defect, and as such, should be considered when selecting modular carpet and its installation. These photographs are representations of the installation for this modular product. Your modular installation may look different than these photos depending upon individual tile placement, lighting and overall space layout, including furnishings. Final tile placement and the resulting visual is thus the customer's, and not EF Contract's, responsibility.

To learn more, visit:

EFCONTRACTFLOORING.COM

STYLE	LINE TLNE	LINE ACCENT TLNA
CONSTRUCTION	TIP-SHEARED SCROLL	TIP-SHEARED SCROLL
FIBER TYPE	ENCORE® SD NYLON	ENCORE® SD NYLON
DYE METHOD	SOLUTION DYED	SOLUTION DYED
OUNCE WEIGHT	22 OZ	22 OZ
GAUGE	1/12 IN	1/12 IN
BACKING	NEXUS® MODULAR	NEXUS® MODULAR
SIZE	12" W X 48" L	12" W X 48" L
PATTERN REPEAT	N/A	N/A
FINISHED PILE THICKNESS	.132 INCHES	.132 INCHES
SPECIAL TECHNOLOGY	PROTEX® SOIL RELEASE	PROTEX® SOIL RELEASE
OPTIONAL SPECIAL TECHNOLOGIES	PROSEPT® ANTIMICROBIAL SENTIR® ADVANCED ODOR BLOCKING TREATMENT	PROSEPT® ANTIMICROBIAL SENTIR® ADVANCED ODOR BLOCKING TREATMENT
PHYSICAL TESTING	FLOORING RADIANT PANEL – (CLASS 1) PILL TEST – (PASSES) SMOKE DENSITY – (LESS THAN 450 FLAMING) STATIC GENERATION – (LESS THAN 3.5 KV)	FLOORING RADIANT PANEL – (CLASS 1) PILL TEST – (PASSES) SMOKE DENSITY – (LESS THAN 450 FLAMING) STATIC GENERATION – (LESS THAN 3.5 KV)
WARRANTIES	LIFETIME FIBER PERFORMANCE FOR WEAR LIFETIME FIBER PERFORMANCE FOR STATIC LIFETIME STAIN REMOVAL LIFETIME COLORFASTNESS TO LIGHT AND ATMOSPHERIC CONTAMINANTS LIFETIME FOR TUFT BIND STRENGTH (EDGE RAVEL, YARN PULLS, ZIPPERING) LIFETIME AGAINST DELAMINATION LIFETIME DIMENSIONAL STABILITY	LIFETIME FIBER PERFORMANCE FOR WEAR LIFETIME FIBER PERFORMANCE FOR STATIC LIFETIME STAIN REMOVAL LIFETIME COLORFASTNESS TO LIGHT AND ATMOSPHERIC CONTAMINANTS LIFETIME FOR TUFT BIND STRENGTH (EDGE RAVEL, YARN PULLS, ZIPPERING) LIFETIME AGAINST DELAMINATION LIFETIME DIMENSIONAL STABILITY

RECOMMENDED INSTALLATION METHODS





1502 Coronet Drive
Dalton, Georgia 30720
U.S.A.

800.451.1250
efcontractflooring.com