

# Spree

Kinetex



## **We're EF Contract.**

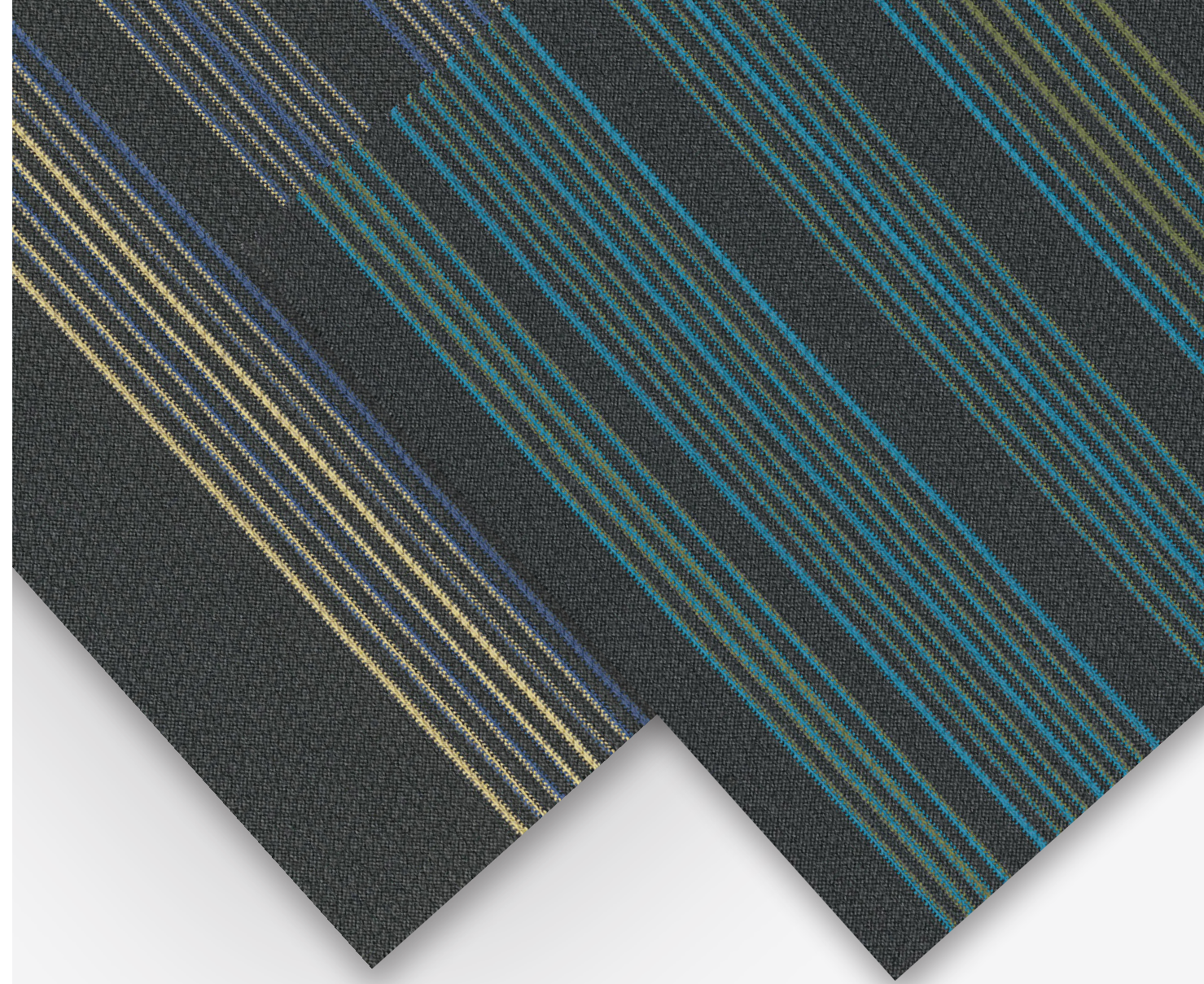
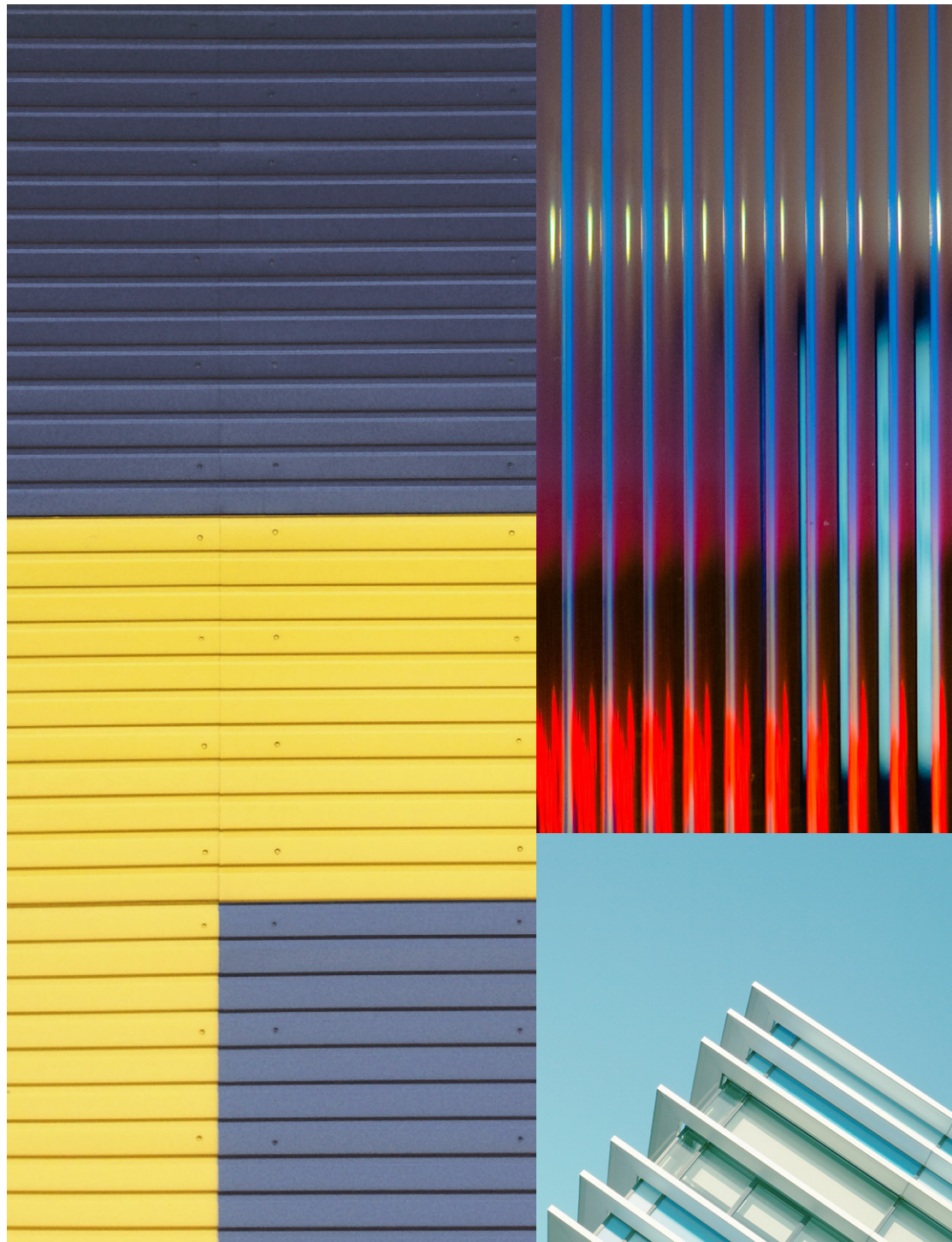
Part of the fastest-growing, most progressive family of flooring companies, we stand for confidence in quality, relentless service and doing right by all.

Our products are inspired by you: offering the carpet and hard-surface flooring that you want and need, that you've been seeking but unable to find, until now.

Every collection, pattern and colorway are created with best in class performance and in pursuit of design that is simply beautiful.

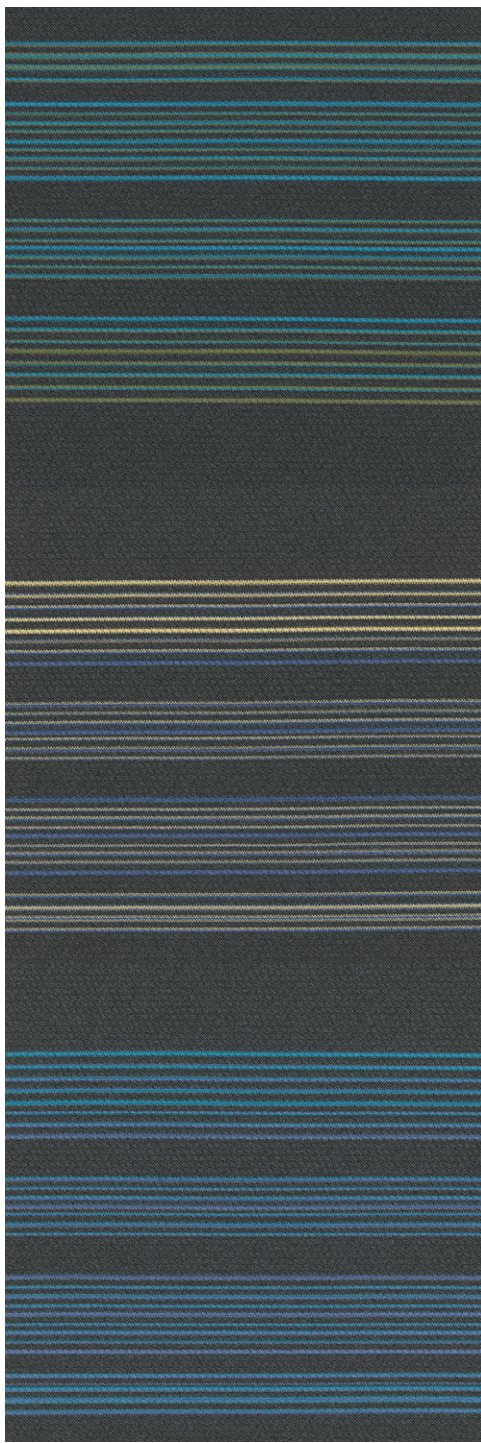
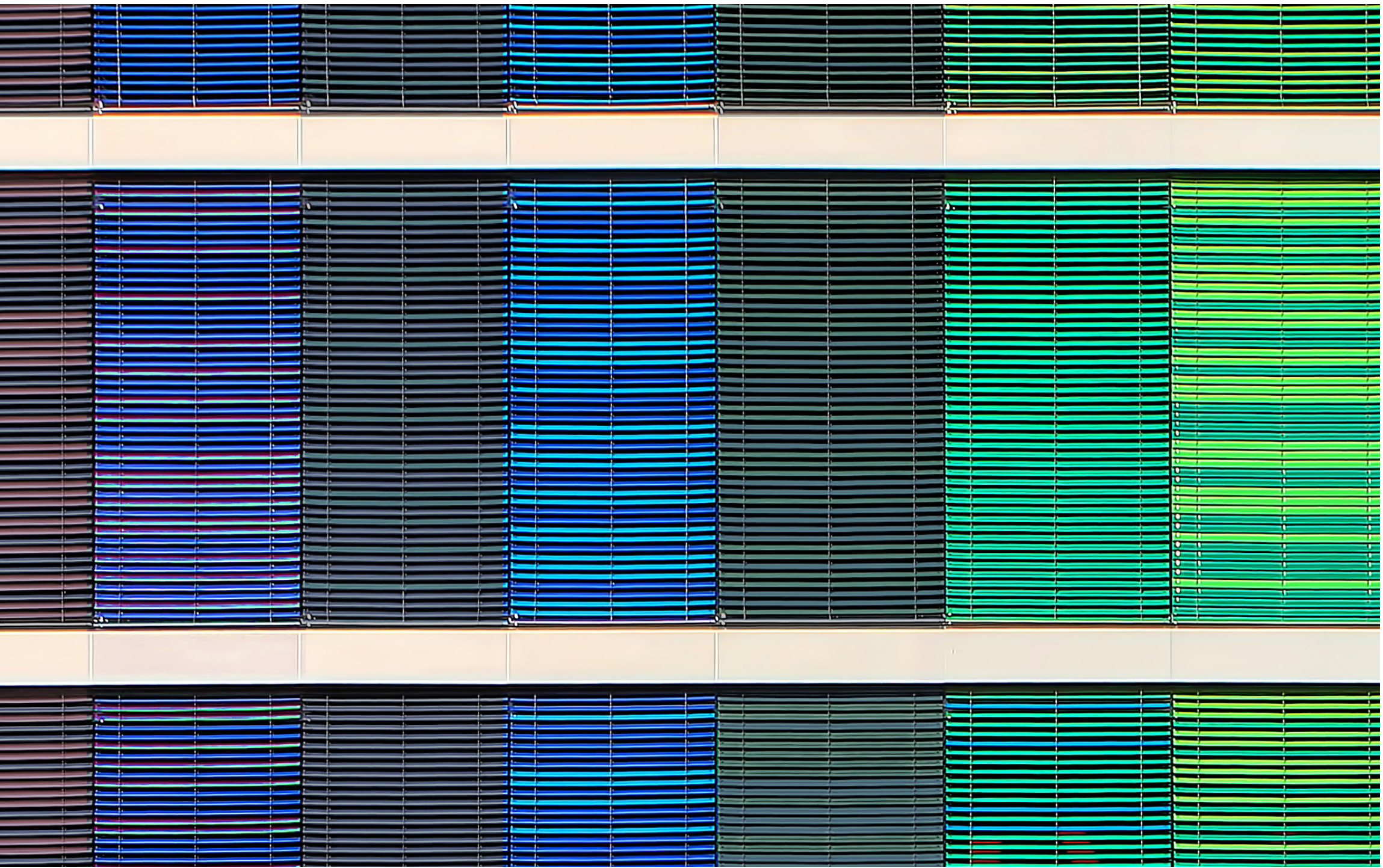
---

Kinetex® is a new breed of commercial floor: soft surface, but with the long-wearing performance and easy cleanability of a hard surface. Beautiful and functional, with a smaller environmental footprint than most flooring; perfect for retail, healthcare, education and corporate locations — now with the patterns and colorways you want for commercial environments.



## Spree

What happens when modern design meets a new, truly innovative kind of flooring? Behold: a classic stripe pattern, reborn as Kinetex.





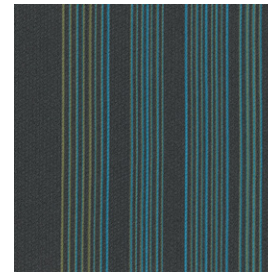


SPREE - SHINDIG

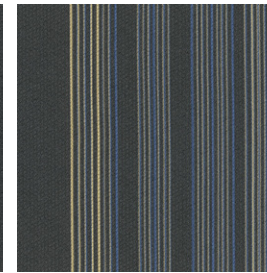




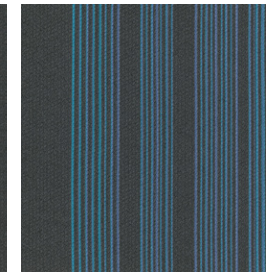
SPREE



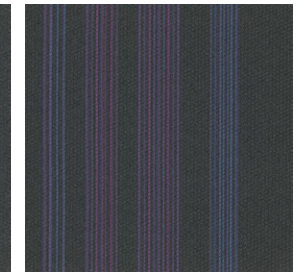
SPREE | SPR34  
FLING



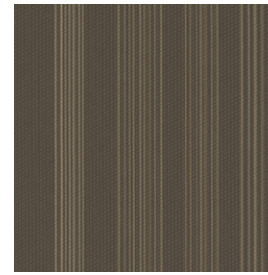
SPREE | SPR25  
SHINDIG



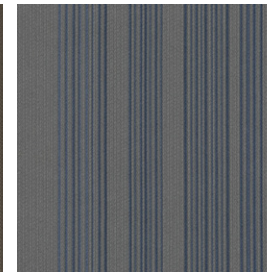
SPREE | SPR44  
GALA



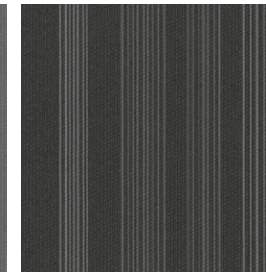
SPREE | SPR99  
PARTY



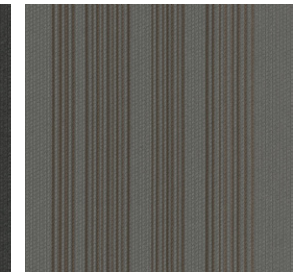
SPREE | SPR27  
HEYDAY



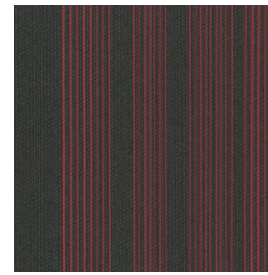
SPREE | SPR45  
LARK



SPREE | SPR59  
BLAST



SPREE | SPR77  
BASH



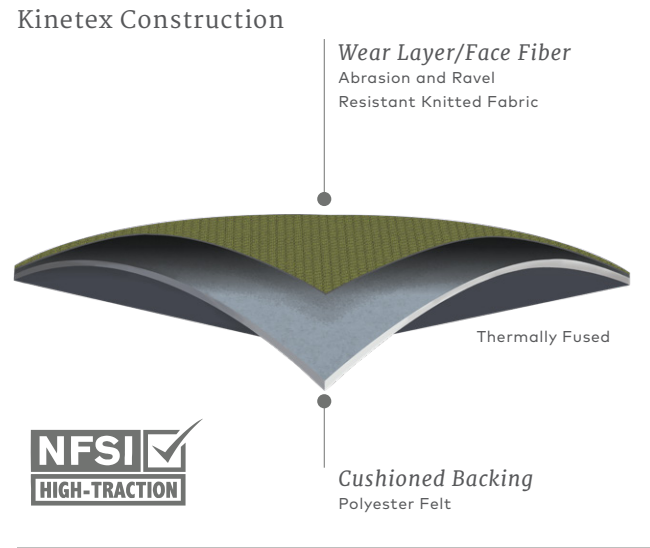
SPREE | SPR89  
REVEL

Style	SPREE   KSPR
Wear Layer	SOLUTION DYED POLYESTER
Backing	POLYESTER FELT CUSHION
Total Weight (Nominal Average)	4.5 OZ - 5.2 OZ / SQUARE FOOT
Total Thickness (Nominal Average)	0.205 INCHES
Dimensions	24 X 24 INCH MODULES

## KINETEX® OVERVIEW

Kinetex® is an advanced textile composite flooring that combines key attributes of soft-surface floor covering with the long-wearing performance characteristics of hard-surface flooring. Created as a unique floor covering alternative to hard-surface products, EF Contract's Kinetex encompasses an unprecedented range of performance attributes for retail, healthcare, education and institutional environments. In addition to its human-centered qualities and highly functional design, Kinetex offers a reduced environmental footprint compared to traditional hard-surface options.

The key to the high-performance attributes of Kinetex lies within its construction. Each layer, when used together, creates versatile, lightweight, soft-surface flooring designed with qualities parallel to that of hard-surface.



## PERFORMANCE BY THE MULTITUDES

A growing body of research correlates certain aspects of the built environment, such as acoustics, indoor air quality, glare and ergonomics, with measurable outcomes related to productivity, health, safety and effectiveness. Flooring can play a pivotal role in achieving positive outcomes when positioning these factors in many institutional environments. Combined with the practiced approach of evidence-based design, Kinetex provides a solid foundation for performance-driven settings.



### 1 | Durability

With outstanding dimensional stability and crush resistance, Kinetex has withstood over 5 million foot traffic events with minimal wear at a popular Florida-based entertainment venue. That equates to more than the total number of people who have attended every Super Bowl since the first game, over 50 years ago.



### 2 | Maintenance

Kinetex cleans easily with vacuuming, encapsulation cleaning or hot water extraction (in areas prone to heavy soiling). It retains less water than carpet and therefore dries quickly. Kinetex is bleach resistant and resists the most challenging staining agents, such as blood, urine, Betadine and hand sanitizers. The maintenance of Kinetex is simple and more cost efficient compared to that of hard-surface flooring. There is no need for stripping, wear layer application or buffing — saving time and materials.



### 3 | Health

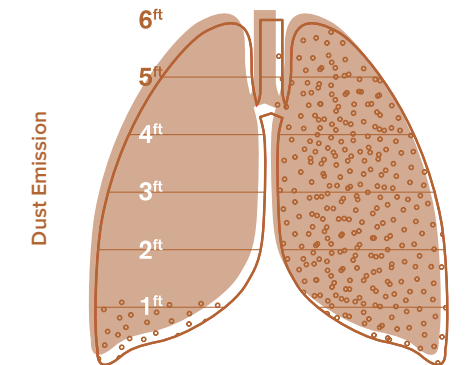
Kinetex easily surpasses California's 01350 requirements for low-VOC emissions and substantially minimizes airborne particles by sequestering common allergens, irritants and dust. In addition, Kinetex is easily sanitized and has a very short drying time when cleaned.

Airborne Allergens and Irritants Foot Traffic Dust Emissions Test (ISO Fine Test Dust 12103-1, A2)

SOURCE: CONDUCTED BY AN INDEPENDENT TESTING LABORATORY

## AIRBORNE ALLERGENS & IRRITANTS

Breathing Zone Analysis



VS.

KINETEX

HARD SURFACE

## WHERE TO USE KINETEX®

### Healthcare

Acute care hospitals, medical office buildings, urgent care clinics, outpatient surgery centers, outpatient physical therapy / rehab centers, outpatient imaging centers, etc.

- Cafeteria, dining areas
- Chapel
- Computer room
- Corridors
- Diagnostic imaging suites
- Dry physical therapy
- Elevators
- Exam / procedure rooms
- Gift shops
- Hyperbaric treatment rooms
- Lobbies
- Nursing stations
- Offices / administration / conference rooms
- Patient rooms
- Pharmacy
- Ramps / ramped corridors
- Staff lounge
- Waiting rooms

### Education

Early childhood development centers, pre-school, k-12, higher education

- Auditoriums
- Classrooms / lecture halls
- Computer classrooms
- Dormitory rooms

### Food service areas

- Multipurpose rooms / cafeteria
- Ramps / ramped corridors
- Faculty / administrative offices
- Faculty lounge
- Libraries

### Commercial Offices

- Offices, call centers
- Offices
- Waiting areas
- Corridors
- Conference rooms
- Copy / mail rooms
- Break rooms
- Computer rooms

### Fitness Centers

- Health Clubs / Gyms
- Cardio centers
- Stationary weight centers
- Dry locker room areas
- Snack bars
- Offices

### Retail / Mercantile

- Wholesale / Retail merchants
- Checkout / cash wrap
- Dressing rooms
- Sales floor
- Offices
- Employee break areas

### Hospitality

#### Hotels

- Corridors
- Conference rooms
- Guest rooms
- Dining rooms
- Business centers
- Activity rooms
- Common areas
- Computer rooms

#### Transportation / Public Venues

- Airports, bus / train stations, performing arts centers, athletic arenas
- Ticketing / baggage claim
- Concourses
- Jetways
- Conference rooms
- Waiting areas
- Administrative offices / ATC
- Airline clubs / USO
- Chapel
- Large public spaces
- Theaters





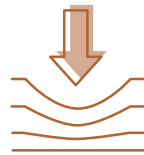
## 4 | Safety

Kinetex's unique construction creates one of the most slip-resistant flooring surfaces ever tested, wet or dry — reducing the potential for slip and fall injuries. It has been certified by the National Floor Safety Institute (NFSI) as a high-traction surface. Its unique low profile also has minimal rolling resistance, potentially reducing injuries from pushing and pulling.



## 5 | Acoustics

Kinetex offers one of the highest Noise Reduction Coefficients (.30) and Impact Insulation Classifications (64) of any commercial flooring product. This unparalleled acoustic performance results in dramatic reductions in both airborne and structure-borne noise. Its excellent Impact Insulation Classification effectively promotes greater voice recognition, fewer mistakes, less vocal strain, enhanced learning and improved occupant perception.



## 6 | Comfort

Kinetex's high-density backing and soft textile surface provides exceptional anti-fatigue properties along with minimal rolling resistance. It embodies the potential to absorb energy and reduce both repetitive foot stress injuries as well as injuries related to walking and moving frequently from place to place.



## 7 | Sustainability

Due to its lower mass, Kinetex has a 50% lower environmental impact compared to other commercial floorings. With more than 55% recycled content, Kinetex is NSF/ANSI-140 Platinum certified. In addition, Kinetex is easily recycled into the next generation of itself, as easily as an aluminum can.

## Kinetex® Installation

Installing Kinetex is as easy as traditional modular carpet, however special attention should be applied until installers gain experience with module placement. Installers should perform site and material conditioning, surface preparation and concrete pH and moisture testing as if they were installing EF Contract carpet modules. Because it is such a lightweight material the modules cut very easily, reducing installation time. Kinetex uses EF Contract's proven adhesive systems with lifetime performance warranties.

## PreFix®

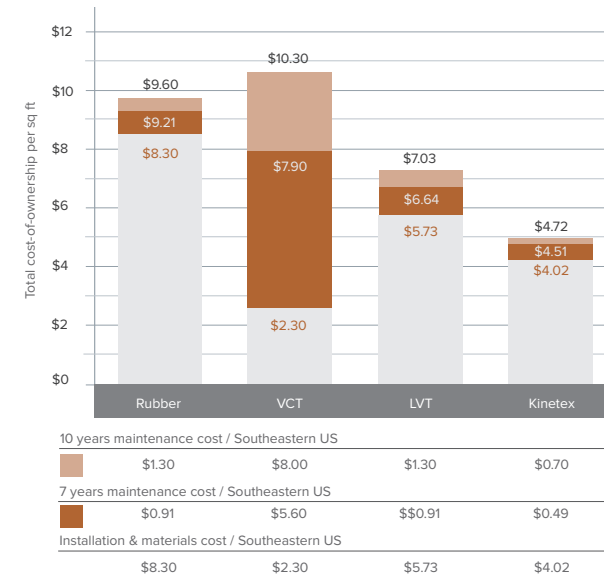
All applied pattern Kinetex products feature PreFix Pre-Applied Releasable Adhesive. PreFix includes a release liner that easily peels away to reveal a series of pre-applied adhesive steps that securely anchor the Kinetex module in place. Products with PreFix will perform in elevated RH slabs up to 100%, allowing the flooring to be installed without costly moisture mitigation. PreFix offers a quick installation system, and while standard on applied pattern products, it can be added to non-applied pattern Kinetex products as an optional adhesive.

## Kinetex® Adhesive

Non-applied pattern Kinetex products feature the proven releasable spread system, Kinetex Adhesive. This adhesive is formulated for Kinetex textile composite flooring products and is built to bond the textile composite to the properly prepared substrates for the life of the installation. Products with Kinetex Adhesive will perform in elevated RH slabs up to 95%.

Both PreFix and Kinetex Adhesive offer the flexibility to simply remove and replace individual modules if conditions warrant a quick fix.

*Please see the Kinetex installation instructions for full installation details.*



The costs shown reflect average SE United States costs, which may vary depending upon the cost of materials, the cost of installation and the cost of maintenance. The relative costs will remain approximately the same for most geographic locations.

## Life Cycle Cost Comparison | The True Cost of Ownership

Kinetex has a significant cost advantage over hard-surface floors, a critical factor at a time when administrators, managers and others are operating their facilities on greatly reduced budgets. The life cycle cost of ownership — defined as the cost of flooring materials, installation and maintenance over a seven to 10-year period — for Kinetex is approximately 51% less than rubber flooring, 33% less than LVT flooring and 55% less than VCT flooring. This offers substantial savings over the life span of the flooring installation.

## High-Tolerance Solution for Moisture Transmission in Concrete

If high-moisture emission is discovered during concrete moisture testing, then proper precautions should be taken to prevent flooring system failures.

Kinetex textile composite flooring will perform in elevated RH slabs up to 100% when using PreFix Pre-Applied Releaseble Adhesive. The breathable nature of this product allows moisture to pass through the backing rather than trap it underneath. This method of vapor transmission allows Kinetex to be installed without costly moisture mitigation.

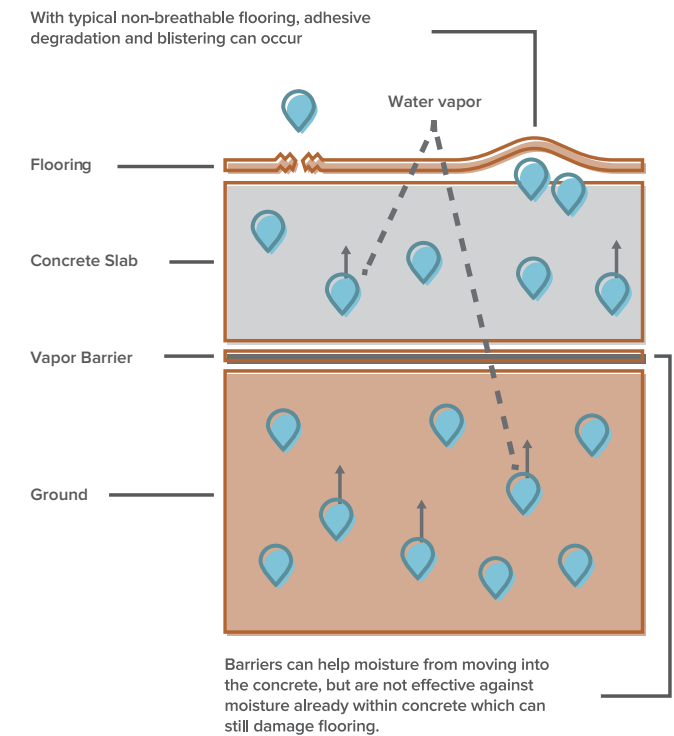
## Kinetex® Maintenance

Kinetex is tough to wear out but easily cleaned. Regular vacuuming combined with interim low-moisture encapsulation cleaning or hot water extraction in areas prone to heavy soiling is all that's needed to keep Kinetex looking new. Because its lightweight face construction retains less water, Kinetex dries 75% faster than carpet, rendering it suitable for cleaning while occupied. While wet, it has a highly reduced slip-coefficient when compared to a wet hard surface — which offers a much safer area for walking and standing.

This low-maintenance product also resists the most challenging staining agents, such as blood, urine, Betadine and hand sanitizer. Many Kinetex products feature a wear layer which is bleach resistant, allowing sanitizing and spot cleaning to be easily performed without affecting color. <sup>1</sup>

<sup>1</sup> When using the recommended 10% bleach/water solution. Kinetex applied pattern products require a bleach alternative such as Vital Oxide.

*Please see the Kinetex maintenance instructions for full recommendations concerning schedules and cleaning supplies for preventative, daily and interim maintenance.*



## PRODUCT DETAILS

### Adhesives

#### PREFIX™ PRE-APPLIED RELEASABLE ADHESIVE

PreFix, a quick installation for all Kinetex textile composite flooring products. The release liner easily peels away to reveal a series of pre-applied adhesive strips that securely anchor the Kinetex module in place.

### Optional Technologies

#### SENTIR® ADVANCED ODOR-BLOCKING TECHNOLOGY

EF Contract's Sentir is a self-renewing treatment designed for the control or elimination of offensive odors associated with various indoor environments, and it is especially beneficial with odor-bearing spills.

Sentir is not a deodorant that masks offensive odors. It is a technology that absorbs and fragments the odor into component parts over a period of time, thus destroying the odor itself.

Sentir is not decomposed by this action and is therefore ready to destroy the next odor molecule it encounters. The binding properties of Sentir provide resistance to multiple cleanings and trafficking, ensuring durability.

### Warranties

We stand behind every aspect of Kinetex and extend certain lifetime warranties. Each warranty is covered for the useful life of the product, provided that installation and maintenance is in accordance with EF Contract's Kinetex Installation Instructions.

#### WEAR LAYER WARRANTIES

- Lifetime Product Performance
- Lifetime Colorfastness to Light & Crocking
- Lifetime Stain Removal
- Lifetime Static Protection

#### BACKING WARRANTIES

- Lifetime Protection from Edge Ravel
- Lifetime Protection from Delamination Failure
- Lifetime Dimensional Stability

### Accolades

Kinetex is one of the most extensively tested flooring products to ever be introduced. In addition to its unprecedented range of performance attributes, the human-centered qualities and highly functional design have quickly garnered attention. Below is a list of current awards and recognitions that Kinetex has received.

- 2015 Nightingale Award  
Gold, Hard Surface (Umbra / Umbra Stripe)
- 2015 Best of NeoCon, Hard Surface – Silver Award  
(Umbra / Umbra Stripe)  
(Contract Magazine)
- 2014 Top Ten Green Building Product  
(BuildingGreen, Inc.)
- 2014 Greenstep Award  
(Floorcovering Weekly)
- 2014 Grand Prize Winner for Product Innovations  
(Buildings Magazine)
- 2014 Excellence in Product Development  
(British Institute of Facilities Management)

STYLE	SPREE   KSPR
WEAR LAYER	SOLUTION DYED POLYESTER
BACKING	POLYESTER FELT CUSHION
TOTAL WEIGHT (NOMINAL AVERAGE)	4.5 OZ – 5.2 OZ / SQUARE FEET
TOTAL THICKNESS (NOMINAL AVERAGE)	0.205 INCHES
DIMENSIONS	24 X 24 INCH MODULES
PACKAGING	18 MODULES PER BOX, 72 SQUARE FEET
RECYCLABILITY	100% CLOSED-LOOP RECYCLABLE
RECYCLED CONTENT	>55% (POST CONSUMER/INDUSTRIAL)
LEED SCORECARD	IEQ 4.1 AND IEQ 4.3
NSF/ANSI 140 CERTIFICATION	PLATINUM
FLOORING RADIANT PANEL	CLASS 1
SMOKE DENSITY	LESS THAN 450 (FLAMING & NON-FLAMING)
ELECTROSTATIC PROPENSITY	LESS THAN 3.0 KV
COLORFASTNESS TO LIGHT	RATING OF 4.0 OR GREATER
COLORFASTNESS TO CROCKING	RATING OF 4.0 OR GREATER
WATER REPELLENCY	RATING OF 4.0 OR GREATER
APPEARANCE RETENTION	4.5 OR GREATER
SLIP RESISTANCE	COMPLIES WITH ADA GUIDELINES FOR LEVEL SURFACE
THERMAL INSULATION	R-4
NOISE REDUCTION COEFFICIENT	NRC RATING: 0.30*
IMPACT INSULATION CLASSIFICATION	IIC RATING: 64**
STAIN RESISTANCE	RESISTS MOST CHALLENGING STAINS
BLEACH RESISTANCE	RATING OF 4.0 OR GREATER (5% CLORINE BLEACH /95% WATER)
ADHESIVES	INDOOR AIR QUALITY CERTIFICATION

#### RECOMMENDED INSTALLATION METHODS



©2018 Engineered Floors LLC - This unique design is protected under the U.S. Copyright Act of 1976. Any unauthorized copying or duplication of this design constitutes copyright infringement in violation of federal law.

Due to the unique visual characteristics of modular carpets, pattern repeats and pattern run-off seams may appear more noticeable than in broadloom carpets. Such visual characteristics do not constitute a manufacturing defect, and as such, should be considered when selecting modular carpet and its installation. These photographs are representations of the installation for this modular product. Your modular installation may look different than these photos depending upon individual tile placement, lighting and overall space layout, including furnishings. Final tile placement and the resulting visual is thus the customer's, and not EF Contract's, responsibility.



To learn more, visit:  
EFCONTRACTFLOORING.COM



1502 Coronet Drive  
Dalton, Georgia 30720  
U.S.A.

800.451.1250  
[efcontractflooring.com](http://efcontractflooring.com)